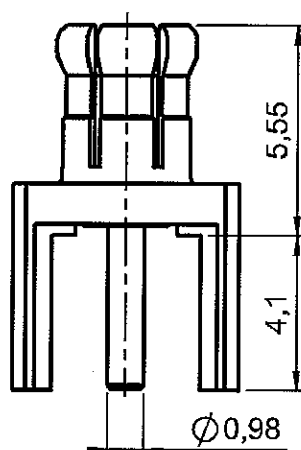
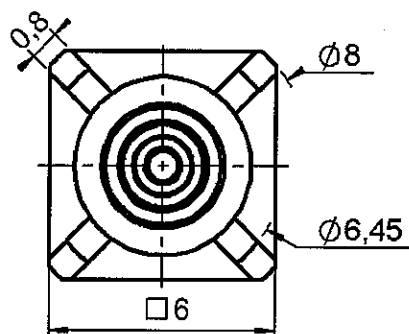


## STRAIGHT MALE RECEPTACLE FOR PCB

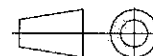
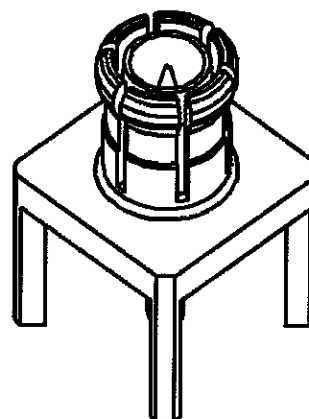
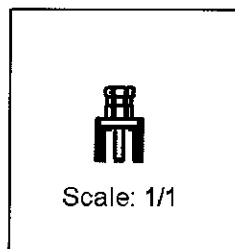
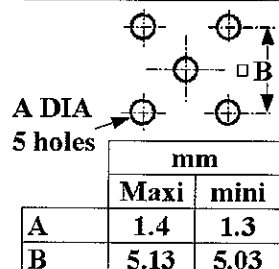
**R113.425.000**

## SOLDER LEGS

Series : MCX



## PANEL CUT OUT



All dimensions are in mm.

COMPONENTS	MATERIALS	PLATING (µm)
BODY	BERYLLIUM COPPER	GOLD 0.2 OVER NICKEL 2
CENTER CONTACT	BRASS	GOLD 1.3 OVER NICKEL 2
OUTER CONTACT	-	-
INSULATOR	PTFE	-
GASKET	-	-
OTHERS PARTS	-	-
-	-	-
-	-	-

Issue : 0545 C

In the effort to improve our products, we reserve the right to make changes judged to be necessary.

**RADIALL®**

## STRAIGHT MALE RECEPTACLE FOR PCB

**R113.425.000**

## SOLDER LEGS

Series : MCX

**PACKAGING**

Standard	Unit	Other
100	'W' option	Contact us

**SPECIFICATION****ELECTRICAL CHARACTERISTICS**

Impedance	50	$\Omega$
Frequency	0-6	GHz
VSWR	1.05 + 0.050	x F(GHz) Maxi
Insertion loss	0.03*	$\sqrt{F}$ (GHz) dB Maxi
RF leakage	-( NA	- F(GHz)) dB Maxi
Voltage rating	335	Veff Maxi
Dielectric withstanding voltage	1000	Veff mini
Insulation resistance	1000	M $\Omega$ mini

**CABLE ASSEMBLY**

Stripping	a	b	c	d	e	f
mm	0.00	0.00	0.00	0.00	0.00	0.00

Assembly instruction : NA

Recommended cable(s)

Characteristics indicated on this data sheet are those that can be achieved with the highest performance cable. Intrinsic limitations of the cable may diminish the performance of the assembly

Cable retention

- pull off	NA	N mini
- torque	NA	N.cm

**MECHANICAL CHARACTERISTICS**

Center contact retention	
Axial force – Mating end	10 N mini
Axial force – Opposite end	10 N mini
Torque	NA N.cm mini

**TOOLING**

Part Number	Description	Hexagon
.	.	.

Recommended torque	
Mating	NA N.cm
Panel nut	NA N.cm
Clamp nut	NA N.cm
A/F clamp nut	0.000 mm

Mating life	500 Cycles mini
Weight	0.000 g

**ENVIRONMENTAL**

Operating temperature	-55/+155 °C
Hermetic seal	NA Atm.cm3/s
Panel leakage	NA

**OTHER CHARACTERISTICS**

\* Coaxial Transmission Line Only

Issue : 0545 C

In the effort to improve our products, we reserve the right to make changes judged to be necessary.



# Mouser Electronics

Authorized Distributor

Click to View Pricing, Inventory, Delivery & Lifecycle Information:

Radial:

[R113425000](#)