

**LC DUPLEX PC MULTIMODE ADAPTOR  
 ZIRCONIA ALIGNMENT SLEEVE**

 Packaging  
 100

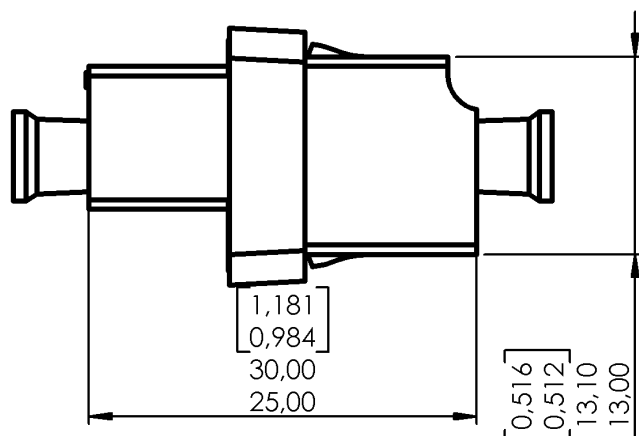
 Series  
 LC

 Issue  
 12/04/03

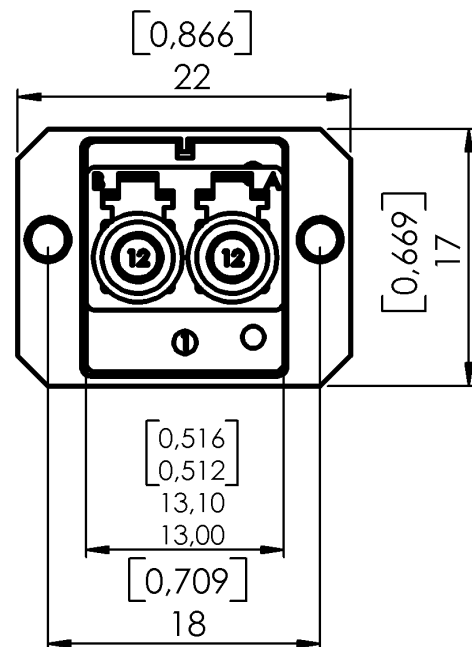
 Page  
 1 / 2

Adaptor : color BEIGE

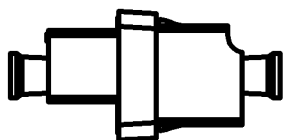
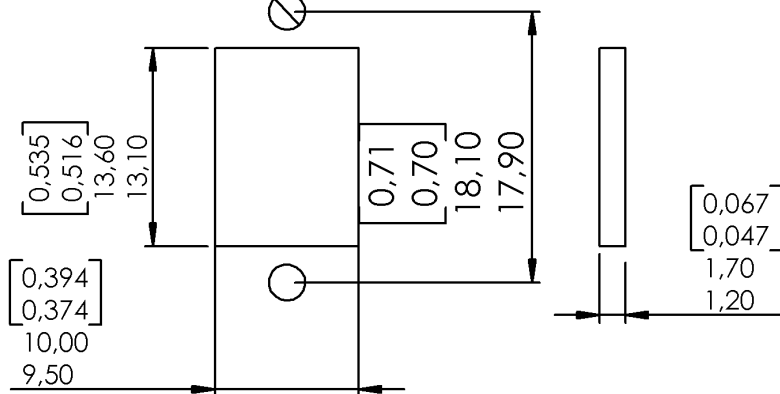
Duplex



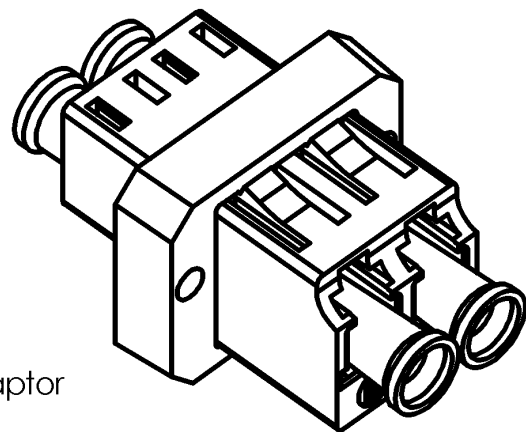
PANEL PIERCING




Ø 2,40 or M2



Scale : 1/1

 Contents :  
 - Low profile duplex adaptor  
 - Receptacle dust cap  
 - Sleeve


Original dimensions in mm [inch]

 <b>RADIAL</b> <small>Optical Fiber Components</small>	<b>TECHNICAL DATA SHEET</b>	<b>F727.751.700</b>			
LC DUPLEX PC MULTIMODE ADAPTOR ZIRCONIA ALIGNMENT SLEEVE		Packaging 100	Series LC	Issue 12/04/03	Page 2 / 2
Adaptor : color BEIGE		Duplex			
<div>GENERAL</div> <div><div><input type="checkbox"/> TYPE</div><div>IEC 61754-20 (LC ) Receptacle color : BEIGE</div></div> <div><div><input type="checkbox"/> MOUNTING</div><div>SC panel cut-out screw in Max. panel thickness 1.7 mm</div></div> <div><div><input type="checkbox"/> ALIGNMENT SLEEVE</div><div>Zirconia</div></div>					
<div>CHARACTERISTICS (Depending on fibre or cable construction)</div> <div><div><div><input type="checkbox"/> MATERIAL</div><div>Plastic moulded : Material in accordance with TELCORDIA GR-326 CORE flammability V0 (UL 94)</div></div><div><div><input type="checkbox"/> MECHANICAL</div><div>Durability20068 cycles</div></div><div><div><input type="checkbox"/> ENVIRONMENTAL</div><div>Storage temperature range-40 °C to +85 °C Operating temperature range-40 °C to +70 °C</div></div><div><div><input type="checkbox"/> PROOF TEST</div><div>Straight pull68 N Side pull23 N</div></div><div><div><input type="checkbox"/> VIBRATION TEST</div><div>10 to 55 Hz, 1,5 mm (peak to peak), 2 Hr/axis</div></div></div>					
<div>(Performance and specification : see document GEN - F727 001)</div>					

# Mouser Electronics

Authorized Distributor

Click to View Pricing, Inventory, Delivery & Lifecycle Information:

Radial:

[F727751700](#)