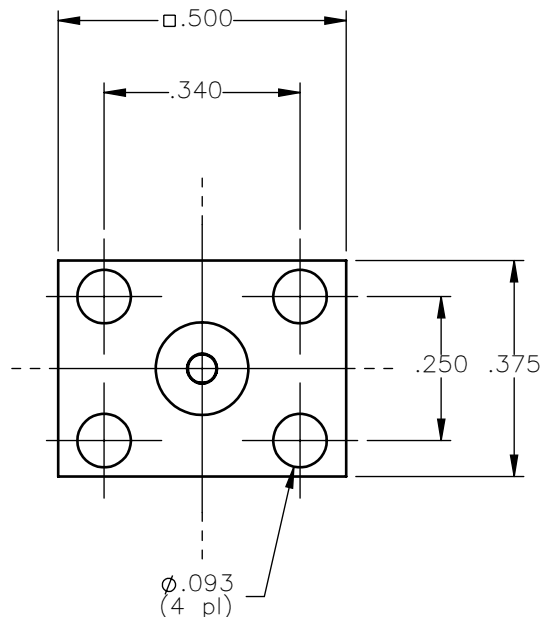
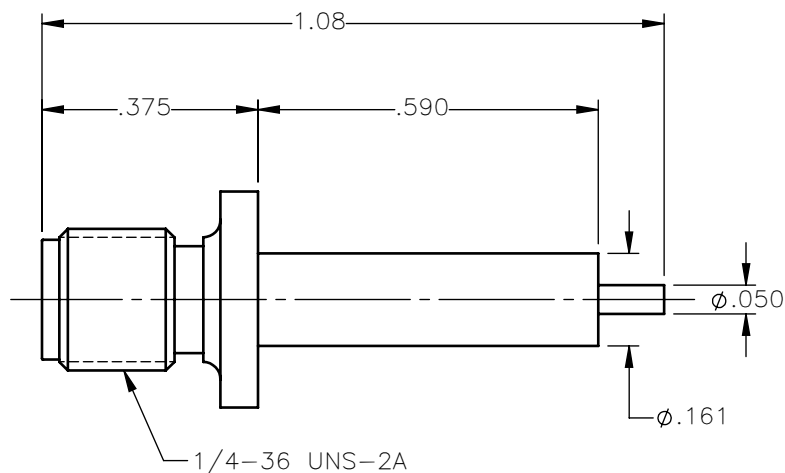


| REVISIONS | | | |
|-----------|-----------------|----------|----------|
| REV. | DESCRIPTION | DATE | APPROVED |
| A | INITIAL RELEASE | 03/12/18 | C.E. |





NOTES:

MATERIALS:

1. BODY = STAINLESS STEEL PER ASTM A582, ALLOY 303, CONDITION "A".
2. INSULATOR = VIRGIN WHITE TEFLON PER ASTM D1710, GRADE 1, TYPE I, CLASS "B".
3. CONTACT = BERYLLIUM COPPER PER ASTM B196, ALLOY C17300, TEMPER TD04.

FINISHES:

1. BODY = PASSIVATE PER SAE-AMS-2700
2. CONTACT = GOLD PLATE PER ASTM B488-11, TYPE II, 50 μ in MIN, GRADE C, OVER 100 TO 200 μ in STRESS FREE SULFAMATE NICKEL PER AMS-QQ-N-290.

| | | | | | |
|---|-------|-----------------------|------------------|--|---|
| UNLESS OTHERWISE SPECIFIED DIMENSIONS ARE IN INCHES TOLERANCES ON | | DWN: C.E. | DATE 03/12/18 |  Property of Radiall This document cannot be reproduced or communicated to a third party without prior written permission of RADIALL. |  |
| | | CHKD: D.N. | DATE 03/12/18 | | |
| DECIMAL | ANGLE | APVD: J.M. | DATE 03/12/18 | SMA STRAIGHT JACK PANEL MOUNT RECEPTACLE | |
| REFERENCE: | | MATERIALS & FINISHES: | | | |
| ORIGINATED: C.E. DATE: 03/12/18 | | SEE NOTES | | SIZE A | FSCM NO. 19505 |
| | | | | DWG NO. 9007-9113-000 | REV A |
| | | SCALE 3:1 | | THIRD ANGLE PROJECTION | SHEET 1 OF 1 |

9007-9113-000

Mouser Electronics

Authorized Distributor

Click to View Pricing, Inventory, Delivery & Lifecycle Information:

Radial:

[9007-9113-000](#)