

Blackhawk Scribe™ *Blackhawk*

by EWA Technologies, Inc.

I²C and SMBus Monitor, Debugger, and Programmer

Powering Bus Analysis Solutions



In the world of rapidly accelerating product development cycles, engineers developing products which utilize the I²C and SMBus interfaces need a bus analyzer that is easy to use—fast and simple.

Unforeseen problems such as functional bugs can cause schedules to slip so it is important to have the right tool to resolve them quickly by isolating the root cause.

The Blackhawk Scribe™ analyzer is designed with that idea in mind—the right tool at the right price. Open the box and plug it in; *everything just works.*

Features

- Supports I²C and SMBus.
- Supports Standard-mode, Fast-mode, and Fast-mode Plus (Fm+) with I²C bus data rates up to 5 Mbit/s.
- Supports High-speed mode (Hs-mode) monitoring up to 5 Mbit/s.
- Passive traffic monitoring with unlimited state and timing recording.
- Time stamping, message filtering, and symbolic translating.
- Programmable trigger event to highlight bus transactions of interest.
- Automatic detection of bus voltage and signal thresholds.
- Two general purpose I/O channels.
- Programmable bus voltage reference and software configurable pull-up resistors on the SDA and SCL lines.
- In-System Programming of I²C serial EEPROMs.
- High-speed USB 2.0 interface.
- Robust and portable bus-powered USB device, no external power supply required.
- I2C Exerciser software supports Windows® XP, Windows Vista®, and Windows 7, and Windows 8 operating systems.

Applications

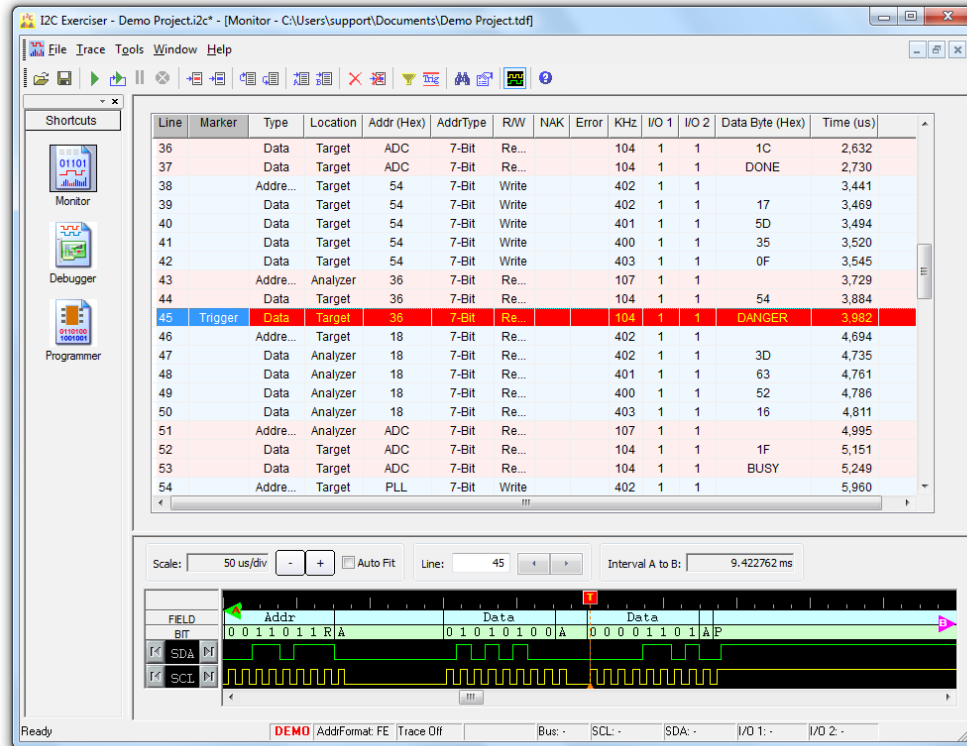
- **Software development** - Monitor and log I²C bus traffic in real-time.
- **Hardware debugging** - Generate traffic to exercise the bus and communicate with its peripheral components.
- **In-system programming** - Read, erase, program and verify I²C serial EEPROMs.

Benefits

- Monitor displays high-level view of I²C bus traffic. Bit and protocol level information is also available and graphically displayed as a timing waveform.
- Debugger allows direct read/write access to peek and poke device registers on the I²C bus. The Scribe acts as a master to generate I²C transactions while simultaneously monitoring the traffic on the bus.
- I2C Exerciser software is easy to learn and use. Graphical interface allows quick access to the powerful functionality and filters out the noise so that you may focus on the trace data that you actually need to see.
- Everything needed to get started is provided. No need to purchase additional "optional" modules or adapter cables to be compatible.

Learn More: For more information about Blackhawk products, please visit <http://www.blackhawk-dsp.com/>

The Blackhawk Scribe is an entry level, yet feature-packed and robust I²C debugging tool. The Blackhawk Scribe allows engineers to save precious development time by providing low level visibility and control of an I²C bus. There is no longer a need to hook up a logic analyzer to capture traffic on the bus and then spend hours sifting through mountains of data in order to find that one particular bit. The Blackhawk hardware and software provide a convenient and intuitive environment for hardware debugging, software development, and in-system programming.



I2C Exerciser Monitor Screen

Please see the *Blackhawk Scribe User's Manual* or the free downloadable software demonstration for more information and detailed technical specifications.

Hardware Specifications

General

Mechanical Dimensions 5.50 x 1.00 x 4.75 (+/- 0.10) inches

Certifications RoHS Compliant, CE Marked

USB Interface

USB Transfer Rate High-speed USB 2.0

USB Cable Ships with a 6 foot USB 2.0 A to B cable.

I²C Interface

I²C Bus Connector RJ45 (AMP P/N 406549-1)

I²C Bus Cable Ships with a 12 inch interface cable that terminates in flying leads suitable for connection to 0.025 inch square posts. Test clips are also included.

Ordering Information

Part Number—12207

For more information, or to order this product online, please visit our website at <http://www.blackhawk-dsp.com/Scribe>

System Requirements

- One available USB 2.0 Port.
- Windows® XP (SP2), Windows® Vista, Windows® 7, or Windows® 8.
- 3.2 GHz Pentium® 4 Processor (or equivalent).
- 1 GB of RAM.
- 600 MB of free Hard Disk Space (2 GB or more for continuous logging of trace data).

What's Included

- Blackhawk Scribe Hardware.
- 6' USB 2.0 Cable.
- 12" I²C Target Interface Cable consisting of flying leads with test clips.
- Installation Disc.

Blackhawk

123 Gaither Drive
Mt. Laurel, NJ 08054, USA
Phone: +1 877-983-4514
www.blackhawk-dsp.com

Additional Information

- [User's Manual](#)

Mouser Electronics

Authorized Distributor

Click to View Pricing, Inventory, Delivery & Lifecycle Information:

[Blackhawk:](#)

[BH-SCRIBE](#)