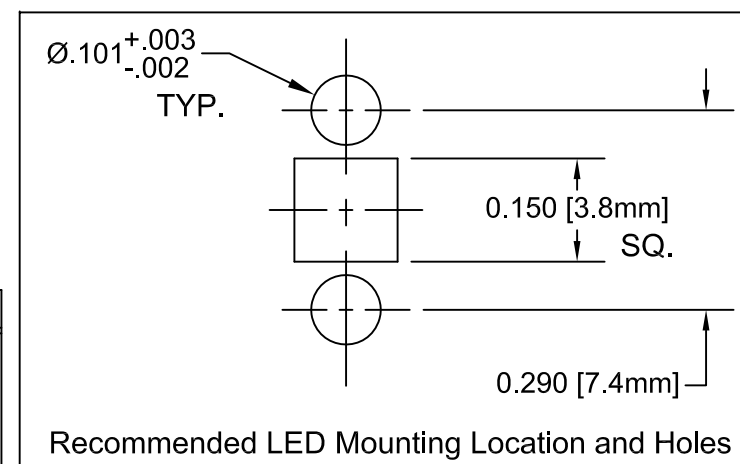
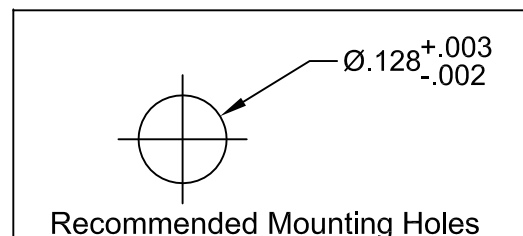
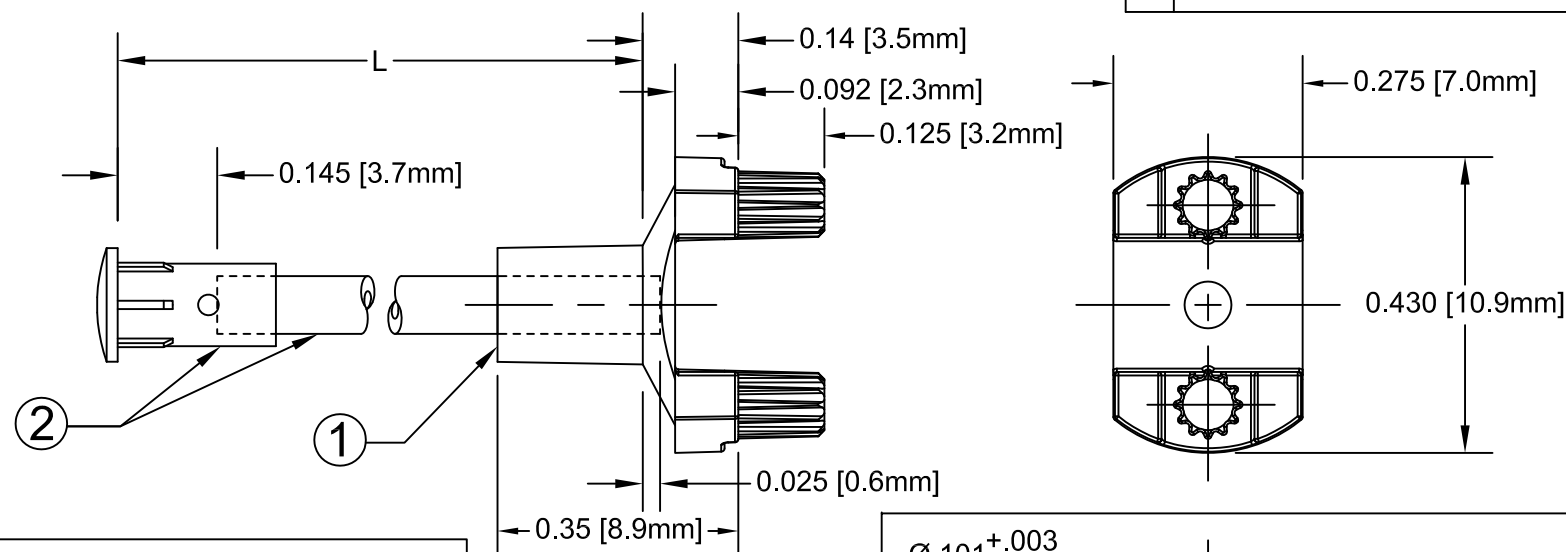


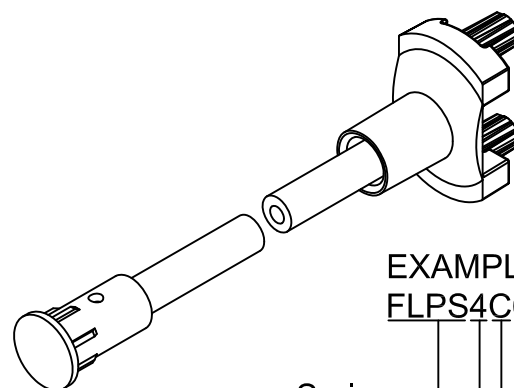
ITEM	Q'TY	PART NUMBER	PART DESCRIPTION
1	1	SMFLP	Adapter, Surface Mount Flexible Light Pipe
2	1	PM4-C1522-XX.XX	4mm Circular Lens FLP Indicator

REV.	DESCRIPTION	DATE	APPROVED
A	Engineering Release.	07/11/12	T. Y.
B	Updated Table For Length "L"	12/12/12	T. Y.



" L " *	Tolerance
1.0" ~ 16.0"	±0.050"
16.1" ~ 40.0"	±0.15"
40.1" ~ 80.0"	±0.30"
80.1" ~ 500.0"	±0.5%

* Available in 0.1" increments only



EXAMPLE:
FLPS4C6.5-E

Series
Lens Size
Lens Shape
Adaptor Style
Fiber Length in 0.1" Increments

NOTE: SMFLP ADAPTER SHIPPED NON-ASSEMBLED

STANDARD TOLERANCE (UNLESS OTHERWISE SPECIFIED)			
DECIMALS	ANGULAR		
.X ±.1	X° ± 1°	TITLE: 4mm Circular Lens Flexible Light Pipe FLPS1522 Indicator w/ SMFLP Adaptor PART NO: FLPS4CX.X-E CAGE CODE : 32559 SHEET # 1 OF 1	
.XX ±.02			
.XXX ±.010			
DESIGNED: Ty Yin	DATE: 07/11/12	REVISION: B	
CHECKED: B. Oliver	DATE: 07/11/12	CAD GENERATED DOCUMENT, DO NOT MEASURE DRAWING.	

Mouser Electronics

Authorized Distributor

Click to View Pricing, Inventory, Delivery & Lifecycle Information:

BIVAR:

[FLPS4C12.3-E](#) [FLPS4C18.0-E](#) [FLPS4C9.0-E](#)