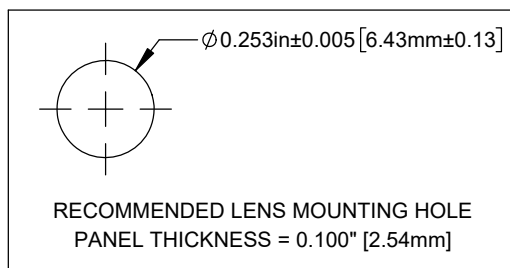
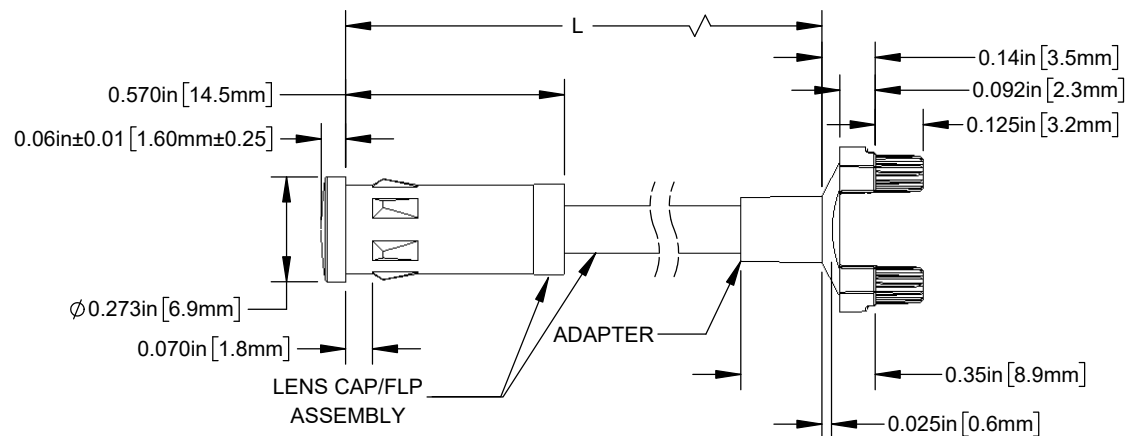


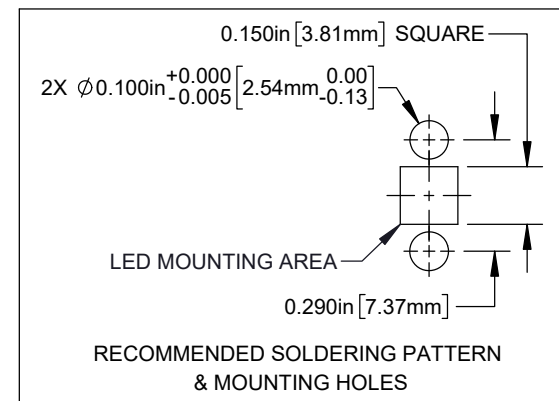
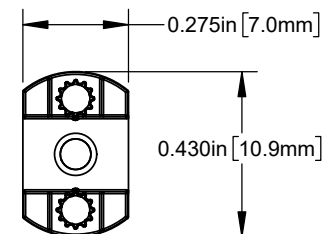
1. COMPONENTS SHIPPED NON-ASSEMBLED.




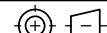
| TABLE 1 - LENGTH  |           |
|-------------------|-----------|
| LENGTH (L)*       | TOLERANCE |
| 1.00" - 16.00"    | ±0.05"    |
| 16.1" - 40.00"    | ±0.15"    |
| 40.1" - 80.00"    | ±0.30"    |
| 80.1" - 3,940.00" | ±0.5%     |

INSERT FLEXIBLE LIGHT PIPE INTO ADAPTER TO COMPLETE ASSEMBLY

| REVISIONS |  |            |          |
|-----------|--|------------|----------|
| REV.      | DESCRIPTION                                  | DATE       | APPROVAL |
| A         | Engineering Release                          | 9/14/2009  | T.Y.     |
| B         | Updated Table For Length "L"                 | 11/14/2012 | T.Y.     |
| C         | ECO-1241: Updated Recommended Mounting Holes | 4/24/2024  | A.V.     |
| D         | ECO-1267: Updated Component Dimensions       | 6/26/2024  | A.V.     |
| E         | ECO-1274: Updated MFG Drawing                | 7/10/2024  | A.V.     |



# CUSTOMER USE DRAWING

|  |                           |   |                          |
|--|---------------------------|---|--------------------------|
| STANDARD TOLERANCE<br>(UNLESS OTHERWISE SPECIFIED)     |                           | <br>4 THOMAS, IRVINE, CA. 92618<br>TEL: (949) 951-8808 FAX: (949) 951-3974 |                          |
| <u>DECIMALS</u><br>.X ± .1<br>.XX ± .02<br>.XXX ± .010 | <u>ANGULAR</u><br>X° ± 1° |    |                          |
| DESIGNED:<br>B. OLIVER                                 | DATE:<br>9/14/2009        | TITLE: FLP ASSEMBLY WITH<br>SMFLP ADAPTER, FLP25  |                          |
| REVISED:<br>K. BARON                                   | DATE:<br>7/10/2024        | DRAWING NO: SMFLP25-X.X<br>REVISION: E  |                          |
| CHECKED:<br>A. VALDEZ                                  | DATE:<br>7/10/2024        | SHEET<br>SIZE   | A<br>CAGE CODE:<br>32559 |
|  |                           | SCALE: 2:1  | SHEET # 1 OF 1           |
| CAD GENERATED DOCUMENT. DO NOT MEASURE DRAWING         |                           |   |                          |

# Mouser Electronics

Authorized Distributor

Click to View Pricing, Inventory, Delivery & Lifecycle Information:

[BIVAR:](#)

[SMFLP25-12.0](#) [SMFLP25-2.5](#) [SMFLP25-3.0](#) [SMFLP25-3.5](#) [SMFLP25-4.0](#) [SMFLP25-5.0](#) [SMFLP25-5.5](#) [SMFLP25-6.0](#) [SMFLP25-7.0](#) [SMFLP25-60.0](#) [SF4-12.0-F7P-2](#) [SF4-12.0-F7P-4](#) [SF4-12.0-F7P-5](#) [SF4-12.0-F7P-6](#) [SF4-12.0-F7P-9](#) [SF4-2.5-F7P-2](#) [SF4-2.5-F7P-4](#) [SF4-2.5-F7P-5](#) [SF4-2.5-F7P-6](#) [SF4-2.5-F7P-9](#) [SF4-3.0-F7P-2](#) [SF4-3.0-F7P-4](#) [SF4-3.0-F7P-5](#) [SF4-3.0-F7P-6](#) [SF4-3.0-F7P-9](#) [SF4-3.5-F7P-2](#) [SF4-3.5-F7P-4](#) [SF4-3.5-F7P-5](#) [SF4-3.5-F7P-6](#) [SF4-3.5-F7P-9](#) [SF4-4.0-F7P-2](#) [SF4-4.0-F7P-4](#) [SF4-4.0-F7P-5](#) [SF4-4.0-F7P-6](#) [SF4-4.0-F7P-9](#) [SF4-5.0-F7P-2](#) [SF4-5.0-F7P-4](#) [SF4-5.0-F7P-5](#) [SF4-5.0-F7P-6](#) [SF4-5.0-F7P-9](#) [SF4-5.5-F7P-2](#) [SF4-5.5-F7P-4](#) [SF4-5.5-F7P-5](#) [SF4-5.5-F7P-6](#) [SF4-5.5-F7P-9](#) [SF4-6.0-F7P-2](#) [SF4-6.0-F7P-4](#) [SF4-6.0-F7P-5](#) [SF4-6.0-F7P-6](#) [SF4-6.0-F7P-9](#)