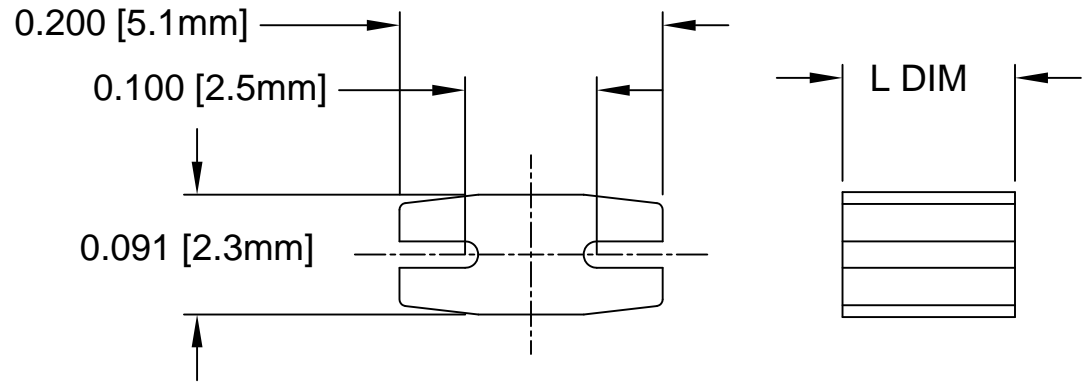



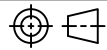
REV.	DESCRIPTION	DATE	APPROVED
A	Engineering Release.	07/11/06	M. C.
B	L DIM Tolerance Update.	10/31/06	M. C.
C	Removed Material Code	05/21/16	J. C.

PART NO.	L DIM ± 0.008	PART NO.	L DIM ± 0.008
MRM2-118	0.118 [3.0mm]	MRM2-492	0.492 [12.5mm]
MRM2-138	0.138 [3.5mm]	MRM2-512	0.512 [13.0mm]
MRM2-157	0.157 [4.0mm]	MRM2-531	0.531 [13.5mm]
MRM2-177	0.177 [4.5mm]	MRM2-551	0.551 [14.0mm]
MRM2-197	0.197 [5.0mm]	MRM2-571	0.571 [14.5mm]
MRM2-217	0.217 [5.5mm]	MRM2-591	0.591 [15.0mm]
MRM2-236	0.236 [6.0mm]	MRM2-610	0.610 [15.5mm]
MRM2-256	0.256 [6.5mm]	MRM2-630	0.630 [16.0mm]
MRM2-276	0.276 [7.0mm]	MRM2-650	0.650 [16.5mm]
MRM2-295	0.295 [7.5mm]	MRM2-669	0.669 [17.0mm]
MRM2-315	0.315 [8.0mm]	MRM2-689	0.689 [17.5mm]
MRM2-335	0.335 [8.5mm]	MRM2-709	0.709 [18.0mm]
MRM2-354	0.354 [9.0mm]	MRM2-728	0.728 [18.5mm]
MRM2-374	0.374 [9.5mm]	MRM2-748	0.748 [19.0mm]
MRM2-394	0.394 [10.0mm]	MRM2-768	0.768 [19.5mm]
MRM2-413	0.413 [10.5mm]	MRM2-787	0.787 [20.0mm]
MRM2-433	0.433 [11.0mm]	MRM2-807	0.807 [20.5mm]
MRM2-453	0.453 [11.5mm]	MRM2-827	0.827 [21.0mm]
MRM2-472	0.472 [12.0mm]		



2. MATERIAL: NYLON 6/6, 94V-0, BLACK.

1. GENERAL SPECIFICATIONS: BIVAR MOLDED COMPONENT SPECIFICATION BV00-E101.

STANDARD TOLERANCE (UNLESS OTHERWISE SPECIFIED)		 4 THOMAS, IRVINE, CA. 92618 TEL: (949) 951-8808 FAX: (949) 951-3974	
DECIMALS	ANGULAR		
.X ± .1	X° ± 1°		TITLE: MOLDED, SELF-RETAINING LED MOUNT
.XX ± .01			PART NO: MRM2-XXX
.XXX ± .005		DESIGNED: T. Yin	DATE: 07/11/06
		CHECKED: M. Chen	DATE: 07/11/06
		CAGE CODE : 32559 SHEET # 1 OF 1	
CAD GENERATED DOCUMENT. DO NOT MEASURE DRAWING.			

Mouser Electronics

Authorized Distributor

Click to View Pricing, Inventory, Delivery & Lifecycle Information:

BIVAR:

[MRM2-118](#) [MRM2-138](#) [MRM2-157](#) [MRM2-177](#) [MRM2-197](#) [MRM2-217](#) [MRM2-236](#) [MRM2-256](#) [MRM2-276](#)
[MRM2-295](#) [MRM2-315](#) [MRM2-335](#) [MRM2-354](#) [MRM2-374](#) [MRM2-394](#) [MRM2-413](#) [MRM2-433](#) [MRM2-453](#) [MRM2-](#)
[472](#) [MRM2-492](#) [MRM2-512](#) [MRM2-531](#) [MRM2-551](#) [MRM2-571](#) [MRM2-591](#) [MRM2-610](#) [MRM2-630](#) [MRM2-650](#)
[MRM2-669](#) [MRM2-689](#) [MRM2-709](#) [MRM2-728](#) [MRM2-748](#) [MRM2-768](#) [MRM2-787](#) [MRM2-807](#) [MRM2-827](#)