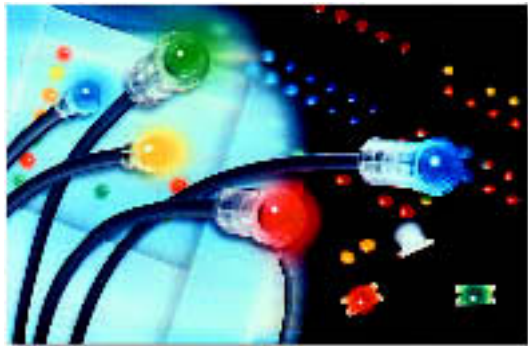


### FLP SERIES



Award winning Flexible Light Pipes were introduced in 1999 to eliminate daughter cards and hard-wired front panel LEDs and to provide designers unmatched flexibility in indicator placement and design. BivarOpto's patented flexible light pipe technology allows for LEDs to be placed anywhere on a PCB or within an enclosure. Installation is by means of a

### Flexible Light Pipes for Through-Hole and Surface Mount

- ◆ Highly Transmissive Optical Grade Materials
- ◆ Secure Press-Fit Panel Mounting
- ◆ Wide, Ultra-Bright Color Selections
- ◆ Through-Hole And Surface Mount Versions
- ◆ Wide Selection Of Lens Shapes And Sizes
- ◆ Custom Lenses Available (Subject To Quotation And Minimum Orders)

simple press-fit application. Retention is vibration and shock resistant. Non-conducting 94V-0 Polycarbonate lenses protect static sensitive components from accidental ESD damage by eliminating potential contact with circuitry. For more information on Bivar's Flexible Light Pipe technology visit us on line at [www.bivar.com](http://www.bivar.com).

#### Mounting Information:

Front Panel: 0.040 [1mm] - 0.125 [3.2mm]  
SMD Adapter Hole Size: 0.094" [2.4mm] diameter  
+ 0.002 (0.05mm), - 0.000 (0.0mm) on  
0.296" [7.5mm] centers ±0.002

#### Material Specifications Plastic Optical Fiber:

Fiber Core: PMMA 94-HB  
Fiber Cladding: Fluorinated Polymer TFE  
Fiber Jacket: 94V-0 PVC Alloy

#### Material Specifications Housings & Adapters:

SMFLP: UL 94V-0 rated, Black 6 Nylon  
Oxygen Index: +28%  
FLP: UL 94V-0 rated, Black 6 Nylon  
Oxygen Index: +28%

#### Application Notes:

Available in lengths from 2.5" [63.5mm] to 328.0' [100m]

After initial captured light loss of approximately 4% for the fiber and 4% for the Fresnel detail there is no significant degradation over practical lengths.

Minimum bend radius of fiber is 10x the diameter or 0.800 [20.3mm]

O603, 0805 and 1206 size SMD LEDs are recommended for use with the SMD adapter with minimum brightness levels of 20 mcd.



#### Ordering Information:

<b>FLP</b>	<b>5</b>	<b>R</b>	<b>6.0</b>	-	<b>SR</b>
Series	Lens	Orientation	Length		Color

#### Series Choices:

FLP (Through-hole)  
SMFLP (Surface Mount Adapter)

#### Lens Choices:

<b>"Blank"</b>	3mm clear lens
<b>5</b>	7mm clear lens
<b>O</b>	oval clear lens
<b>R1</b>	rectangular 2x7 clear lens

#### Orientation: (Through-hole only)

<b>R</b>	Right Angle
<b>V</b>	Vertical

#### Length:

Expressed in inches from 2.5" to 3940.0"  
±0.250 [6.35mm] per 1.0' [304.8mm]

#### Color Options and Suffixes:

Suffix	Color	Peak (nm)	Typ. Vf
SR	Super Red	660nm	1.7
SG	Super Green	568nm	2.2
SY	Super Yellow	585nm	2.1
H	High Efficiency Red	635nm	2.0
SA	Super Amber	610nm	2.2
UBW.6K	Ultra Blue	470nm	3.5
UT	Ultra Turquoise	505nm	3.5
UG	Ultra Green	563nm	2.2



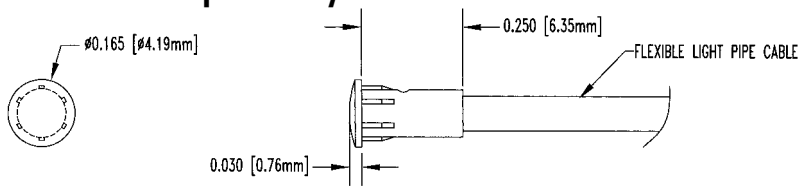
### FLP SERIES

Press-Fit Panel Mount Light Pipes For Through-Hole And SMD LEDs

◆ Oval, Square And Round Lens Choices

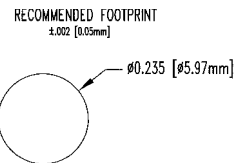
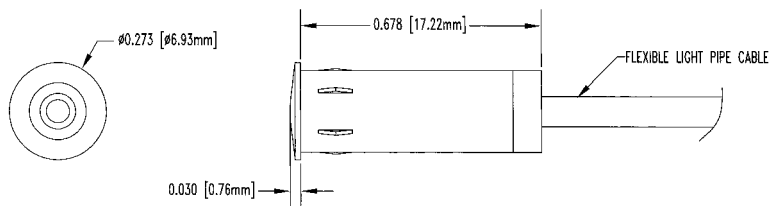
### FLP SERIES

3mm Round Lens Cap Assembly



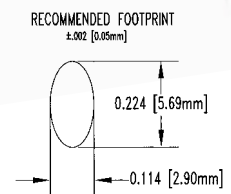
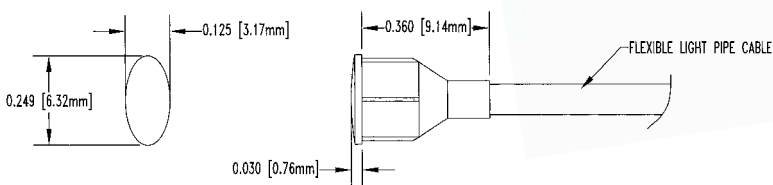
### FLP-5 SERIES

7mm Round Lens Cap Assembly



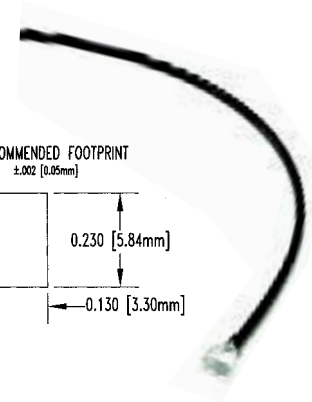
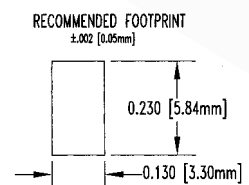
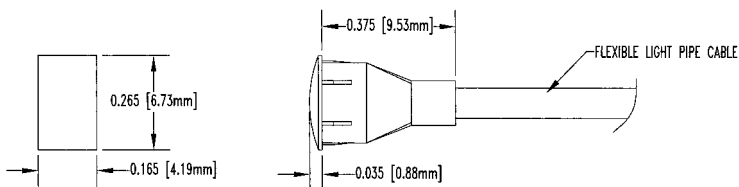
### FLP-0 SERIES

Oval Lens Cap Assembly For Flexible Light Pipe



### FLP-R1 SERIES

Rectangular Lens Cap Assembly For Flexible Light Pipe

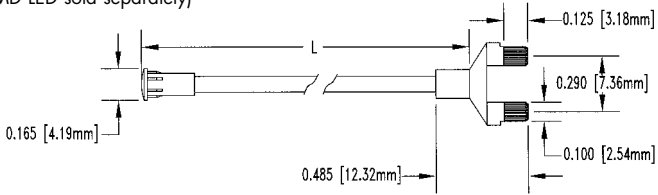


## Flexible Light Pipes

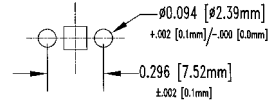
### SMFLP SERIES

#### Flexible Light Pipe SMD LED Adapter

\*3mm version shown  
(SMD LED sold separately)



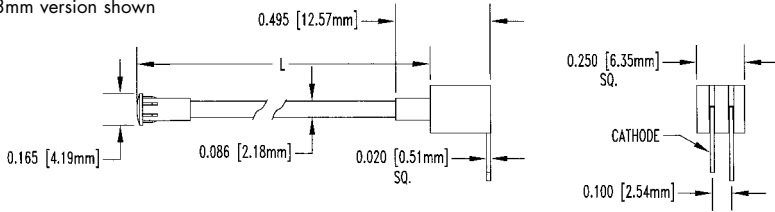
RECOMMENDED FOOTPRINT FOR SMFLP SERIES



### FLPR-XXX SERIES

#### Right Angle Flexible Light Pipe Assembly

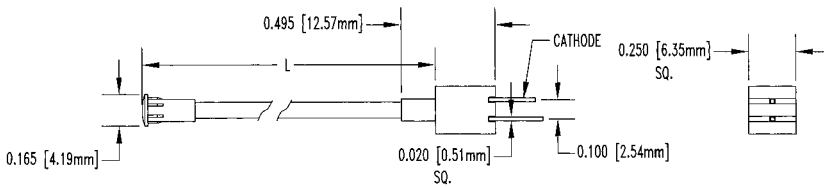
\*3mm version shown



### FLPV-XXX SERIES

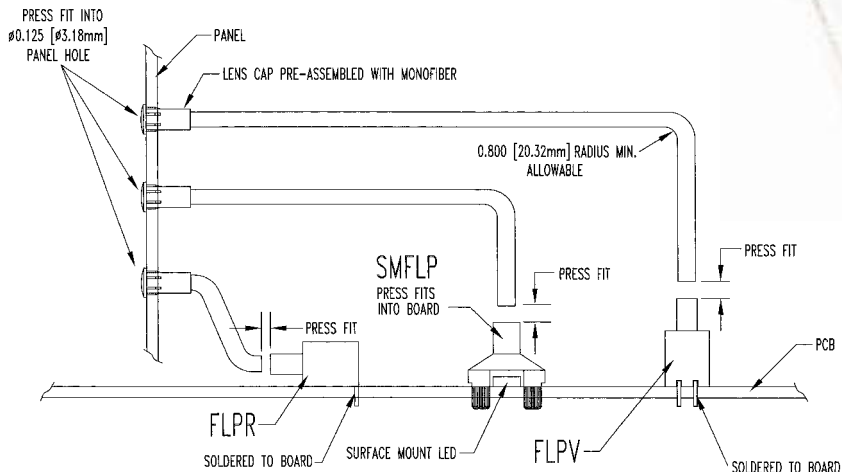
#### Vertical Flexible Light Pipe Assembly

\*3mm version shown



### FLP SERIES

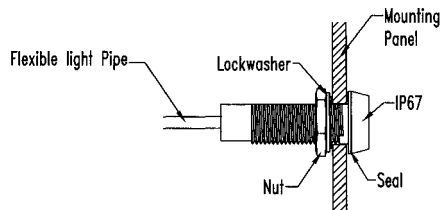
#### Functional Diagram



### IP67 SERIES

#### Watertight Panel Mount Assembly

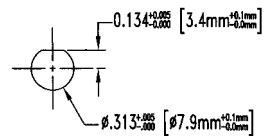
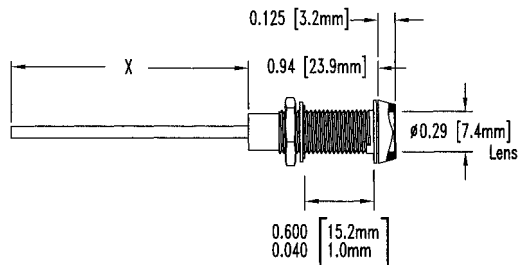
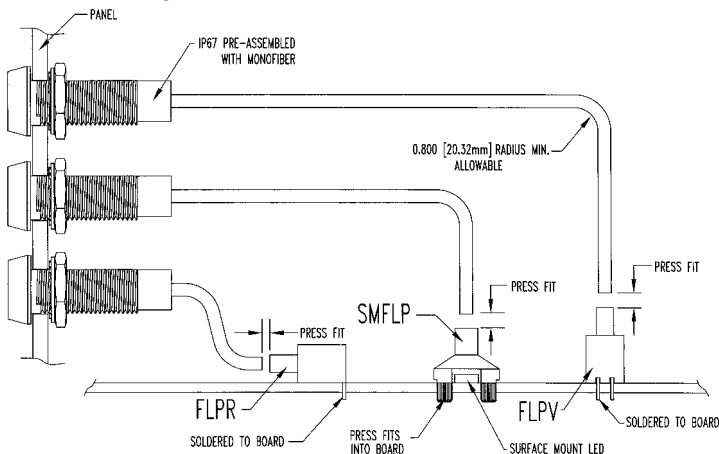
- ◆ Certified IP67 Watertight And Splash Proof Design
- ◆ Micro-Fresnel Lens Focusing And Near 160° Viewing Angle Patented Technology
- ◆ Transports Original LED Intensity Up To 328 Feet (100m)
- ◆ Black Anodized Or Nickel Plated Brass Finish



Panel Mount Detail

### IP67 SERIES

#### Functional Diagram

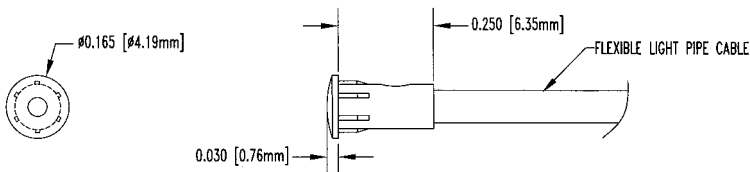


Recommended Panel Cut-Out

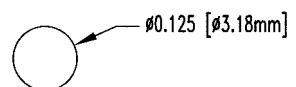
### FLP-IR SERIES

#### Infrared Round Lens Cap Assembly

- ◆ Micro-Fresnel Lens Design Allows Uninterrupted IR Beam Transmission



RECOMMENDED FOOTPRINT  
±.002 [0.05mm]



# Mouser Electronics

Authorized Distributor

Click to View Pricing, Inventory, Delivery & Lifecycle Information:

## BIVAR:

[FLPR6.0-UBW.6K](#) [FLP5R12.0-SA](#) [FLP5R12.0-SR](#) [FLP5R12.0-SY](#) [FLP5R12.0-UG](#) [FLP5R15.0-SG](#)  
[FLP5R24.0UBW.6K](#) [FLP5R3.0-SA](#) [FLP5R3.0-SG](#) [FLP5R3.0-SR](#) [FLP5R3.0-UG](#) [FLP5R36.0UBW.6K](#) [FLP5R36.0-UT](#)  
[FLP5R6.0-SG](#) [FLP5R6.0-SR](#) [FLP5R6.0-SY](#) [FLP5R6.0-UBW.6K](#) [FLP5R6.0-UG](#) [FLP5R9.0-SR](#) [FLP5R9.0-SY](#)  
[FLP5R9.0-UBW.6K](#) [FLP5V12.0-H](#) [FLP5V12.0-SG](#) [FLP5V12.0-SR](#) [FLP5V12.0-SY](#) [FLP5V24.0-H](#) [FLP5V3.0-SG](#)  
[FLP5V3.0-SR](#) [FLP5V3.0-UBW.6K](#) [FLP5V3.0-UG](#) [FLP5V36.0-SA](#) [FLP5V6.0-SG](#) [FLP5V6.0-SR](#) [FLP5V6.0-SY](#)  
[FLP5V6.0-UBW.6K](#) [FLP5V6.0-UG](#) [FLP5V9.0-SR](#) [FLP5V9.0-UBW.6K](#) [FLP5V9.0-UG](#) [FLPOR12.0-UG](#) [FLPOR18.0-](#)  
[SR](#) [FLPOR3.0-SG](#) [FLPOR3.0-SR](#) [FLPOR3.0-SY](#) [FLPOR6.0-SG](#) [FLPOR6.0-UG](#) [FLPOR9.0-SA](#) [FLPOR9.0-UBW.6K](#)  
[FLPOV12.0-SG](#) [FLPOV3.0-SG](#) [FLPOV3.0-SR](#) [FLPOV3.0-SY](#) [FLPOV6.0-SR](#) [FLPOV6.0-SY](#) [FLPOV6.0-UG](#)  
[FLPR12.0-SA](#) [FLPR12.0-SG](#) [FLPR12.0-SY](#) [FLPR12.0-UG](#) [FLPR15.0-SA](#) [FLPR15.0-SR](#) [FLPR15.0-UG](#) [FLPR18.0-](#)  
[SG](#) [FLPR18.0-SY](#) [FLPR1R12.0-SG](#) [FLPR1R3.0-H](#) [FLPR1R3.0-SA](#) [FLPR1R3.0-SG](#) [FLPR1R3.0-SR](#) [FLPR1R3.0-SY](#)  
[FLPR1R3.0UBW.6K](#) [FLPR1R3.0-UG](#) [FLPR1R6.0-SG](#) [FLPR1R6.0-SR](#) [FLPR1R6.0-SY](#) [FLPR1R6.0-UG](#)  
[FLPR1R9.0UBW.6K](#) [FLPR1V3.0-SG](#) [FLPR1V3.0-SR](#) [FLPR1V3.0-UG](#) [FLPR1V6.0-SG](#) [FLPR1V6.0-SR](#) [FLPR1V6.0-](#)  
[SY](#) [FLPR1V9.0-H](#) [FLPR24.0-H](#) [FLPR36.0-SR](#) [FLPR6.0-SA](#) [FLPR6.0-SG](#) [FLPR6.0-SR](#) [FLPR6.0-SY](#) [FLPR6.0-UG](#)  
[FLPR9.0-SG](#) [FLPR9.0-SR](#) [FLPR9.0-SY](#) [FLPR9.0-UBW.6K](#) [FLPR9.0-UG](#) [FLPV12.0-SA](#) [FLPV12.0-SG](#) [FLPV12.0-](#)  
[SR](#) [FLPV12.0-SY](#)