

60mm sq.

San Ace 60L



General Specifications

- Material Frame: Aluminum,
Impeller: Plastics (Flammability: UL94V-1)
- Expected Life Refer to specifications (L10:Survival rate:90% at 60°C ,
rated voltage, and continuously run in a free air state)
- Lead Wire ⊕red ⊖black (Sensor) yellow (Control) brown
- Storage Temperature -30°C to +70°C (Non-condensing)

60×60×25mm (Mass : 100g) **9LG type** **High Airflow**

Specifications

The following nos. **have PWM controls and pulse sensors.**

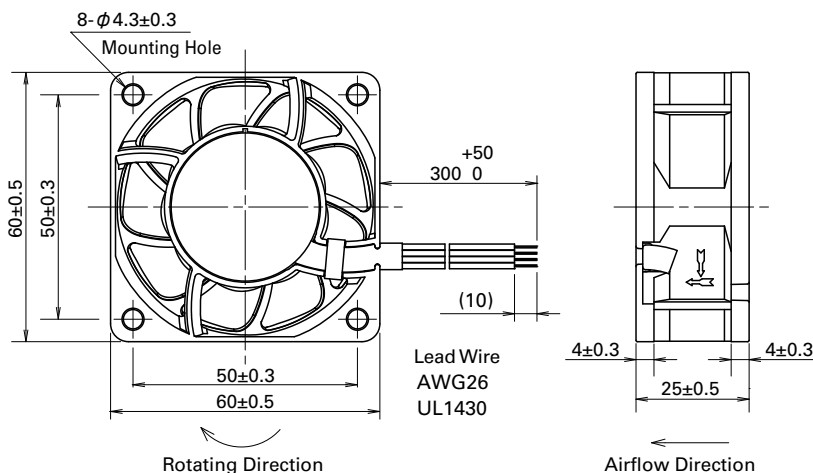
| Model No. | Rated Voltage [V] | Operating Voltage Range [V] | PWM duty cycle ^{Note1)} [%] | Rated Current [A] | Rated Input [W] | Rated Speed [min ⁻¹] | Max. Airflow [m ³ /min] [CFM] | Max. Static Pressure [Pa] [inchH ₂ O] | SPL [dB(A)] | Operating Temperature [°C] | Expected Life [h] | | |
|---------------|-------------------|-----------------------------|--------------------------------------|-------------------|-----------------|----------------------------------|--|--|-------------|----------------------------|-------------------|------------|----|
| 9LG0612P4S001 | 12 | 10.8 to 13.2 | 100 | 0.67 | 8.04 | 11,000 | 1.40 49.4 | 300 1.204 | 53 | -20 to +70 | 180,000/60°C | | |
| | | | 20 | 0.06 | 0.72 | 2,900 | 0.36 12.7 | 20.8 0.083 | 20 | | | | |
| 9LG0612P4J001 | | | 100 | 0.39 | 4.68 | 8,650 | 1.10 38.8 | 182 0.730 | 47 | | | | |
| | | | 20 | 0.03 | 0.36 | 1,150 | 0.13 4.8 | 3.3 0.013 | 14 | | | | |
| 9LG0612P4H001 | | | 100 | 0.17 | 2.04 | 6,150 | 0.78 27.5 | 97 0.389 | 35 | | | | |
| | | | 20 | 0.03 | 0.36 | 1,350 | 0.17 6.0 | 4.7 0.018 | 14 | | | | |
| 9LG0612P4M001 | | | 100 | 0.09 | 1.08 | 4,200 | 0.53 18.7 | 45 0.180 | 24 | | | | |
| | | | 20 | 0.03 | 0.36 | 900 | 0.11 3.8 | 2.0 0.008 | 14 | | | | |
| 9LG0624P4S001 | | | 24 | 21.6 to 26.4 | 100 | 0.34 | 8.16 | 11,000 | 1.40 49.4 | | | 300 1.204 | 53 |
| | | | | | 20 | 0.03 | 0.72 | 2,900 | 0.36 12.7 | | | 20.8 0.083 | 20 |
| 9LG0624P4J001 | | | | | 100 | 0.19 | 4.56 | 8,650 | 1.10 38.8 | | | 182 0.730 | 47 |
| | | | | | 20 | 0.02 | 0.48 | 2,200 | 0.28 9.8 | | | 12.0 0.048 | 17 |
| 9LG0624P4H001 | 100 | 0.08 | | | 1.92 | 6,150 | 0.78 27.5 | 97 0.389 | 35 | | | | |
| | 20 | 0.02 | | | 0.48 | 1,300 | 0.16 5.6 | 4.3 0.017 | 14 | | | | |
| 9LG0624P4M001 | 100 | 0.04 | | | 0.96 | 4,200 | 0.53 18.7 | 45 0.180 | 24 | | | | |
| | 20 | 0.01 | | | 0.24 | 800 | 0.10 3.5 | 1.6 0.006 | 14 | | | | |
| 9LG0648P4S001 | 48 | 36 to 72 | | | 100 | 0.18 | 8.64 | 11,000 | 1.40 49.4 | 305 1.224 | 53 | | |
| | | | | | 20 | 0.02 | 0.96 | 2,900 | 0.36 12.7 | 20.8 0.083 | 20 | | |
| 9LG0648P4J001 | | | | | 100 | 0.10 | 4.80 | 8,650 | 1.10 38.8 | 182 0.730 | 47 | | |
| | | | | | 20 | 0.02 | 0.96 | 2,100 | 0.26 9.1 | 10.7 0.042 | 17 | | |
| 9LG0648P4H001 | | | 100 | 0.06 | 2.88 | 6,150 | 0.78 27.5 | 97 0.389 | 35 | | | | |
| | | | 20 | 0.02 | 0.96 | 1,000 | 0.12 4.2 | 2.5 0.010 | 14 | | | | |
| 9LG0648P4M001 | | | 100 | 0.04 | 1.92 | 4,200 | 0.53 18.7 | 45 0.180 | 24 | | | | |
| | | | 20 | 0.02 | 0.96 | 650 | 0.08 2.8 | 1.0 0.004 | 14 | | | | |

Note : Fan does not rotate when PWM duty cycle is 0%.

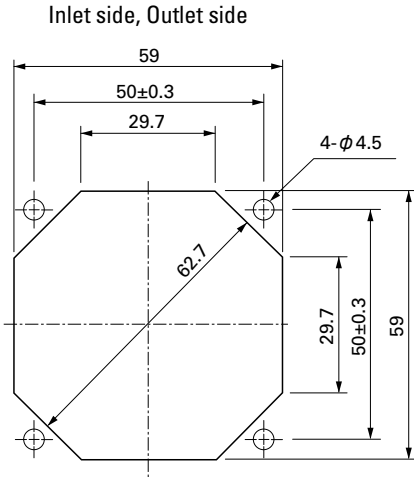
※PWM Frequency : 25kHz

Other sensor specifications are available as options. Please refer to the index (p. 509).

Dimensions (unit: mm)



Reference Dimensions of Mounting Holes and Vent Opening (unit: mm)



Options (unit: mm)

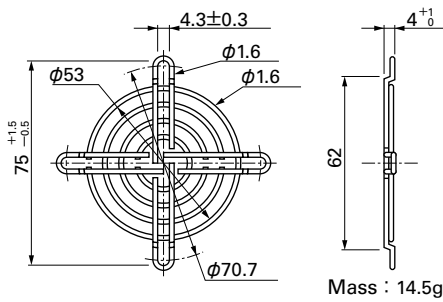
Finger Guards

Model : 109-139E Surface treatment : Nickel-chrome plating (silver)
 : 109-139H : Cation electropainting (black)

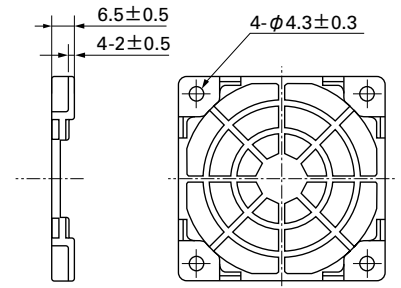
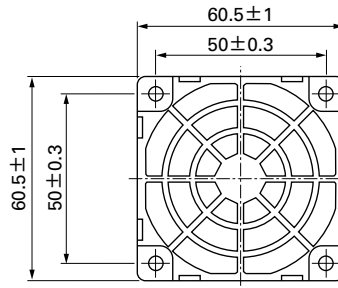
Resin Finger Guards

Model : 109-1003G

Inlet side, Outlet side



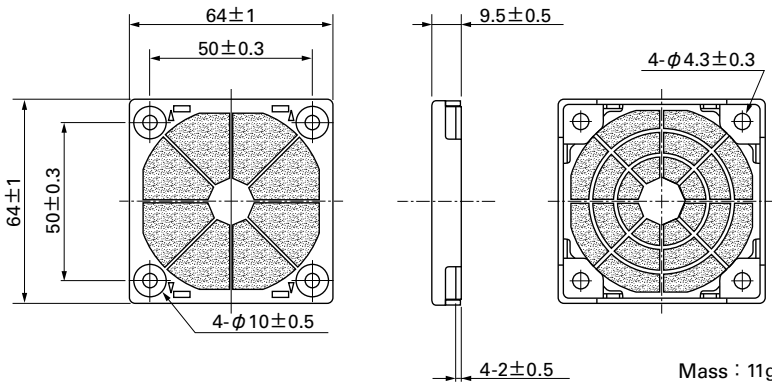
Mass : 14.5g



Mass : 7g

Resin Filter Kits

Model : 109-1003F13 (13PPI), 109-1003F20 (20PPI)
 : 109-1003F30 (30PPI), 109-1003F40 (40PPI)



Mass : 11g

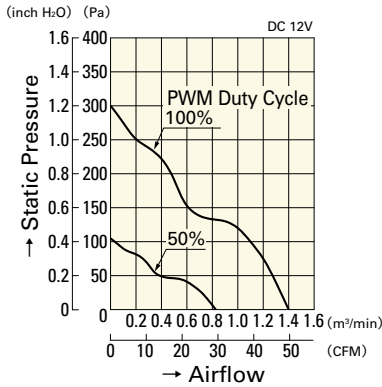
60mm sq.

San Ace 60L

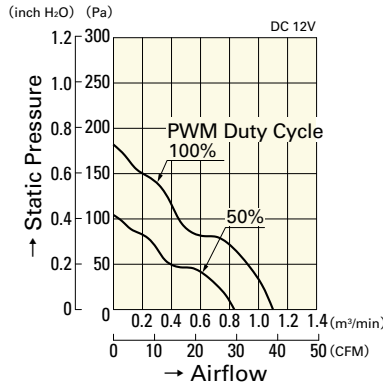
60×60×25mm [Mass : 100g]

Airflow - Static Pressure Characteristics

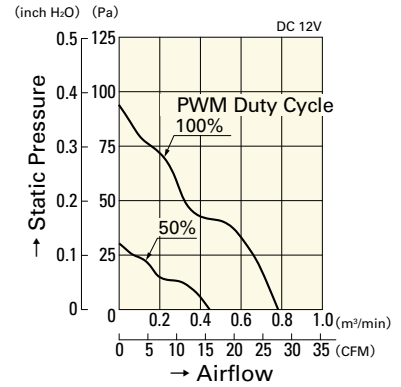
PWM Duty Cycle



9LG0612P4S001

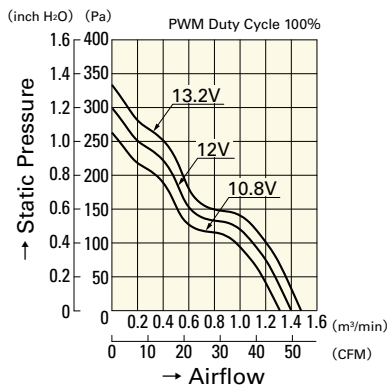


9LG0612P4J001

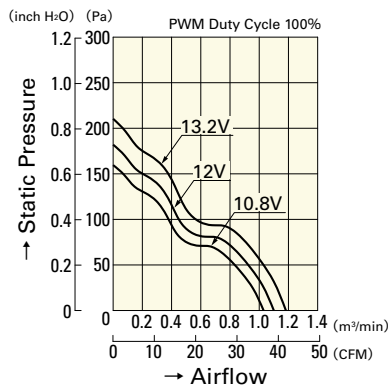


9LG0612P4H001

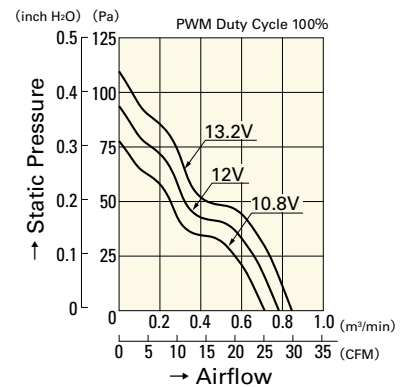
Operating Voltage Range



9LG0612P4S001

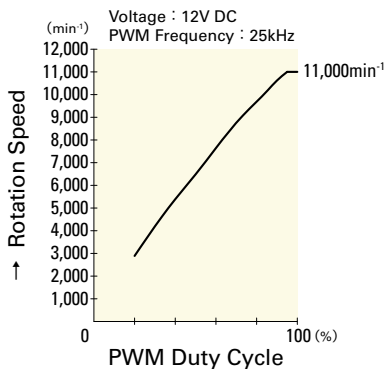


9LG0612P4J001

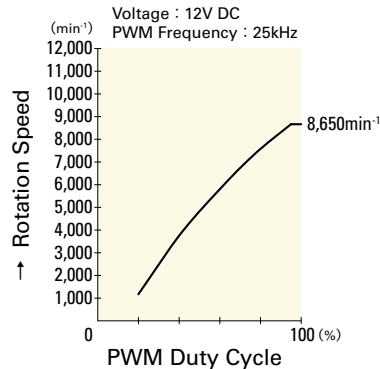


9LG0612P4H001

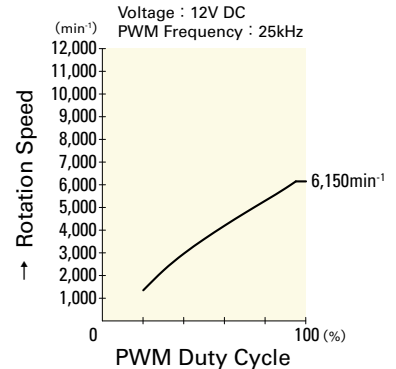
PWM Duty - Speed Characteristics Example



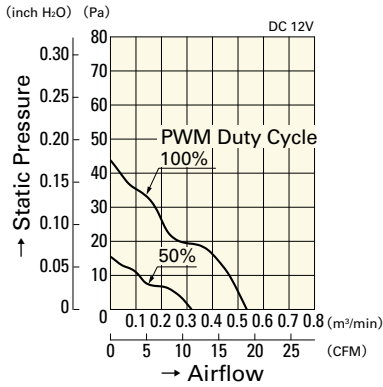
9LG0612P4S001



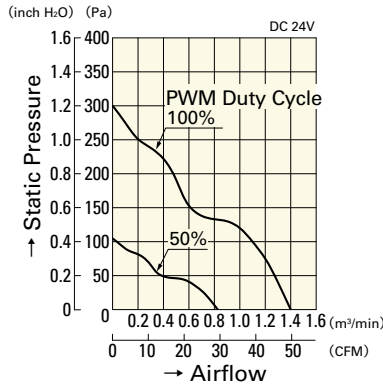
9LG0612P4J001



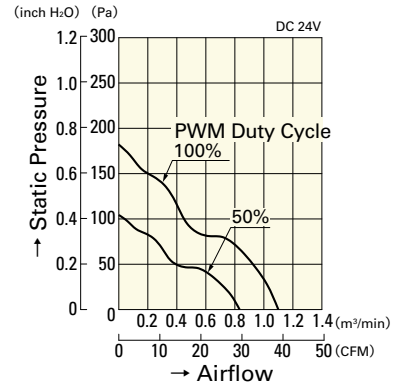
9LG0612P4H001



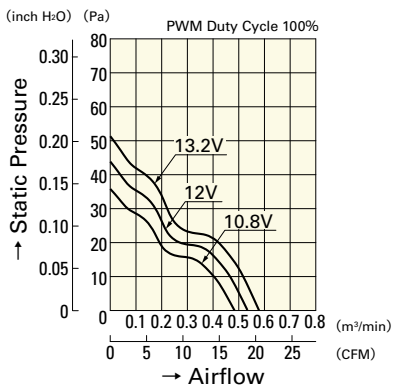
9LG0612P4M001



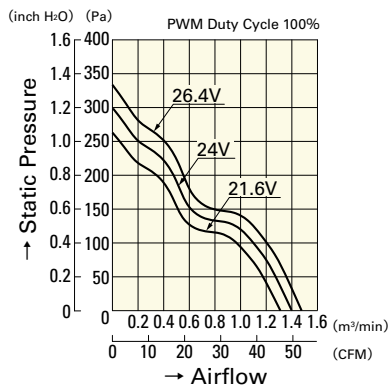
9LG0624P4S001



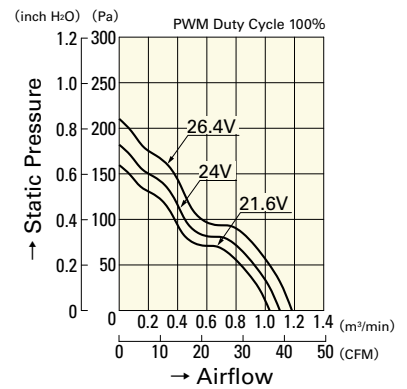
9LG0624P4J001



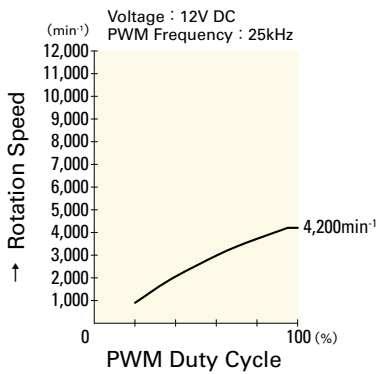
9LG0612P4M001



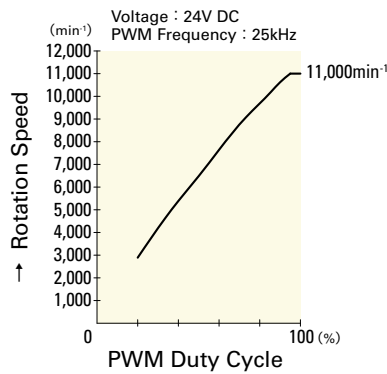
9LG0624P4S001



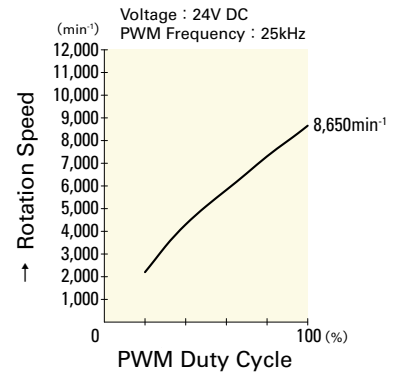
9LG0624P4J001



9LG0612P4M001



9LG0624P4S001



9LG0624P4J001

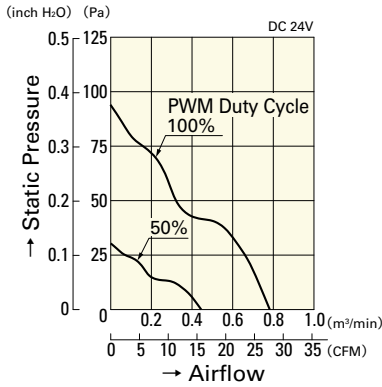
60mm sq.

San Ace 60L

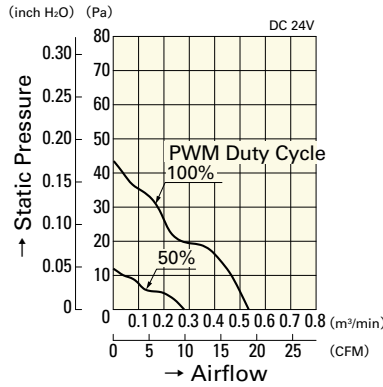
60×60×25mm [Mass : 100g]

Airflow - Static Pressure Characteristics

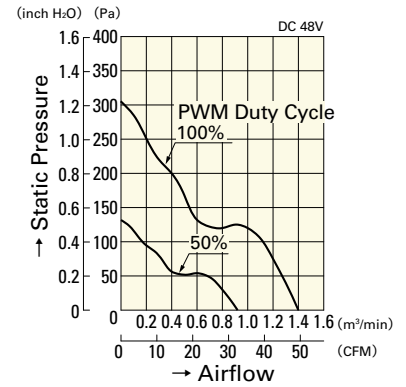
PWM Duty Cycle



9LG0624P4H001

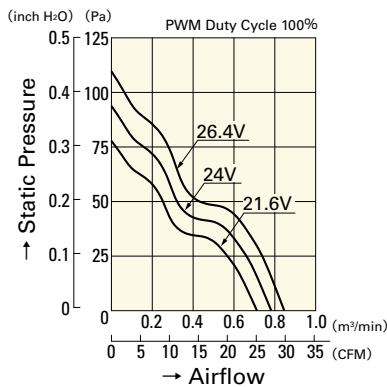


9LG0624P4M001

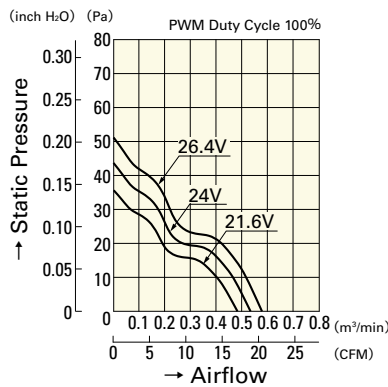


9LG0648P4S001

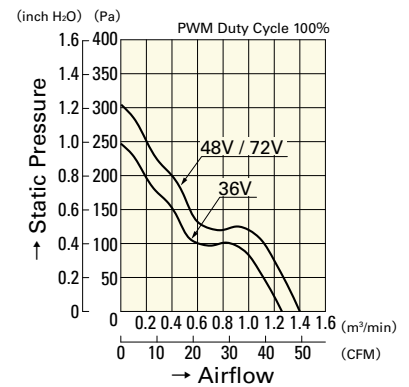
Operating Voltage Range



9LG0624P4H001

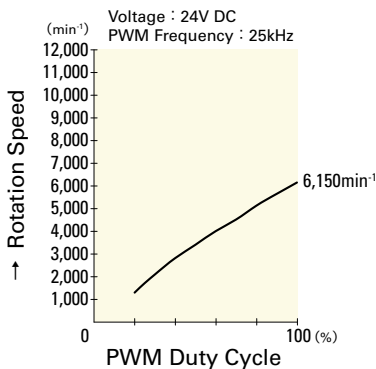


9LG0624P4M001

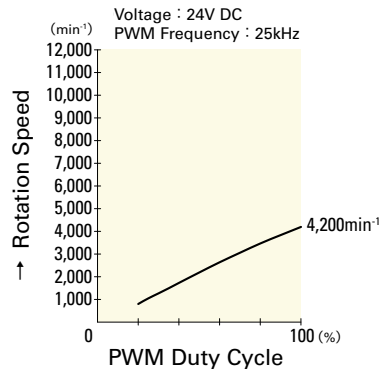


9LG0648P4S001

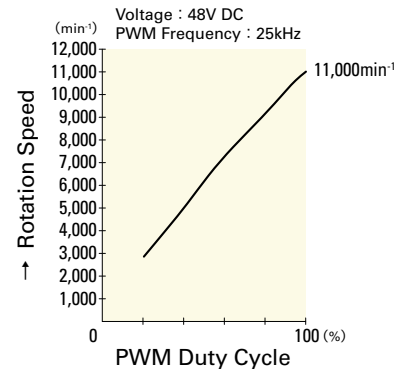
PWM Duty - Speed Characteristics Example



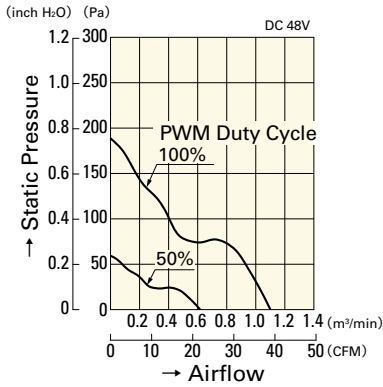
9LG0624P4H001



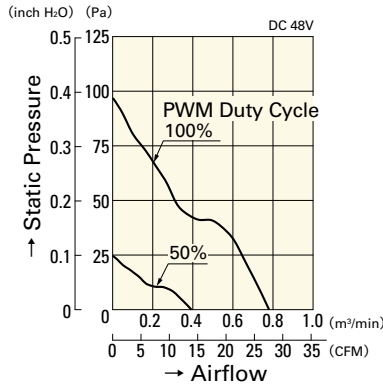
9LG0624P4M001



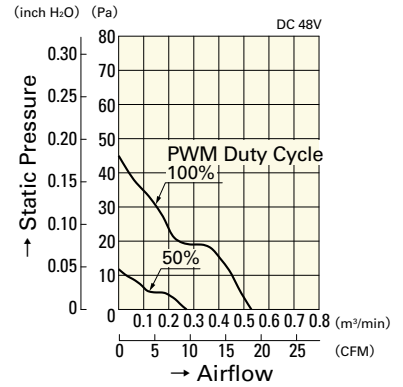
9LG0648P4S001



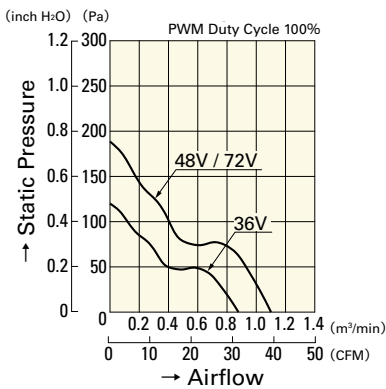
9LG0648P4J001



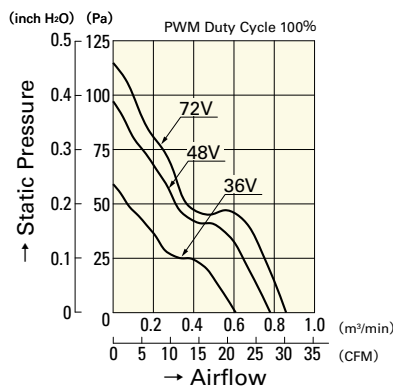
9LG0648P4H001



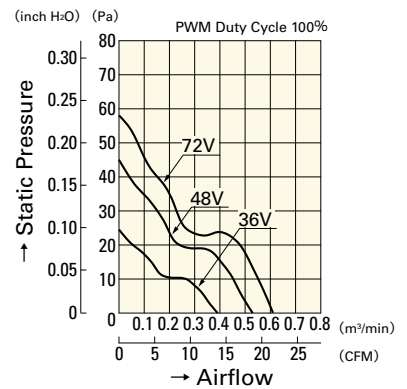
9LG0648P4M001



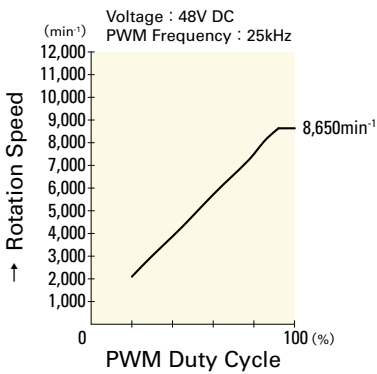
9LG0648P4J001



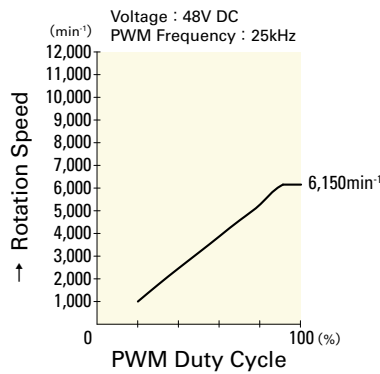
9LG0648P4H001



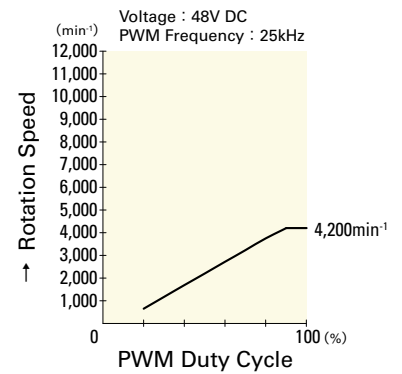
9LG0648P4M001



9LG0648P4J001



9LG0648P4H001



9LG0648P4M001

Mouser Electronics

Authorized Distributor

Click to View Pricing, Inventory, Delivery & Lifecycle Information:

Sanyo Denki:

[9LG0612P4M001](#) [9LG0648P4H001](#) [9LG0624P4M001](#) [9LG0624P4J001](#) [9LG0648P4J001](#) [9LG0624P4S001](#)
[9LG0612P4H001](#) [9LG0612P4J001](#) [9LG0624P4H001](#) [9LG0612P4S001](#) [9LG0648P4S001](#) [9LG0648P4M001](#)