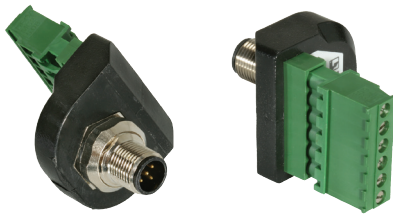


## M12-Receptacle Connectors In Accordance With IEC 61076-2-101

### RSF 5 TB | RKF 5 TB

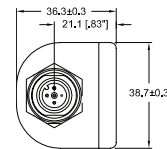


### Male, 5-Pole to Terminal Block

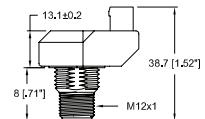
Receptacle, 5-pole, male to terminal block receptacle.

– especially suitable for panel-mount/  
feedthrough applications –

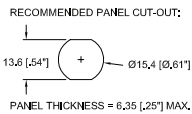
### RSF 5 TB



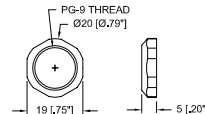
Front View



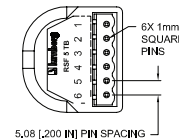
Side View



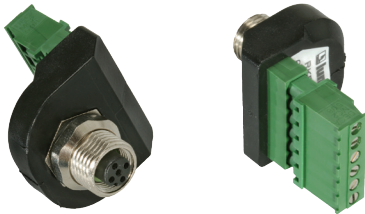
Recommended Panel  
Cut-Out



Panel Nut Dimensions



Rear View

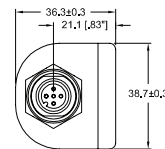


### Female, 5-Pole to Terminal Block

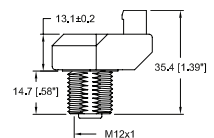
Receptacle, 5-pole, female to terminal block receptacle.

– especially suitable for panel-mount/  
feedthrough applications –

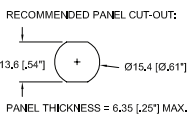
### RKF 5 TB



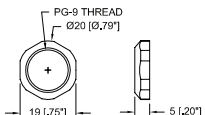
Front View



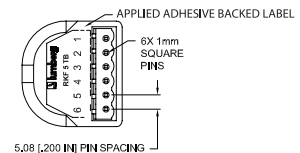
Side View



Recommended Panel  
Cut-Out



Panel Nut Dimensions

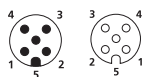


Rear View

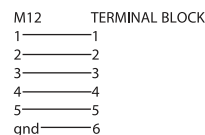
### Pin Assignments

#### Face Views / M12

#### Male / Female



#### Wiring Diagram





**M12-Receptacle Connectors In Accordance With IEC 61076-2-101**  
RSF 5 TB | RKF 5 TB

**Technical Data**

**Environmental**

Degree of protection IP 67 / NEMA 6P  
Operating temperature range -25°C (-13°F) / +90°C (+194°F)


**Mechanical**

M12 Connector  
Shell CuZn, nickel plated  
Panel Nut CuZn, nickel plated  
Contacts CuZn, gold plated  
Insert Polyurethane, black  
Sealing Viton  
  
Terminal Block Receptacle  
Header Body Polyamide 66, green  
Pins CuZn, tin plated  
Overmold Polyamide, black

**Electrical**

Current rating 4 A  
Voltage rating 250 V

**Recommended Mating Terminal Block**  
(Lumberg Part Numbers)  
MC 200-508-06 90° wire exit (included))

Part Number		Pins	Characteristics
RSF 5 TB	RKF 5 TB	5	

# Mouser Electronics

Authorized Distributor

Click to View Pricing, Inventory, Delivery & Lifecycle Information:

[Lumberg Automation:](#)

[RKF 5 TB](#) [RSF 5 TB](#)