

## M12-Receptacle Connectors In Accordance With IEC 61076-2-101

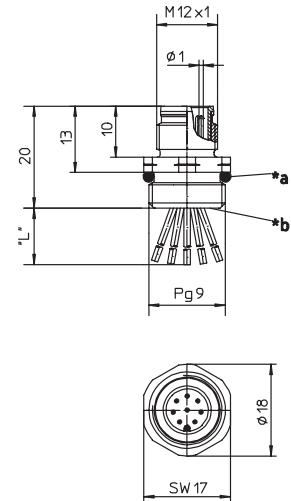
RSF 3...8 | RKF 3...8



### Male, 3-, 4-, 5- and 8-Pole

Receptacle, 3-, 4-, 5-, and 8-pole, male, M12 for front mounting, 24 and 22 AWG, panel mount thread PG9.

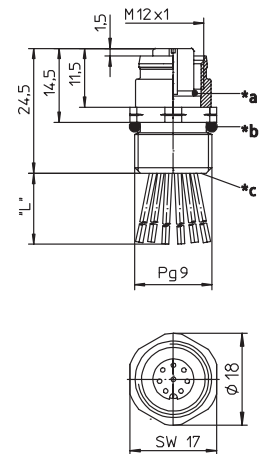
RSF 3...8



### Female, 3-, 4-, 5- and 8-Pole

Receptacle, 3-, 4-, 5-, and 8-pole, female, M12 for front mounting, 24 and 22 AWG, panel mount thread PG9.

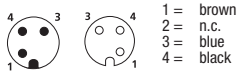
RKF 3...8



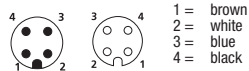
## Pin Assignments

### Face Views / M12, Male / Female

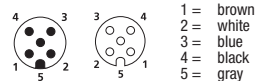
#### 3 pole



#### 4 pole

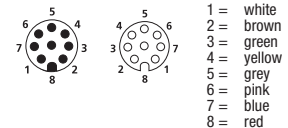


#### 5 pole



Note for 5 pole receptacles with pin 5 color code of green-yellow see part numbers RSFM 5/0.5M and RKFM 5/0.5M

#### 8 pole





## M12-Receptacle Connectors In Accordance With IEC 61076-2-101

RSF 3...8 | RKF 3...8

### Technical Data

#### Environmental

Degree of protection IP 67 / NEMA 6P  
Operating temperature range -40°C (-40°F) / +90°C (+194°F)

#### Mechanical








Housing Brass, nickel-plated  
Insert PUR, black (female)  
3-, 4- and 5-Pole: Nylon (male)  
8-Pole: PUR, black (male)  
Contact Brass, gold over nickel-plated

#### Electrical

Current rating 3-5 Pole: 4 A  
8 Pole: 1.5 A  
Voltage rating 3 & 4 Pole: 250 V  
5 Pole: 60V  
8 Pole: 30 V / 36 V DC

#### Accessories

Panel nut (RSKF 9)

Part Number		Pins	Characteristics
RSF 3/0.5M	RKF 4-3/0.5M	3	 
RSF 4/0.5M	RKF 4/0.5M	4	 
RSF 5/0.5M	RKF 5/0.5M	5	 
RSF 8/0.5M	RKF 8/0.5M	8	 

# Mouser Electronics

Authorized Distributor

Click to View Pricing, Inventory, Delivery & Lifecycle Information:

## Lumberg Automation:

[RSF 3/0.5M](#) [RSF 5/0.5M \(#5 wire GN/YL\)](#) [RSF 5/2M \(#5 WIRE GY\)](#) [RSF 4/0.5M](#) [RSF 5/0.5M \(#5 wire GY\)](#) [RSF](#)  
[4/1M](#) [RSF 8/0.5M](#)