

M12-Receptacle Connectors In Accordance With IEC 61076-2-101

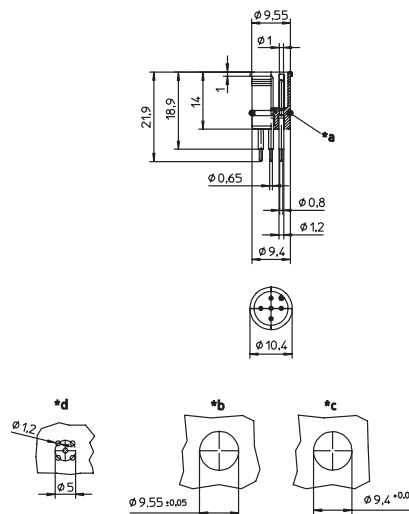
RSEL | RSELP



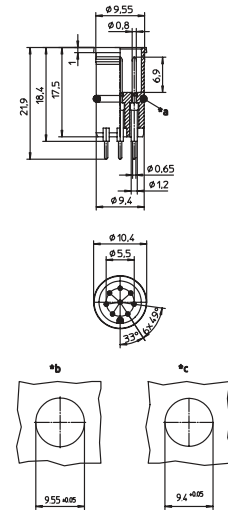
Male, 4-, 5-, and 8-Pole

Receptacle connector, M12 male connector for sensors, solder contacts for printed circuit board mounting.

RSEL

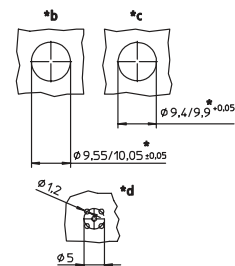
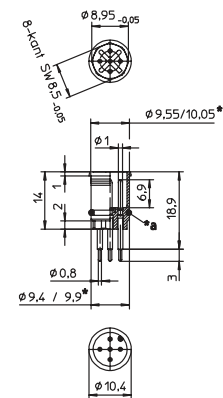


RSEL 8 POLE



- *a O-ring enclosed separately
- *b ventilation hole
- *c cut out with O-ring
- *d cut out without O-ring

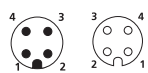
RSELP



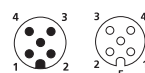
Pin Assignments

Face Views / M12, Male / Female

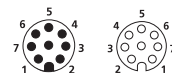
4 pole



5 pole



8 pole





Be Certain with Belden

M12-Receptacle Connectors In Accordance With IEC 61076-2-101

RSEL | RSELP

Technical Data

Environmental

Degree of protection IP 67 / NEMA 6P
Operating temperature range -25°C (-13°F) / +80°C (+194°F)

Mechanical

Insert PA
Contact CuZn, pre-nickel and 0.8 microns gold-plated
O-ring FKM
Mode of connection printed circuit board mount

Electrical

Contact resistance $\leq 5 \text{ m}\Omega$
Nominal current at 40°C
4–5 poles 4 A
8 poles 2 A
Nominal voltage
4 poles 240 V
5 poles 60 V
8 poles 30 V
encapsulated
Rated voltage
4 poles 250 V
5 poles 63 V
8 poles 36 V
Test voltage
4 poles 2.0 kV eff. / 60 s
5–8 poles 1.5 kV eff. / 60 s
Insulation resistance $> 10^9 \Omega$
Pollution degree 3

Part Number	Pins	Characteristics
RSEL 4 RSELP 4	4	 
RSEL 5 RSELP 5	5	 
RSEL 8	8	 

Mouser Electronics

Authorized Distributor

Click to View Pricing, Inventory, Delivery & Lifecycle Information:

[Lumberg Automation:](#)

[RSELP 4](#) [RSELP 5](#)