

## M12-Receptacle Connectors In Accordance With IEC 61076-2-101

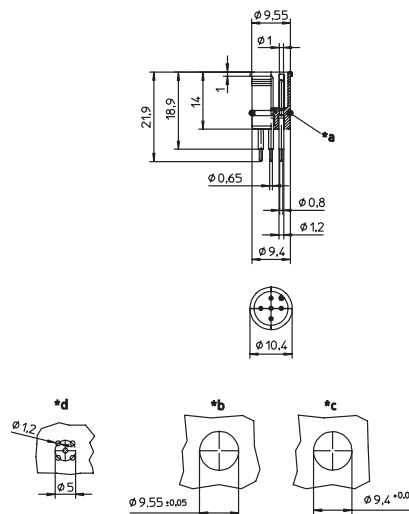
### RSEL | RSELP



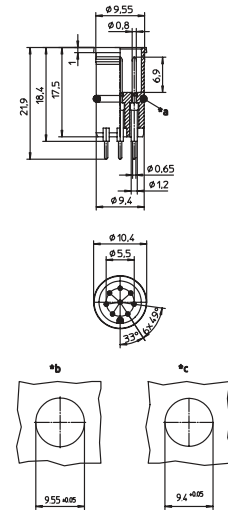
### Male, 4-, 5-, and 8-Pole

Receptacle connector, M12 male connector for sensors, solder contacts for printed circuit board mounting.

#### RSEL

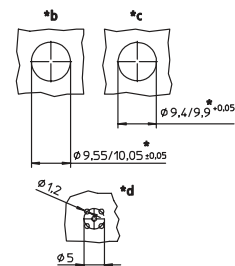
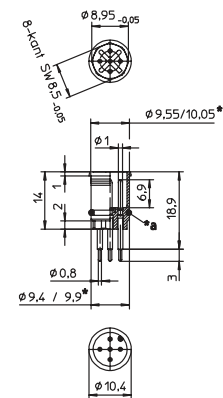


### RSEL 8 POLE



- \*a O-ring enclosed separately
- \*b ventilation hole
- \*c cut out with O-ring
- \*d cut out without O-ring

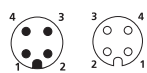
### RSELP



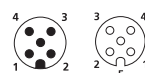
### Pin Assignments

#### Face Views / M12, Male / Female

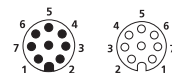
#### 4 pole



#### 5 pole



#### 8 pole





Be Certain with Belden

## M12-Receptacle Connectors In Accordance With IEC 61076-2-101

RSEL | RSELP

### Technical Data

#### Environmental

Degree of protection IP 67 / NEMA 6P  
Operating temperature range -25°C (-13°F) / +80°C (+194°F)

#### Mechanical

Insert PA  
Contact CuZn, pre-nickel and 0.8 microns gold-plated  
O-ring FKM  
Mode of connection printed circuit board mount

#### Electrical

Contact resistance  $\leq 5 \text{ m}\Omega$   
Nominal current at 40°C  
4–5 poles 4 A  
8 poles 2 A  
Nominal voltage  
4 poles 240 V  
5 poles 60 V  
8 poles 30 V  
encapsulated  
Rated voltage  
4 poles 250 V  
5 poles 63 V  
8 poles 36 V  
Test voltage  
4 poles 2.0 kV eff. / 60 s  
5–8 poles 1.5 kV eff. / 60 s  
Insulation resistance  $> 10^9 \Omega$   
Pollution degree 3

Part Number		Pins	Characteristics
RSEL 4	RSELP 4	4	 
RSEL 5	RSELP 5	5	 
RSEL 8		8	 

# Mouser Electronics

Authorized Distributor

Click to View Pricing, Inventory, Delivery & Lifecycle Information:

[Lumberg Automation:](#)

[RSEL 4](#) [RSEL 5](#) [RSEL 8](#)