

M23 Field Attachable Connectors

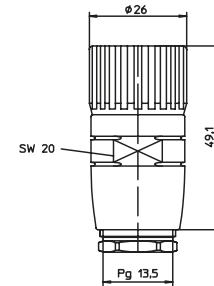
RKC.../13.5 | RKCW...13.5



Female, 12- and 19-Pole

Field attachable connector, M23 male connector 12- and 19-pole with threaded joint, external thread, assembling with solder connections.

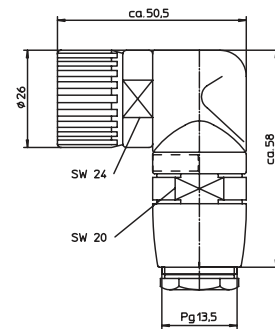
RKC.../13.5



Female, 12- and 19-Pole

Field attachable connector, M23 male connector 12- and 19-pole, right angle with threaded joint, external thread, assembling with solder connections.

RKCW...13.5



Pin Assignments

M23 - Male

12 poles



19 poles





Be Certain with Belden

M23 Field Attachable Connectors

RKC.../13.5 | RKCW...13.5

Technical Data

Environmental





Degree of protection IP 67
Operating temperature range -40°C (-40°F) / +125°C (+257°F)

Mechanical

Housing / Molded body CuZn, nickel-plated
Insert PBT GF
Contact CuZn, pre-nickel-plated and 0.8 microns gold-plated
Receptacle shell CuZn, nickel-plated
O-ring FKM
Mode of connection solder connection
Connectable conductor max. 1.0 mm²

Electrical

Contact resistance ≤ 5 mΩ
Nominal current at 40°C 12 poles 7.5 A
19 poles 7.5 A pin Ø 1 mm, 10 A pin Ø 1.5 mm
Nominal voltage 12 poles 240 V
19 poles 120 V
Rated voltage 12 poles 250 V
19 poles 125 V
Test voltage 12 poles 2.5 kV eff./ 60 s
19 poles 1.5 kV eff./ 60 s
Insulation resistance > 10⁹ Ω
Pollution degree 3

Part Number		Pins	Cable Diameter Range	Characteristics
Female	Female 90°			
RKC 120/13.5	RKCW 120/13.5	12	Ø 10.0 – 14.0 mm	 
RKC 190/13.5	RKCW 190/13.5	19	Ø 10.0 – 14.0 mm	 

Mouser Electronics

Authorized Distributor

Click to View Pricing, Inventory, Delivery & Lifecycle Information:

Lumberg Automation:

[RKCW 120/13.5 single pk of 1](#) [RKCW 190/13.5 single pk of 1](#) [RKC 120/13.5 single pk of 1](#) [RKC 190/13.5 single pk of](#)

1