

## M8-Receptacle Connectors In Accordance With IEC 61076-2-104

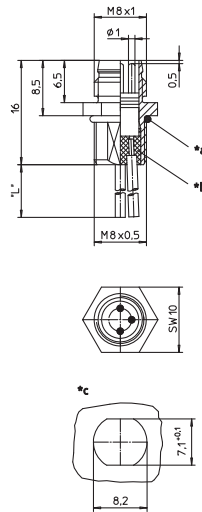
### RSMF/0.5 M | RKMf/0.5 M



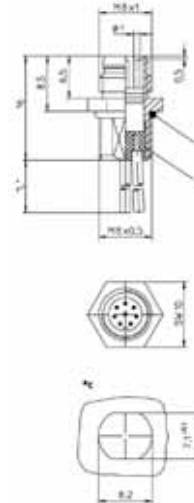
### Male, 3-, 4-, and 8-Pole

Receptacle connector, M8 male connector for front mounting, assembled stranded wire, solder contacts potted with epoxy, chassis side thread M8 x 0.5 (panel nut RSKF 8).

### RSMF 3/0.5 M



### RSMF 8/0.5 M



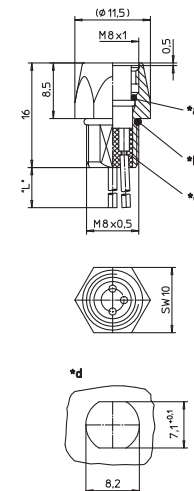
\*a O-ring enclosed separately  
\*b solder contacts potted with epoxy  
\*c cut out  
\*L 0.5 m



### Female, 3-, 4-, and 8-Pole

Receptacle connector, M8 female connector for front mounting, assembled stranded wire, solder contacts potted with epoxy, chassis side thread M8 x 0.5 (panel nut RSKF 8).

### RKMf/0.5 M

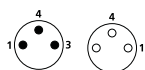


\*a O-Ring  
\*b O-ring enclosed separately  
\*c solder contacts potted with epoxy  
\*d cut out  
\*L 0.5 m

### Pin Assignments

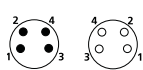
#### Face Views

#### M8 - 3 poles



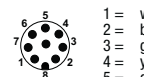
1 = brown  
2 = blue  
4 = black

#### M8 - 4 poles



1 = brown  
2 = white  
3 = blue  
4 = black

#### M8 - 8 poles



1 = white  
2 = brown  
3 = green  
4 = yellow  
5 = grey  
6 = pink  
7 = blue  
8 = red



Be Certain with Belden

## M8-Receptacle Connectors In Accordance With IEC 61076-2-104

RSMF/0.5 M | RKMF/0.5 M

### Technical Data

#### Environmental

|                             |                                |
|-----------------------------|--------------------------------|
| Degree of protection        | IP 67 / NEMA 6P                |
| Operating temperature range | -25°C (-13°F) / +80°C (+176°F) |

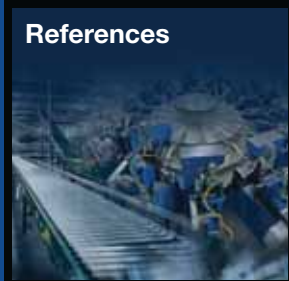
#### Mechanical

|                       |  |
|-----------------------|--|
| Housing / Molded body | CuZn, nickel-plated                                    |
| Insert                | PA   |
| Contact               | CuZn, pre-nickel-coated and<br>0.8 microns gold-plated |
| O-ring                | FKM  |

#### Electrical

|                         |  |
|-------------------------|--|
| Contact resistance      | RSMF: $\leq 5 \text{ m}\Omega$                   |
| Nominal current at 40°C | RSMF 8: 1 A<br>RSMF: 4 A                         |
| Nominal voltage         | 60 V<br>RSMF 8: 32 V                             |
| Test voltage            | 1.5 kV eff. / 60 s<br>RSMF 8: 0.8 kV eff. / 60 s |
| Insulation resistance   | $> 10^9 \Omega$                                  |
| Pollution degree        | 3  |

| Part Number                    | Pins | Characteristics   |
|--------------------------------|------|---|
| RSMF 3/0,5 M      RKMF 3/0,5 M | 3    |   |
| RSMF 4/0,5 M      RKMF 4/0,5 M | 4    |   |
| RSMF 8/0,5 M                   | 8    |   |



Be Certain with Belden

## Part Number Configurations: Pico M8, Receptacles and Field Attachable Connectors

# RSMF 3 / 0.5M

| Poles | Panel Mount | Mounting | Threads  | Voltage Rating | Color Code | Female Straight | Male Straight | Pins    | Lead Length |
|-------|-------------|----------|----------|----------------|------------|-----------------|---------------|---------|-------------|
| 3     | Rear        | PCB      | M10 x 1  | 60 V           | IEC        | RKMHL           | RSMHL         | 3/S 5.5 |             |
| 4     | Rear        | PCB      | M10 x 1  | 60 V           | IEC        | RKMHL           | RSMHL         | 4/S 5.5 |             |
| 3     | Front       |          | M8 x 0.5 | 60 V           | IEC        | RKMF            | RSMF          | 3       | 0.5 M       |
| 4     | Front       |          | M8 x 0.5 | 60 V           | IEC        | RKMF            | RSMF          | 4       | 0.5 M       |
| 8     | Front       |          | M8 x 0.5 | 32 V           | IEC        |                 | RSMF          | 8       | 0.5 M       |

**Table 14:** Part Number Configurations for Pico M8 Receptacles

**EXAMPLE:** Receptacle

**RSMF 3/0.5M** = Pico M8, Receptacle, Male Straight, 3 Pins with 0.5 meter leads.

**NOTE:** Areas without a part number identifier are considered to be a special order.

# RKMC 4

| Poles | Screw Joint    | Male Straight Solder Connections | Male 90° Solder Connections | Male Straight Screw Terminals | Female Straight Solder Connections | Female 90° Solder Connections | Female Straight Screw Terminals | Pins |
|-------|----------------|----------------------------------|-----------------------------|-------------------------------|------------------------------------|-------------------------------|---------------------------------|------|
| 3     | Ø 3.5 - 5.0 mm | RSMC                             | RSMCW                       | RSMCK                         | RKMC                               | RKMCW                         | RKMCK                           | 3    |
| 4     | Ø 3.5 - 5.0 mm | RSMC                             | RSMCW                       | RSMCK                         | RKMC                               | RKMCW                         | RKMCK                           | 4    |

**Table 15:** Part Number Configurations for Pico M8 Field Attachable Connectors

**EXAMPLE:** Field Attachable Connector

**RKMC 4** = Pico M8, Field Attachable Connector, Female Straight with Ø 3.5 - 5.0 mm Screw Joint.

**NOTE:** Areas without a part number identifier are considered to be a special order.

# Mouser Electronics

Authorized Distributor

Click to View Pricing, Inventory, Delivery & Lifecycle Information:

[Lumberg Automation:](#)

[RSMF 4/0.5 M](#)