



RSWF5-PCB | RKWF5-PCB

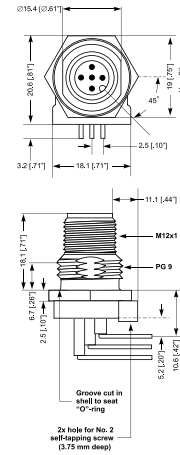


DeviceNet Receptacles, M12 PCB

5-Pole, Male

DeviceNet, 5-pole, male M12 receptacle, 90° PCB mount, PG9 panel cut-out.

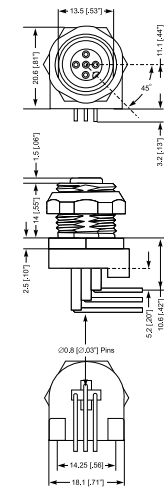
RSWF5-PCB



5-Pole, Female

DeviceNet, 5-pole, female M12 receptacle, 90° PCB mount, PG9 panel cut-out.

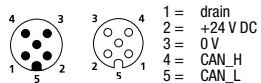
RKWF5-PCB



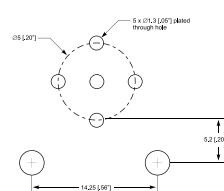
Pin Assignments

Face Views, M12

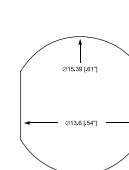
5 pole



Recommended PCB Pattern



Recommended Panel Cutout





Be Certain with Belden

DeviceNet Receptacles, M12 PCB
RSWF5-PCB | RKWF5-PCB

Technical Data

Environmental	
Degree of protection	IP 67 / NEMA 6P
Operating temperature range	-25°C (-13°F) / +90°C (+194°F)
Materials	
Contact	Solid, machined brass Gold over nickel plating per DN specifications
Insert	RSWF 5-PCB: Nylon, black RKWF 5-PCB: PUR, black
Shell	Brass, nickel plated
Coupling nut	Brass, nickel plated
Mechanical	
O-ring	viton
PCB mount	5-pin insertion with hole for 2 self-tapping screw in base
Electrical	
Current rating	4A
Voltage rating	250 V

Part Number		Pins	Characteristics
Male	Female		
RSWF5-PCB		5	
	RKWF5-PCB	5	

Mouser Electronics

Authorized Distributor

Click to View Pricing, Inventory, Delivery & Lifecycle Information:

[Lumberg Automation:](#)

[RKWF 5 PCB](#)