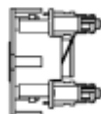


AX103260 Faceplates and Panels - HD Patch Panel - HD-Style



For more Information
please call

1-800-Belden1

**General Description:**

CAT5E HD-BIX Patch Panel, 24-port, 1U, Black

Usage (Overall)

Suitable Applications:	IBDN System 1200, TIA Category 5e, ISO Class D, 1000BASE-T, 100BASE-T
Related Parts:	CAT5E Modular Cords

Physical Characteristics (Connectivity)**Capacity**

Max. Capacity:	24 connectors (Patch Panel is already loaded)
-----------------------	---

Access

Front Connection:	Flush
Termination Area:	Rear

Dimensions**Dimensions:**

Height (mm)	Width (mm)	Depth (mm)
44.450	482.600	38.100

Materials**Materials:**

Description	Material
Panel	Steel

Color

Color:	Black
---------------	-------

Weight

Weight:	0.544 kg
----------------	----------

Included Parts

Included Parts:	4 Screws (10x32); 4 Screws (12x24); 1 Printable LabelFlex Half-Sheet; 1 Installation Guide.
------------------------	---

Packaging

Packaging:	Individually packaged in a cardboard box.
-------------------	---

Mechanical Characteristics (Connectivity)

Footprint/Type:	HDPP
Plug / Jack Compatibility:	RJ45

Termination Interface:

Termination	Connection	Durabilities
Front	Mated Connection	750 Cycles
Rear	IDC Connection	10 Insertions

Termination Characteristics:

Termination Characteristic
Universal T568A/B

Storage Temperature Range:	-40°C To +70°C
-----------------------------------	----------------

AX103260 Faceplates and Panels - HD Patch Panel - HD-Style

Installation Temperature Range:	-10°C To +60°C
Operating Temperature Range:	-10°C To +60°C
Tool Compatibility:	BIX Connecting Tool (A0270165)

Applicable Specifications and Agency Compliance (Overall)**Applicable Standards & Environmental Programs**

Other Standards:	FCC Part 68, Subpart F, IEC 60603-7
EU Directive 2002/95/EC (RoHS):	Yes
EU RoHS Compliance Date (mm/dd/yyyy):	07/01/2006
MII Order #39 (China RoHS):	EUP 50
Telecommunications Standards:	Category 5 - ISO/IEC 11801:2002 Ed.2
Safety Listing:	ACA, Bi-national Standard Listed

Suitability

Suitability - Indoor:	Yes
------------------------------	-----

Transmission Characteristics (Connectivity)**Mated Connection Table 1:**

Frequency (MHz)	Max. Insertion Loss TIA* (dB)	Max. Insertion Loss Belden** (dB)	Min. NEXT TIA* (dB)	Min. NEXT Belden** (dB)	Min. FEXT TIA* (dB)	Min. FEXT Belden** (dB)
1.000	0.100	0.100	65.000	77.000	65.000	67.000
4.000	0.100	0.100	65.000	73.000	63.100	65.000
8.000	0.100	0.100	64.900	66.900	57.000	58.900
10.000	0.100	0.100	63.000	65.000	55.100	57.000
16.000	0.100	0.100	58.900	60.900	51.000	52.900
20.000	0.100	0.100	57.000	59.000	49.100	51.000
25.000	0.100	0.100	55.000	57.000	47.100	49.000
31.250	0.110	0.100	53.100	55.100	45.200	47.100
62.500	0.160	0.120	47.100	49.100	39.200	41.100
100.000	0.200	0.160	43.000	45.000	35.100	37.000
160.000		0.210		40.900		32.900

Mated Connection Table - Footnote:

* TIA-EIA-568-B.2 Category 5e Standard. ** Worst-case performance for a CAT5E mated connection using CAT5E modular plugs.

Mated Connection Table 2:

Frequency (MHz)	Min. Return Loss TIA* (dB)	Min. Return Loss Belden** (dB)
1.000	30.000	32.000
4.000	30.000	32.000
8.000	30.000	32.000
10.000	30.000	32.000
16.000	30.000	32.000
20.000	30.000	32.000
25.000	30.000	32.000
31.250	30.000	32.000
62.500	24.100	32.000
100.000	20.000	28.000
160.000		23.900

Dielectric Strength:	1,000 V RMS @ 60Hz for 1 minute
Current Rating:	1.500 A
Insulation Resistance:	500 M-Ohm Minimum
Max. Contact Resistance:	20m-Ohm
Termination Resistance:	2.5 m-Ohm

AX103260 Faceplates and Panels - HD Patch Panel - HD-Style

Notes (Overall)

Notes: For proper installation refer to Installation Guide PX100796 included with the product or visit our web site at <http://www.belden.com>

Product Family**Part Numbers:**

Description	Item Number
HD-BIX PP CAT5E 1U24P, Black	AX103260
HD-BIX PP CAT5E 2U48P, Black	AX103261

Put Ups and Colors:

Item #	Putup	Ship Weight	Color	Notes	Item Desc
AX103260	1 EA	1.719 LB			CAT5E HD-BIX PATCH PANEL 24-P

Revision Number: 0 Revision Date: 09-19-2017

© 2020 Belden, Inc
All Rights Reserved.

Although Belden makes every reasonable effort to ensure their accuracy at the time of this publication, information and specifications described herein are subject to error or omission and to change without notice, and the listing of such information and specifications does not ensure product availability.

Belden provides the information and specifications herein on an "AS IS" basis, with no representations or warranties, whether express, statutory or implied. In no event will Belden be liable for any damages (including consequential, indirect, incidental, special, punitive, or exemplary damages) whatsoever, even if Belden has been advised of the possibility of such damages, whether in an action under contract, negligence or any other theory, arising out of or in connection with the use, or inability to use, the information or specifications described herein.

All sales of Belden products are subject to Belden's standard terms and conditions of sale.

Belden believes this product to be in compliance with EU RoHS (Directive 2002/95/EC, 27-Jan-2003). Material manufactured prior to the compliance date may be in stock at Belden facilities and in our Distributor's inventory. The information provided in this Product Disclosure, and the identification of materials listed as reportable or restricted within the Product Disclosure, is correct to the best of Belden's knowledge, information, and belief at the date of its publication. The information provided in this Product Disclosure is designed only as a general guide for the safe handling, storage, and any other operation of the product itself or the one that it becomes a part of. This Product Disclosure is not to be considered a warranty or quality specification. Regulatory information is for guidance purposes only. Product users are responsible for determining the applicability of legislation and regulations based on their individual usage of the product.

Mouser Electronics

Authorized Distributor

Click to View Pricing, Inventory, Delivery & Lifecycle Information:

[Belden Wire & Cable:](#)

[AX103260](#)