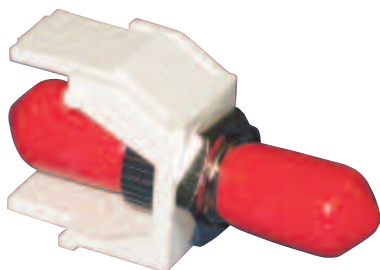


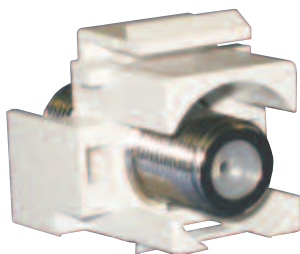
# DATA Sheet



AX102420 Keystone LC Duplex Module



AX102243 Keystone ST Compatible Module



AX102259 Keystone Video F Coaxial Module



AX102263 Keystone Blank Module

## Keystone Multimedia Modules

The Keystone Multimedia Modules are available in LC Duplex and ST-Compatible formats for fiber applications as well as in F coaxial connector for video applications.

The Keystone LC Duplex Modules are high-quality LC Duplex fiber adapters mounted in a keystone-style plastic housing. They are available in multimode, and singlemode for any fiber cabling applications.

The Keystone ST-Compatible Modules are using ceramic ferrules and are suitable for multimode and singlemode applications.

The Keystone Video F Coaxial Modules are using F coax bulkhead adapters and are suitable for video applications.

The Keystone Blank Modules are available in almond, white and black colors to fill unused ports in any keystone-style faceplate or adapter.

## Features & benefits

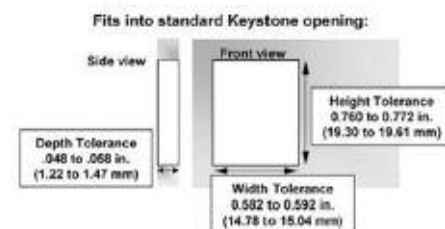
- > Multimode modules contain high-quality phosphor-bronze sleeve – provide low insertion loss and excellent durability
- > Singlemode modules contain high-quality ceramic sleeve – provide precise alignment and long term durability
- > All keystone-style modules can be easily snapped into keystone-style faceplates and adapters or in simple sheet metal cut-outs for installation in custom-built devices
- > Exceed TIA/EIA-568B, CENELEC and ISO/IEC 11801 performance requirements

## Applications

- > Multimedia Work Area Outlets
- > Telecom Room and Consolidation Point connections
- > Indoor use only

## Technical Specifications

- > Multimode LC module: beige adapter with phosphor bronze sleeve
- > Singlemode LC module: blue adapter with ceramic sleeve
- > ST-Compatible MM/SM: metal adapter with ceramic sleeve
- > Keystone-style module color: almond, white and black



# DATA Sheet

## Keystone Multimedia Modules

### Installation tips

- > Verify clearance space before inserting into mounting hardware
- > Label each port carefully for future reference and ease of administration
- > Angled faceplates are recommended for outlets using fiber connectors. If jacketed fiber cable is used inside the plates, connectors shall be on the bottom row

### Packaging

- > 10 units in a clear plastic bag

## Ordering Information

### Keystone LC Duplex Module

DETAIL	COLOR	ORDERING NUMBER
LC Duplex Multimode	Almond	AX102415
LC Duplex Multimode	White	AX102416
LC Duplex Multimode	Black	AX102417
LC Duplex Singlemode	Almond	AX102419
LC Duplex Singlemode	White	AX102420
LC Duplex Singlemode	Black	AX102421

### Keystone ST-Compatible Module

DETAIL	COLOR	ORDERING NUMBER
ST-Compatible Mutlimode/Singlemode	Almond	AX102242
ST-Compatible Mutlimode/Singlemode	White	AX102243
ST-Compatible Mutlimode/Singlemode	Black	AX102244

### Keystone Video F Coaxial Module

DETAIL	COLOR	ORDERING NUMBER
Coaxial Video F	Almond	AX102258
Coaxial Video F	White	AX102259
Coaxial Video F	Black	AX102260

### Keystone Blank Module

DETAIL	COLOR	ORDERING NUMBER
Blank	Almond	AX102261
Blank	White	AX102262
Blank	Black	AX102263

### For More Information

For any other product information call:  
1-800-BELDEN-1 or visit us at  
[www.Belden.com](http://www.Belden.com)

All information is subject to change without notice, since Belden reserves the right to change its products as progress in engineering and manufacturing methods or other circumstances may warrant.

# Mouser Electronics

Authorized Distributor

Click to View Pricing, Inventory, Delivery & Lifecycle Information:

[Belden Wire & Cable:](#)

[AX102416](#)