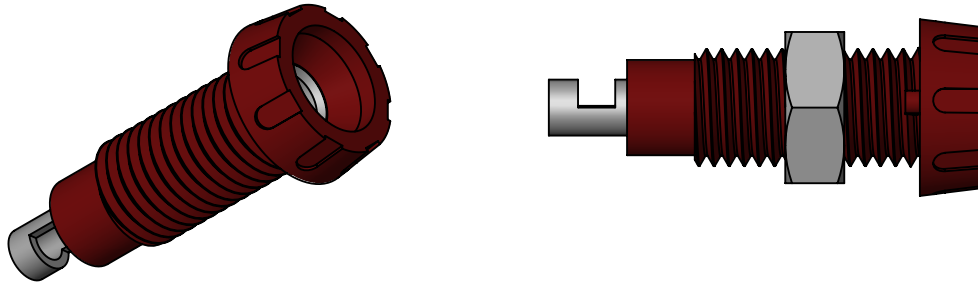
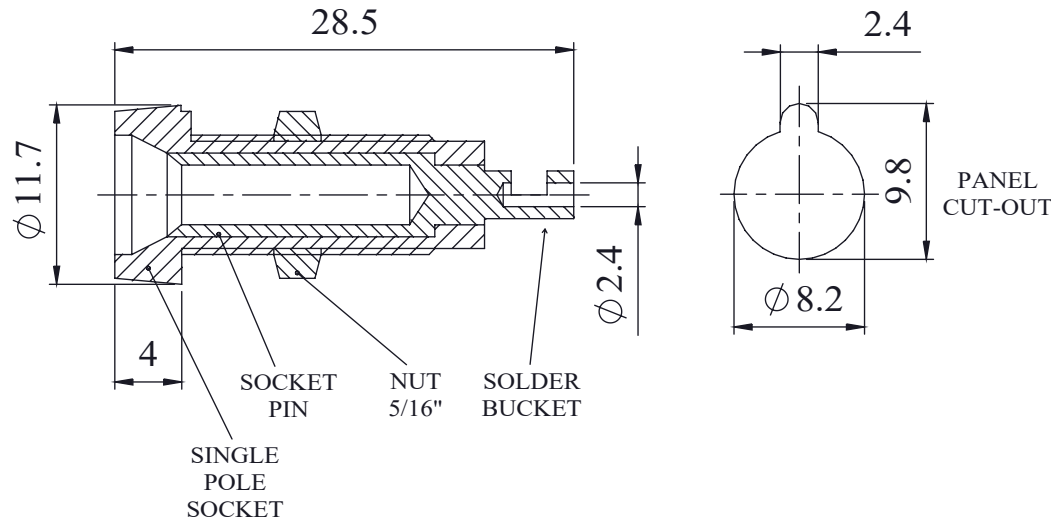


4mm PANEL SOCKET

RIGID PANEL MOUNTING SOCKET RETAINED IN PLACE BY A NUT,
ACCEPTS 4mm DIAMETER PLUGS. IS SUITABLE
FOR PANELS OF UP TO 13.5mm THICKNESS
CONNECTION IS VIA SOLDER BUCKET
(SOLDER TAG VERSION ALSO AVAILABLE REF 551 SERIES)



Dimensions



MATERIAL

BODY	POLYPROPYLENE
SOCKET	BRASS, SILVER PLATED
NUT	BRASS, NICKEL PLATED

ELECTRICAL

AMPS	10A
RATED VOLTAGE	50V
NOMINAL WORKING VOLTAGE	250V RMS
CONTACT RESISTANCE	10mΩ
TEMPERATURE	+147°C to -20°C
RECOMMENDED TEMPERATURE	10A @ 55°C
RECOMMENDED CONDUCTOR SIZE	1.5mm ²

MECHANICAL

RECOMMENDED TORQUE	0.4Nm MAX
RECOMMENDED PANEL THICKNESS	13.5mm MAX

PART NUMBER	COLOUR
563-0100	BLACK
563-0200	BLUE
563-0300	BROWN
563-0400	GREEN
563-0500	RED
563-0600	WHITE
563-0700	YELLOW

PROPRIETARY AND CONFIDENTIAL:

THE INFORMATION CONTAINED IN THIS DRAWING IS THE SOLE PROPERTY OF **ALPHA 3 MANUFACTURING**. ANY REPRODUCTION IN PART OR AS A WHOLE WITHOUT THE WRITTEN PERMISSION OF **ALPHA 3 MANUFACTURING** IS PROHIBITED.

DEM Manufacturing is a division of Alpha 3 Manufacturing LTD
DEM Manufacturing, Deltron Emcon House, Hargreaves Way,
Sawcliffe Ind. Park, Scunthorpe, North Lincolnshire, DN15 8RF, UK

UNLESS OTHERWISE SPECIFIED
DIMENSIONS ARE IN MILLIMETRES
LINEAR & RADIAL TOLERANCE:

NO DECIMAL PLACES:
1 DECIMAL PLACE: ±
2 DECIMAL PLACES: ±
ANGULAR TOLERANCE: ±

IF IN DOUBT ASK! DO NOT SCALE DRAWING!

FINISH	SEE NOTES
MATERIAL	SEE NOTES
THE FINISHED PRODUCT SHOULD BE CLEAN AND FREE FROM ALL LIQUIDS AND DEBRIS. SURFACES SHOULD BE OF UNIFORM APPEARANCE FREE FROM SHARP EDGES, BURRS AND CORROSION	

AUTHOR	SB
EDITOR	DT
APPROVER	PA
THIRD ANGLE PROJECTION	
SHEET 1 OF 1	
SCALE 1:1	A4

TITLE	GENERAL SPECIFICATION	
FILE	563 SERIES	
PART	4mm PANEL SOCKET WITH SOLDER BUCKET	
ISSUE/REV.	009	EDIT DATE 13/08/2020
RELEASED		RELEASE DATE 19/08/2020

Mouser Electronics

Authorized Distributor

Click to View Pricing, Inventory, Delivery & Lifecycle Information:

[Deltron:](#)

[563-0100](#)