

| REV | DATE | ECN NUMBER | ECN COMMENT | | | | | |
|-----|-------------|------------|--|--|--|--|--|--|
| 008 | 15 Mar 2018 | C03732 | ADD TORQUE SETTING MIN 0.5 nM- 1nM MAX | | | | | |

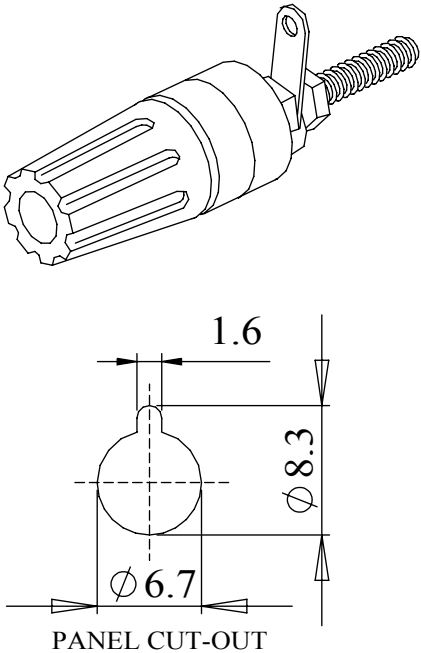
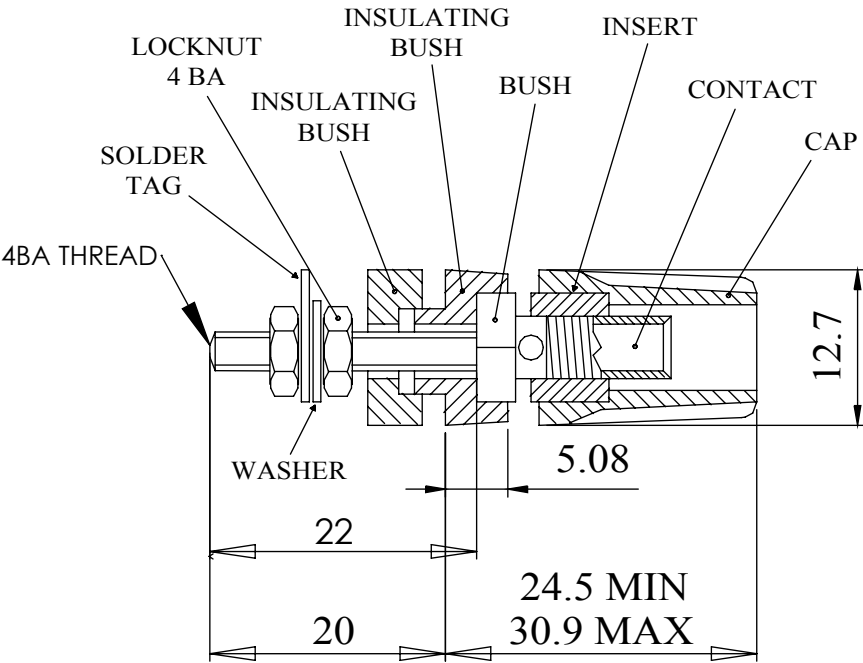
INSULATED BINDING POST WITH A 4mm SOCKET.
 PANEL INSULATING BUSHES WITH A LOCATION KEYWAY,
 THREADED TERMINATION SUPPLIED WITH SOLDER TAG WASHER
 AND LOCK NUTS.
 AVAILABLE IN 7 COLOUR VARIATIONS

| | |
|-------------------|-----------------------------|
| <u>MATERIAL:</u> | |
| CAP | :ACETAL |
| THREAD CONTACT | :BRASS, BRIGHT NICKEL PLATE |
| INSERT | :BRASS,BRIGHT NICKEL PLATE |
| BUSH | :BRASS BRIGHT NICKEL PLATE |
| INSULATING BUSHES | :ACETAL |
| LOCKNUT | :BRASS, BRIGHT NICKEL PLATE |
| WASHER | :BRASS, BRIGHT NICKEL PLATE |
| SOLDER TAG | :BRASS, FLASH SILVER PLATE |

| | |
|--------------------|----------|
| <u>ELECTRICAL:</u> | |
| CURRENT RATING | :16 AMPS |
| RATED VOLTAGE | : 50 V |

| | |
|--------------------|---------------------------|
| <u>MECHANICAL:</u> | |
| RECOMMENDED TORQUE | : MIN 0.5 nM - MAX 1.0 Nm |
| THREAD | :4BA (3.6mm OR 0.141inch) |
| PANEL THICKNESS | : 12.7mm (MAX) |

DIMENSIONS



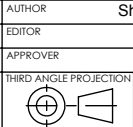
| COLOUR | PART NUMBER |
|--------|-------------|
| BLACK | 552-0100 |
| BLUE | 552-0200 |
| BROWN | 552-0300 |
| GREEN | 552-0400 |
| RED | 552-0500 |
| WHITE | 552-0600 |
| YELLOW | 552-0700 |



PROPRIETARY AND CONFIDENTIAL:
 THE INFORMATION CONTAINED IN THIS DRAWING IS THE SOLE PROPERTY OF ALPHA 3 MANUFACTURING. ANY REPRODUCTION IN PART OR AS A WHOLE WITHOUT THE WRITTEN PERMISSION OF ALPHA 3 MANUFACTURING IS PROHIBITED.
 DEM Manufacturing is a division of Alpha 3 Manufacturing LTD
 DEM Manufacturing, Deltron Emcon House, Hargreaves Way, Sawcliffe Ind. Park, Scunthorpe, North Lincolnshire, DN15 8RF, UK

UNLESS OTHERWISE SPECIFIED DIMENSIONS ARE IN MILLIMETRES
 LINEAR & RADIAL TOLERANCE:
NO DECIMAL PLACES ±0.2mm
1 DECIMAL PLACE ±0.1mm
2 DECIMAL PLACES ±0.05mm
ANGULAR TOLERANCE: ±1°

IF IN DOUBT ASK! DO NOT SCALE DRAWING!
 FINISH SEE NOTE
 MATERIAL SEE NOTE
 THE FINISHED PRODUCT SHOULD BE CLEAN AND FREE FROM ALL LIQUIDS AND DEBRIS. SURFACES SHOULD BE OF UNIFORM APPEARANCE FREE FROM SHARP EDGES, BURRS AND CORROSION



| | | | |
|------------------------|--------------|------------|-----------------------|
| AUTHOR | Shaun Barron | TITLE | GENERAL SPECIFICATION |
| EDITOR | DT | FILE | 552 SERIES |
| APPROVER | WC | PART | 552-0x00 |
| THIRD ANGLE PROJECTION | SHEET 1 OF 1 | ISSUE/REV. | 008 |
| SCALE 1:1 | A4 | RELEASED | VERSION 21 |
| | | EDIT DATE | 15 Mar 2018 |

Mouser Electronics

Authorized Distributor

Click to View Pricing, Inventory, Delivery & Lifecycle Information:

Deltron:

[552-0400 GRN](#) [552-0400](#) [552-0500](#)