

A range of professional chassis mounting sockets, designed for panel mounting via two flange fixing M3 screws. These sockets mate with all standard lockable plugs.

## Materials

Housing	Mazak
	Nickel Plated
Moulding	Lexan 500R
Contacts	Brass Silver Plated

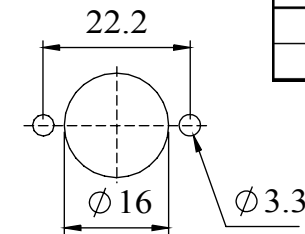
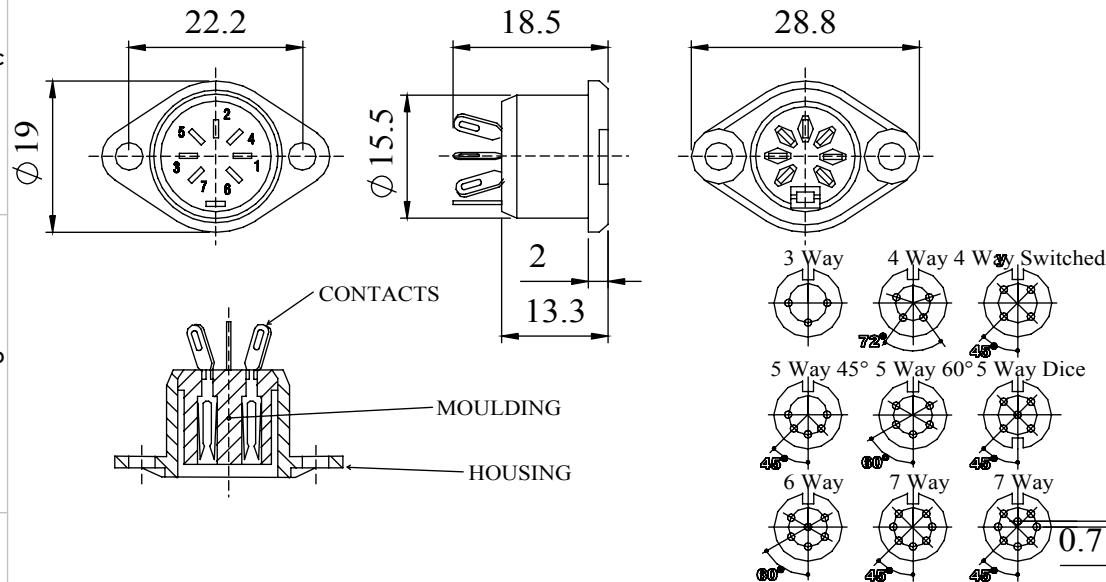
## Electrical

Rated Voltage	34 V a.c. or d.c.
Current Rating	2.A
Test Voltage	500 V r.m.s.
Insulation Resistance	103 MΩ min at 100 V d.c
Contact Resistance	10 mΩ max
Capacitance (mated)	3pF

## Climatic

Climatic category	25/070/21
Temperature Range	-25°C to +70°C
Damp heat, steady state	21 days

## Dimensions



PANEL CUTOUT

Type	Deltron No
3 Way	630-0300
4 Way	630-0400
4 Way Switched	630-0410
5 Way 45°	630-0500
5 Way 60°	630-0510
5 Way Dice	630-0520
6 Way	630-0600
7 Way	630-0700
8 Way	630-0800

RoHS  
2002/95/EC  
Compliant

Tel No. +44(0)1724 273200 Website [www.dem-uk.com](http://www.dem-uk.com)



PROPRIETARY AND CONFIDENTIAL  
THE INFORMATION CONTAINED IN THIS DRAWING IS THE SOLE PROPERTY OF  
ALPHA 3 MANUFACTURING.  
ANY REPRODUCTION IN PART OR AS A WHOLE WITHOUT THE WRITTEN PERMISSION OF  
ALPHA 3 MANUFACTURING IS PROHIBITED.

DEM Manufacturing, Deltron Emcon House  
Hargreaves Way, Sawcliffe Ind. Park,  
Scunthorpe, North Lincolnshire, DN15 8RF, UK

UNLESS OTHERWISE SPECIFIED:  
DIMENSIONS ARE IN MILLIMETRES  
LINEAR TOLERANCE:  
NO DECIMAL PLACES  $\pm 0.5\text{mm}$   
1 DECIMAL PLACE  $\pm 0.25\text{mm}$   
2 DECIMAL PLACES  $\pm 0.125\text{mm}$   
ANGULAR TOLERANCE:  $\pm 1^\circ$

FINISH PROFESSIONAL FLANGED CHASSIS SOCKET  
IF IN DOUBT ASK  
DO NOT SCALE DRAWING  
MATERIAL SEE NOTE

DEBURR AND BREAK SHARP EDGES

DRAWN BY SPB  
APPROVED BY WC  
THIRD ANGLE PROJECTION

SHEET 1 OF 1  
SCALE 1:1  
A4

TITLE GENERAL SPECIFICATION  
630 SERIES  
CHASSIS SOCKET  
DRAWING NO. 630 SERIES  
ISSUE 09  
Release

# Mouser Electronics

Authorized Distributor

Click to View Pricing, Inventory, Delivery & Lifecycle Information:

[Deltron:](#)

[630-0600](#)