

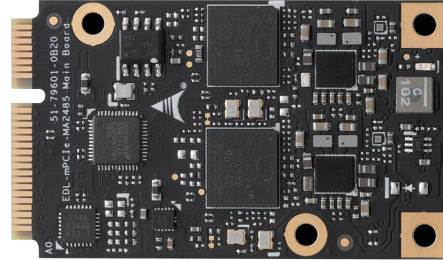
# EDL-mPCIe-MA2485

*Single/Dual Intel® Movidius™ Myriad™ X MA2485 embedded VPU module*

## Features

- PCIe mini-card form factor (30 x 50 mm)
- 1x/2x Intel® Movidius™ Myriad™ X VPU MA2485 with on-chip memory
- Support for Intel's OpenVINO™ toolkit
- Operating Temperature -20° C to 70°C

Preliminary



## Introduction

The EDL-mPCIe-MA2485 PCIe mini-card features Intel® Movidius™ Myriad™ X VPU, providing an easy and flexible solution for computer vision and deep learning acceleration. Able to solve complex AI hardware design challenges, it enables integration of vision-based accelerators and inference engines to implement deep learning solutions at the edge.

The EDL-mPCIe-MA2485 is available with single or dual onboard Intel® Movidius™ Myriad™ X VPUs with integrated LPDDR3 memory

to meet all levels of performance requirements. The module is powered by the 3.3V mini PCIe connector from the host system with PCIe interface. It supports Intel's OpenVINO™ toolkit which allows developers to leverage widely-used development standards.

## Ordering Information

- **EDL-mPCIe-MA2485**  
Dual Intel® Movidius™ Myriad™ X MA2485 embedded VPU module

## Specifications

	EDL-mPCIe-MA2485
CPU	Single/Dual Intel® Movidius™ Myriad™ X MA2485
Boot Image Device	USB
Form Factor	PCIe mini-card
Interface	PCIe x1
Memory	Integrated memory LPDDR3 4GB
Power	2 x PMIC (MAX77620)
PCIe Bridge	1x ASMedia® PCIe to USB3.0 (ASM1042A)
IO Expander	F75114
RTC	1 x RTC connector
Status LED	1 x Green (3.3V)
Debug Port	2x 12-pin JTAG Connectors
Operating Temp.	-20°C to +70°C (TBD)
Power Consumption	TBD
Software Support	Intel® OpenVINO™ toolkit
Certification	CE & RoHS Compliance

# Mouser Electronics

Authorized Distributor

Click to View Pricing, Inventory, Delivery & Lifecycle Information:

[ADLINK Technology:](#)

[HTS-A-EDL-mPCIe-MA2485](#)