

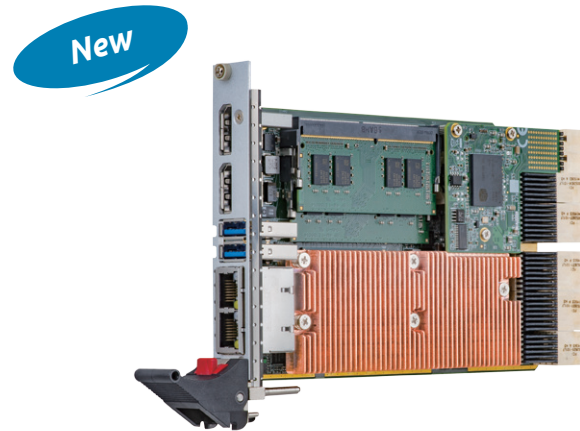
# cPCI-A3525 Series

## 3U CompactPCI Serial 9th Gen Intel® Xeon®/Core™ i7 Processor Blade

### Features

- PICMG® CPCI-5.0 CompactPCI® Serial Processor Blade
- 14nm multi-core 9th Gen Intel® processor, (formerly Coffee Lake Refresh)
- Max. 32GB DDR4-2666 by 2x SODIMM
- Supports 2x PCIe x8 Gen 3 and 2x PCIe x4 Gen 3
- Up to 10x USB 2.0/3.0, up to 7x SATA to rear

**CompactPCI®  
Serial**



### Specifications

#### • Processor & System

##### CPU

Intel® Xeon® E-2276ML 2.8/4.7GHz, 6C/12T, 12M Cache, 45W  
 9th Gen Intel® Core™ i7-9850HL 6C/12T, 25W  
 9th Gen Intel® Core™ i7-9850HE 6C/12T, 45W/35W

##### Chipset

Intel® CM246 Chipset

##### Memory

DDR4-2666 dual bank SODIMM memory, up to 32GB  
 Supports ECC memory (dependent on processor)

##### BIOS

AMI UEFI BIOS, dual 128Mb SPI flash memory

##### BMC

Supports ADLINK SEMA 4.0

##### PICMG Standards

CompactPCI® Serial Rev 2.0

#### • Front Panel Connectivity

##### Graphics

2x dual-mode DisplayPort via Intel processor internal graphics engine

##### Ethernet

2x 1G BASE-T via RJ-45  
 1x Intel® Ethernet Connection I219-LM, 1x Intel® Ethernet Controller I210-AT

##### USB

2x USB 3.0 connectors

#### • Rear I/O

##### PCIe

1x PCIe x8 Gen3 via P1 & P2  
 1x PCIe x8 Gen3 via P2  
 1x PCIe x2 Gen3 via P4  
 2x PCIe x4 Gen3 via P5

##### SATA

Max. 7x SATA to rear

##### USB

2x USB 3.0 + 8x USB 2.0

##### Ethernet

Optional 2x Ethernet ports by 2x PCIe x1, via adapter board (DB-P620)

#### • Storage

##### Onboard

Optional 1x onboard SSD, up to 128GB via adapter board (DB-P620)

#### • Operating System

Windows 10  
 Linux  
 Other OS upon request  
 (Please contact your ADLINK representative)

## Specifications

### • Miscellaneous

#### LED

- 1x Power status LED
- 1x SATA status LED
- 1x WDT status LED, controlled by BMC
- 1x Overtemp LED
- 1x General purpose LED, controlled by BMC

#### Watdog Timer

System Reset and NMI, with programmable interval, 1-65535 sec or 1-65535 minutes

#### Hardware Monitor

Monitors CPU temperature, system temperature and DC voltages by SEMA

#### TPM

Support via adapter board

#### Battery

Coin cell battery for RTC TBD

### • Mechanical & Environmental

#### Form Factor

3U 4HP 1-slot CompactPCI Serial blade  
160mm x 100mm (LxW)  
Equipped with P1, P2, P3, P4, P5  
P6 supported by optional daughter board

#### Operating Temp.

Operating temperature: 0°C to 60°C

#### Storage Temp.

-40°C to +85°C

#### Relative Humidity

95% non-condensing

#### Shock

20G peak-to-peak, 11ms duration, operating

#### Vibration

2Grms random vibration, 5 to 500Hz in 3 axes, operating

### • Safety & EMI

#### Certifications

CE/FCC

# cPCI-A3525 Series

## I/O Table

		Display	GbE	USB 2.0	USB 3.0	PCIe	SSD	SATA
		SBC						
cPCI-A3525 (4HP)	Faceplate	2 (DP)	2		2			
	Onboard						1 <sup>(1)</sup> (optional)	
	Rear		2 (optional)	8	2	2x PCIe x8 2x PCIe x4 1x PCIe x2		7

(1) Available with SSD daughter board.

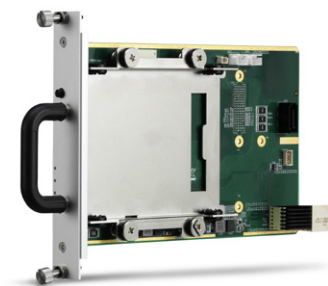
## Ordering Information

- **cPCI-A3525/9850/M16/S128**  
1-slot (4HP) 3U CompactPCI Serial blade with Intel® Core™ i7-9850HL processor and 2x 8GB DDR4-2666 SODIMM, 2x DP, 2x GbE, 2x USB 3.0 and onboard 128GB SSD
- **cPCI-A3525/9850/M16**  
1-slot (4HP) 3U CompactPCI Serial blade with Intel® Core™ i7-9850HL processor and 2x 8GB DDR4-2666 SODIMM, 2x DP, 2x GbE and 2x USB 3.0
- **cPCI-A3525/2276/M16/S128**  
1-slot (4HP) 3U CompactPCI Serial blade with Intel® Xeon® E-2276ML processor and 2x 8GB DDR4-2666 SODIMM, 2x DP, 2x GbE, 2x USB 3.0 and onboard 128GB SSD
- **cPCI-A3525/2276/M16**  
1-slot (4HP) 3U CompactPCI Serial blade with Intel® Xeon® E-2276ML processor and 2x 8GB DDR4-2666 SODIMM, 2x DP, 2x GbE and 2x USB 3.0

## Accessories

- **DP-DVI cable**  
DisplayPort to DVI adapter cable
- **DP-VGA cable**  
DisplayPort to VGA adapter cable
- **DP-HDMI cable**  
DisplayPort to HDMI adapter cable
- **cPCI-A3H10**  
3U CompactPCI Serial 2.5" SATA storage carrier with hot-swap support, anti-shock and anti-vibration storage kit
- **cPCI-A3X10**  
3U CompactPCI Serial XMC module carrier

Contact us for different CPU, memory, SSD/HDD and mSATA combinations.



cPCI-A3H10



cPCI-A3X10

# Mouser Electronics

Authorized Distributor

Click to View Pricing, Inventory, Delivery & Lifecycle Information:

[ADLINK Technology:](#)

[cPCI-A3525/9850HE/M16/S128](#) [cPCI-A3525/9850HL/M16/S128](#)