

gen4-BEZEL Family

---

# DATASHEET

DOCUMENT DATE: 14<sup>th</sup> December 2020  
DOCUMENT REVISION: 1.3



gen4-BEZEL-24B / gen4-BEZEL-24W  
gen4-BEZEL-28B / gen4-BEZEL-28W  
gen4-BEZEL-32B / gen4-BEZEL-32W  
gen4-BEZEL-35B / gen4-BEZEL-35W  
gen4-BEZEL-43B / gen4-BEZEL-43W  
gen4-BEZEL-50B / gen4-BEZEL-50W  
gen4-BEZEL-70B / gen4-BEZEL-70W

Uncontrolled Copy when printed or downloaded.  
Please refer to the 4D Systems website for the latest  
Revision of this document

Table of Contents

1. Description ..... 3

2. Features ..... 3

3. Assembly of the gen4 Display Module onto the Bezel and on to the Panel..... 4

4. Mechanical Dimensions ..... 6

5. Legal Notice ..... 8

6. Contact Information ..... 8

## 1. Description

These bezels are plastic surrounds for all gen4 display modules which feature Resistive Touch.

These bezels provide a sleek cover to the gen4 display modules, and provide an easy method to panel mount the display modules into an enclosure. The bezel mounts the display module, while also providing a mounting solution into a panel, keeping all securely together.

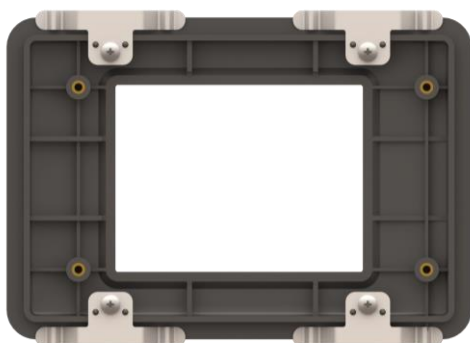
Spring clips attach to the bezel in multiple locations, and hold it tightly to the enclosure/wall panel, offering a range of panel thickness from 1mm to 3.0mm without the need to add washers. If a panel thicker than 3.0mm is required, washers with longer screws could be placed between the spring clip and the bezel, however this is not recommended practice.

Please Note, **this bezel is designed for indoor use only**. It is not weather tight, nor does it offer any IP rating. It should only be used indoors in clean environments as it offers little protection to the circuitry of moisture or particles.

Bezels are available in Black only as standard, however can be ordered in White on special request, subject to MOQ's. Please contact Sales.



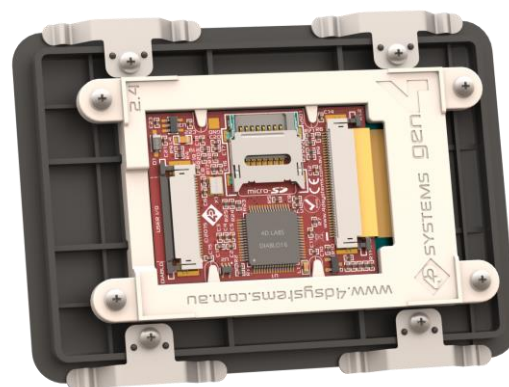
Bare 2.4" Bezel with clips attached - Front



Bare 2.4" Bezel with clips attached - Back

## 2. Features

- Plastic Bezel designed for panel mounting the gen4 range of resistive touch Display Modules
- Simple cut-out required, no mounting holes requires to be drilled in the panel
- Brass mounting inserts in the rear of the bezel, provide secure fixing points using the included screws
- 4 to 6 Spring Clips for attaching the bezel to the panel (Quantity and clip size depending on size of Bezel)
- 8 to 16 M2 mounting screws included (Quantity depending on size of Bezel), for attaching the gen4 display to the bezel, and attaching the spring clips to the bezel.



gen4-uLCD-24DT Mounted in 2.4" Bezel - Back



gen4-uLCD-24DT Mounted in 2.4" Bezel - Front

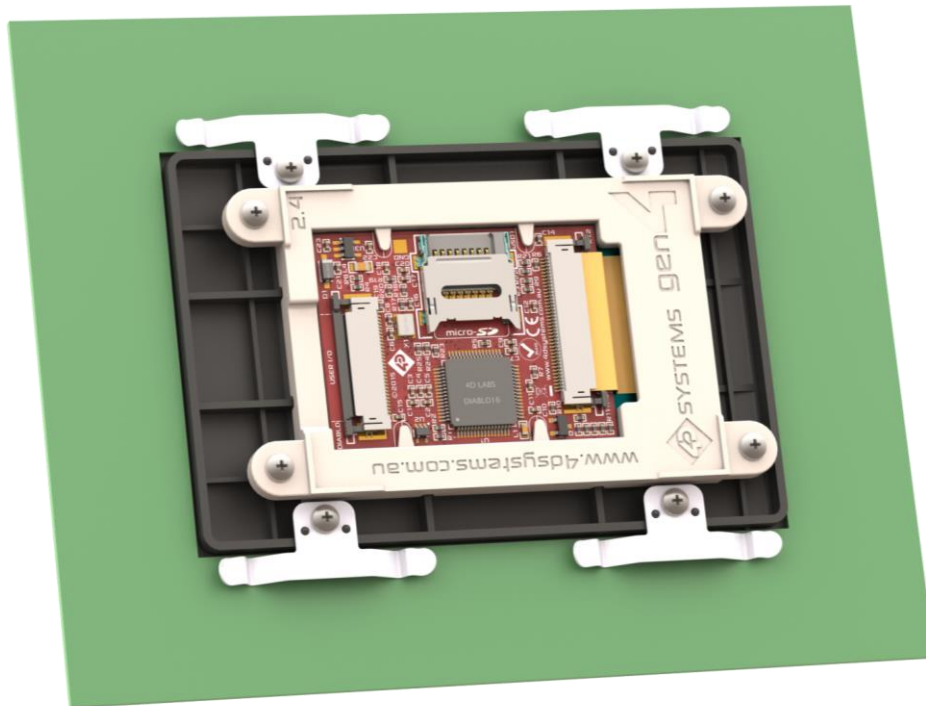


- Small and Large Spring Clips + Screws

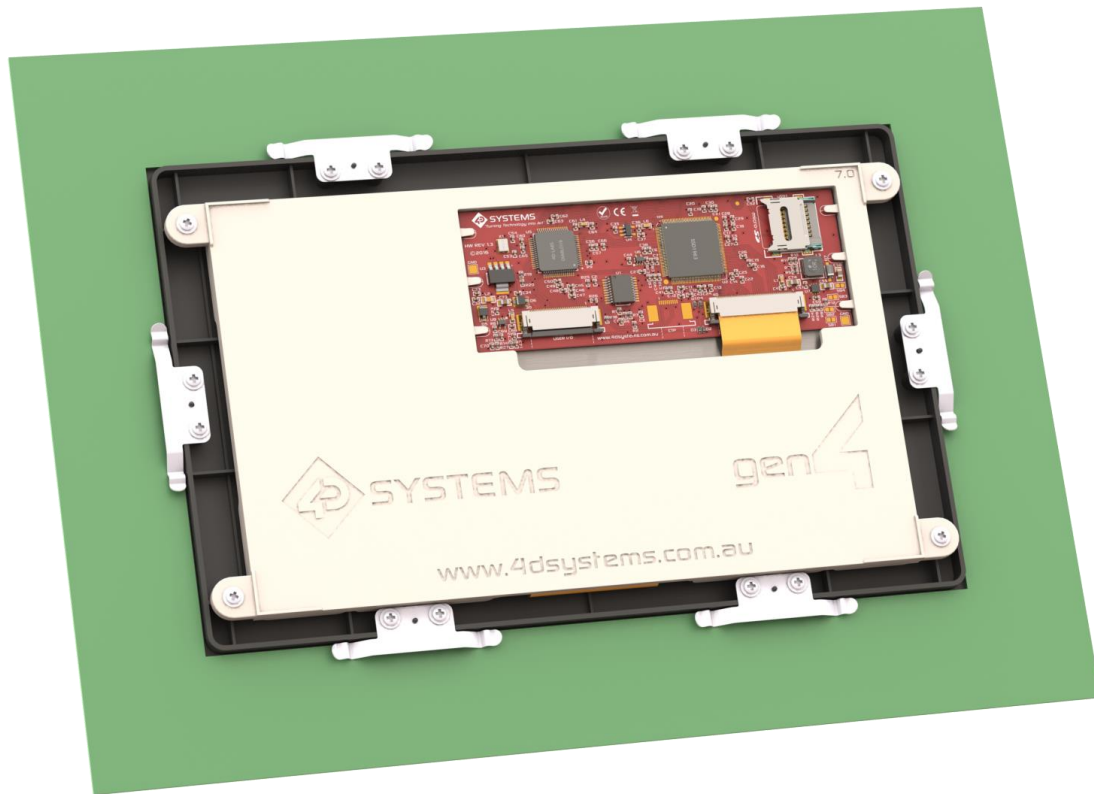
### 3. Assembly of the gen4 Display Module onto the Bezel and on to the Panel

- 1) Place the gen4 display module face down into the bezel, taking care of the orientation of the display so the active area of the display is visible through the viewing hole on the front of the bezel. It will be obvious as to the correct orientation, as part of the display will be obstructed if it is backwards.
- 2) Insert 4 of the screws into the mounting tabs of the gen4 display module, to secure the display module on the bezel. Nip the screws up but take care not to over tighten or damage may be done to the bezel.
- 3) Place the assembled bezel into the Panel/Enclosure which you have already cut the required hole out to suit, taking note of the orientation of the display based on how you have programmed your display module. Orientation of the graphic output can be changed from inside the Workshop4 IDE also.
- 4) Place one of the mounting screws through a hole in the spring clip, and line it up with the mounting pegs on the bezel and the screw hole. Screw the mounting clip down onto the bezel, allowing the spring clip to work against the panel, holding the bezel firmly in place. Be sure not to over tighten.
- 5) Repeat for the remaining screws.
- 6) The bezel should now be securely fitted to the panel, and the gen4 Display Module should be securely fitted to the bezel.

**NOTE:** It is possible to change the order of mounting, and mount the bezel into the panel first, and mount the display module second. This is not a problem.

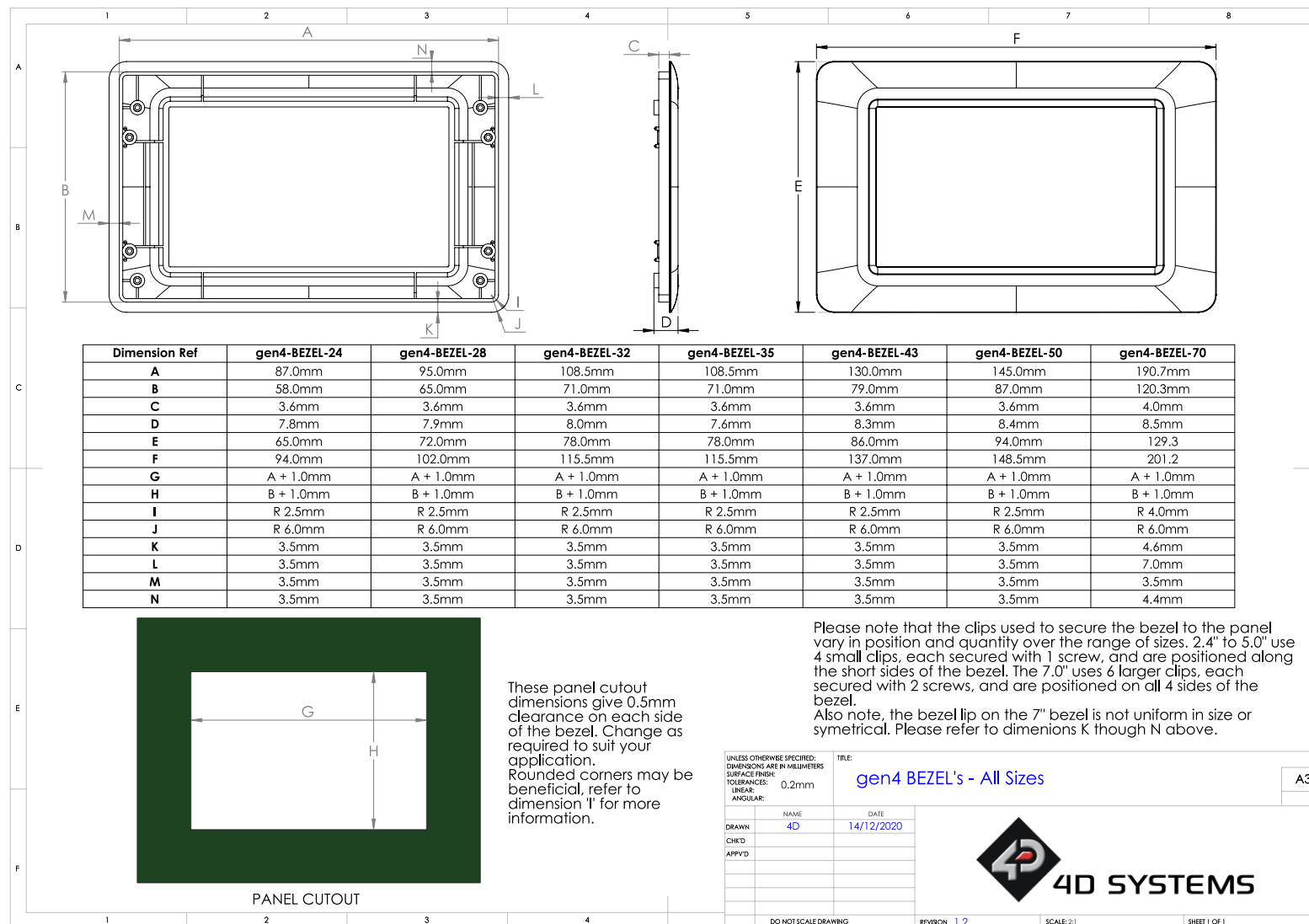


**Gen4-uLCD-24DT secured to the 2.4" Bezel, and Bezel secured to the Panel/Enclosure using the supplied small spring clips and screws**



**Gen4-uLCD-70DT secured to the 7.0" Bezel, and Bezel secured to the Panel/Enclosure using the supplied large spring clips and screws**

## 4. Mechanical Dimensions



**ORDERING INFORMATION****Order Code:**

Gen4-BEZEL-24B (Black Version)

Gen4-BEZEL-24W (White Version) – Special Order only – Subject to MOQ – Please contact Sales

Gen4-BEZEL-28B (Black Version)

Gen4-BEZEL-28W (White Version) – Special Order only – Subject to MOQ – Please contact Sales

Gen4-BEZEL-32B (Black Version)

Gen4-BEZEL-32W (White Version) – Special Order only – Subject to MOQ – Please contact Sales

Gen4-BEZEL-35B (Black Version)

Gen4-BEZEL-35W (White Version) – Special Order only – Subject to MOQ – Please contact Sales

Gen4-BEZEL-43B (Black Version)

Gen4-BEZEL-43W (White Version) – Special Order only – Subject to MOQ – Please contact Sales

Gen4-BEZEL-50B (Black Version)

Gen4-BEZEL-50W (White Version) – Special Order only – Subject to MOQ – Please contact Sales

Gen4-BEZEL-70B (Black Version)

Gen4-BEZEL-70W (White Version) – Special Order only – Subject to MOQ – Please contact Sales

**Packaging:** Module sealed in antistatic foam padded 4D Systems Box

## 5. Legal Notice

### Proprietary Information

The information contained in this document is the property of 4D Systems Pty. Ltd. and may be the subject of patents pending or granted, and must not be copied or disclosed without prior written permission.

4D Systems endeavours to ensure that the information in this document is correct and fairly stated but does not accept liability for any error or omission. The development of 4D Systems products and services is continuous and published information may not be up to date. It is important to check the current position with 4D Systems. 4D Systems reserves the right to modify, update or make changes to Specifications or written material without prior notice at any time.

All trademarks belong to their respective owners and are recognised and acknowledged.

### Disclaimer of Warranties & Limitation of Liability

4D Systems makes no warranty, either expressed or implied with respect to any product, and specifically disclaims all other warranties, including, without limitation, warranties for merchantability, non-infringement and fitness for any particular purpose.

Information contained in this publication regarding device applications and the like is provided only for your convenience and may be superseded by updates. It is your responsibility to ensure that your application meets with your specifications.

Images and graphics used throughout this document are for illustrative purposes only. All images and graphics used are possible to be displayed on the 4D Systems range of products, however the quality may vary.

In no event shall 4D Systems be liable to the buyer or to any third party for any indirect, incidental, special, consequential, punitive or exemplary damages (including without limitation lost profits, lost savings, or loss of business opportunity) arising out of or relating to any product or service provided or to be provided by 4D Systems, or the use or inability to use the same, even if 4D Systems has been advised of the possibility of such damages.

4D Systems products are not fault tolerant nor designed, manufactured or intended for use or resale as on line control equipment in hazardous environments requiring fail – safe performance, such as in the operation of nuclear facilities, aircraft navigation or communication systems, air traffic control, direct life support machines or weapons systems in which the failure of the product could lead directly to death, personal injury or severe physical or environmental damage ('High Risk Activities'). 4D Systems and its suppliers specifically disclaim any expressed or implied warranty of fitness for High Risk Activities.

Use of 4D Systems' products and devices in 'High Risk Activities' and in any other application is entirely at the buyer's risk, and the buyer agrees to defend, indemnify and hold harmless 4D Systems from any and all damages, claims, suits, or expenses resulting from such use. No licenses are conveyed, implicitly or otherwise, under any 4D Systems intellectual property rights.

## 6. Contact Information

For Technical Support: [www.4dsystems.com.au/support](http://www.4dsystems.com.au/support)

For Sales Support: [sales@4dsystems.com.au](mailto:sales@4dsystems.com.au)

Website: [www.4dsystems.com.au](http://www.4dsystems.com.au)



# Mouser Electronics

Authorized Distributor

Click to View Pricing, Inventory, Delivery & Lifecycle Information:

## 4D Systems:

[gen4-BEZEL-28B](#) [gen4-BEZEL-70B](#) [gen4-BEZEL-32B](#) [gen4-BEZEL-43B](#) [gen4-BEZEL-24B](#) [gen4-BEZEL-35B](#)  
[gen4-BEZEL-50B](#)