



4D SYSTEMS
TURNING TECHNOLOGY INTO ART

4D Development Board

4DevBoard

DATASHEET

Document Date: 5th September 2012
Document Revision: 1.0

Contents

| | |
|--|-----------|
| 1. Description..... | 3 |
| 2. Features | 3 |
| 3. Hardware Description | 4 |
| 3.1. μ OLED-96-G2 and μ LCD-144-G2 Modules | 4 |
| 3.2. μ OLED-128-G2 and μ OLED-160-G2 Modules | 5 |
| 3.3. μ LCD-24PTU, μ LCD-28PTU, μ LCD-32PTU and μ LCD-32WPTU microLCD Modules | 6 |
| 3.4. Speaker – Sound and Music Generation | 7 |
| 3.5. Joystick – 5 Position Multi Switch | 7 |
| 3.6. Power Supply | 7 |
| 3.7. Circuit Prototyping | 8 |
| 3.8. User LED's..... | 8 |
| 3.9. Jumper Settings..... | 8 |
| 4. Related Products..... | 9 |
| 5. Schematic Design | 10 |
| 6. Mechanical Drawing..... | 11 |
| 7. Specifications and Ratings..... | 12 |
| 8. Legal Notice | 13 |
| 9. Contact Information..... | 13 |

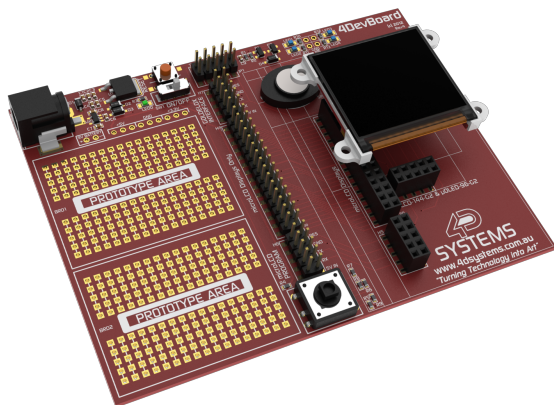
1. Description

The 4D Systems Development Board (4DevBoard) is an all-in-one development platform for a majority of the 4D Systems μ OLED and μ LCD modules. The feature packed board makes an ideal platform for learning and experimenting with the display modules as well as the 4D Systems Workshop 4 software and programming environments.

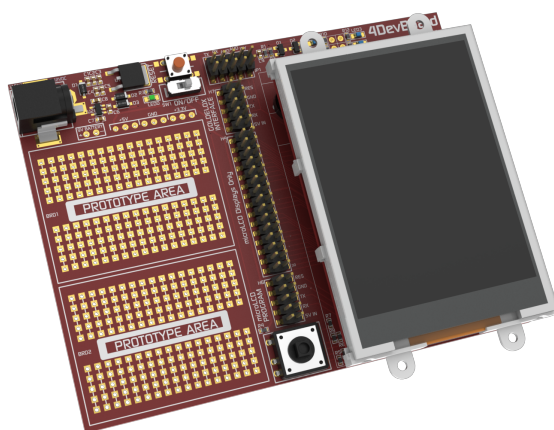
The 4DevBoard is currently compatible with the following modules:

- μ OLED-96-G2
- μ OLED-128-G2
- μ OLED-160-G2
- μ LCD-144-G2
- μ LCD-24PTU
- μ LCD-28PTU
- μ LCD-32PTU
- μ LCD-32WPTU

Note: As new modules are developed by 4D Systems, they may be compatible with the 4DevBoard, however this cannot be guaranteed.



μ OLED-128-G2 connected to the 4DevBoard



μ LCD-32PTU connected to the 4DevBoard

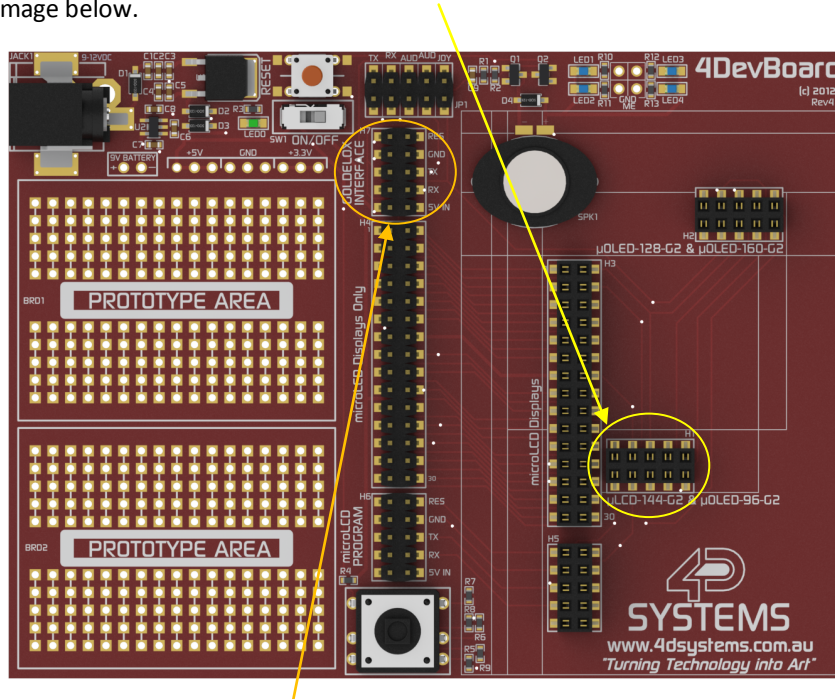
2. Features

- On-board DC-Jack (2.5mm centre positive) for wall plug adaptor (9V to 12V DC) with built in switch for automatic battery cut-off to prevent dual connection.
- PCB connections for a 9.0 Volt battery flying lead connector (not included).
- On-board input voltage to 5.0V regulator that can supply up to 1A of current for the display modules and users circuits.
- On-board 3.3 Volt regulator that can supply up to 150mA of current for the users circuits.
- Power Switch and LED indicator.
- 8 Ohms micro speaker with Darlington drive for sound and music.
- Push-button RESET switch.
- 2 x 5-pin male header for programming and interfacing to the users Goldelox Module (μ OLED's and μ LCD-144-G2) plugged into the 4DevBoard.
- 2 x 5-pin male header for programming the users microLCD Module (μ LCD-24PTU/28PTU/32PTU/32WPTU) plugged into the 4DevBoard, along with a 2 x 15-pin male header for interfacing with the users microLCD Module.
- 10-pin female header for μ OLED-128-G2 and μ OLED-160-G2 modules.
- 10-pin female header for μ OLED-96-G2 and μ LCD-144-G2 modules.
- 10-pin and 30-pin female headers for μ LCD-24PTU/28PTU/32PTU/32WPTU modules.
- 5 position multi-way switch Joystick.
- 10-pin male jumper header for configuration of the 4DevBoard Serial, Audio and Joystick connection.
- 4x User controllable LED's ready to be connected to the users circuit.
- 2x 170 tier solder-less breadboard for quick circuit prototyping (provided separately for user to attach to the 4DevBoard if desired).
- Set of 40 pieces (8 sets of 5 each) of colour coded pluggable jumper-wires. 5 pieces each of following lengths: 2, 5, 10, 15, 20, 25, 50 and 75 mm.
- RoHS Compliant
- Dimensions: 120mm x 90mm x 12.7mm

3. Hardware Description

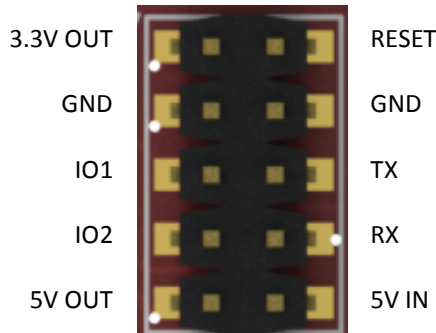
3.1. μ OLED-96-G2 and μ LCD-144-G2 Modules

The μ OLED-96-G2 and μ LCD-144-G2 modules connect to the 4DevBoard on the lower 10-pin female header, as depicted in the image below.



When the display module is attached to the 4DevBoard, the pins of the module are replicated on the upper 10-pin male header.

The pin configuration of this 10-pin male header is as follows:



Note: rather than the display module generating voltage for the 3.3V OUT pin, the 3.3V available on this header comes from the on-board voltage regulator of the 4DevBoard, which can provide a higher current.

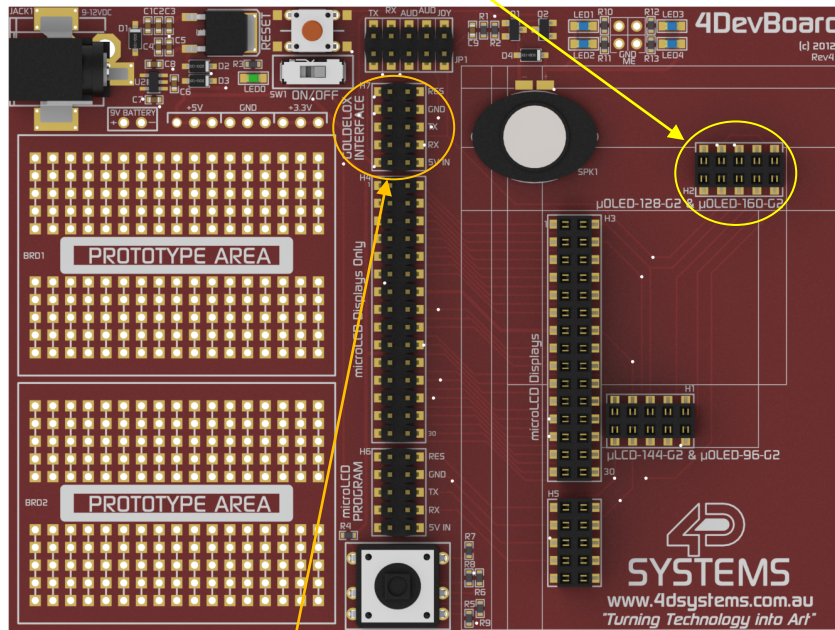
To program the display module, connect your 4D Programming Cable to the right hand side of this 10-pin male header, ensuring you have the cable the correct way around.

Note: Failure to connect the module in the correct orientation or if an offset on the pins is made when plugging the module it, may result in a short circuit and damage your display module. Please ensure that the 4DevBoard is disconnected from power when connecting your display module.

For further information on how to program your display module, please refer to the individual datasheet for the display module in question, available from the 4D Systems website, www.4dsystems.com.au

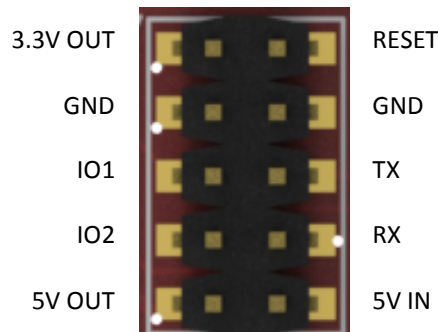
3.2. μ OLED-128-G2 and μ OLED-160-G2 Modules

The μ OLED-128-G2 and μ LCD-160-G2 modules connect to the 4DevBoard on the upper 10-pin female header, as depicted in the image below.



When the display module is attached to the 4DevBoard, the pins of the module are replicated on the upper 10-pin male header.

The pin configuration of this 10-pin male header is as follows:



Note: rather than the display module generating voltage for the 3.3V OUT pin, the 3.3V available on this header comes from the on-board voltage regulator of the 4DevBoard, which can provide a higher current.

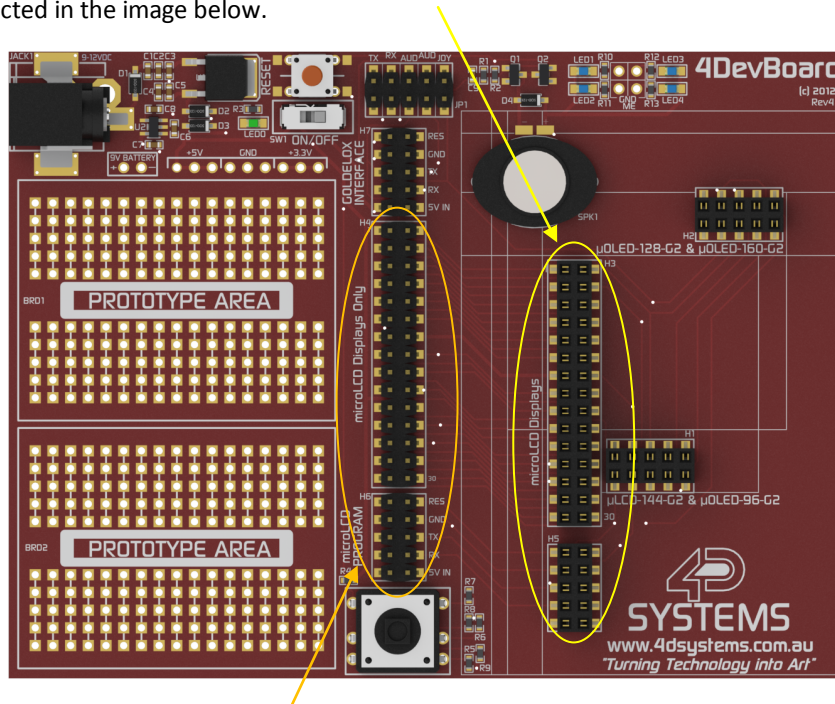
To program the display module, connect your 4D Programming Cable to the right hand side of this 10-pin male header, ensuring you have the cable the correct way around.

Note: Failure to connect the module in the correct orientation or if an offset on the pins is made when plugging the module it, may result in a short circuit and damage your display module. Please ensure that the 4DevBoard is disconnected from power when connecting your display module.

For further information on how to program your display module, please refer to the individual datasheet for the display module in question, available from the 4D Systems website, www.4dsystems.com.au



3.3. μ LCD-24PTU, μ LCD-28PTU, μ LCD-32PTU and μ LCD-32WPTU microLCD Modules

The μ LCD-24/28/32/32WPTU modules connect to the 4DevBoard on the 10-pin and 30-pin vertical female headers, as depicted in the image below.



When the display module is attached to the 4DevBoard, the pins of the module are replicated on the lower 10-pin and 30-pin male headers.

The pin configuration of this 10-pin male header is as follows:

| | | | | | |
|----------|---|-------|-----|---|----------|
| 3.3V OUT |  | RESET | IO1 |  | SPK- |
| GND | | GND | IO2 | | SPK+ |
| IO1 | | TX | IO3 | | I2C_SCL |
| IO2 | | RX | IO4 | | I2C_SDA |
| 5V OUT | | 5V IN | IO5 | | INO |
| | | | GND | | IN1 |
| | | | GND | | 5V OUT |
| | | | PA7 | | AUDIO_IO |
| | | | PA6 | | AUDENB |
| | | | PA5 | | RESET |
| | | | PA4 | | 3.3V OUT |
| | | | PA3 | | RX0 |
| | | | PA2 | | TX0 |
| | | | PA1 | | TX1 |
| | | | PA0 | | RX1 |

Note: rather than the display module generating voltage for the 3.3V OUT pin, the 3.3V available on this header comes from the on-board voltage regulator of the 4DevBoard, which can provide a higher current.

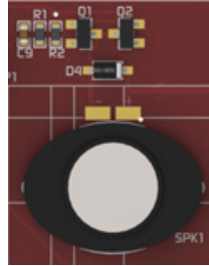
To program the display module, connect your 4D Programming Cable to the right hand side of this 10-pin male header, ensuring you have the cable the correct way around.

Note: Failure to connect the module in the correct orientation or if an offset on the pins is made when plugging the module it, may result in a short circuit and damage your display module. Please ensure that the 4DevBoard is disconnected from power when connecting your display module.

For further information on how to program your display module, please refer to the individual datasheet for the display module in question, available from the 4D Systems website, www.4dsystems.com.au

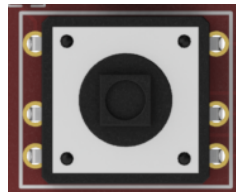
3.4. Speaker – Sound and Music Generation

The μ OLED-96/128/160-G2 μ OLED display modules and μ LCD-144-G2, μ LCD-24/28/32/32WPTU μ LCD display modules are capable of generating complex sounds and music from their respective I/O pins. Using a shunt and shorting the relevant AUD pin on the Jumper Header (refer to section 3.9 for further information), audio generation is possible from any of the Display Modules and played out of the on-board speaker on the Development Board.



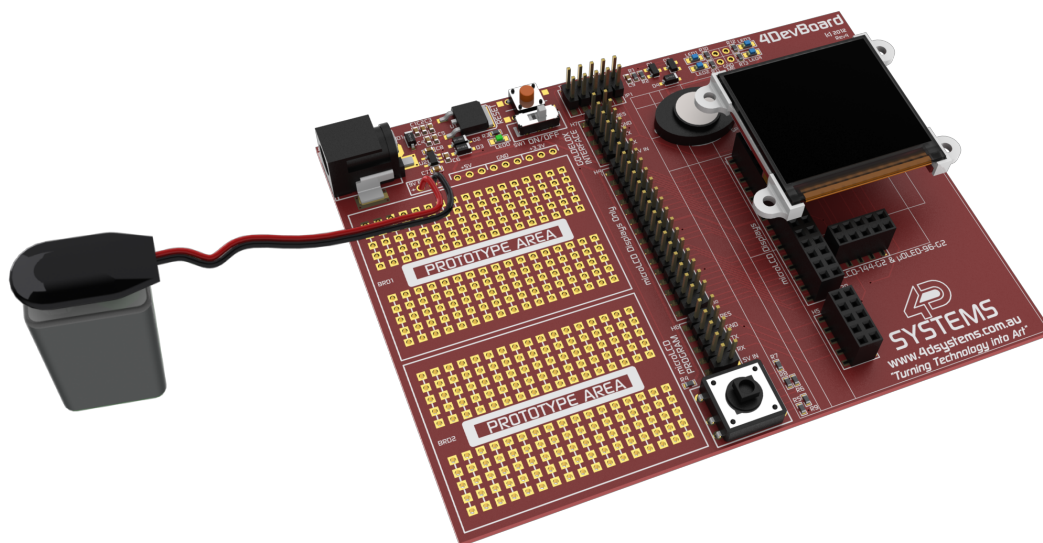
3.5. Joystick – 5 Position Multi Switch

The Joystick is a 5 position multi switch and each position connects to a junction of a resistor ladder network that forms a voltage divider, and therefore display modules using the GOLDELOX processor are capable of reading this voltage in with its Analogue to Digital (A2D) converter. The IO1 pin of μ OLED-96/128/160-G2 and μ LCD-144-G2 display modules can be programmed as an A2D input using the Workshop software suite. Utilising the A2D feature each individual switch position voltage value can be read and decoded. Refer to section 3.9 for further information.



3.6. Power Supply

The 4DevBoard can be powered by the 5 Volts supply provided by the 4D Programming Cable or it can be powered by an external wall-plug (9 Volts to 12 Volts DC) centre tap positive. The board also has provisions for soldering a flying lead 9V battery clip. Both the wall plug and the 9V battery clip are not provided.



3.7. Circuit Prototyping

The 4DevBoard is supplied with two 170 tier (2 sets of 5 rows x 17 column sockets) solder-less breadboard for circuit prototyping purposes. Each column of 5 sockets has metal strips inside it that connect the sockets together which simplifies hooking up components. It is also supplied with 40 pieces of jumper wires of various lengths that can be used join signals to external components placed on the breadboard.

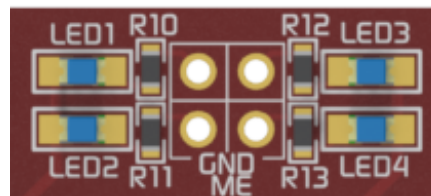
Above the prototyping area are 5V, 3.3V and GND pads to supply power to the users circuit. Wires can be soldered directly into these pads, else a connector with 2.54mm pitch could be soldered also.

3.8. User LED's

At the top of the Development Board are 4 LED's which can be driven by the users circuit.

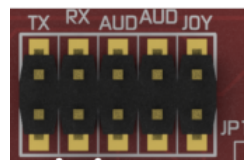
These LED's are connected to 5V via a 1.2K resistor, and are illuminated by connecting the respective pad to GND.

This allows the user to set up a simple circuit to drive these LEDs on the prototyping area, either with a simple switch, a transistor, or even a relay.



3.9. Jumper Settings

On the 4DevBoard there is a 10-pin jumper header (JP1), used to configure the Audio, Joystick and Serial Communications between the Display Module and the Development Board.

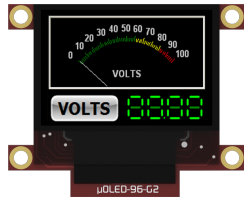


When the shunt is connected between the two relevant pins, the feature of that configuration point is enabled. When disconnected, the feature is disabled.

- **TX** – when the two pins are joined with the shunt, TX0 is connected between the display module and the relevant programming and/or interface header(s) associated with that display.
- **RX** – when the two pins are joined with the shunt, RX0 is connected between the display module and the relevant programming and/or interface header(s) associated with that display.
- **AUD** – the centre AUD configuration shunt joins IO2 of the Display Module to the audio circuit on the Development Board. This is relevant for all display modules, but most relevant for the display modules with a GOLDELOX processor.
- **AUD** – the other AUD configuration shunt joins the AUDIO_IO of the μ LCD-24/28/32/32WPTU to the audio circuit on the Development Board. AUDIO_IO is a line level signal generated from the Display Module. If AUDENB is enabled on the Display Module (on-board amplifier enable), sound will be played out of the on-board speaker on the Display Module as well as the audio circuit on the Development Board. It is recommended to disable the AUDENB on the display module if the audio circuit on the Development Board is to be used.
- **JOY** – when this shunt is connected, the joystick is attached to IO1 of the display module. It connects to all Display Modules IO1 input, however is only compatible with the display modules with a GOLDELOX processor, as the PICASO processor does not have an A2D input pin. When using the μ LCD-24/28/32/32WPTU, leave this shunt disconnected.

4. Related Products

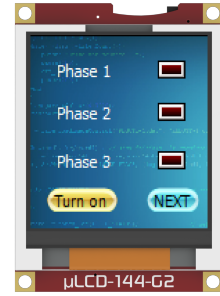
μOLED-96-G2



μOLED-128-G2



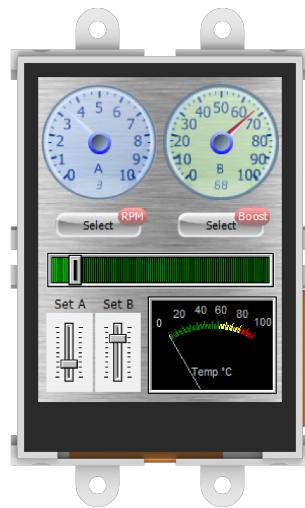
μLCD-144-G2



μOLED-160-G2



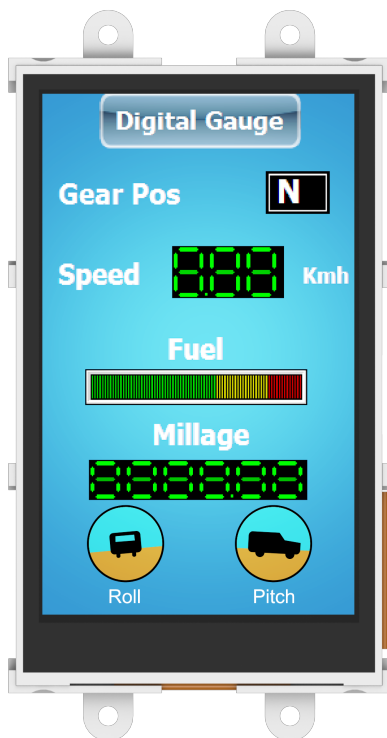
μLCD-24PTU



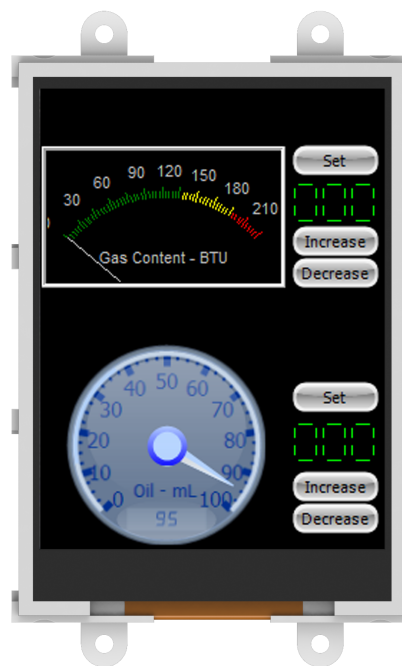
μLCD-28PTU



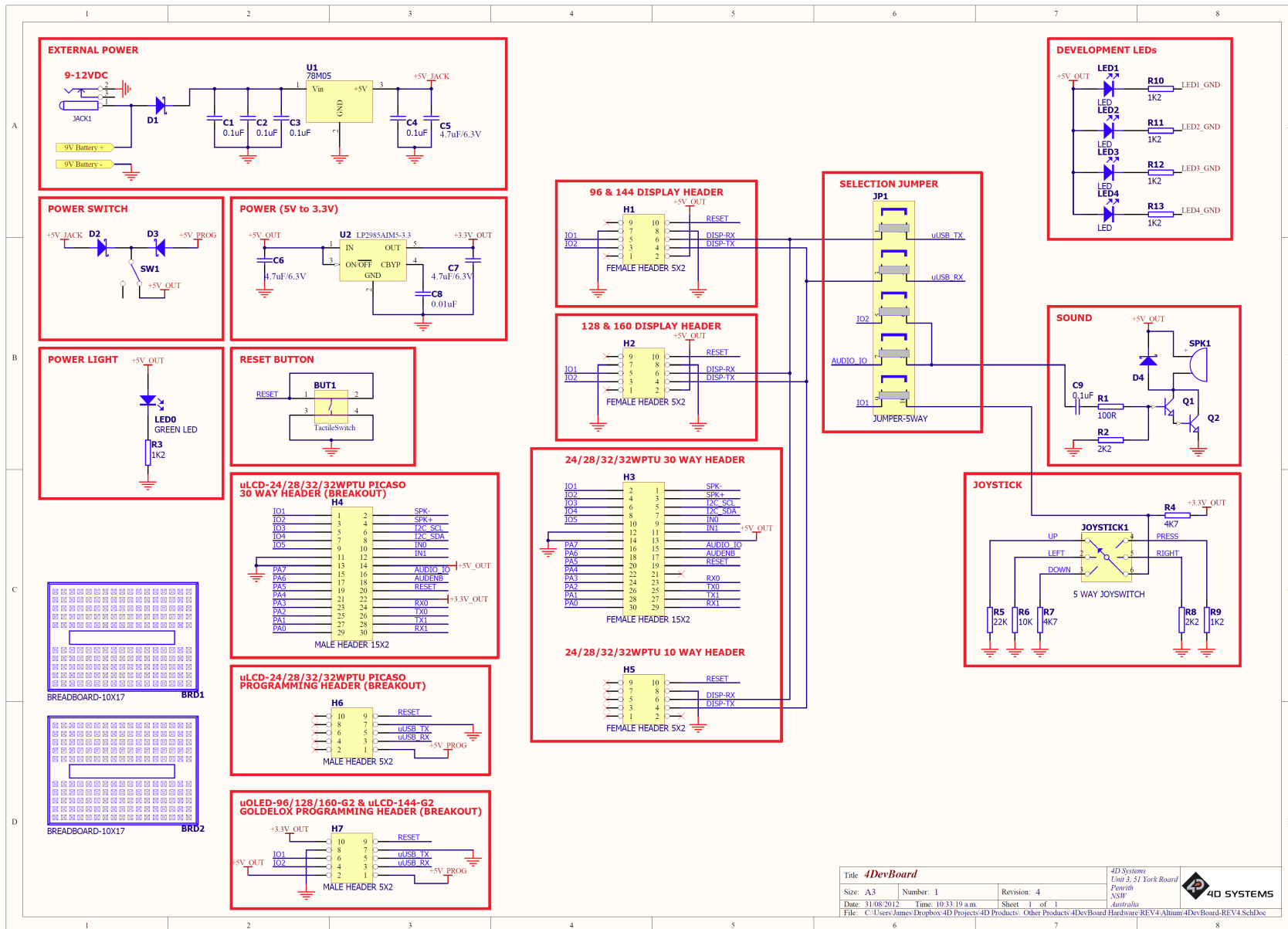
μLCD-32WPTU



μLCD-32PTU

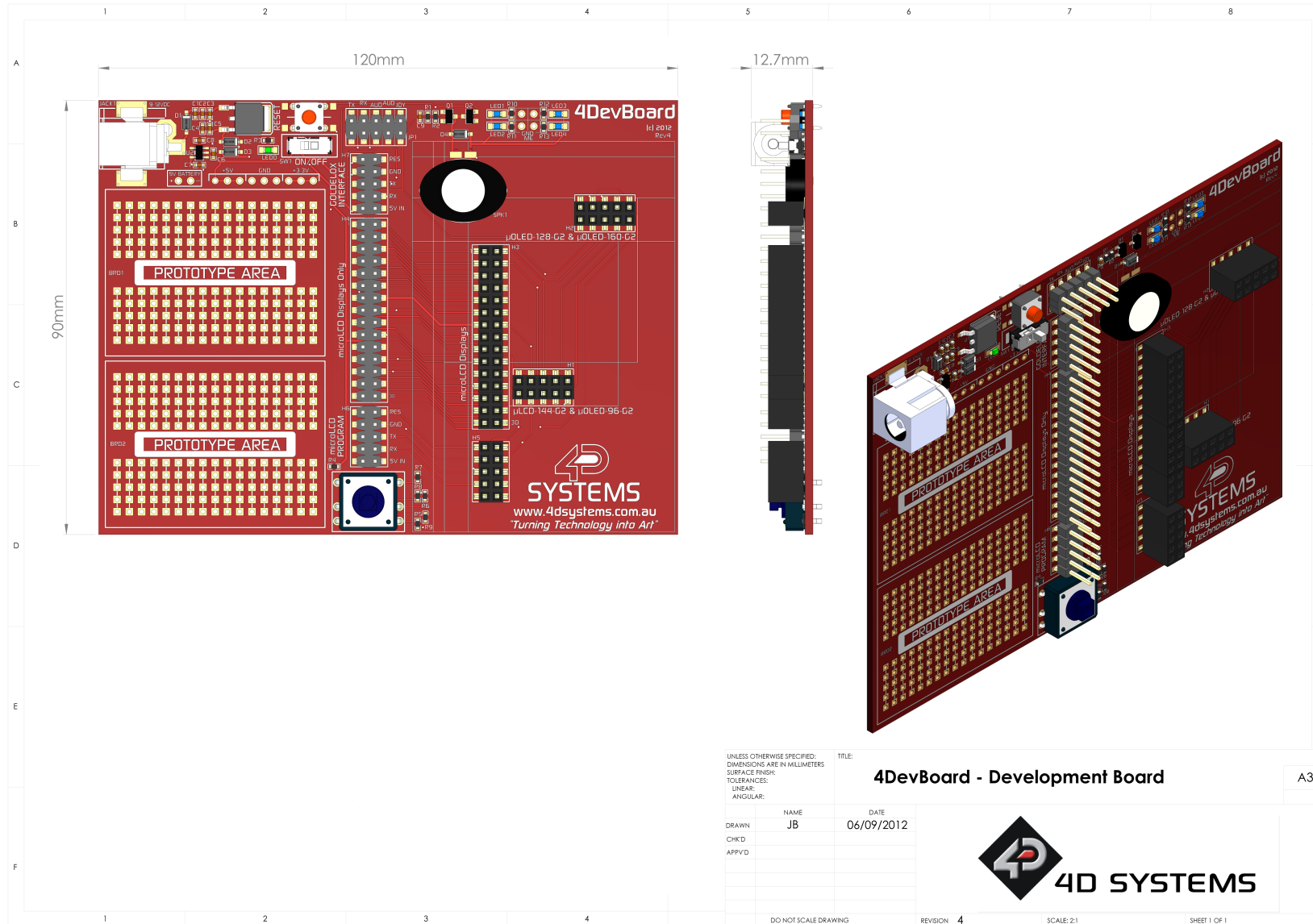


5. Schematic Design



| | | | |
|--|---------------------|---------------|---|
| Title 4DevBoard | | | 4D Systems Unit 2, 51 York Road Parrish NSW Australia |
| Size: A3 | Number: 1 | Revision: 4 | |
| Date: 31/08/2012 | Time: 10:33:19 a.m. | Sheet: 1 of 1 | |
| File: C:\Users\James\Dropbox\4D Products\4D Products\4DevBoard Hardware\REV4\4DevBoard-REV4.SchDoc | | | |

6. Mechanical Drawing



7. Specifications and Ratings

| RECOMMENDED OPERATING CONDITIONS | | | | | |
|----------------------------------|------------|-----|-----|------|-------|
| Parameter | Conditions | Min | Typ | Max | Units |
| Supply Voltage (VCC) | | 9.0 | -- | 12.0 | V |
| Operating Temperature | | -10 | -- | +70 | °C |

For specifications relating to the modules used with the 4DevBoard, please refer to their individual datasheets, available from the 4D Systems website, www.4dsystems.com.au

| ORDERING INFORMATION |
|--|
| Order Code: 4DevBoard |
| Package: 138mm x 100mm x 30mm |
| Packaging: Module sealed in antistatic foam padded 4D Systems Box |

8. Legal Notice

Proprietary Information

The information contained in this document is the property of 4D Systems Pty. Ltd. and may be the subject of patents pending or granted, and must not be copied or disclosed without prior written permission.

4D Systems endeavours to ensure that the information in this document is correct and fairly stated but does not accept liability for any error or omission. The development of 4D Systems products and services is continuous and published information may not be up to date. It is important to check the current position with 4D Systems. 4D Systems reserves the right to modify, update or makes changes to Specifications or written material without prior notice at any time.

All trademarks belong to their respective owners and are recognised and acknowledged.

Disclaimer of Warranties & Limitation of Liability

4D Systems makes no warranty, either expressed or implied with respect to any product, and specifically disclaims all other warranties, including, without limitation, warranties for merchantability, non-infringement and fitness for any particular purpose.

Information contained in this publication regarding device applications and the like is provided only for your convenience and may be superseded by updates. It is your responsibility to ensure that your application meets with your specifications.

In no event shall 4D Systems be liable to the buyer or to any third party for any indirect, incidental, special, consequential, punitive or exemplary damages (including without limitation lost profits, lost savings, or loss of business opportunity) arising out of or relating to any product or service provided or to be provided by 4D Systems, or the use or inability to use the same, even if 4D Systems has been advised of the possibility of such damages.

4D Systems products are not fault tolerant nor designed, manufactured or intended for use or resale as on line control equipment in hazardous environments requiring fail – safe performance, such as in the operation of nuclear facilities, aircraft navigation or communication systems, air traffic control, direct life support machines or weapons systems in which the failure of the product could lead directly to death, personal injury or severe physical or environmental damage ('High Risk Activities'). 4D Systems and its suppliers specifically disclaim any expressed or implied warranty of fitness for High Risk Activities.

Use of 4D Systems' products and devices in 'High Risk Activities' and in any other application is entirely at the buyer's risk, and the buyer agrees to defend, indemnify and hold harmless 4D Systems from any and all damages, claims, suits, or expenses resulting from such use. No licenses are conveyed, implicitly or otherwise, under any 4D Systems intellectual property rights.

9. Contact Information

For Technical Support: support@4dsystems.com.au

For Sales Support: sales@4dsystems.com.au

Website: www.4dsystems.com.au

Mouser Electronics

Authorized Distributor

Click to View Pricing, Inventory, Delivery & Lifecycle Information:

[4D Systems:](#)

[4DevBoard](#)