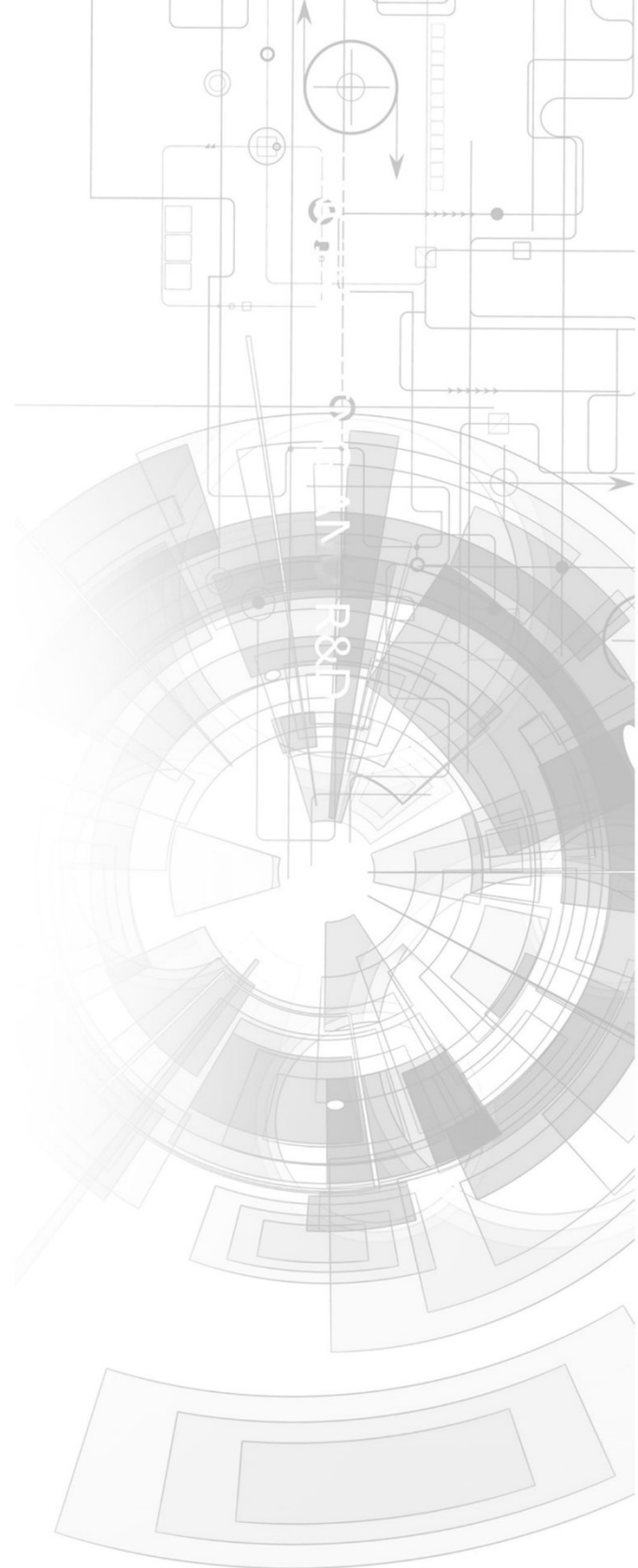


4DPi-24-HAT



Datasheet

Revision 1.22

Copyright © 2024 4D Systems

Content may change at any time. Please refer to the resource centre for latest documentation.

Contents

1. Description	3
2. Features	0
3. Pin Configuration and Summary	0
4. Connecting the Display to the Pi	0
4.1. Hardware Connection	0
4.2. Software Download/Installation	0
4.3. Calibrating the Touch Screen	0
4.4. Change the Display Orientation	0
4.5. SPI Frequency and Compression	0
4.6. Backlight Control	0
4.7. Parameters Listing	0
4.8. HDMI or 4DPi Output	0
4.9. DPI Adjustment	0
5. Display Module Part Numbers	0
6. Latest Kernel Versions	0
7. Mechanical Details	0
8. Schematic Diagram	0
9. Specifications	0
10. Appendix 1 - Code Examples - Push Buttons	0
10.1. Example for communicating to Push Buttons, for C language	0
10.2. Example for communicating to Push Buttons, for Python language	0
10.3. Example for Shutdown and Reset buttons, for C language	0
10.4. Example for Shutdown and Reset buttons, for Python language	0
11. Revision History	0
12. Legal Notice	0
12.1. Proprietary Information	0
12.2. Disclaimer of Warranties & Limitations of Liabilities	0

1. Description

The 4DPi-24-HAT is a 2.4" 320x240 Primary Display HAT for the Raspberry Pi, which plugs directly on top of a Raspberry Pi and displays the primary output which is normally sent to the HDMI or Composite output. It features an integrated Resistive Touch panel, enabling the 4DPi-24-HAT to function with the Raspberry Pi without the need for a mouse.

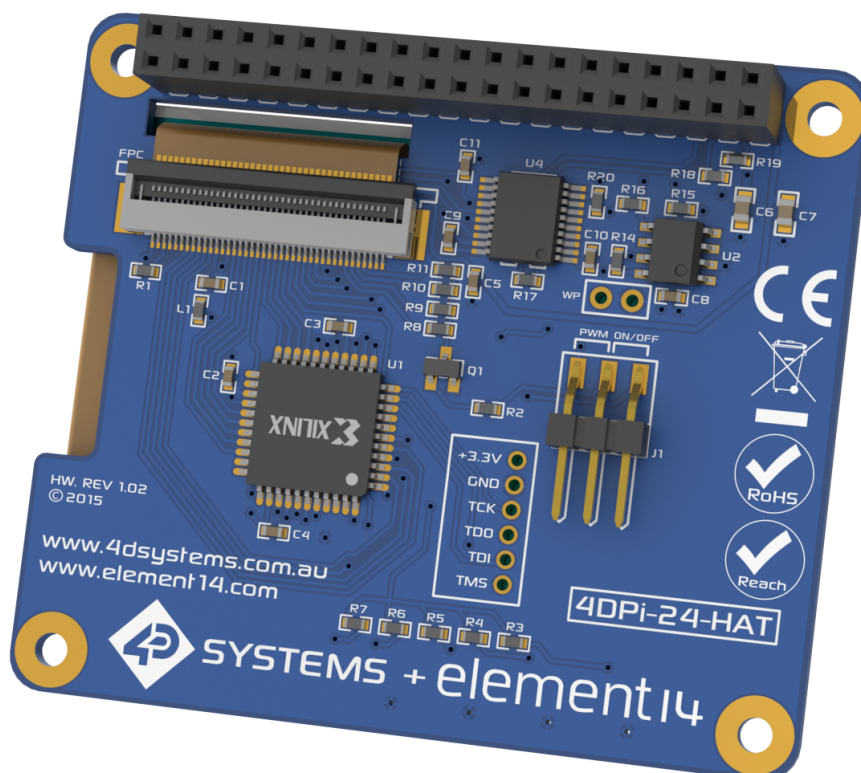
Communication between the 4DPi-24-HAT and the Raspberry Pi is interfaced with a high-speed 48Mhz SPI connection, which uses an onboard processor for direct command interpretation and SPI communication compression, and features a customised DMA-enabled kernel.

The 4DPi-24-HAT is designed to work with the Raspberry Pi Operating System (previously named Raspbian) running on the Raspberry Pi, as that is the official Raspberry Pi operating system. It is also compatible with Stretch.

The 4DPi-24-HAT is powered directly off the Raspberry Pi's 40-way Header, and the 2.4" Touch Screen allows effortless interaction with the Raspberry Pi Operating System.

Note

Raspberry Pi is a trademark of the Raspberry Pi Foundation, and all references to the words 'Raspberry Pi' or the use of its logo/marks are strictly about the Raspberry Pi product, and how *this* product is compatible with but is not associated with the Raspberry Pi Foundation in any way.



Mouser Electronics

Authorized Distributor

Click to View Pricing, Inventory, Delivery & Lifecycle Information:

[4D Systems:](#)

[4DPi-24-HAT](#)