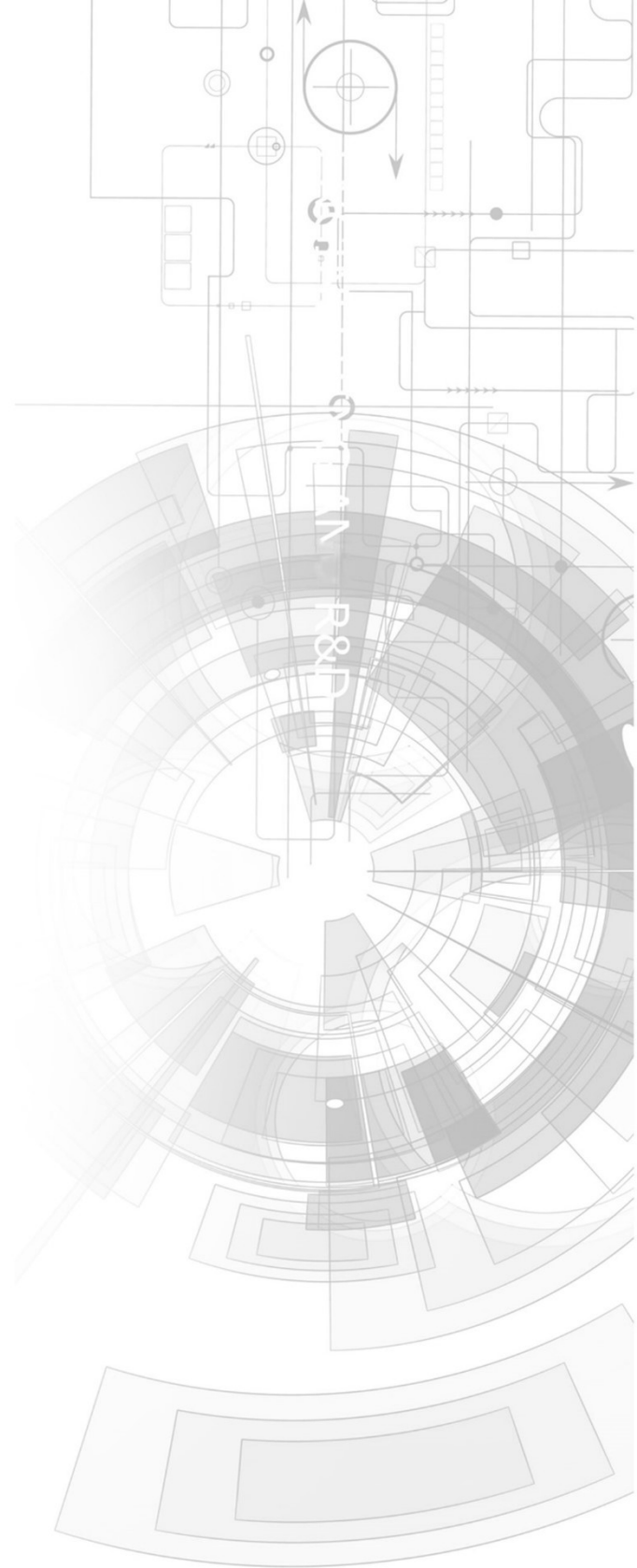


4DBEZEL-32



Datasheet

Revision 1.4

Copyright © 2023 4D Systems

Content may change at any time. Please refer to the resource centre for latest documentation.

Contents

1. Description	3
2. Features	4
3. uLCD-32PTU Assembly	5
4. Mechanical Dimensions	6
5. Revision History	7

1. Description

The 4D Systems 3.2" Display Bezel is a plastic bezel for the uLCD-32PTU display module.

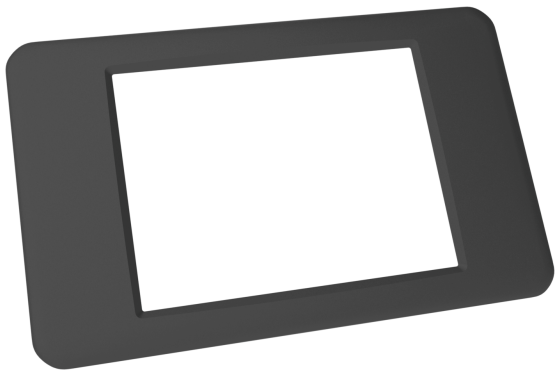
This bezel provides a sleek cover to the uLCD-32PTU display module and also provides an easy method to panel-mount the display module into an enclosure. The bezel mounts the display module, while also providing a mounting solution into a panel, keeping it all securely together.

Spring clips attach to the bezel in four locations, and hold it tightly to the enclosure/wall panel, offering a range of panel thickness from 1mm to 2.5mm without the need to add washers. If a panel thicker than 2.5mm is required, washers can be placed under the spring clip, however, this is not recommended practice.

 **Note**

This bezel is only designed for indoor use. It is not weather-tight, nor does it offer any IP rating. It should only be used indoors in clean environments as it offers little protection to the circuitry of moisture or particles.

Bezels are available in Black or White.



Bare 3.2" Bezel - Front



Bare 3.2" Bezel - Back

 **ORDERING INFORMATION**

Order Code

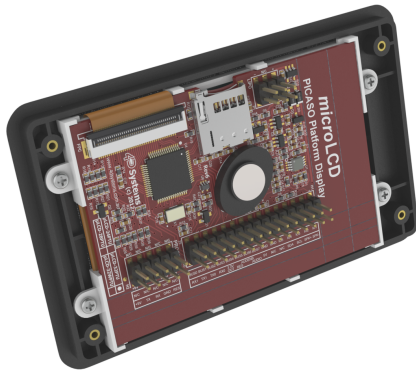
4DBEZEL-32-W (White Version)

4DBEZEL-32-B (Black Version)

Packaging: Module sealed in antistatic foam padded 4D Systems Box

2. Features

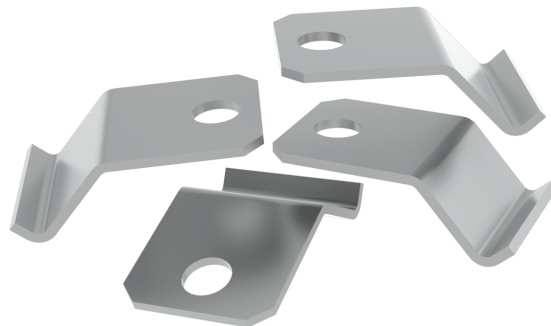
- Plastic 3.2" Bezel designed for panel mounting the uLCD-32PTU
- A simple cut-out is required, and no mounting holes require to be drilled into the panel
- Brass mounting inserts in the rear of the bezel
- 4x Spring Clips for attaching the bezel to the panel
- 8x M2 mounting screws and washers included



uLCD-32PTU Mounted in 3.2" Bezel - Back



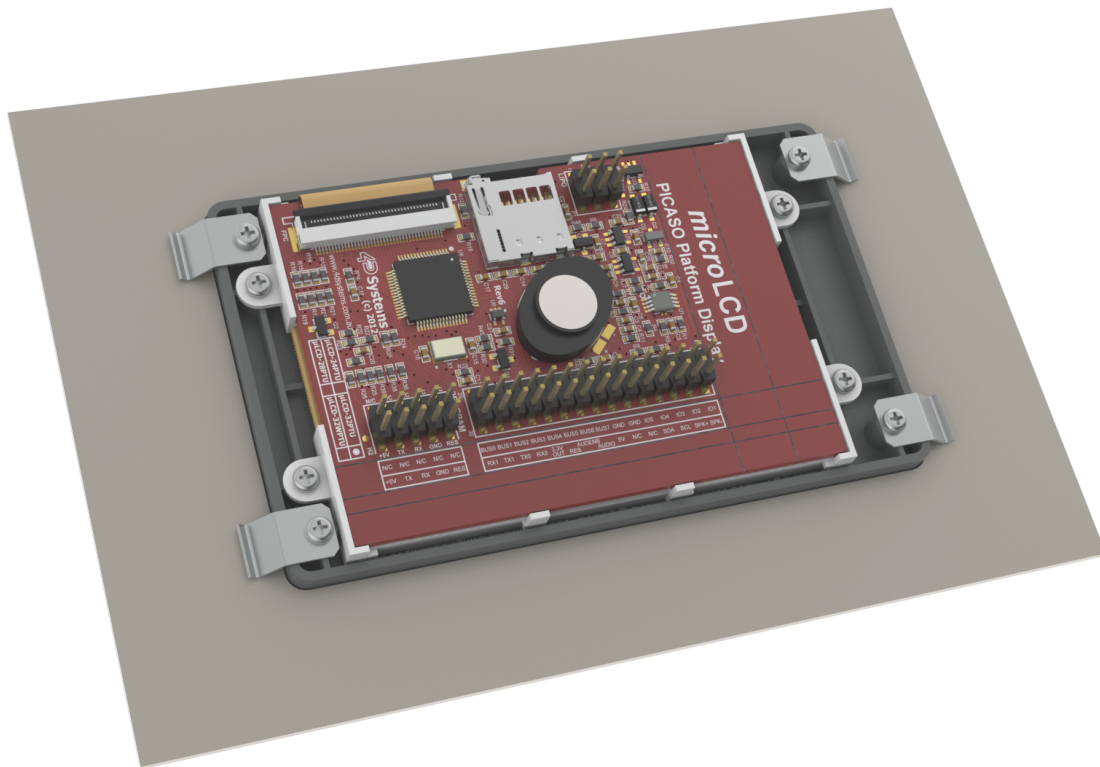
uLCD-32PTU Mounted in 3.2" Bezel - Front



Spring Clip

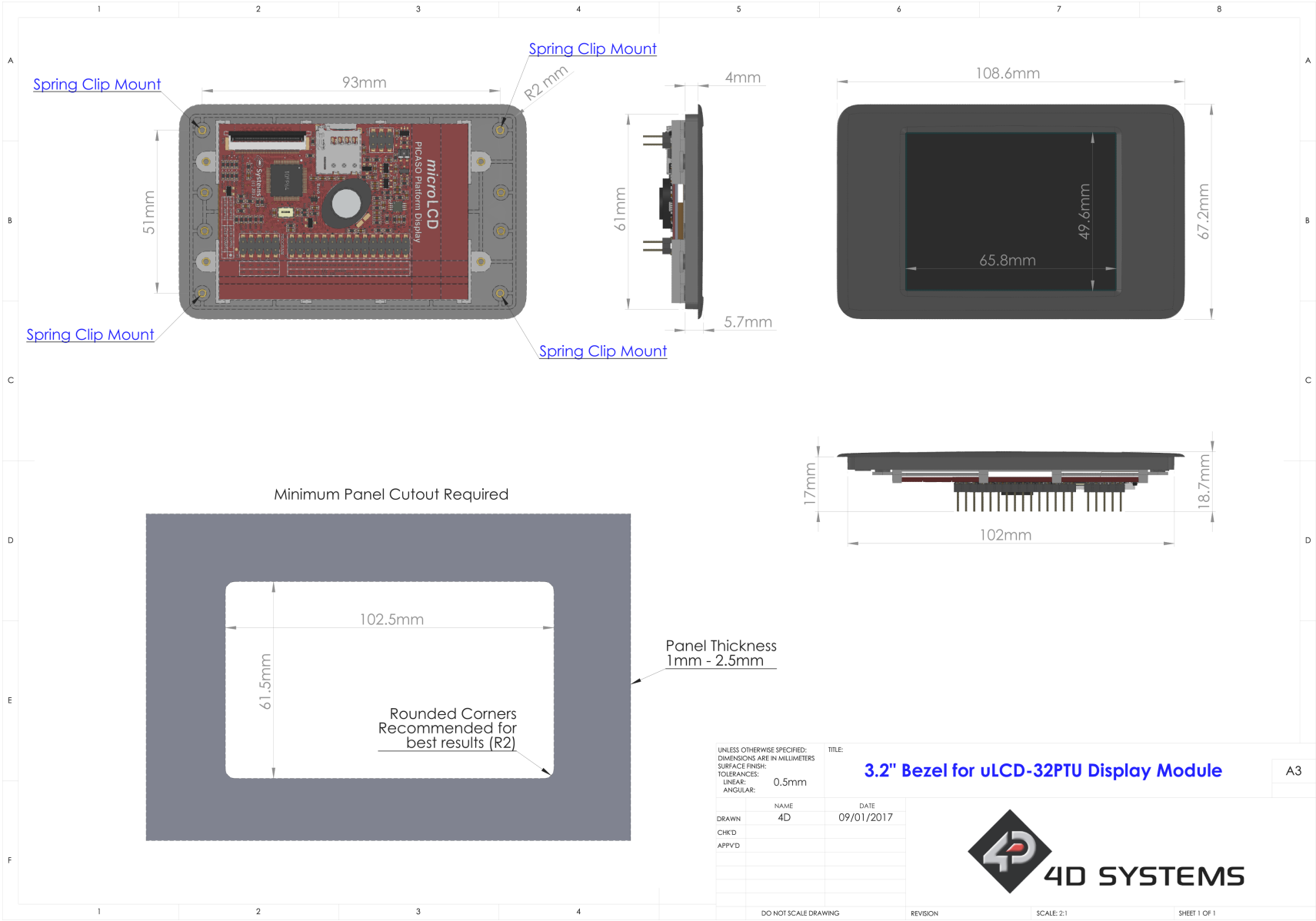
3. uLCD-32PTU Assembly

1. Place the uLCD-32PTU face down into the bezel, taking care of the orientation of the display so the active area of the display is visible through the viewing hole on the front of the bezel.
2. Insert 4 of the screws with 4 of the washers into the mounting tabs to secure the display on the bezel. Nip the screws up but take care, not to over-tighten or damage may be done to the bezel.
3. Place the assembled bezel into the Panel/Enclosure, taking note of the orientation of the display.
4. Place a washer on one of the remaining screws, followed by a spring clip, and attach it to one of the brass inserted holes on the bezel, allowing the spring clip to work against the panel, holding the bezel firmly in place.
5. Repeat for the remaining screws.
6. The bezel should now be securely fitted to the panel, and the uLCD-32PTU should be securely fitted to the bezel.



*uLCD-32PTU secured to the 3.2" Bezel, and Bezel secured to the Panel/
Enclosure using the four spring clips*

4. Mechanical Dimensions



5. Revision History

<div><div></div>Datasheet Revision</div>		
Revision Number	Date	Description
1.4	02/01/2023	Modified datasheet for web-based documentation

Mouser Electronics

Authorized Distributor

Click to View Pricing, Inventory, Delivery & Lifecycle Information:

4D Systems:

[4D-BEZEL-32-W](#) [4D-BEZEL-32-B](#) [4DBEZEL-32B](#) [4DBEZEL-32W](#)