

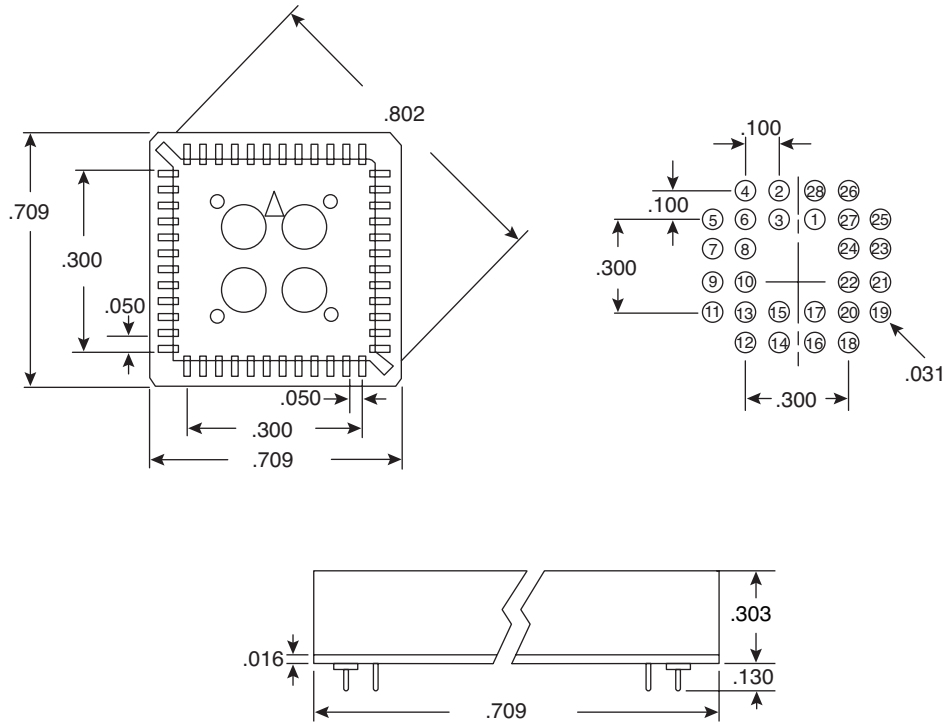
Sockets

151-1528, 151-1529



Sockets

Dimensions: in.



SPECIFICATIONS

Type:	PLCC 28 pin, thru-hole
Contact resistance:	30mΩ max. @ 100mA DC
Insulator resistance:	1000MΩ min. @ 500VDC
Current rating:	1 amp
Voltage rating:	500VAC for 1 minute
Operating temperature:	-55°C to +105°C
Contact material:	tin/gold plated phosphor bronze
Housing material:	PPS and 40% glass fiber
Contact plating:	1μ gold (151-1529), tin (151-1528)

Date Last Revised: 09-26-07

Available from Mouser Electronics
1-800-346-6873 / www.mouser.com

KC- 300219

151-1528, 151-1529

Mouser Electronics

Authorized Distributor

Click to View Pricing, Inventory, Delivery & Lifecycle Information:

[Kobiconn:](#)

[151-1529](#) [151-1528](#)