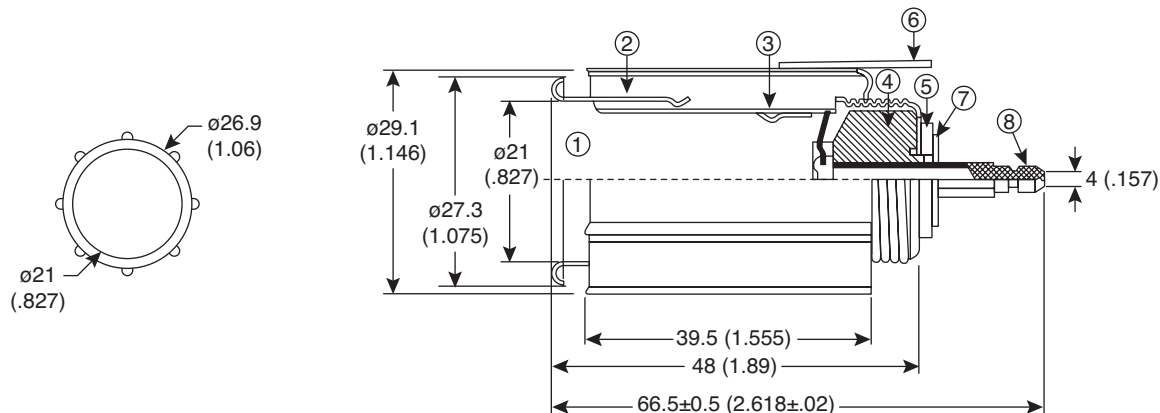
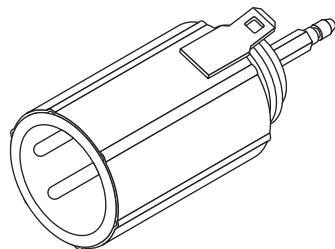


Auto Power Socket

161-2050



Auto Power Socket



Dimensions: mm (In.)

SPECIFICATIONS	
Type:	12VDC 10A max.

No.	Part Name	Material	Electroplated
1	Tube	Iron	Nickel plated
2	Casing	Iron	Color plated
3	Temp. Mom.	Alloy	- - -
4	Porcelain Socket	Ceramics	- - -
5	Insulator	Barelite	- - -
6	(-) Terminal	Iron	Color plated
7	Washer	Iron	Zinc plated
8	(+) Terminal	Copper	Nickel plated

Date Last Revised: 3-30-06

Available from Mouser Electronics
 1-800-346-6873
 www.mouser.com

KC-300075

161-2050

Mouser Electronics

Authorized Distributor

Click to View Pricing, Inventory, Delivery & Lifecycle Information:

[Kobiconn:](#)

[161-2050](#)