

SPECIFICATIONS

Insulation Resistance:	1,000MΩ min. at 500V DC
Withstanding Voltage:	500V ACrms for 1 minute
Contact Resistance:	100mΩ at 1mA / 20mV max.
Voltage Rating:	50Vrms AC
Current Rating:	0.5A
Operating Temp. Range:	-25°C to +85°C
Coplanarity:	≤ 0.1mm
Reflow Temp.:	220°C for max. 60 secs., 260° peak / 10 secs.
Mating Cycles:	10,000 (office environment)

MATERIALS AND FINISH

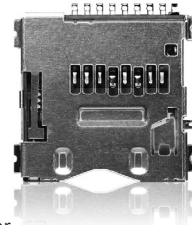
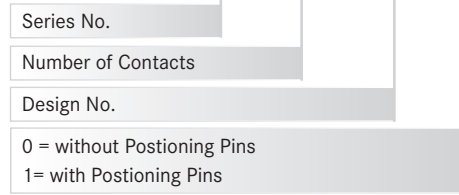
Insulator:	LCP (black)
Shielding Plate:	SUS
Contacts:	Base PB, Plating Ni-Au

FEATURES

- Card lock mechanism
- Smooth extraction function by Push-in /Push-out of card
- Reversed type

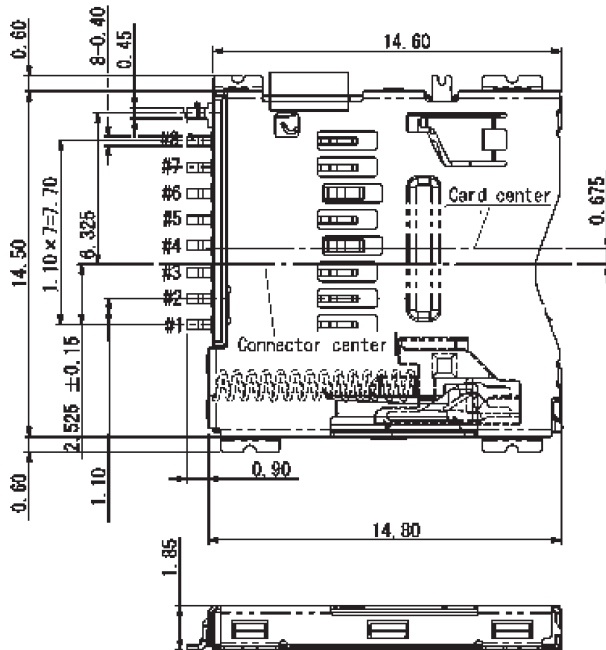
PART NUMBER

PJS 008 - 2003 - *

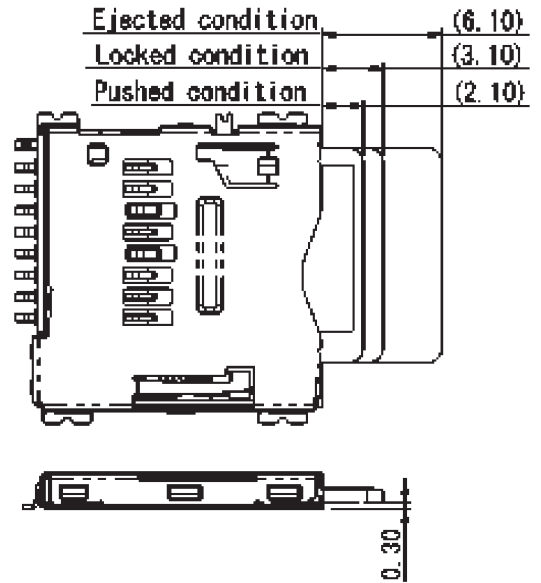


- Card detector
- Tape & Reel packaging
(PJS008-2003-0 = 1,000 / PJS008-2003-1 = 800 pcs/reel)

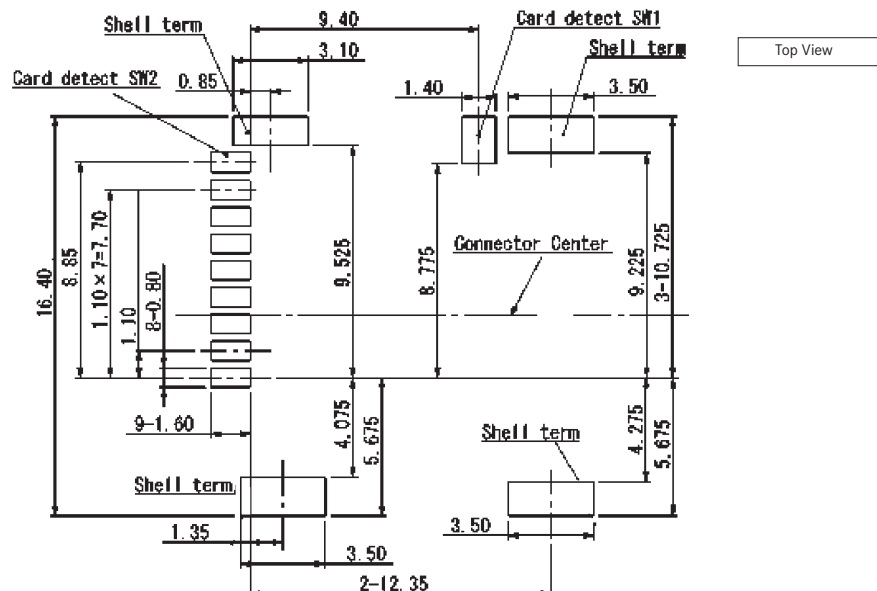
OUTLINE DIMENSIONS FOR PJS008-2003-0



CARD INSERTION DETAILS



RECOMMENDED PCB LAYOUT



Mouser Electronics

Authorized Distributor

Click to View Pricing, Inventory, Delivery & Lifecycle Information:

[Yamaichi Electronics:](#)

[PJS008-2003-0](#) [PJS008-2003-1](#)