

Specifications

Insulation Resistance:	1,000MΩ min. at 500V DC
Withstanding Voltage:	500V ACrms for 1 minute
Contact Resistance:	100mΩ at 1mA / 20mV max.
Voltage Rating:	250Vrms AC
Current Rating:	0.5A
Operating Temp. Range:	-25°C to +85°C
Coplanarity:	≤ 0.1mm
Mating Cycles:	10,000 (office environment)

Part Number (Details)

FPS 009 - 2409 - 0

Series No.

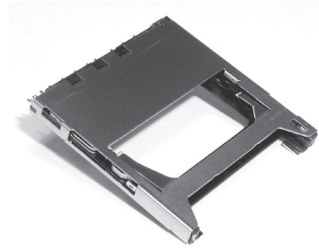
Number of Contacts

Design No.

0 = Tape & Reel Packaging

Materials and Finish

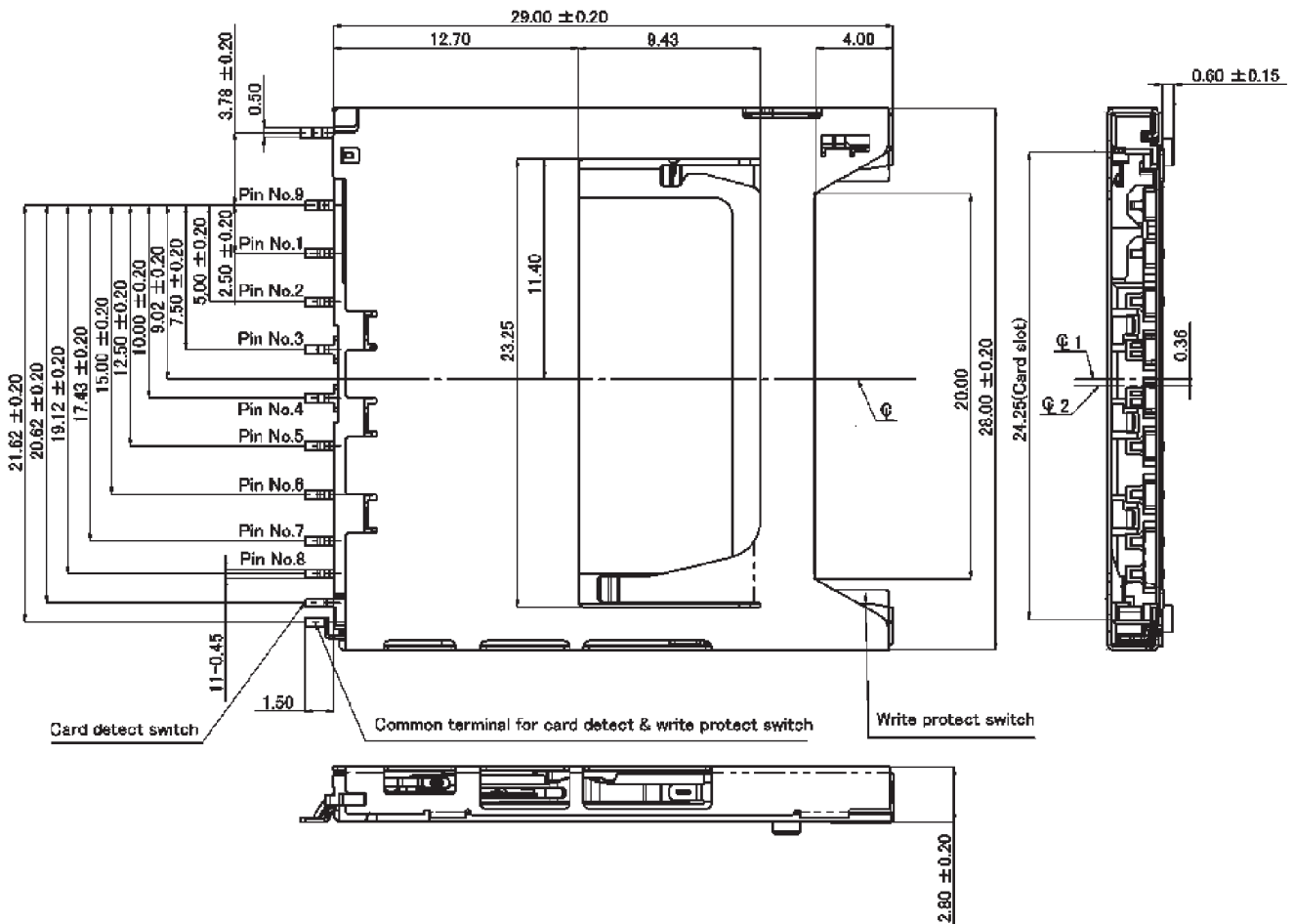
Insulator:	LCP glass filled (GF 40%) UL94V-0
Shielding Plate:	SUS, t = 0.20
Contacts:	PB, BeCu t = 0.18 / Contact area = Ni-Au / Solder Tails = Ni-SnCu



Features

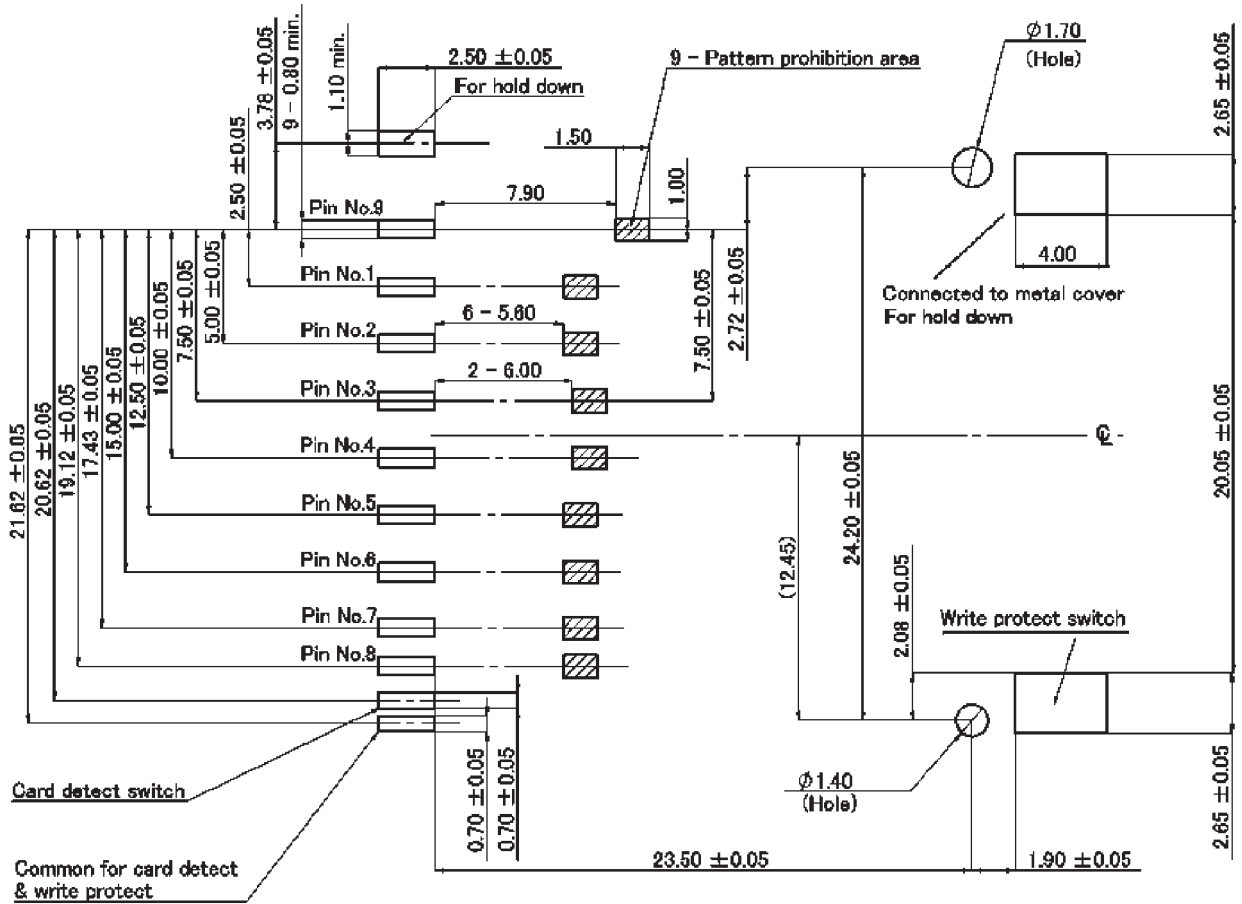
- Connector for both card types (MMC and SD card)
- Smooth extraction function by Push-in/ Push-out of card
- Soft lock mechanism for SD card
- Low profile (Ht. 2.8 x W. 28.0 x L. 30.5)
- Card detector
- Write protection switch
- Mechanism to avoid fling-off with the card
- Tape & Reel packaging (600 pcs / reel)
- Two-point contact, protection against electrical interruption

Outline Dimensions



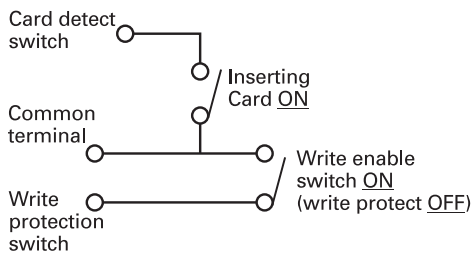
Recommended PCB Layout for FPS009-2409-0

Top View

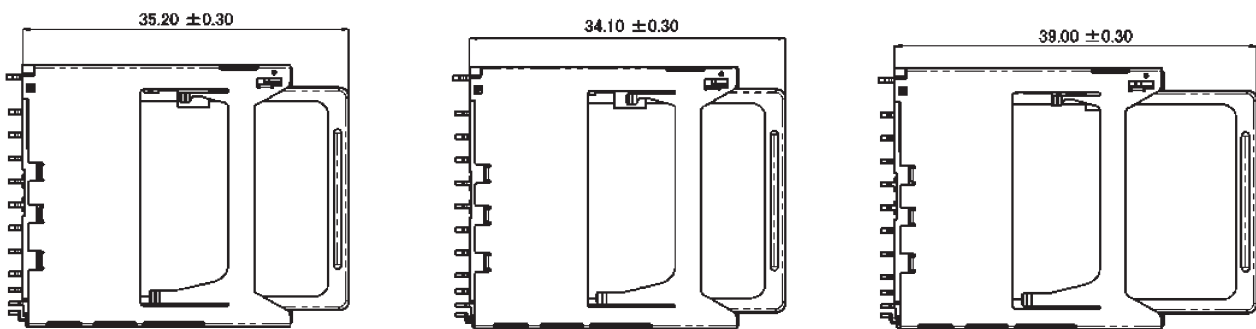


SD and MMC

Circuit Diagram for Switch



Card Insertion Details



Card locked position

Card pushed position

Card eject position

Mouser Electronics

Authorized Distributor

Click to View Pricing, Inventory, Delivery & Lifecycle Information:

[Yamaichi Electronics:](#)

[FPS009-2409-0](#)