

SPECIFICATIONS

Insulation Resistance:	1,000MΩ min.
Withstanding Voltage:	5V AC
Contact Resistance:	SD/MMC - 100mΩ max. Duo - 100mΩ max.
Current Rating:	0.5A max. per contact
Operating Temp. Range:	-20°C to +85°C
Mating Cycles:	10,000 insertions

MATERIALS AND FINISH

Insulator: LCP
Contact : Phospor Bronze

FEATURES

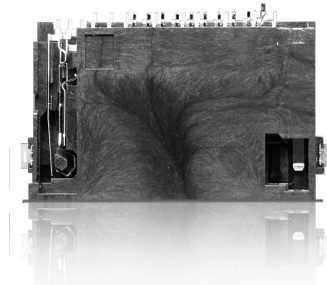
- Card Reader for SD / MMC/ MS Duo
- With card detection switch

PART NUMBER

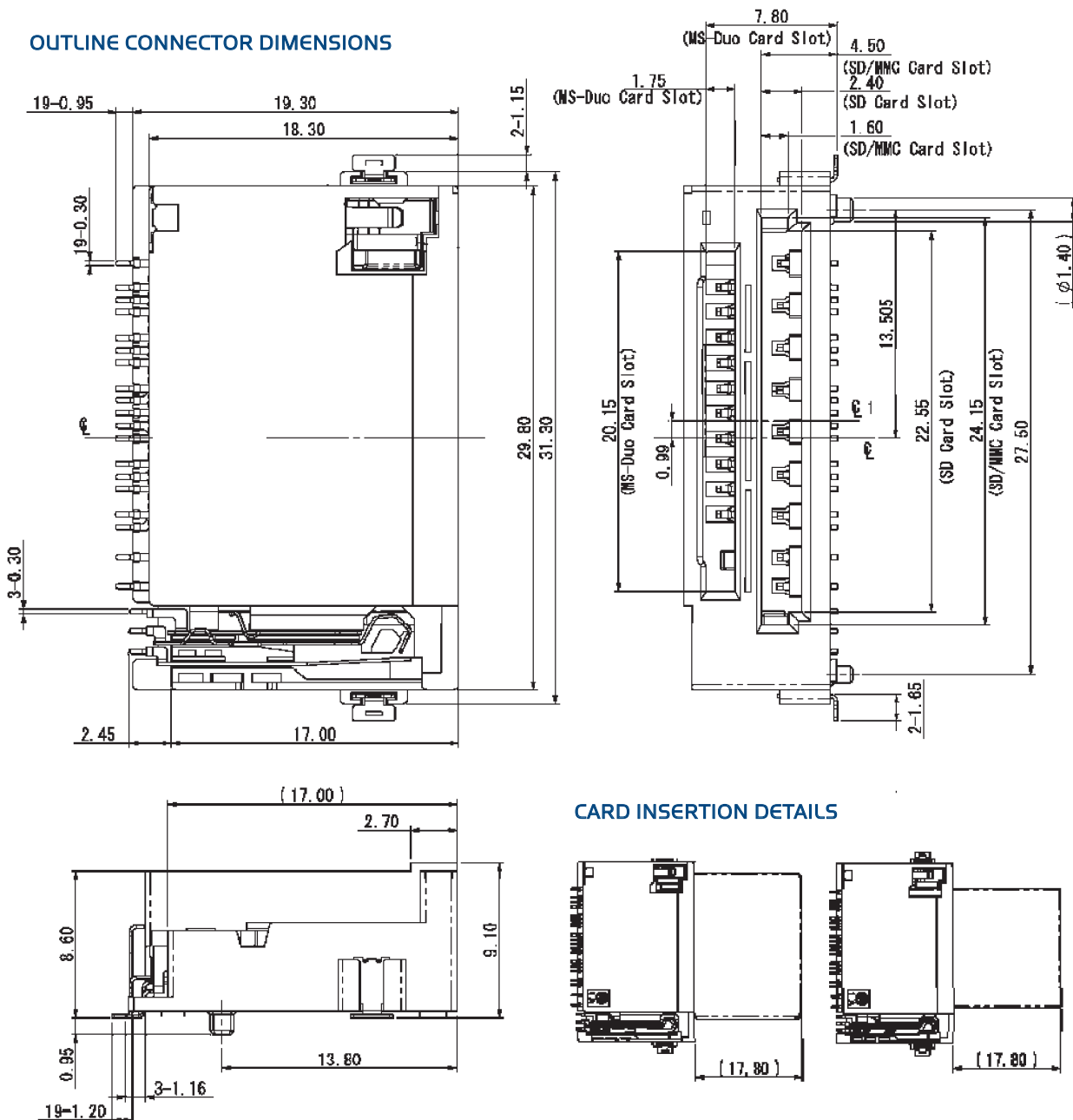
FR5020 - 3100 - 0

Series No.

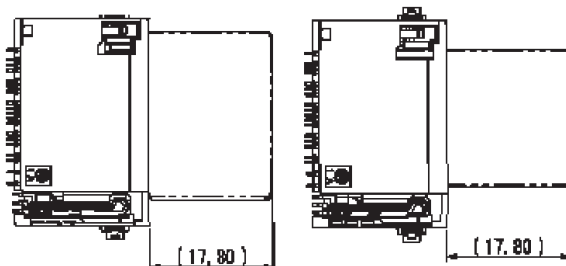
Design No.



OUTLINE CONNECTOR DIMENSIONS



CARD INSERTION DETAILS



Mouser Electronics

Authorized Distributor

Click to View Pricing, Inventory, Delivery & Lifecycle Information:

[Yamaichi Electronics:](#)

[FRS020-3100-0](#)