

SPECIFICATIONS:

- Insulation Resistance: 1,000MΩ min. at 100V DC
- Withstanding Voltage: 300Vrms for 1min
- Voltage Rating: 30V DC
- Current Rating: Contacts:
 - Signal: 0.5A/ pin
 - Power: 1.5A/ pin (Upto 2.25A/pin capability depending on PCB condition)
- Contact Resistance: 10mΩ max. at 20mV max.
- Operating Temp.: -40 - +85°C MAX
- Mating Cycle: 100 times

QSFP-DD MSA COMPLIANT

PART NUMBER:
CN174S-076-000X

Series Name

Host Connector

76 Pins

Solder Pad Options:

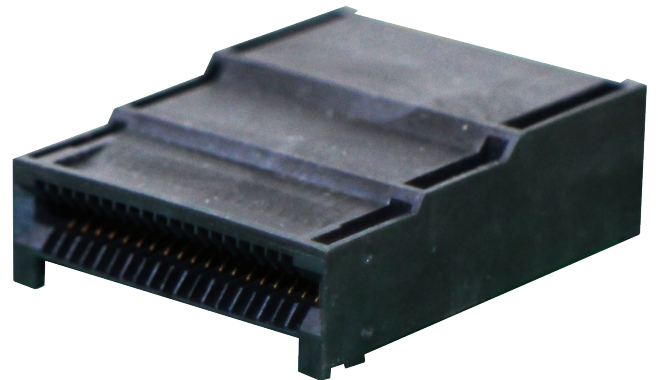
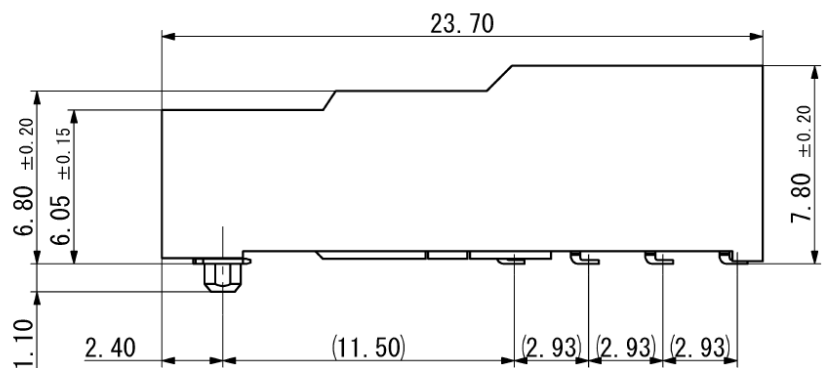
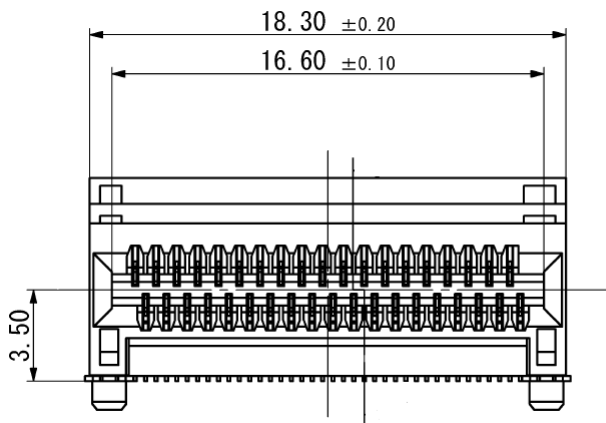
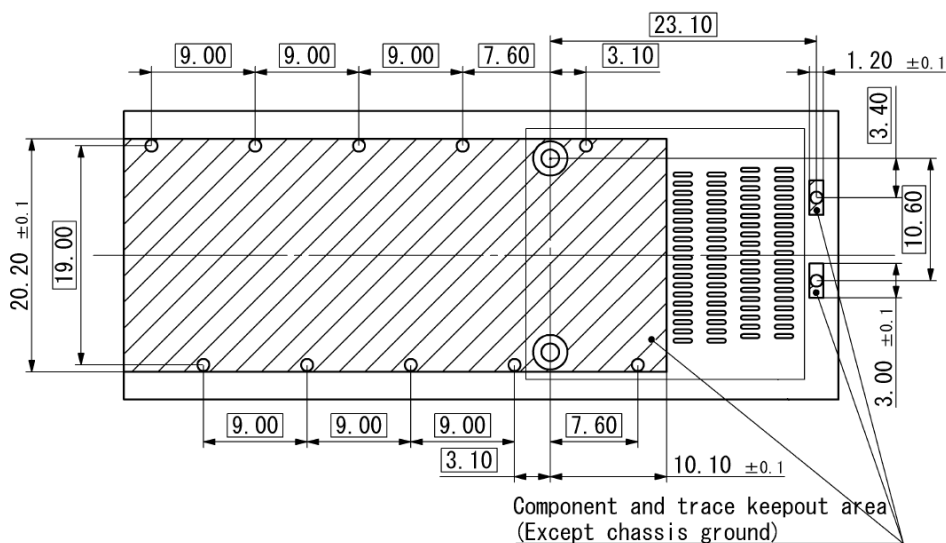
- 1 = Without Solder Pad
- 2 = With Solder Pad

MATERIALS AND FINISH:

- Blade Contacts: Cu Alloy
- Solder Pad: Cu Alloy
- Insulator & Over mold: LCP

FEATURES:

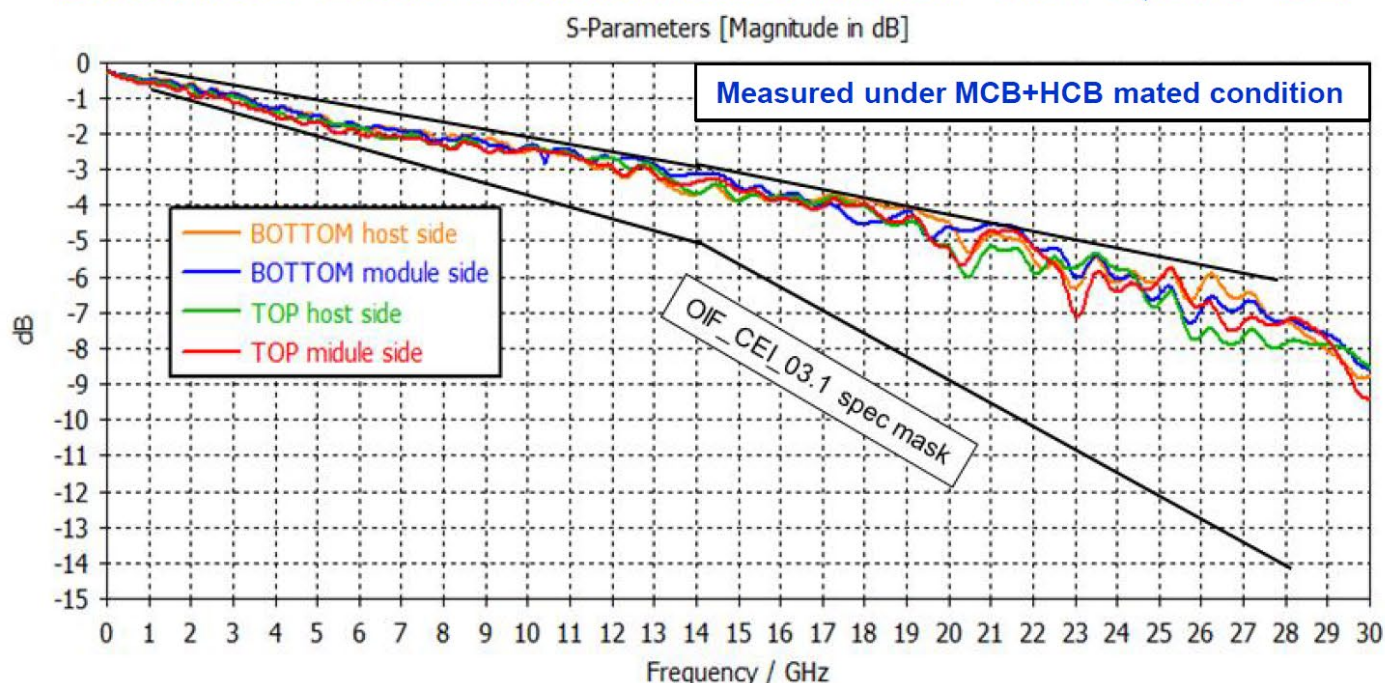
- QSFP-DD MSA Design Guideline Compliant
- Supports signals:
 - 28Gbps-NRZ & 56Gbps-PAM4 for 200G & 400G
 - Next Gen. 112Gbps-PAM4 for 800G


OUTLINE DIMENSIONS:

RECOMMENDED PC BOARD LAYOUT:


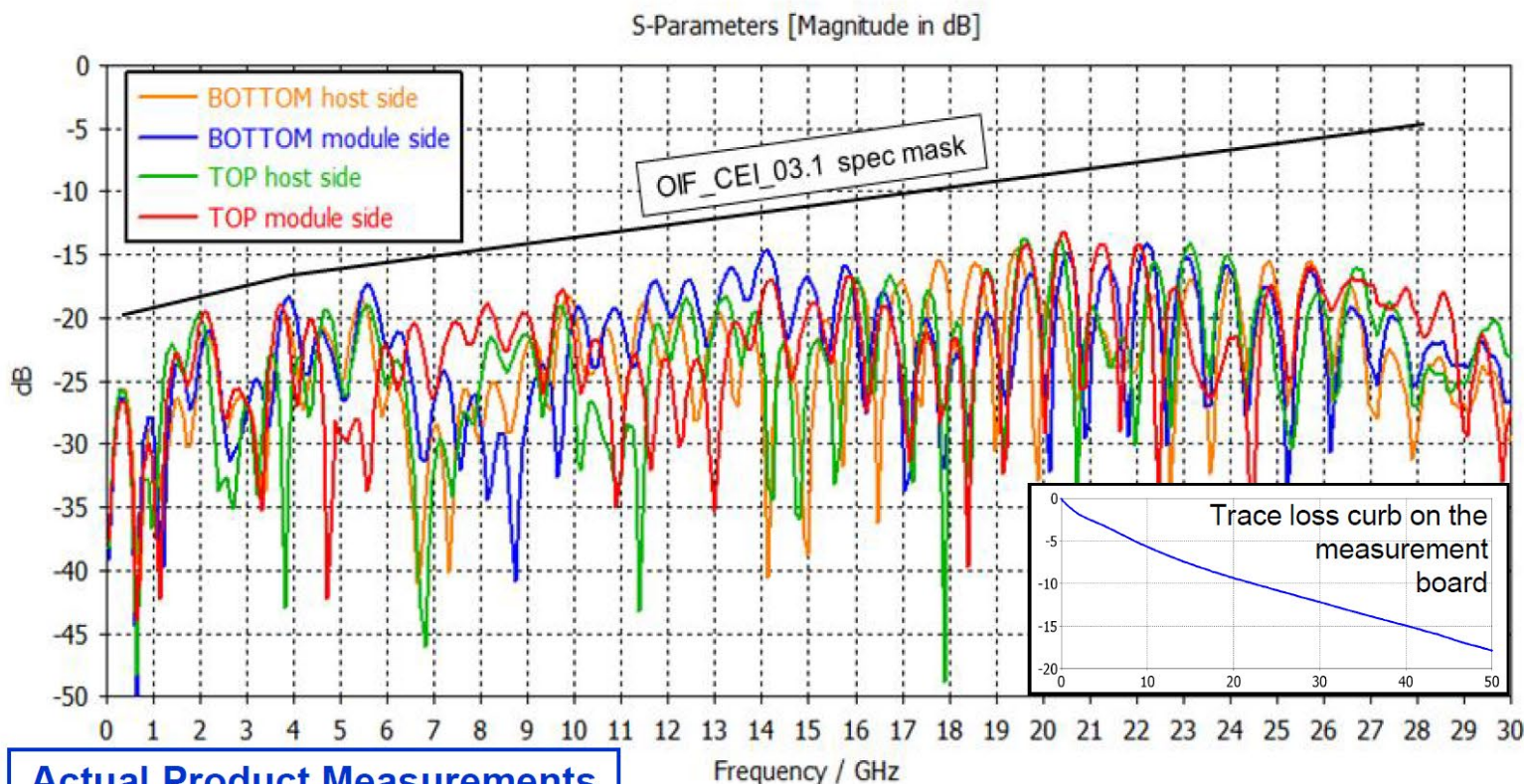
YAMAICHI ELECTRONICS

QSFP-DD Solution

Insertion Loss Measurements for 1x1 QSFP-DD



Return Loss Measurements for 1x1 QSFP-DD



Actual Product Measurements

© 2022 Yamaichi Electronics USA Incorporated. All brand or product names may be trademarks of their respective companies.

Yamaichi Electronics USA Inc.
Visit Us @ WWW.YEU.COM
Email: Info@yeu.com
TEL: 408-715-9100

Mouser Electronics

Authorized Distributor

Click to View Pricing, Inventory, Delivery & Lifecycle Information:

[Yamaichi Electronics:](#)

[CN174S-076-0001](#)