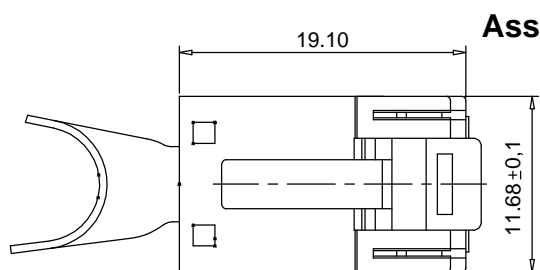
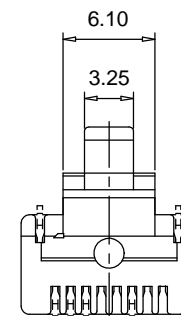
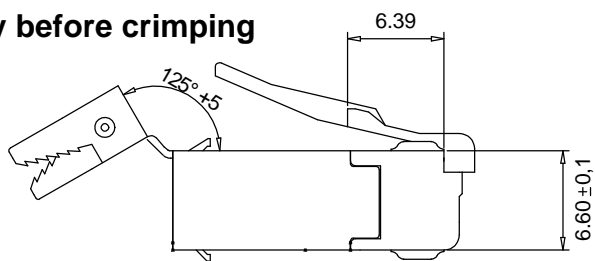


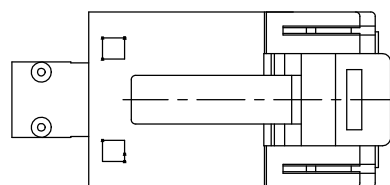
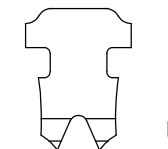
THE INFORMATION CONTAINED IN THIS DRAWING IS THE SOLE PROPERTY OF YAMAICHI ELECTRONICS DEUTSCHLAND GmbH. ANY REPRODUCTION IN PART OR WHOLE WITHOUT THE WRITTEN PERMISSION OF YAMAICHI ELECTRONICS DEUTSCHLAND GmbH IS PROHIBITED.



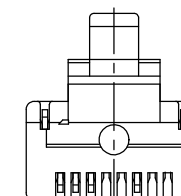
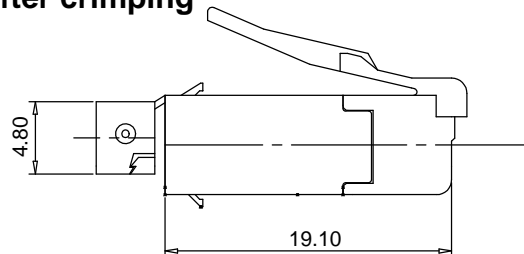
Assembly before crimping



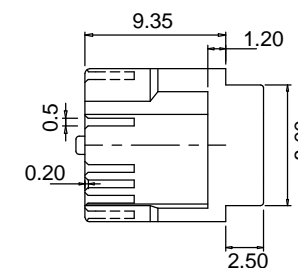
Contacts for stranded wire



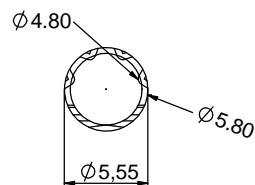
Assembly after crimping



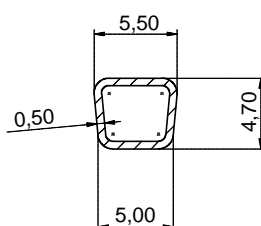
INSERT



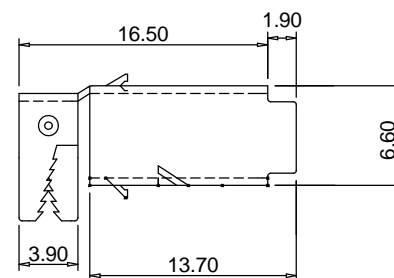
Shield after round crimping



After square crimping



Shield



Material :
Housing material : PBT
Durability : 2000 mating cycles
Contact blade : phosphor Bronze
High strenght copper alloy
100 microinches nickel under plated &
gold selected 30 microinches

UNLESS OTHERWISE SPECIFIED: DIMENSIONS ARE IN MILLIMETERS TOLERANCES: ± 0.3		REV.	REVISION DESCRIPTION	INITIALS	REV. DATE
		5			
		4			
		3			
		2			
NOTES:		1			
		DO NOT SCALE DRAWING		CLASSIFICATION:	
		DESIGN	NAME	DATE	Customer-drawing
		DRAWN			
CHECKED		Q.A.			
ANGLE PROJECTION: First		APPROVED			
		DWG NO: Customer-P(090)A11		REV. ORIGIN B	REV. -
				SHEET 1 OF 1 A3 - ASSEMBLY	



TITLE: Y-CON Plug-21 / 8(4)+2 Ethernet RJ45plus with power contacts

Mouser Electronics

Authorized Distributor

Click to View Pricing, Inventory, Delivery & Lifecycle Information:

[Yamaichi Electronics:](#)

[Y-ConPlug-21](#)