



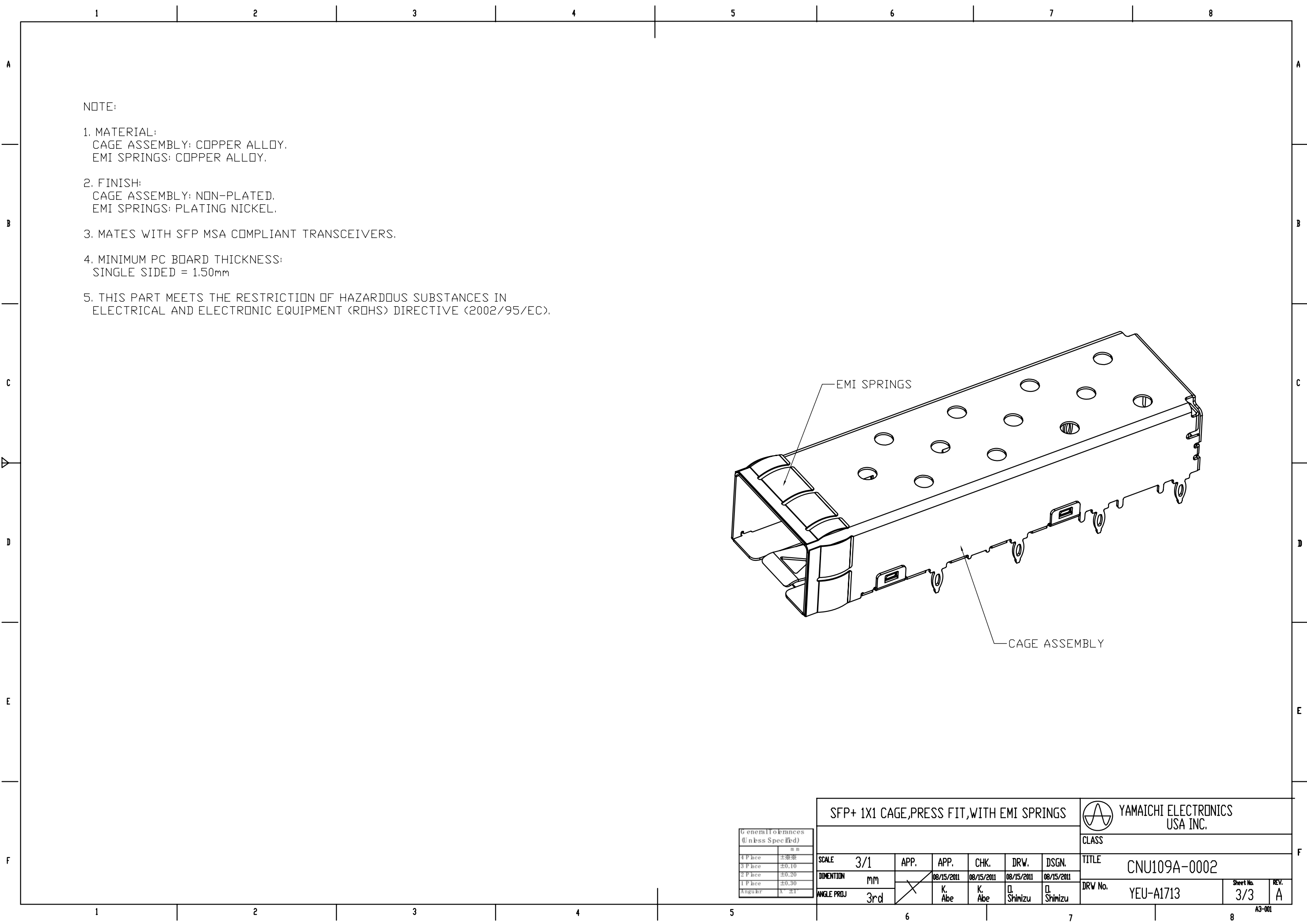
DETAIL A

---

2:1

| General Tolerances<br>(Unless Specified) |       |
|--|-------|
|  | mm    |
| 4 Place                                  | ±0.05 |
| 3 Place                                  | ±0.10 |
| 2 Place                                  | ±0.20 |
| 1 Place                                  | ±0.30 |
| Angular                                  | ±1°   |


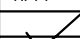
|  |     |   |            |            |            |            |  |      |
|--|-----|---|------------|------------|------------|------------|--|------|
| SFP+ 1X1 CAGE,PRESS FIT,WITH EMI SPRINGS |     |   |            |            |            |            |  YAMAICHI ELECTRONICS<br>USA INC. |      |
|  |     |   |            |            |            |            | CLASS  |      |
| SCALE                                    | 3/1 | APP.  | APP.       | CHK.       | DRW.       | DSGN.      | TITLE  |      |
| DIMENTION                                | mm  |  | 08/15/2011 | 08/15/2011 | 08/15/2011 | 08/15/2011 | CNU109A-0002   |      |
| ANGLE PROJ                               | 3rd |   | K. Abe     | K. Abe     | D. Shimizu | D. Shimizu | DRW No. YEU-A1713  |      |
|  |     |   |            |            |            |            | Sheet No.  | REV. |
|  |     |   |            |            |            |            | 2/3  | A    |
| 6  |     |   |            | 7          |            |            | 8  |      |
|  |     |   |            |            |            |            | A3-001   |      |



NOTE:

- 1. MATERIAL:  
CAGE ASSEMBLY: COPPER ALLOY,  
EMI SPRINGS: COPPER ALLOY,
- 2. FINISH:  
CAGE ASSEMBLY: NON-PLATED,  
EMI SPRINGS: PLATING NICKEL,
- 3. MATES WITH SFP MSA COMPLIANT TRANSCEIVERS.
- 4. MINIMUM PC BOARD THICKNESS:  
SINGLE SIDED = 1.50mm
- 5. THIS PART MEETS THE RESTRICTION OF HAZARDOUS SUBSTANCES IN  
ELECTRICAL AND ELECTRONIC EQUIPMENT (ROHS) DIRECTIVE (2002/95/EC).

| General Tolerances<br>(Unless Specified) |       |
|--|-------|
|  | mm    |
| 4 Place                                  | ±0.30 |
| 3 Place                                  | ±0.10 |
| 2 Place                                  | ±0.20 |
| 1 Place                                  | ±0.30 |
| Angular                                  | ±1°   |

|  |     |   |            |            |            |            |  |           |           |      |
|--|-----|---|------------|------------|------------|------------|--|-----------|-----------|------|
| SFP+ 1X1 CAGE,PRESS FIT,WITH EMI SPRINGS |     |   |            |            |            |            |  YAMAICHI ELECTRONICS<br>USA INC. |           |           |      |
|  |     |   |            |            |            |            | CLASS  |           |           |      |
| SCALE                                    | 3/1 | APP.  | APP.       | CHK.       | DRW.       | DSGN.      | TITLE  |           |           |      |
| DIMENTION                                | mm  |  | 08/15/2011 | 08/15/2011 | 08/15/2011 | 08/15/2011 | CNU109A-0002   |           |           |      |
| ANGLE PROJ                               | 3rd |   | K. Abe     | K. Abe     | □ Shimizu  | □ Shimizu  | DRW No.  | YEU-A1713 | Sheet No. | REV. |
|  |     |   |            |            |            |            |  |           | 3/3       | A    |
| 6  |     |   |            |            |            |            | 7  |           | 8         |      |
|  |     |   |            |            |            |            |  |           | A3-001    |      |

# Mouser Electronics

Authorized Distributor

Click to View Pricing, Inventory, Delivery & Lifecycle Information:

[Yamaichi Electronics:](#)

[CNU109A-0002](#)