

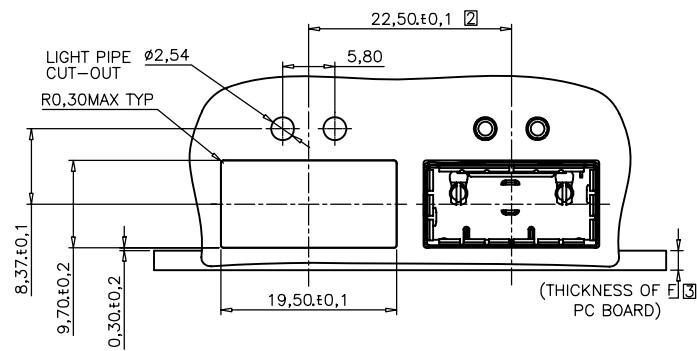
REVISION DESCRIPTION		APP.	DRW.	DATE	CHANGE No.
Δ x					
Δ x					
Δ x					

1. MATERIALS:
CAGE ASSEMBLY: COPPER ALLOY, 0.25 THICKNESS
EMI SPRING: STAINLESS STEEL
FRONT FLANGE: ZINC ALLOY
HEAT SINK: ALUMINUM
HEAT SINK CLIP: STAINLESS STEEL
LIGHT PIPE MATERIAL: CLEAR POLYCARBONATE
2. SPACING BETWEEN GAGES ON THE SAME PC BOARD, TO BE SPECIFIED BY CUSTOMER, MUST COMPLY WITH MINIMUM DIMENSIONS SHOWN.
3. DIMENSION F IS THE NOMINAL THICKNESS OF CUSTOMER SUPPLIED PC BOARD.
MINIMUM SINGLE SIDED PC BOARD THICKNESS: 1.45mm
MINIMUM DOUBLE SIDED PC BOARD THICKNESS: 2.7mm PER QSFP
4. DIMENSION APPLIES WITH MODULE INSERTED IN CAGE.
5. MATES WITH QSFP MSA COMPATIBLE TRANSCEIVER.
6. INSIDE SURFACE OF CASKET WHEN FULLY COMPRESSED.
7. SURFACE TRACES PERMITTED WITHIN THIS AREA EXCEPT WHERE CAGE STANDOFFS, SHOWN IN DETAIL S CONTACT PC BOARD.
8. EMI SPRING FINISH: CLEAR PASSIVATION
FRONT FLANGE FINISH: OVER 8um MIN COPPER, OVER 8um MIN NICKEL
HEAT SINK FINISH: CLEAR PASSIVATION
HEAT SINK CLIP FINISH: CLEAR PASSIVATION
9. CAGE BASED ON STD. SFF-8436 Rev 3.5.
10. THIS PRODUCT COMPLY TO ROHS DIRECTIVE 2002/95/EC.
11. DATUM X & Y ARE ESTABLISHED BY THE CUSTOMER'S FIDUCIAL
12. DATUM A IS THE TOP SURFACE OF THE HOST BOARD
13. LOCATION OF THE EDGE OF PCB IS APPLICATION SPECIFIC
14. BASELINE FOR THESE DIMENSIONS IS THE CENTER OF COMPLIANT PIN HOLE.
15. FINISHED HOLE SIZE
16. UNPLATED THRU HOLE.
17. CENTERLINE OF PAD
18. SURFACE TRACES PERMITTED WITHIN THIS LENGTH

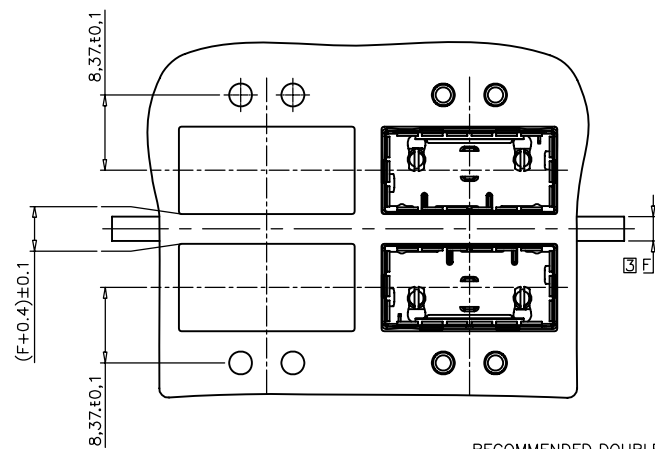
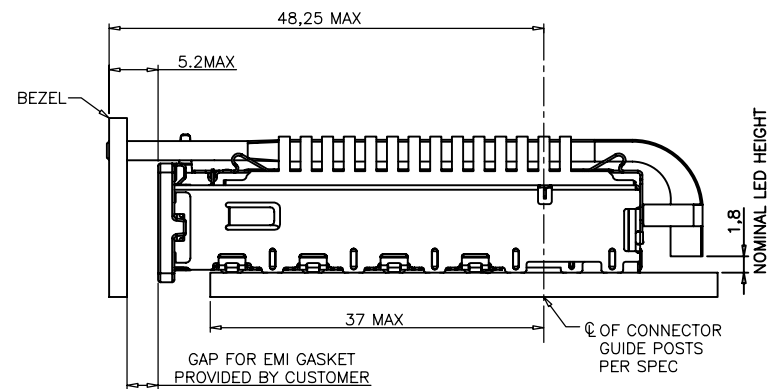
UNITS:		
MM	INCH	
GENERAL TOLERANCES: UNLESS SPECIFIED		
	MM	INCH
4 PLACE	±.005	±.0004
3 PLACE	±.01	±.0008
2 PLACE	±.02	±.0016
1 PLACE	±.03	±.0024
ANGULAR	X°±2°	X°±1°

YAMAICHI ELECTRONICS USA INC.		CLASS		TITLE	
		QSFP Cage Assembly		CNU120A-10-**-30	
DRW No.		Sheet No.		REV.	
YEU-A1929		1/4		A	

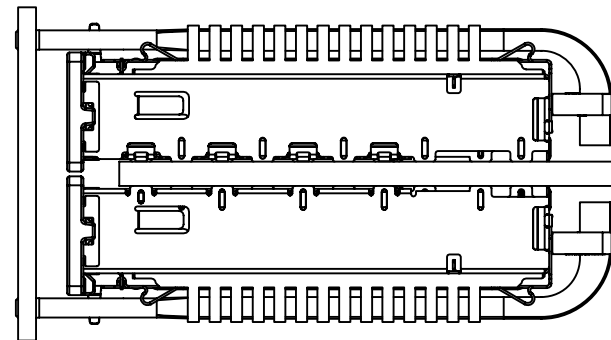
SCALE	2/1	APP.	APP.	CHK.	DRW.	DSGN.
DIMENTION	mm					
ANGLE PROJ	3rd					
		K. Abe	K. Abe	O. Shimizu	O. Shimizu	



RECOMMENDED SINGLE SIDE MOUNTING BEZEL DESIGN

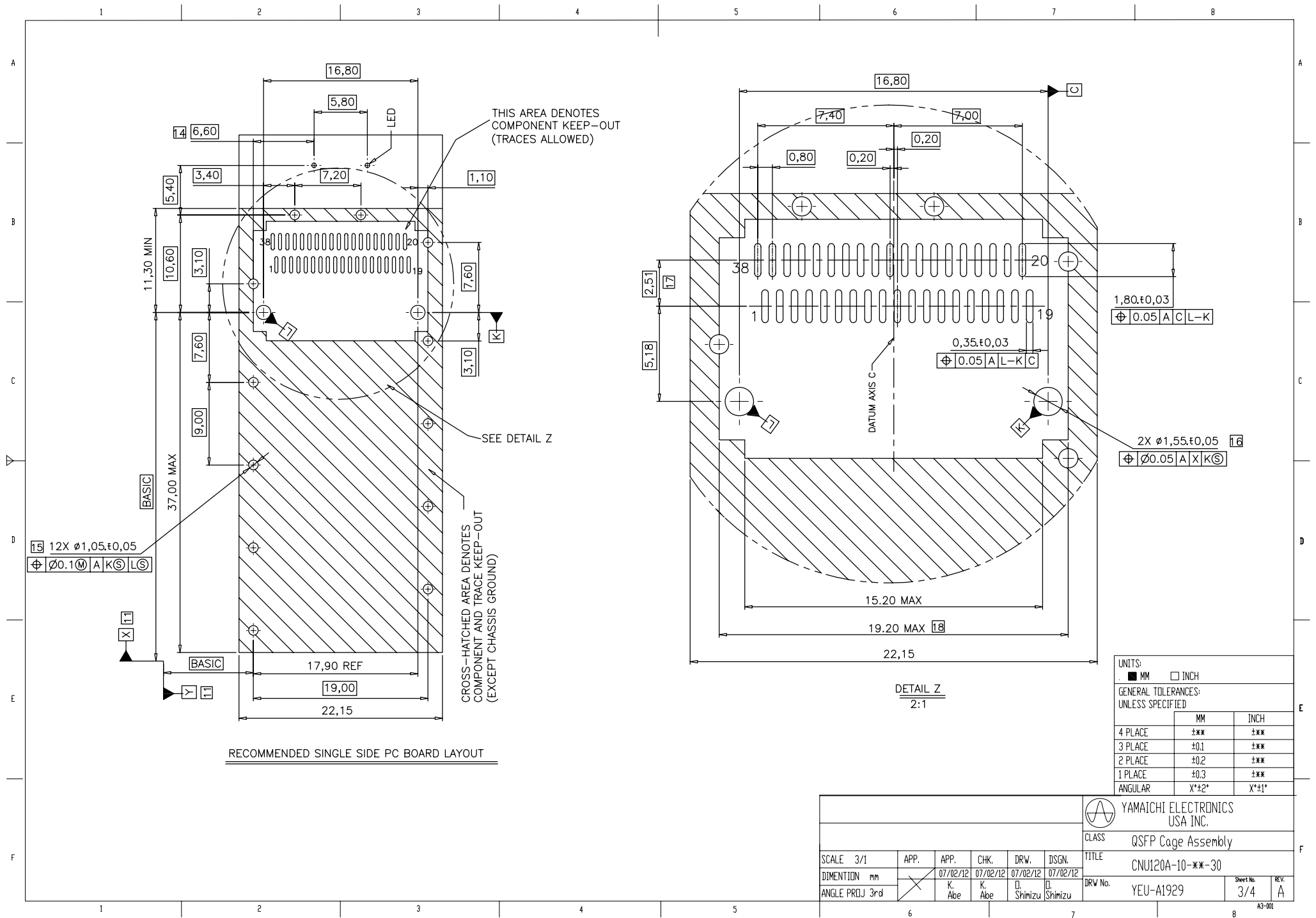


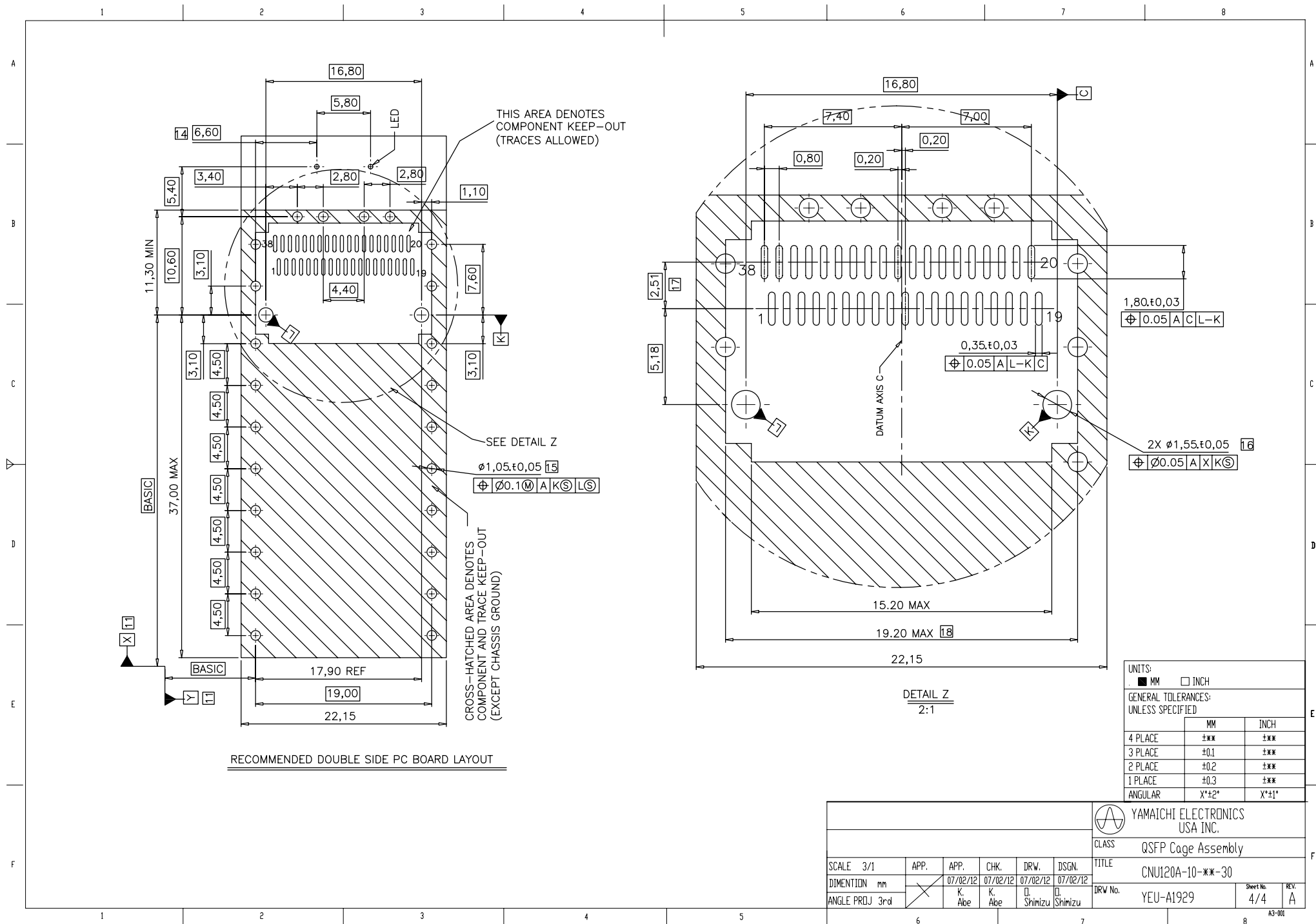
RECOMMENDED DOUBLE SIDE MOUNTING BEZEL DESIGN



UNITS:		
■	MM	□ INCH
GENERAL TOLERANCES: UNLESS SPECIFIED		
	MM	INCH
4 PLACE	±0,1	±0,004
3 PLACE	±0,2	±0,008
2 PLACE	±0,3	±0,012
1 PLACE	±0,5	±0,020
ANGULAR	X°±2°	X°±1°

						YAMAICHI ELECTRONICS USA INC.		
						CLASS	QSFP Cage Assembly	
						TITLE	CNU120A-10-**-30	
						DRW No.	YEU-A1929	REV. A
SCALE 2/1	APP.	APP.	CHK.	DRW.	DSGN.			
DIMENSION mm		07/02/12	07/02/12	07/02/12	07/02/12			
ANGLE PROJ 3rd		K. Abe	K. Abe	Shimizu	Shimizu			





Mouser Electronics

Authorized Distributor

Click to View Pricing, Inventory, Delivery & Lifecycle Information:

[Yamaichi Electronics:](#)

[CNU120A-10-10-30](#) [CNU120A-10-20-30](#) [CNU120A-10-30-30](#) [CNU120A-10-40-30](#)