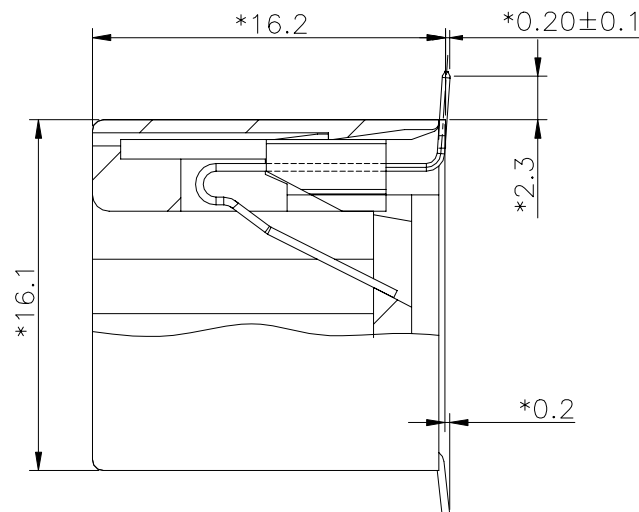
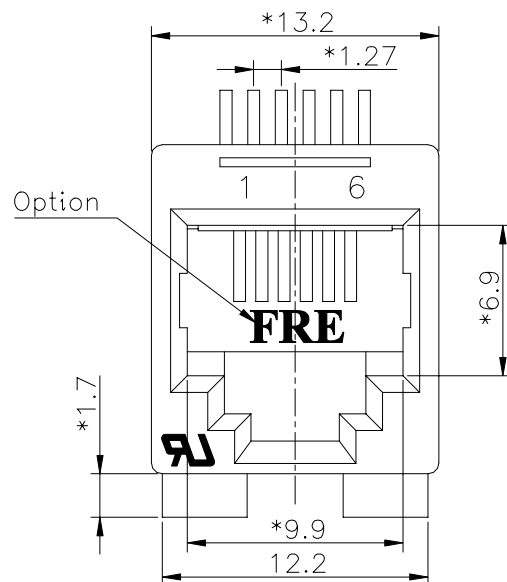


A1RFRD10



REVISION RECORD				
REV	ECO	DESCRIPTION	DRFT	CHKD
1		ADD NEW P/N	JamYin 10/24/05	
2		MODIFY DRAWING	ANKUE 08/15/06	

NOTES:

ELECTRICAL:

1. VOLTAGE RATING : 125 VAC RMS.
2. CURRENT RATING : 1.5 AMP.
3. CONTACT RESISTANCE : 30 MILLIOHMS MAX.
4. INSULATION RESISTANCE: 1000 MEGOHMS MIN @ 500 VDC.
5. DIELECTRIC STRENGTH : 1000 VAC RMS 60Hz, 1MIN.

MECHANICAL:

1. HOUSING MATERIAL : NYLON+GF30% UL94V-0\COLOR:BLACK.
2. CONTACT MATERIAL : PHOSPHOR BRONZE t=0.35mm.
3. PLATING : GOLD PLATING OVER NICKEL.
4. OPERATING LIFE : 750 CYCLES MIN.
5. PCB RETENTION POST-SOLDER: 10 LBS MIN.

ENVIRONMENTAL:

1. STORAGE : -40°C TO +85°C.
2. OPERATION: -40°C TO +85°C.
3. IR REFLOW PEAK SOLDERING TEMPERATURE: 255°C~265°C 5~10 SECONDS.
4. RoHS COMPLIANT.

MATES WITH MODULAR PLUG CONFORMING TO
FCC PART 68, SUBPART F.

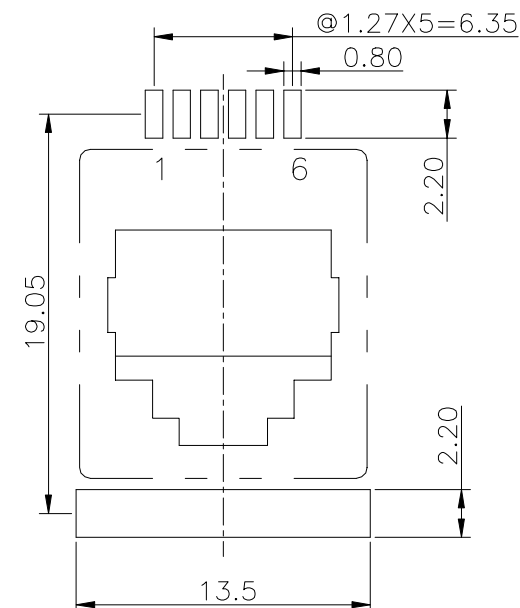
CUL FILE NO. E163191

△ PART NUMBER: E526X-X00XBX-L

2-2C
4-4C
6-6C
3- W/ "FRE" LOGO
R- W/O "FRE" LOGO

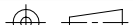
1- 3u" 2- 6u"
3-15u" 4-30u"
5-50u"

7- ARLEN C430NK+GF30%\COLOR:BLACK△
B- NYLON+GF30%\COLOR:BLACK△



PCB LAYOUT (COMPONENT SIDE VIEW)

5-0313-1

DETACHED LISTS	<div>← MM (INCH) →</div>		DFTO ANKUE	DATE 4/21/05'	FULL RISE ELECTRONIC CO., LTD		
	TOLERANCES EXCEPT AS NOTED		CHKD ASKELLY	DATE 2006/8/15			
			MFO	DATE			
			APPVL LUSHENG	DATE 2006/8/15			
	MM		±	TITLE TOP ENTRY PCB JACK 6P SM			
	.0 ± 0.2	±					
	.00 ± 0.15	±					
	.000 ± 0.075	±					
	ANGLES ± 0.5		QT'Y :	DRAWING NO. GE523062-LA		SIZE A3	REV 2
			FINISH :				
		SCALE : 4:1		DO NOT SCALE DRAWING		SHEET 1	OF 1
THIRD ANGLE PROJECTION							



RoHS Compliant

FULL RISE ELECTRONIC CO., LTD

TITLE

TOP ENTRY PCB JACK 6P SMD

DRAWING NO. GE523062-LA

/PART NO. SEE NOTE

SIZE

A3

REV

2

DO NOT SCALE DRAWING

SHEET 1 OF 1

Mouser Electronics

Authorized Distributor

Click to View Pricing, Inventory, Delivery & Lifecycle Information:

Pulse:

[E5266-R00BB2-L](#)