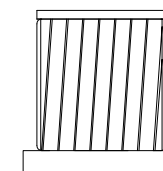
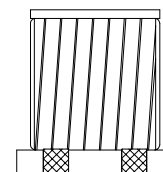
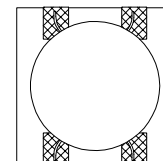


NOTES:

1. ROHS COMPLIANT
2. STORAGE TEMPERATURE: -50°C TO +125°C
3. COMPLIANCE TO J-STD:
 - A. J-STD-002: SOLDERABILITY AT 245°C REFLOW PROFILE
 - B. J-STD-020: LEVEL 1, NO MOISTURE SENSITIVE
 - C. J-STD-075: R7, 245°C MAXIMUM THROUGH REFLOW SOLDER
4. TO ORDER TAPE & REEL PACKAGING ADD A "T" SUFFIX
TO THE PART NUMBER(i.e HM6902NL BECOMES HM6902NLT).



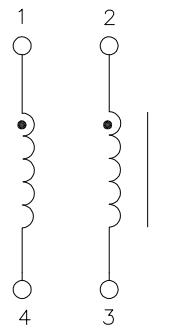
FINAL OUTLINE

© Copyright, 2016. Pulse Electronics Corp. All rights reserved. Pulse confidential & proprietary. (02/26/16)

PRODUCT DESCRIPTION	TLA DRAWING	PS DRAWING	SHEET	PART NO.	DATASHEET REV.
CHOKE,SIN,1GD,1:1,SM,TU	HM6902NL-10	PS-2670.001-C	1 OF 3	HM6902NL	C

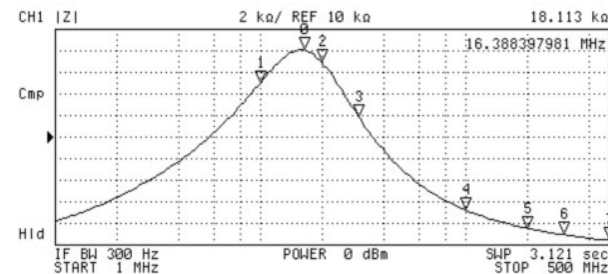
ELECTRICAL CHARACTERISTICS AT +25°C UNLESS OTHER SPECIFIED
MEETS IEEE 802.3 SPECIFICATION

PARAMETER	SPECIFICATIONS
OPERATING TEMPERATURE	-40°C TO +105°C
URNS RATIO	1 : 1 ±3%
POLARITY	PER SCHEMATIC
BETWEEN CHANNEL ISOLATION	500 VRMS MIN @ 60 SECONDS



SCHEMATIC

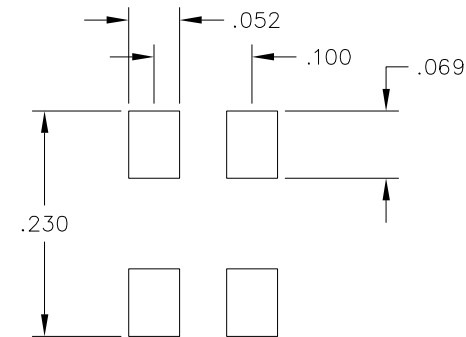
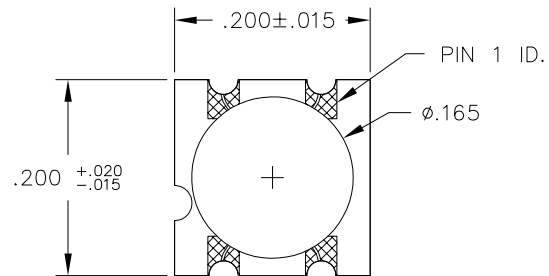
IMPEDANCE (TYP READING) :



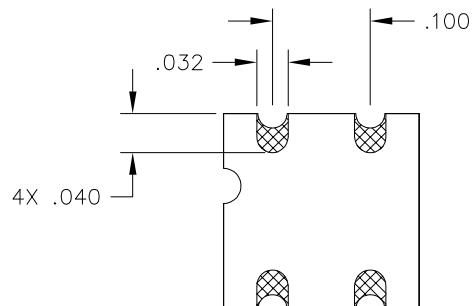
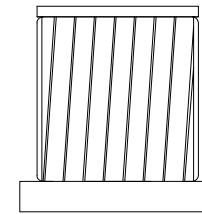
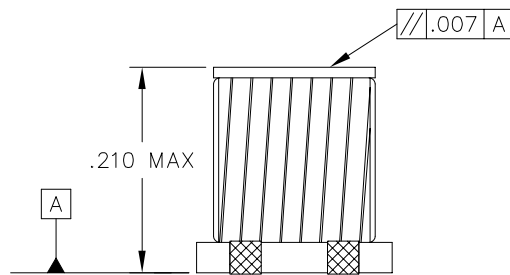
N	SWP PARAM	VAL
0	16.388397981 MHz	18.113 kΩ
1	10 MHz	15.044 kΩ
2	20 MHz	16.985 kΩ
3	30 MHz	11.911 kΩ
4	100 MHz	3.2565 kΩ
5	200 MHz	1.5575 kΩ
6	300 MHz	987.9 Ω
7	500 MHz	536.49 Ω

© Copyright, 2016. Pulse Electronics Corp. All rights reserved. Pulse confidential & proprietary. (02/26/16)

PRODUCT DESCRIPTION	TLA DRAWING	PS DRAWING	SHEET	PART NO.	DATASHEET REV.
CHOKE,SIN,1GD,1:1,SM,TU	HM6902NL-10	PS-2670.001-C	2 OF 3	HM6902NL	C



SUGGESTED LAND PATTERN



DIMENSIONS ARE IN INCHES WITH THE FOLLOWING
TOLERANCES:
.XX = ±.01
.XXX = ±.005

© Copyright, 2016. Pulse Electronics Corp. All rights reserved. Pulse confidential & proprietary. (02/26/16)

PRODUCT DESCRIPTION	TLA DRAWING	PS DRAWING	SHEET	PART NO.	DATASHEET REV.
CHOKE,SIN,1GD,1:1,SM,TU	HM6902NL-10	PS-2670.001-C	3 OF 3	HM6902NL	C

Mouser Electronics

Authorized Distributor

Click to View Pricing, Inventory, Delivery & Lifecycle Information:

Pulse:

[HM6902NL](#)