

Description: 2012 2.4G&5GHz Diplexer
PART NUMBER: DPX2012LL76R2455A
Features:

- Compact size : 2.0x1.2x0.5mm
- RoHS compliant

Applications:

- WLAN, 802.11a/b/g/n
- ISM Band

ELECTRICAL SPECIFICATIONS

DESCRIPTION	VALUE	
Pass Band	Low Band	High Band
	2400~2500MHz	4900~5950MHz
Insertion loss	0.65dB (Max)	0.65dB (Max)
V.S.W.R	2.0(Max)	2.0(Max)
/Return-Loss	/10.0dB(Min)	/10.0dB(Min)
Attenuation	20dB(Min). @4800~5000MHz 20dB(Min). @7200~7500MHz	20dB (Min). @824~915 MHz 20dB (Min). @1800~2500 MHz 15dB (Min). @9800~11900 MHz
Operating Temperature	-40 ~ 85°C	

In the effort to improve our products, we reserve the right to make changes judged to be necessary.

CONFIDENTIAL AND PROPRIETARY INFORMATION

This document contains confidential and proprietary information of Pulse Electronics, Inc. (Pulse) and is protected by copyright, trade secret and other state and federal laws. Its receipt or possession does not convey any rights to reproduce, disclose its contents, or to manufacture, use or sell anything it may describe. Reproduction, disclosure or use without specific written authorization of Pulse is strictly forbidden.

For more information:



Pulse Worldwide Headquarters
 15255 Innovation Drive #100
 San Diego, CA 92128
 USA
 Tel: 1-858-674-8100

Pulse/Larsen Antennas
 18110 SE 34th St Bldg 2 Suite 250
 Vancouver, WA 98683
 USA
 Tel: 1-360-944-7551

Europe Headquarters
 Pulse GmbH & Co, KG
 Zeppelinstrasse 15
 Herrenberg, Germany
 Tel: 49 7032 7806 0

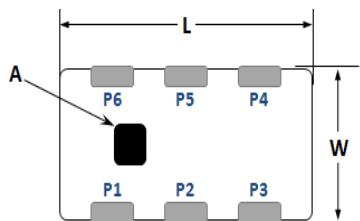
Pulse (Suzhou) Wireless Products Co, Inc.
 99 Huo Ju Road(#29 Bldg, 4th Phase
 Suzhou New District
 Jiangsu Province, Suzhou 215009 PR China
 Tel: 86 512 6807 9998

Description: 2012 2.4G&5GHz Diplexer

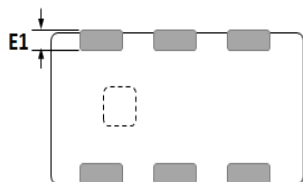
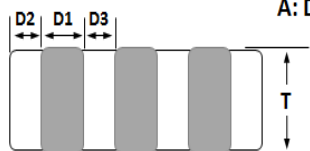
PART NUMBER: DPX2012LL76R2455A

MECHANICAL DIMENSION

Outline



A: Directional Mark



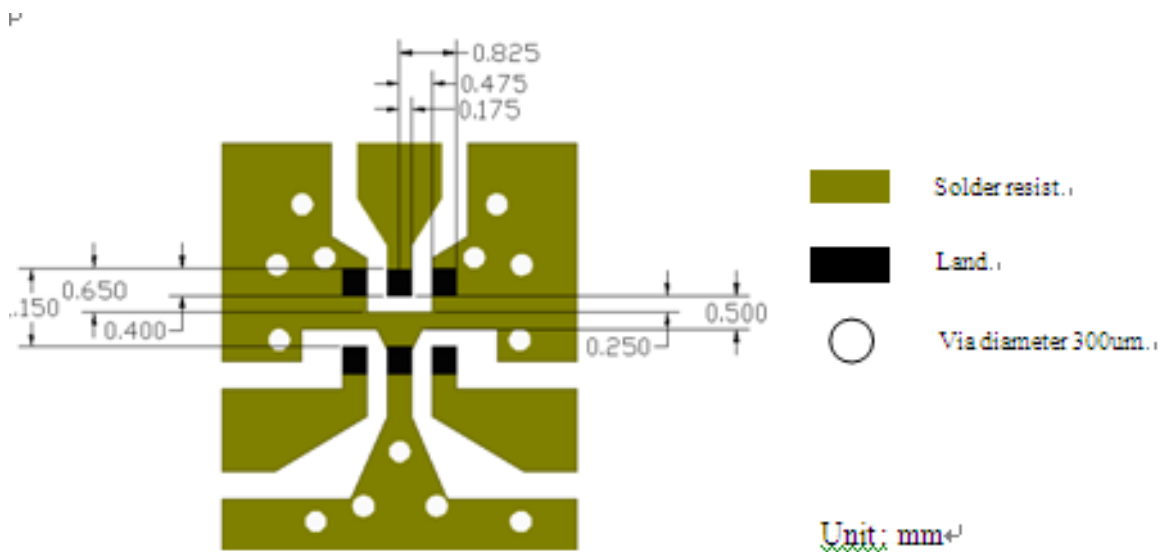
Termination

Terminal name	Function
P1	GND
P2	Common
P3	GND
P4	High band
P5	GND
P6	Low band

Mechanical

	Dimension
L (mm)	2.00 ± 0.15
W (mm)	1.25 ± 0.15
T (mm)	0.50 ± 0.15
P1 (mm)	0.35 ± 0.15
P2 (mm)	0.35 ± 0.15
P3 (mm)	0.35 ± 0.15
P4 (mm)	0.35 ± 0.15
P5 (mm)	0.35 ± 0.15
P6 (mm)	0.35 ± 0.15
D1 (mm)	0.35 ± 0.15
D2 (mm)	0.175 ± 0.15
D3 (mm)	0.3 ± 0.15
E1 (mm)	0.25 ± 0.15

Reference design of EVB



Line width should be designed to match 50Ω characteristic impedance, depending on PCB material and thickness.

In the effort to improve our products, we reserve the right to make changes judged to be necessary.

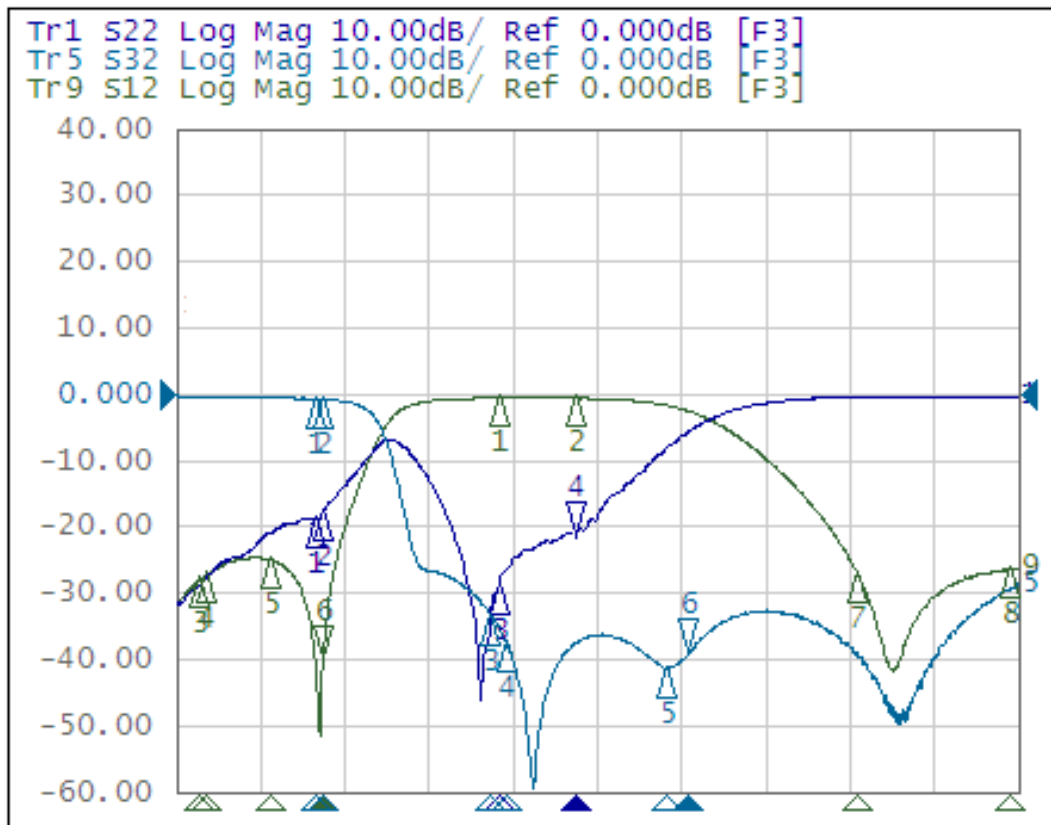
CONFIDENTIAL AND PROPRIETARY INFORMATION

This document contains confidential and proprietary information of Pulse Electronics, Inc. (Pulse) and is protected by copyright, trade secret and other state and federal laws. Its receipt or possession does not convey any rights to reproduce, disclose its contents, or to manufacture, use or sell anything it may describe. Reproduction, disclosure or use without specific written authorization of Pulse is strictly forbidden.

Description: 2012 2.4G&5GHz Diplexer

PART NUMBER: DPX2012LL76R2455A

ELECTRICAL PERFORMANCES



- Measured on Agilent E5071C Network Analyzer
- Common port: Port 2 (Return loss S22)
- Low band port: Port 3 (Low band insertion loss S32, and attenuation at high band)
- High band port: Port 1 (High band insertion loss S12, and attenuation at low band)

Frequency Characteristics

Description: 2012 2.4G&5GHz Diplexer

PART NUMBER: DPX2012LL76R2455A

REVISION HISTORY

Revision	Date	Description
Version 1	Oct. 06, 2020	- New issue

Mouser Electronics

Authorized Distributor

Click to View Pricing, Inventory, Delivery & Lifecycle Information:

Pulse:

[DPX2012LL76R2455A](#)