

## Description: 1608 Diplexer

**PART NUMBER: DPX1608LKG2R2460A**

### Features:

- Compact Size
- Low loss
- High Soldering Heat Resistance

### Applications:

- WiFi 6E
- Combination of 2.4GHz BPF and 5GHz BPF

## ELECTRICAL SPECIFICATIONS

### Low-Band

Item	Frequency Range (MHz)	Min.	Typ.	Max.
Insertion loss (dB)	2400~2500	-	0.88	1.05
Return loss (dB)	2400~2500	11	13.82	-
Attenuation (dB)	30~1200	6	7.19	-
	4800~5000	26	28.74	-
	5150~7125	28	30.25	-
	7200~7500	30	33.49	-

### High-Band

Item	Frequency Range (MHz)	Min.	Typ.	Max.
Insertion loss (dB)	5150~5875	-	0.82	1.15
	5875~7125	-	0.82	1.15
Return loss (dB)	5150~7125	10	13.72	-
Attenuation (dB)	2400~2500	28	30.45	-
	10300~14250	27	31.50	-
	15450~21375	25	30.70	-

In the effort to improve our products, we reserve the right to make changes judged to be necessary.

CONFIDENTIAL AND PROPRIETARY INFORMATION

This document contains confidential and proprietary information of Pulse Electronics, Inc. (Pulse) and is protected by copyright, trade secret and other state and federal laws. Its receipt or possession does not convey any rights to reproduce, disclose its contents, or to manufacture, use or sell anything it may describe. Reproduction, disclosure or use without specific written authorization of Pulse is strictly forbidden.

For more information:

Pulse Worldwide Headquarters  
15255 Innovation Drive #100  
San Diego, CA 92128  
USA  
Tel: 1-858-674-8100

Pulse/Larsen Antennas  
18110 SE 34<sup>th</sup> St Bldg 2 Suite 250  
Vancouver, WA 98683  
USA  
Tel: 1-360-944-7551

Europe Headquarters  
Pulse GmbH & Co, KG  
Zeppelinstrasse 15  
Herrenberg, Germany  
Tel: 49 7032 7806 0

Pulse (Suzhou) Wireless Products Co, Inc.  
99 Huo Ju Road(#29 Bldg, 4<sup>th</sup> Phase  
Suzhou New District  
Jiangsu Province, Suzhou 215009 PR China  
Tel: 86 512 6807 9998



**Description: 1608 Diplexer****PART NUMBER: DPX1608LKG2R2460A****ELECTRICAL SPECIFICATIONS****Common**

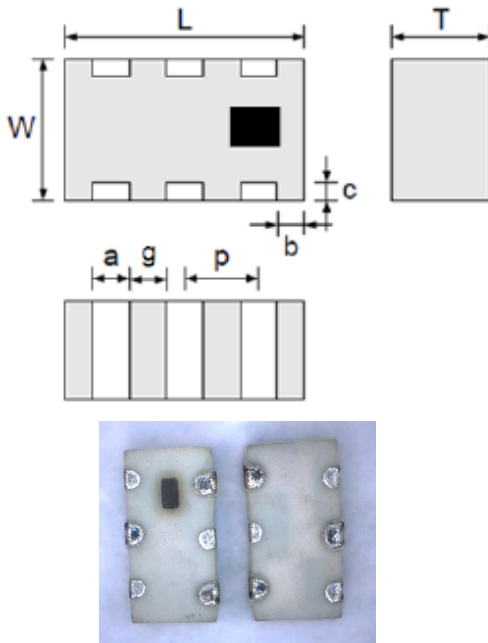
Item	Frequency Range (MHz)	Min.	Typ.	Max.
Return loss (dB)	2400~2500	11	13.82	-
	5150~7125	10	13.72	-

**Isolation**

Item	Frequency Range (MHz)	Min.	Typ.	Max.
Isolation (dB)	2400~2500	30	33.77	-
	5150~7125	26	28.01	-

Operating Temperature Range : -40~85°C

Power Capacity : 3W max.

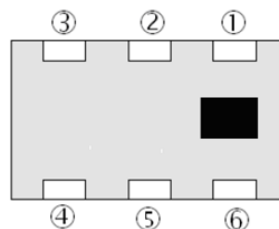
**Description: 1608 Diplexer**
**PART NUMBER: DPX1608LKG2R2460A**
**MECHANICAL DIMENSION**
**Outline**

**Dimension**

L	W	T	a
1.60±0.10	0.80±0.10	0.70 max.	0.20±0.10
b	c	g	p
0.20±0.15	0.15±0.10	0.30±0.10	0.50±0.05

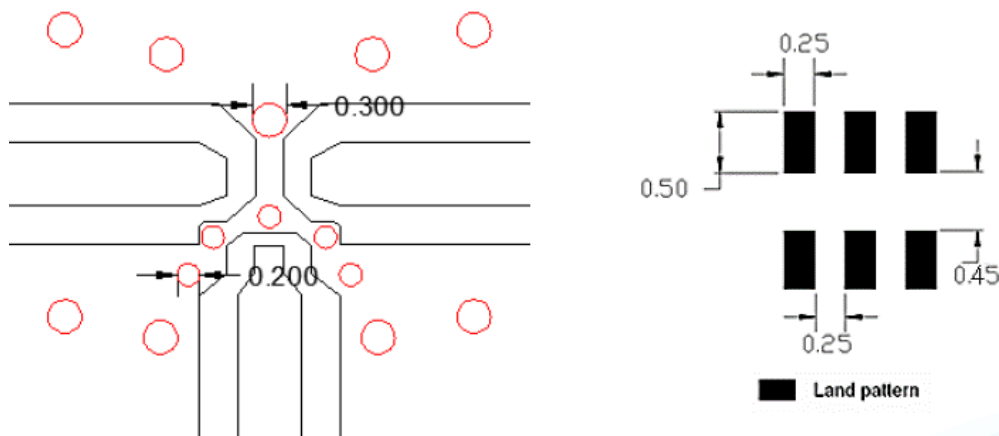
NOTE : Dimensions in mm.

**Termination**

Top View


**Terminal name**
**Function**

1	High band
2	GND
3	Low band
4	GND
5	Common
6	GND

**Reference design of EVB**


Unit : mm

Line width should be designed to match 50Ω characteristic impedance, depending on PCB material and thickness.

In the effort to improve our products, we reserve the right to make changes judged to be necessary.

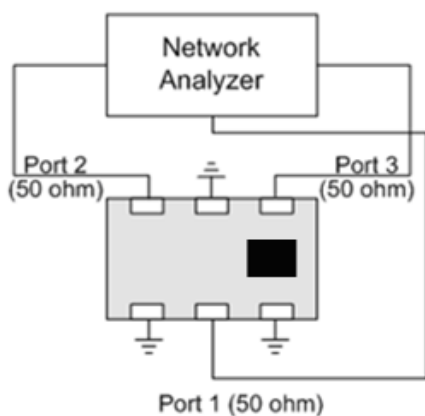
CONFIDENTIAL AND PROPRIETARY INFORMATION

This document contains confidential and proprietary information of Pulse Electronics, Inc. (Pulse) and is protected by copyright, trade secret and other state and federal laws. Its receipt or possession does not convey any rights to reproduce, disclose its contents, or to manufacture, use or sell anything it may describe. Reproduction, disclosure or use without specific written authorization of Pulse is strictly forbidden.

## Description: 1608 Diplexer

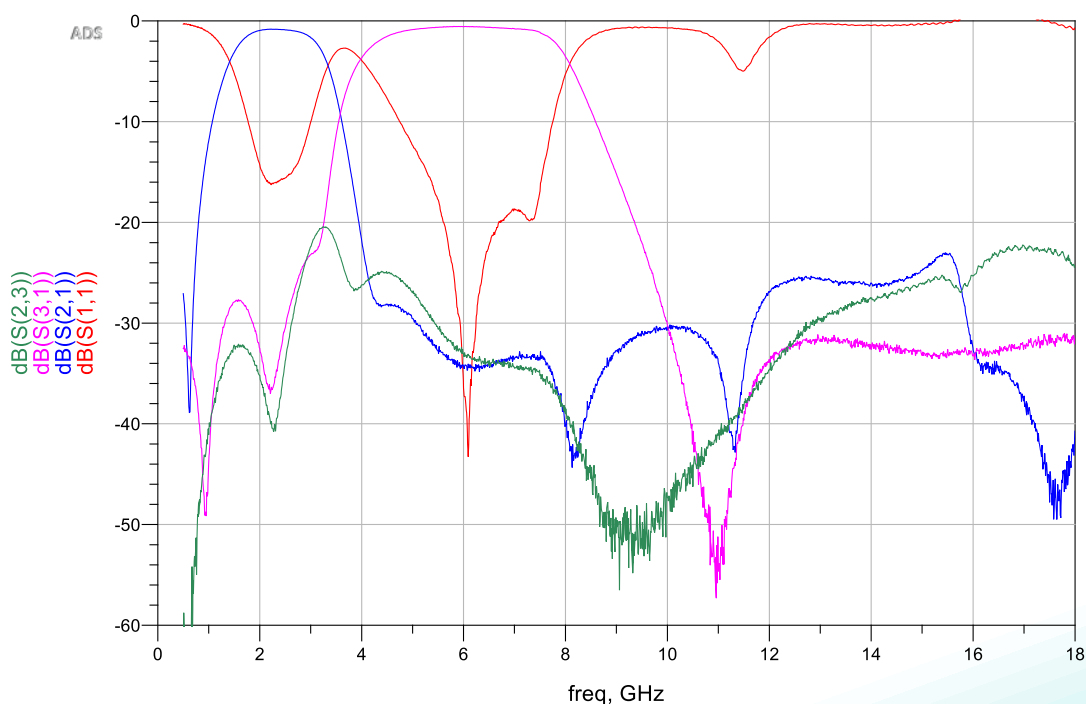
**PART NUMBER: DPX1608LKG2R2460A**

### MEASURING DIAGRAM



Test Instrument :  
Agilent E5071C Network Analyzer or equivalent.

### ELECTRICAL PERFORMANCES



In the effort to improve our products, we reserve the right to make changes judged to be necessary.

CONFIDENTIAL AND PROPRIETARY INFORMATION

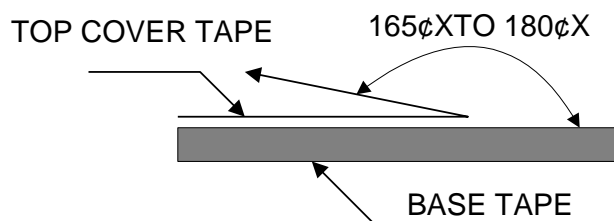
This document contains confidential and proprietary information of Pulse Electronics, Inc. (Pulse) and is protected by copyright, trade secret and other state and federal laws. Its receipt or possession does not convey any rights to reproduce, disclose its contents, or to manufacture, use or sell anything it may describe. Reproduction, disclosure or use without specific written authorization of Pulse is strictly forbidden.

## Description: 1608 Diplexer

### PART NUMBER: DPX1608LKG2R2460A

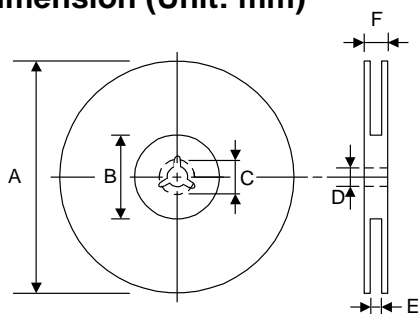
## PACKING SPECIFICATION

### Peel-off force



The force for peeling of cover tape is 10 grams in the arrow direction.

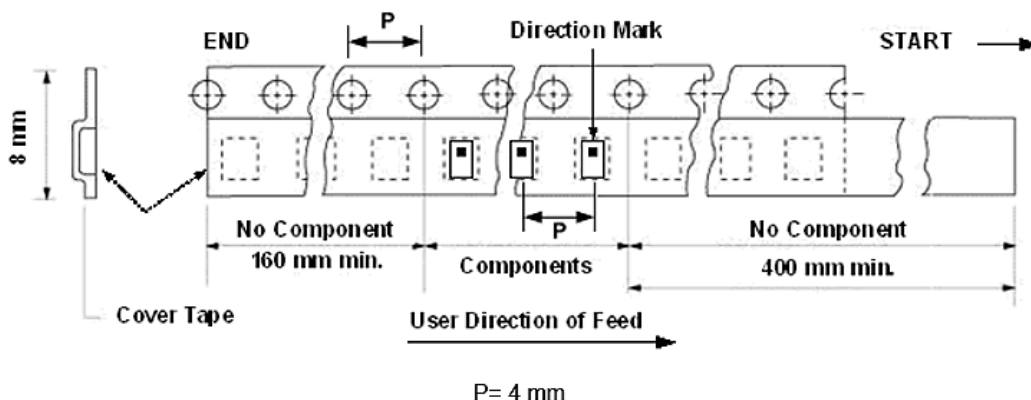
### Dimension (Unit: mm)



TYPE	A	B	C	D	E	F
8 mm	178±1	60+0.5 -0	-	13±0.2	9±0.5	12±0.5
12 mm	178±0.3	60±0.2	19.3±0.1	13.5±0.1	13.6±0.1	-

### Taping quantity

SERIES	5824 5724	5320 5220	4532	4516	3225	3216 2520	2012 1608	1005 0605
PCS/Reel	5000	3000	1000	2000	2500	3000	4000	10000



In the effort to improve our products, we reserve the right to make changes judged to be necessary.

CONFIDENTIAL AND PROPRIETARY INFORMATION

This document contains confidential and proprietary information of Pulse Electronics, Inc. (Pulse) and is protected by copyright, trade secret and other state and federal laws. Its receipt or possession does not convey any rights to reproduce, disclose its contents, or to manufacture, use or sell anything it may describe. Reproduction, disclosure or use without specific written authorization of Pulse is strictly forbidden.

**Description:** 1608 Diplexer**PART NUMBER:** DPX1608LKG2R2460A**REVISION HISTORY**

Revision	Date	Description
Version 1	Apr. 13, 2022	- New issue

# Mouser Electronics

Authorized Distributor

Click to View Pricing, Inventory, Delivery & Lifecycle Information:

[Pulse:](#)

[DPX1608LKG2R2460A](#)