

**Description: 1608 Diplexer****PART NUMBER: DPX1608LKF3R2460A****Features:**

- Compact Size
- Low loss
- High Soldering Heat Resistance

**Applications:**

- WLAN

**ELECTRICAL SPECIFICATIONS****Low-Band**

Item	Frequency Range (MHz)	Min.	Typ.	Max.
Insertion loss (dB)	2400~2500	-	0.74	0.85
Insertion Loss (dB) at -40~85°C	2400~2500	-	-	1.00
Return loss (dB)	2400~2500	13	20.7	-
Attenuation (dB)	30~1000	12	15.1	-
	4800~5000	35	40.6	-
	5000~7125	30	36.9	-
	7200~7500	35	46.4	-
	7500~12000	18	20.3	-

In the effort to improve our products, we reserve the right to make changes judged to be necessary.

**CONFIDENTIAL AND PROPRIETARY INFORMATION**

This document contains confidential and proprietary information of Pulse Electronics, Inc. (Pulse) and is protected by copyright, trade secret and other state and federal laws. Its receipt or possession does not convey any rights to reproduce, disclose its contents, or to manufacture, use or sell anything it may describe. Reproduction, disclosure or use without specific written authorization of Pulse is strictly forbidden.

For more information:

Pulse Worldwide Headquarters  
15255 Innovation Drive #100  
San Diego, CA 92128  
USA  
Tel: 1-858-674-8100

Pulse/Larsen Antennas  
18110 SE 34<sup>th</sup> St Bldg 2 Suite 250  
Vancouver, WA 98683  
USA  
Tel: 1-360-944-7551

Europe Headquarters  
Pulse GmbH & Do, KG  
Zeppelinstrasse 15  
Herrenberg, Germany  
Tel: 49 7032 7806 0

Pulse (Suzhou) Wireless Products Co, Inc.  
99 Huo Ju Road(#29 Bldg, 4<sup>th</sup> Phase  
Suzhou New District  
Jiangsu Province, Suzhou 215009 PR China  
Tel: 86 512 6807 9998



**Description: 1608 Diplexer**

**PART NUMBER: DPX1608LKF3R2460A**

**ELECTRICAL SPECIFICATIONS**

**High-Band**

Item	Frequency Range (MHz)	Min.	Typ.	Max.
Insertion loss (dB)	4900~5150	-	0.95	1.20
	5150~6300	-	0.78	1.00
Insertion loss (dB) at -40~85°C	4900~5150	-	-	1.35
	5150~6300	-	-	1.15
Return loss (dB)	4900~6300	11	16.5	-
Attenuation (dB)	70~1000	40	52.7	-
	1000~2400	40	48.0	-
	2400~2500	35	48.0	-
	9800~10300	30	36.3	-
	10300~12700	30	36.3	-
	14700~18900	12	16.3	-

**Common**

Item	Frequency Range (MHz)	Min.	Typ.	Max.
Return loss (dB)	2400~2500	13	17.8	-
	4900~6300	11	17.2	-

**Isolation**

Item	Frequency Range (MHz)	Min.	Typ.	Max.
HB to LB (dB)	2400~2500	35	44.8	-
	4800~5150	30	38.6	-
	5150~5950	30	36.5	-
	5950~6300	30	37.5	-
	11900~14250	15	19.2	-
	15000~18000	15	18.7	-

\*Impedance for port1 = Match to client's chipset

Operating Temperature Range : -40~85°C

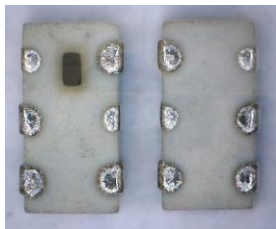
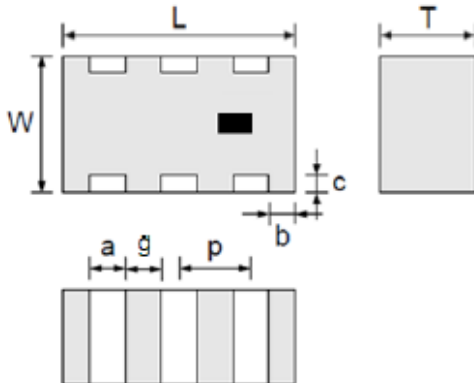
Power Capacity : 3W max.

## Description: 1608 Diplexer

**PART NUMBER: DPX1608LKF3R2460A**

### MECHANICAL DIMENSION

#### Outline



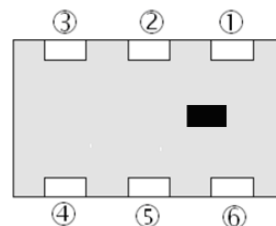
#### Dimension

L	W	T	a
1.60±0.10	0.80±0.10	0.70 max.	0.20±0.10
b	c	g	p
0.20±0.15	0.15±0.10	0.30±0.10	0.50±0.05

NOTE : Dimensions in mm.

#### Termination

Top View

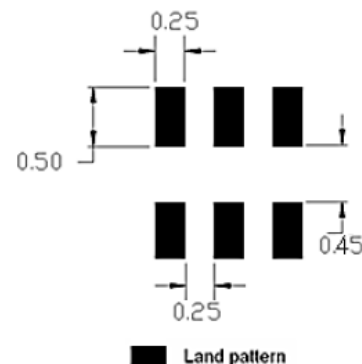
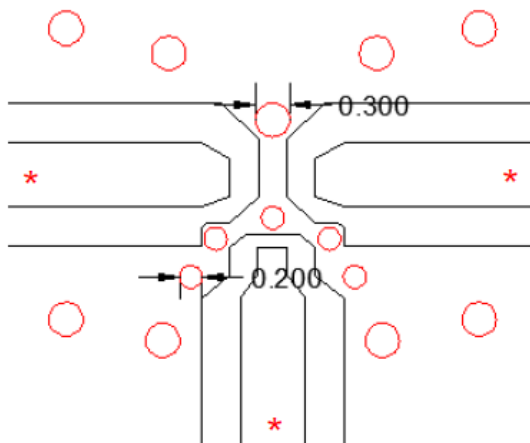


#### Terminal name

#### Function

1	Low band
2	GND
3	High band
4	GND
5	Common
6	GND

### Reference design of EVB



Unit : mm

Line width should be designed to match 50Ω characteristic impedance, depending on PCB material and thickness.

In the effort to improve our products, we reserve the right to make changes judged to be necessary.

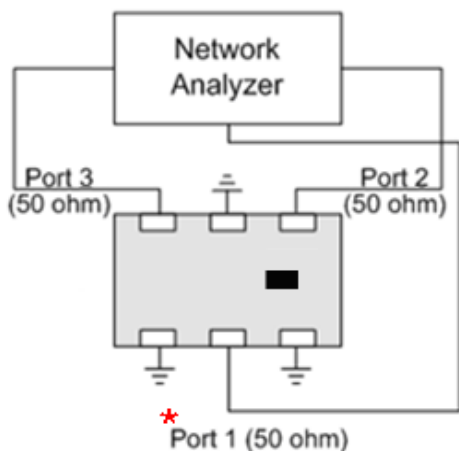
CONFIDENTIAL AND PROPRIETARY INFORMATION

This document contains confidential and proprietary information of Pulse Electronics, Inc. (Pulse) and is protected by copyright, trade secret and other state and federal laws. Its receipt or possession does not convey any rights to reproduce, disclose its contents, or to manufacture, use or sell anything it may describe. Reproduction, disclosure or use without specific written authorization of Pulse is strictly forbidden.

## Description: 1608 Diplexer

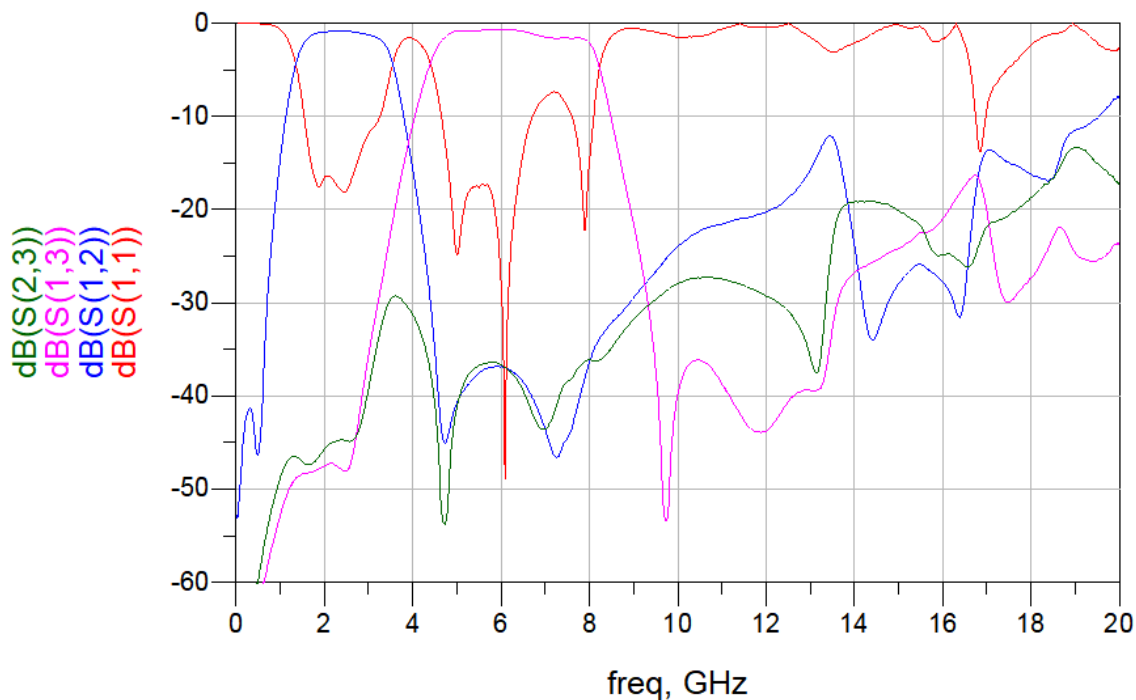
### PART NUMBER: DPX1608LKF3R2460A

### MEASURING DIAGRAM



Test Instrument :  
Agilent E5071C Network Analyzer or equivalent.  
\*Impedance for port1 = Match to client's chipset

### ELECTRICAL PERFORMANCES

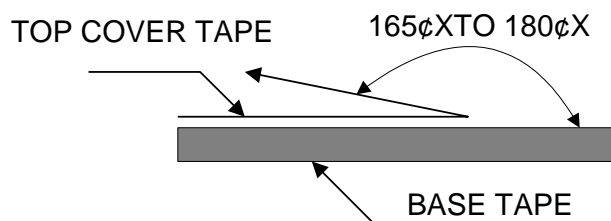


## Description: 1608 Diplexer

**PART NUMBER: DPX1608LKF3R2460A**

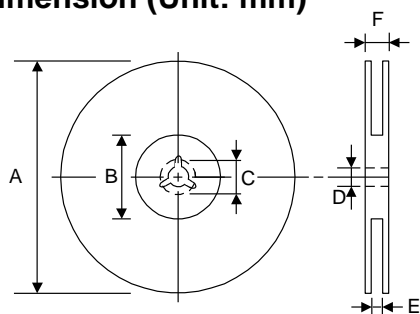
### PACKING SPECIFICATION

#### Peel-off force



The force for peeling of cover tape is 10 grams in the arrow direction.

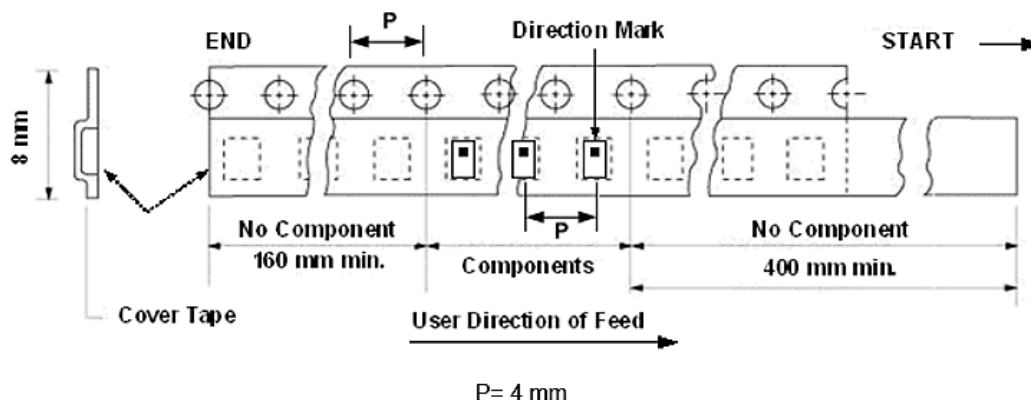
#### Dimension (Unit: mm)



TYPE	A	B	C	D	E	F
8 mm	178±1	60+0.5 -0	-	13±0.2	9±0.5	12±0.5
12 mm	178±0.3	60±0.2	19.3±0.1	13.5±0.1	13.6±0.1	-

#### Taping quantity

SERIES	5824 5724	5320 5220	4532	4516	3225	3216 2520	2012 1608	1005 0605
PCS/Reel	5000	3000	1000	2000	2500	3000	4000	10000



In the effort to improve our products, we reserve the right to make changes judged to be necessary.

CONFIDENTIAL AND PROPRIETARY INFORMATION

This document contains confidential and proprietary information of Pulse Electronics, Inc. (Pulse) and is protected by copyright, trade secret and other state and federal laws. Its receipt or possession does not convey any rights to reproduce, disclose its contents, or to manufacture, use or sell anything it may describe. Reproduction, disclosure or use without specific written authorization of Pulse is strictly forbidden.

**Description:** 1608 Diplexer**PART NUMBER:** DPX1608LKF3R2460A**REVISION HISTORY**

Revision	Date	Description
Version 1	Apr. 13, 2022	- New issue

# Mouser Electronics

Authorized Distributor

Click to View Pricing, Inventory, Delivery & Lifecycle Information:

[Pulse:](#)

[DPX1608LKF3R2460A](#)