

**Description: 1608 Diplexer****PART NUMBER: DPX1608LKEFR2460L****Features:**

- Compact Size
- Low loss
- High Soldering Heat Resistance

**Applications:**

- WiFi

**ELECTRICAL SPECIFICATIONS****Low-Band**

Item	Frequency Range(MHz)	Min.	Typ.	Max.
Insertion Loss (dB)	2400~2500	-	0.74	0.85
Insertion Loss(dB) at -40~85°C	2400~2500	-	-	1.05
Return Loss (dB)	2400~2500	13	18.8	-
Attenuation (dB)	100~1000	9	11.5	-
	4800~7125	30	34	-
	7200~7500	30	33.5	-
	7500~12000	20	34	-

In the effort to improve our products, we reserve the right to make changes judged to be necessary.

**CONFIDENTIAL AND PROPRIETARY INFORMATION**

This document contains confidential and proprietary information of Pulse Electronics, Inc. (Pulse) and is protected by copyright, trade secret and other state and federal laws. Its receipt or possession does not convey any rights to reproduce, disclose its contents, or to manufacture, use or sell anything it may describe. Reproduction, disclosure or use without specific written authorization of Pulse is strictly forbidden.

For more information:

Pulse Worldwide Headquarters  
15255 Innovation Drive #100  
San Diego, CA 92128  
USA  
Tel:1-858-674-8100

Pulse/Larsen Antennas  
18110 SE 34<sup>th</sup> St Bldg 2 Suite 250  
Vancouver, WA 98683  
USA  
Tel: 1-360-944-7551

Europe Headquarters  
Pulse GmbH & Do, KG  
Zeppelinstrasse 15  
Herrenberg, Germany  
Tel: 49 7032 7806 0

Pulse (Suzhou) Wireless Products Co, Inc.  
99 Huo Ju Road(#29 Bldg,4<sup>th</sup> Phase  
Suzhou New District  
Jiangsu Province, Suzhou 215009 PR China  
Tel: 86 512 6807 9998



Description: 1608 Diplexer

PART NUMBER: DPX1608LKEFR2460L

**ELECTRICAL SPECIFICATIONS**

**High-Band**

Item	Frequency Range(MHz)	Min.	Typ.	Max.
Insertion Loss (dB)	5170~5875	-	0.78	1.05
	5875~7125	-	0.76	1.05
Insertion Loss (dB) at -40~85°C	5170~5875	-	-	1.30
	5875~7125	-	-	1.30
Return Loss (dB)	5170~7125	11	15.4	-
Attenuation (dB)	100~1000	35	42.5	-
	1000~2400	30	35.5	-
	2400~2500	38	42.5	-
	2500~3500	10	13.5	-
	10340~14250	22	28.5	-
	15510~17625	27	38.5	-
	17625~21375	22	30.0	-

**Common**

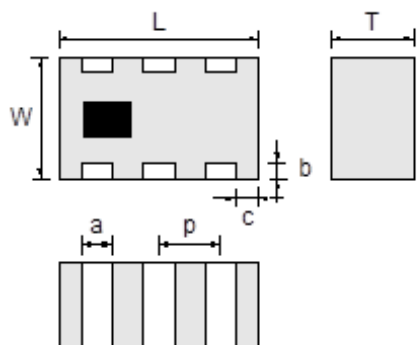
Item	Frequency Range(MHz)	Min.	Typ.	Max.
Return Loss (dB)	2400~2500	13	19.6	-
	5150~7125	11	15.6	-

**Isolation**

Item	Frequency Range(MHz)	Min.	Typ.	Max.
HB to LB (dB)	2400~2500	38	43	-
	4800~7125	25	32.5	-

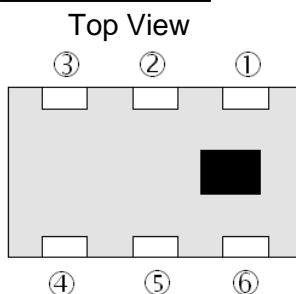
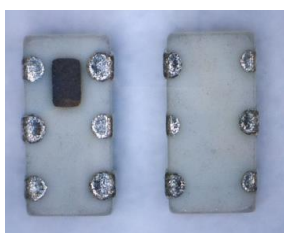
Operating Temperature Range : -40~85°C

Power Capacity : 3W max.

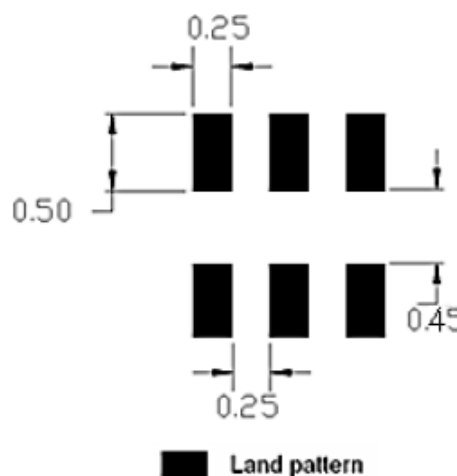
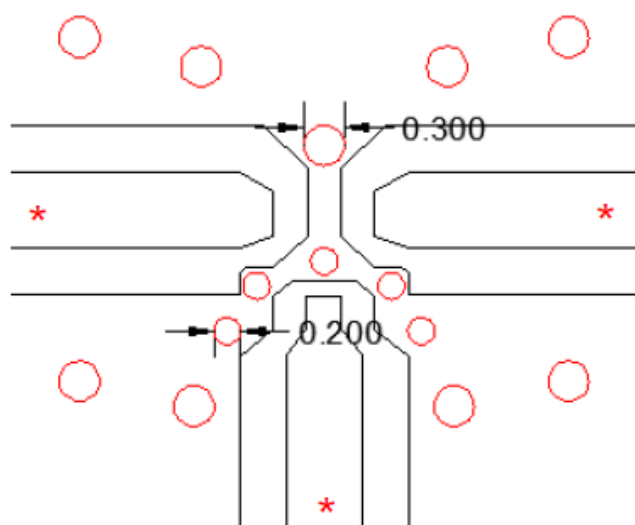
**Description: 1608 Diplexer**
**PART NUMBER: DPX1608LKEFR2460L**
**MECHANICAL DIMENSION**
**Outline**

**Dimension**

L	W	T	a
1.60±0.15	0.80±0.10	0.65 max.	0.20±0.10
b	c	p	
0.15±0.10	0.20±0.15	0.50±0.05	

NOTE : Dimensions in mm.

**Termination**


Terminal name	Function
1	High band
2	GND
3	Low band
4	GND
5	Common
6	GND

**Reference design of EVB**


Unit : mm

\*Line width should be designed to match 50Ω characteristic impedance, depending on PCB material and thickness.

In the effort to improve our products, we reserve the right to make changes judged to be necessary.

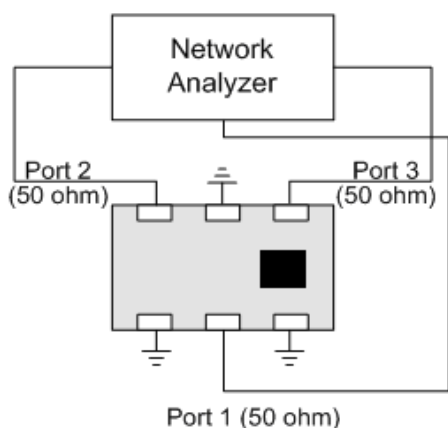
CONFIDENTIAL AND PROPRIETARY INFORMATION

This document contains confidential and proprietary information of Pulse Electronics, Inc. (Pulse) and is protected by copyright, trade secret and other state and federal laws. Its receipt or possession does not convey any rights to reproduce, disclose its contents, or to manufacture, use or sell anything it may describe. Reproduction, disclosure or use without specific written authorization of Pulse is strictly forbidden.

## Description: 1608 Diplexer

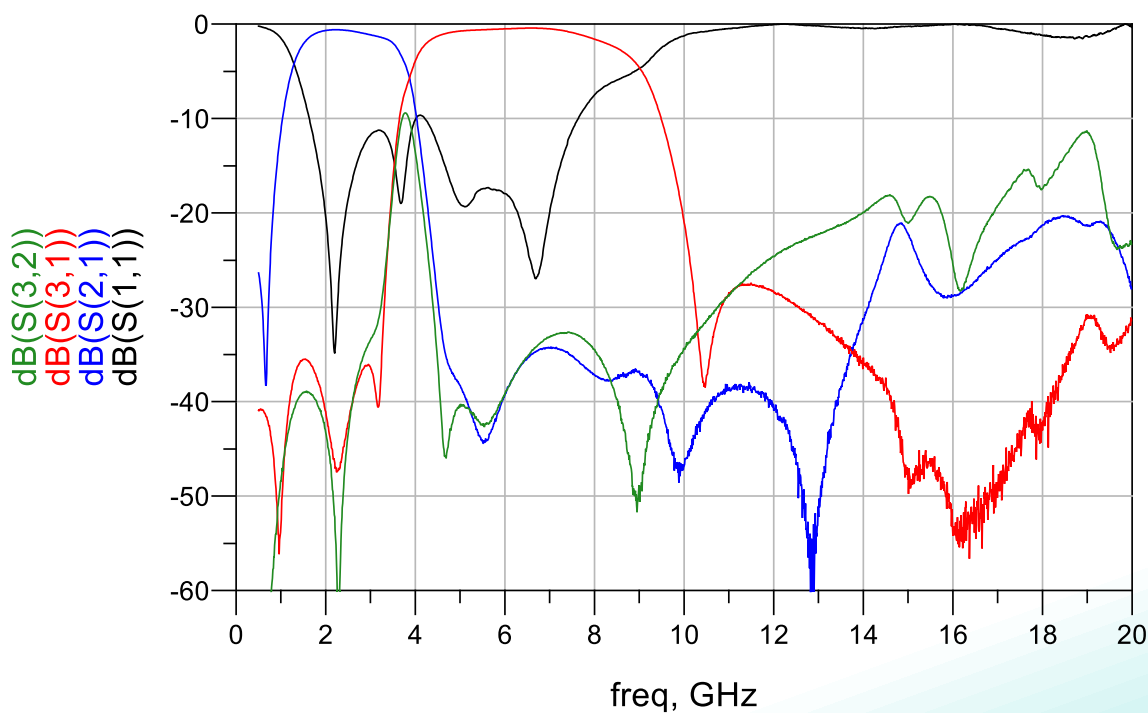
### PART NUMBER: DPX1608LKEFR2460L

### MEASURING DIAGRAM



Test Instrument :  
Agilent E5071C Network Analyzer or equivalent.

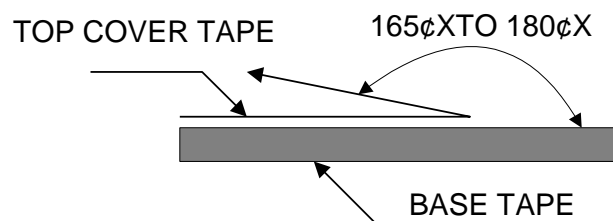
### ELECTRICAL PERFORMANCES



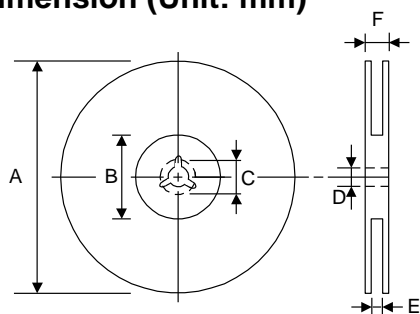
In the effort to improve our products, we reserve the right to make changes judged to be necessary.

CONFIDENTIAL AND PROPRIETARY INFORMATION

This document contains confidential and proprietary information of Pulse Electronics, Inc. (Pulse) and is protected by copyright, trade secret and other state and federal laws. Its receipt or possession does not convey any rights to reproduce, disclose its contents, or to manufacture, use or sell anything it may describe. Reproduction, disclosure or use without specific written authorization of Pulse is strictly forbidden.

**Description: 1608 Diplexer**
**PART NUMBER: DPX1608LKEFR2460L**
**PACKING SPECIFICATION**
**Peel-off force**


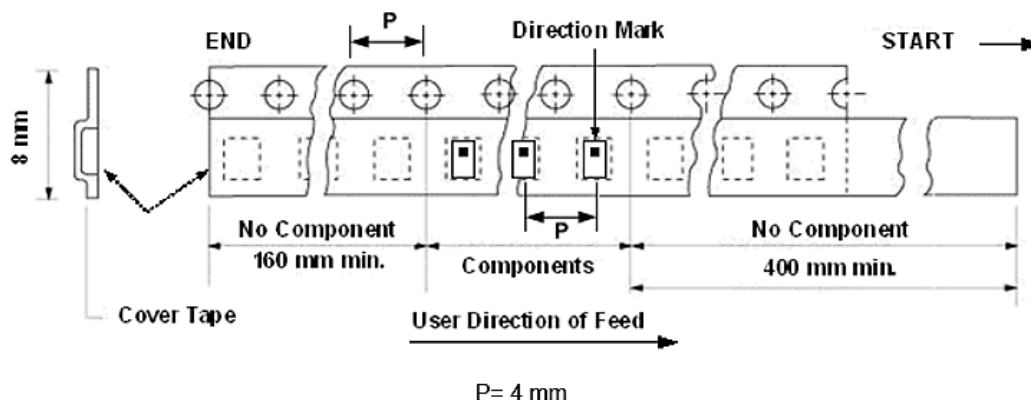
The force for peeling of cover tape is 10 grams in the arrow direction.

**Dimension (Unit: mm)**


TYPE	A	B	C	D	E	F
8 mm	178±1	60+0.5 -0	-	13±0.2	9±0.5	12±0.5
12 mm	178±0.3	60±0.2	19.3±0.1	13.5±0.1	13.6±0.1	-

**Taping quantity**

SERIES	5824 5724	5320 5220	4532	4516	3225	3216 2520	2012 1608	1005 0605
PCS/Reel	5000	3000	1000	2000	2500	3000	4000	10000



In the effort to improve our products, we reserve the right to make changes judged to be necessary.

CONFIDENTIAL AND PROPRIETARY INFORMATION

This document contains confidential and proprietary information of Pulse Electronics, Inc. (Pulse) and is protected by copyright, trade secret and other state and federal laws. Its receipt or possession does not convey any rights to reproduce, disclose its contents, or to manufacture, use or sell anything it may describe. Reproduction, disclosure or use without specific written authorization of Pulse is strictly forbidden.

**Description:** 1608 Diplexer**PART NUMBER:** DPX1608LKEFR2460L**REVISION HISTORY**

Revision	Date	Description
Version 1	Apr. 13, 2022	- New issue

# Mouser Electronics

Authorized Distributor

Click to View Pricing, Inventory, Delivery & Lifecycle Information:

[Pulse:](#)

[DPX1608LKEFR2460L](#)