

# DATA SHEET

## JUMPER WIRE

Tinned Copper Wire

JPW Series

ø0.5, ø0.6, ø0.7, ø0.8, ø1.0

RoHS compliant & Halogen Free





## APPLICATIONS

- All general purpose applications

## FEATURES

- Suitable for automatic machine insertion
- RoHS compliant & halogen-free

## ORDERING INFORMATION

Part number of the tinned copper wires are identified by the series, wire diameter, tolerance, packing, temperature coefficient and forming.

## PART NUMBER

|            |            |          |          |          |            |
|------------|------------|----------|----------|----------|------------|
| <b>JPW</b> | <b>-06</b> | <b>-</b> | <b>T</b> | <b>-</b> | <b>52-</b> |
| (1)        | (2)        | (3)      | (4)      | (5)      | (6)        |

### (1) SERIES

JPW Series

### (2) Wire Diameter

-05 = 0.5mm

-06 = 0.6mm

-07 = 0.7mm

-08 = 0.8mm

-10 = 1.0mm

### (3) TOLERANCE

- = Based on spec.

### (4) PACKAGING

R = Reel Pack

B = Bulk

T = Box Pack

### (5) TEMPERATURE COEFFICIENT OF RESISTANCE

- = Based on spec.

### (6) FORMING

26- = 26mm

52- = 52.4mm

73- = 73mm

M = M-Type Forming

M504 = M type forming, P=5.0±1.0mm, H=4±0.5mm

(For all types please refer to page 6 )

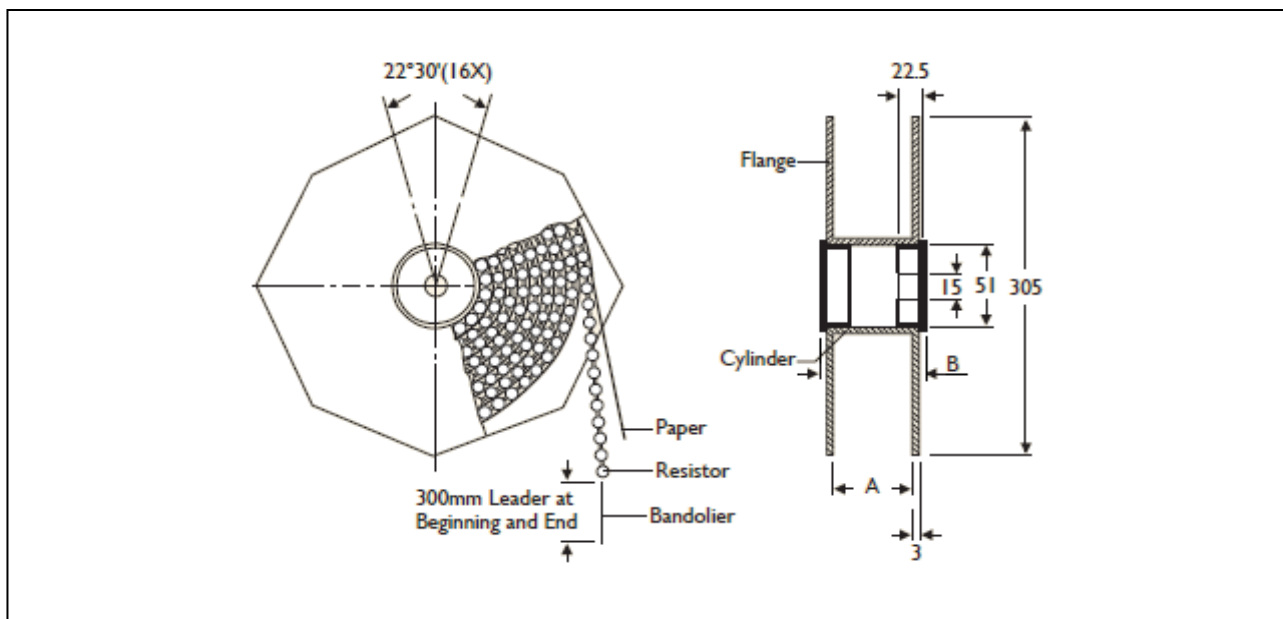
**DIMENSIONS**

Unit: mm

|  | Normal | $\psi d$  | L    |        | S      | a     |
|--|--------|-----------|------|--------|--------|-------|
|  | JPW-05 | 0.5 ±0.05 | 26±1 | 52.4±1 | -      |       |
|  | JPW-06 | 0.6 ±0.05 | 26±1 | 52.4±1 | -      |       |
|  | JPW-07 | 0.7 ±0.05 | 26±1 | 52.4±1 | 73±1.5 | 5±0.1 |
|  | JPW-08 | 0.8 ±0.05 | 26±1 | 52.4±1 | 73±1.5 | 6±0.5 |
|  | JPW-10 | 1.0 ±0.05 | 26±1 | 52.4±1 | 73±1.5 |       |

**ELECTRICAL CHARACTERISTICS**

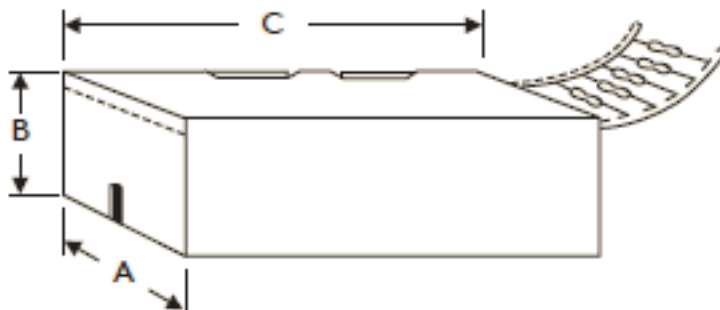
| CHARACTERISTICS         | JPW   |                     |
|-------------------------|---|---------------------|
| Material of Jumper Wire | Soft copper wire with tin plating           |                     |
| Wire Diameter           | ø0.5, ø0.6, ø0.7, ø0.8, ø1.0 (±0.05mm)      |                     |
| Tension Strength        | CNS 8938 within 28kg/mm <sup>2</sup>        |                     |
| Extension Rate          | CNS 8938 ø0.5 to ø0.6mm                     | over 24%            |
|                         | CNS 8938 ø0.7 to ø1.0mm                     | over 26%            |
| Conductivity            | ø0.5mm                                      | Minimum 94%         |
|                         | ø0.6 to ø1.0mm                              | Minimum 96%         |
| Twisting Strength       | CNS 8938 ψ0.5 mm                            | Load 250 g 3 cycles |
|                         | CNS 8938 ψ0.6 ~ψ0.8 mm                      | Load 500 g 3 cycles |
|                         | CNS 8938 ψ1.0 mm                            | Load 1.0kg 3 cycles |
| Solderability           | 245°C ± 5°C , 5 ± 0.5 sec. Coverage 95% Min |                     |
| Element of Plating      | Tin Minimum 99.9%                           |                     |
| Thickness of Plating    | 4±1µm                                       |                     |
| Current Rating          | ø0.5mm                                      | 6 AMPS at 70°C      |
|                         | ø0.6mm                                      | 7.5 AMPS at 70°C    |
|                         | ø0.7mm                                      | 8.5 AMPS at 70°C    |
|                         | ø0.8mm                                      | 10 AMPS at 70°C     |
|                         | ø10mm                                       | 15 AMPS at 70°C     |
| Appearance              | Smooth and shining                          |                     |

**TAPE ON REEL PACKING**

TYPE

Unit: mm/piece

| Normal | Across Flange(A) | B    | Quantity Per Reel |
|--------|------------------|------|-------------------|
| JPW-05 | 66.5             | 75.5 | 10,000            |
| JPW-06 | 66.5             | 75.5 | 10,000            |
| JPW-07 | 66.5             | 75.5 | 10,000            |
| JPW-07 | 87               | 96   | 10,000            |
| JPW-08 | 66.5             | 75.5 | 10,000            |
| JPW-08 | 87               | 96   | 10,000            |
| JPW-10 | 66.5             | 75.5 | 5,000             |
| JPW-10 | 87               | 96   | 5,000             |

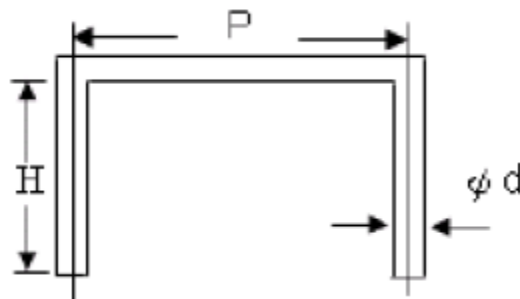
**TAPE ON BOX PACKING**

Unit: mm/piece

| Normal | A  | B   | C   | Quantity Per Box |
|--------|----|-----|-----|------------------|
| JPW-05 | 48 | 68  | 255 | 5,000            |
| JPW-05 | 78 | 115 | 260 | 10,000           |
| JPW-06 | 48 | 68  | 255 | 5,000            |
| JPW-06 | 78 | 115 | 260 | 10,000           |
| JPW-07 | 48 | 68  | 255 | 5,000            |
| JPW-07 | 78 | 115 | 260 | 10,000           |
| JPW-08 | 48 | 68  | 255 | 5,000            |
| JPW-08 | 81 | 70  | 260 | 5,000            |
| JPW-10 | 48 | 68  | 255 | 5,000            |
| JPW-10 | 81 | 70  | 260 | 5,000            |

**BULK PACKING**

| Normal | Piece/Per Inner Box | Bag/Per Inner Box | Piece Per Bag |
|--------|---------------------|-------------------|---------------|
| JPW-05 | 10,000              | 10                | 1,000         |
| JPW-06 | 10,000              | 10                | 1,000         |
| JPW-07 | 10,000              | 10                | 1,000         |
| JPW-08 | 10,000              | 10                | 1,000         |
| JPW-10 | 10,000              | 10                | 1,000         |

**FORMING****M TYPE**

| TYPE   | DIMENSIONS |          |          | Unit: mm     |
|--------|------------|----------|----------|--------------|
| Normal | $\psi d$   | P        | H        | Forming code |
| JPW-05 | 0.5±0.05   | 5.0±1.0  | 4.0±0.5  | M504         |
|        |            | 5.0±1.0  | 10.0±1.0 | M5010        |
|        |            | 5.0±1.0  | 4.0±0.5  | M504         |
|        |            | 8.0±1.0  | 4.0±0.5  | M804         |
| JPW-06 | 0.6±0.05   | 7.5±1.0  | 10.0±0.5 | M75010       |
|        |            | 14.0±1.0 | 3.5±1.0  | M14035       |
|        |            | 16.5±1.0 | 3.5±1.0  | M165035      |
| JPW-07 | 0.7±0.05   |          |          |              |
| JPW-08 | 0.8±0.05   |          |          |              |
| JPW-10 | 1.0±0.05   |          |          |              |

**REVISION HISTORY**

| REVISION  | DATE         | CHANGE NOTIFICATION | DESCRIPTION                         |
|-----------|--------------|---------------------|-------------------------------------|
| Version 0 | Aug.2, 2021  | -                   | - First issue of this specification |
| Version 1 | Mar.10, 2022 |                     | -Add M14035& M165035 forming code   |
| Version 2 | Apr. 6, 2022 |                     | - Update M75010 forming code        |

*“ Yageo reserves all the rights for revising the content of this datasheet without further notification, as long as the products itse lf are unchanged. Any product change will be announced by PCN.”*

## LEGAL DISCLAIMER

YAGEO, its distributors and agents (collectively, "YAGEO"), hereby disclaims any and all liabilities for any errors, inaccuracies or incompleteness contained in any product related information, including but not limited to product specifications, datasheets, pictures and/or graphics. YAGEO may make changes, modifications and/or improvements to product related information at any time and without notice.

YAGEO makes no representation, warranty, and/or guarantee about the fitness of its products for any particular purpose or the continuing production of any of its products. To the maximum extent permitted by law, YAGEO disclaims (i) any and all liability arising out of the application or use of any YAGEO product, (ii) any and all liability, including without limitation special, consequential or incidental damages, and (iii) any and all implied warranties, including warranties of fitness for a particular purpose, non-infringement and merchantability.

YAGEO products are designed for general purpose applications under normal operation and usage conditions. Please contact YAGEO for the applications listed below which require especially high reliability for the prevention of defects which might directly cause damage to the third party's life, body or property: Aerospace equipment (artificial satellite, rocket, etc.), Atomic energy-related equipment, Aviation equipment, Disaster prevention equipment, crime prevention equipment, Electric heating apparatus, burning equipment, Highly public information network equipment, data-processing equipment, Medical devices, Military equipment, Power generation control equipment, Safety equipment, Traffic signal equipment, Transportation equipment and Undersea equipment, or for any other application or use in which the failure of YAGEO products could result in personal injury or death, or serious property damage. Particularly **YAGEO Corporation and its affiliates do not recommend the use of commercial, automotive, and/or COTS grade products for high reliability applications or manned space flight.**

Information provided here is intended to indicate product specifications only. YAGEO reserves all the rights for revising this content without further notification, as long as products are unchanged. Any product change will be announced by PCN.



# Mouser Electronics

Authorized Distributor

Click to View Pricing, Inventory, Delivery & Lifecycle Information:

YAGEO:

[JPW-06-R-52-](#) [JPW-08-R-52-](#) [JPW-06-R-73-](#) [JPW-08-R-73-](#) [JPW-10-R-52-](#) [JPW-06-T-52-](#) [JPW-08-R-26-](#) [JPW-05-T-52-](#) [JPW-08-T-52-](#)