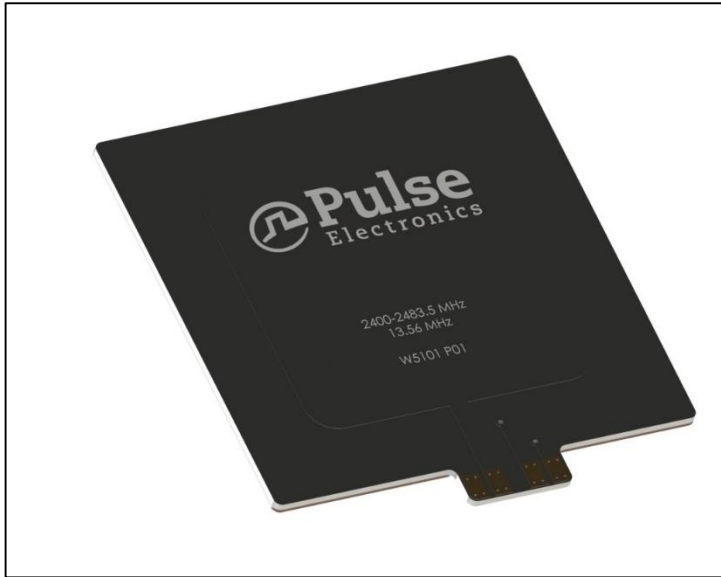


Description: On-ground BLE/NFC combo

Series: Embedded Antenna

PART NUMBER: W5101

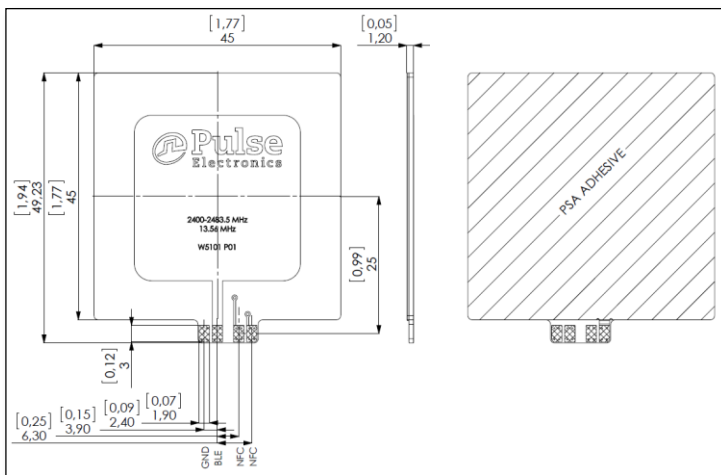


Features:

- Own feed ports for 2.4GHz and NFC 13.56MHz
- Ultra thin 1.2mm
- Surface area 45x45mm
- Operates on top of metal ground plane
- Mounting with adhesive tape

Applications:

- Devices using 2.4GHz radios and 13.56MHz NFC connectivity
- BLE, Bluetooth, Zigbee, ISM 2.4GHz
- Pairing, sharing



All dimensions are in mm / inches

Issue: 1613

In the effort to improve our products, we reserve the right to make changes judged to be necessary.

CONFIDENTIAL AND PROPRIETARY INFORMATION

This document contains confidential and proprietary information of Pulse Electronics, Inc. (Pulse) and is protected by copyright, trade secret and other state and federal laws. Its receipt or possession does not convey any rights to reproduce, disclose its contents, or to manufacture, use or sell anything it may describe. Reproduction, disclosure or use without specific written authorization of Pulse is strictly forbidden.

For more information:

Pulse Worldwide Headquarters
12220 World Trade Drive
San Diego, CA 92128
USA
Tel: 1-858-674-8100

Pulse/Larsen Antennas
3611 NE 112th Ave
Vancouver, WA 98682
USA
Tel: 1-360-944-7551

Europe Headquarters
Pulse GmbH & Co, KG
Zeppelinstrasse 15
Herrenberg, Germany
Tel: 49 7032 7806 0

Pulse (Suzhou) Wireless Products Co, Inc.
99 Huo Ju Road(#29 Bldg, 4th Phase
Suzhou New District
Jiangsu Province, Suzhou 215009 PR China
Tel: 86 512 6807 9998



Description: On-ground BLE/NFC combo**Series:** Embedded Antenna**PART NUMBER:** W5101**ELECTRICAL SPECIFICATIONS**

Frequency P1	2400-2483.5 MHz
Frequency P2	13.56 MHz
P1 nominal Impedance	50Ω
P1 VSWR	<3:1
P1 Gain in free space	0.5dBi
P1 Gain over metal plate	1.5dBi
P2 Inductance in free space	1.13μH
P2 Q-value in free space	46
P2 Self Resonant Frequency in free space	57.6MHz
P2 Inductance over metal plate	1.11μH
P2 Q-value over metal plate	33
P2 Self Resonant Frequency over metal plate	53.8MHz
Connector type	Contact pads

Description: On-ground BLE/NFC combo

Series: Embedded Antenna

PART NUMBER: W5101

MECHANICAL SPECIFICATIONS

Color	Black
Weight	5.7 g
Fixing system	Pressure sensitive adhesive

ENVIRONMENTAL SPECIFICATIONS

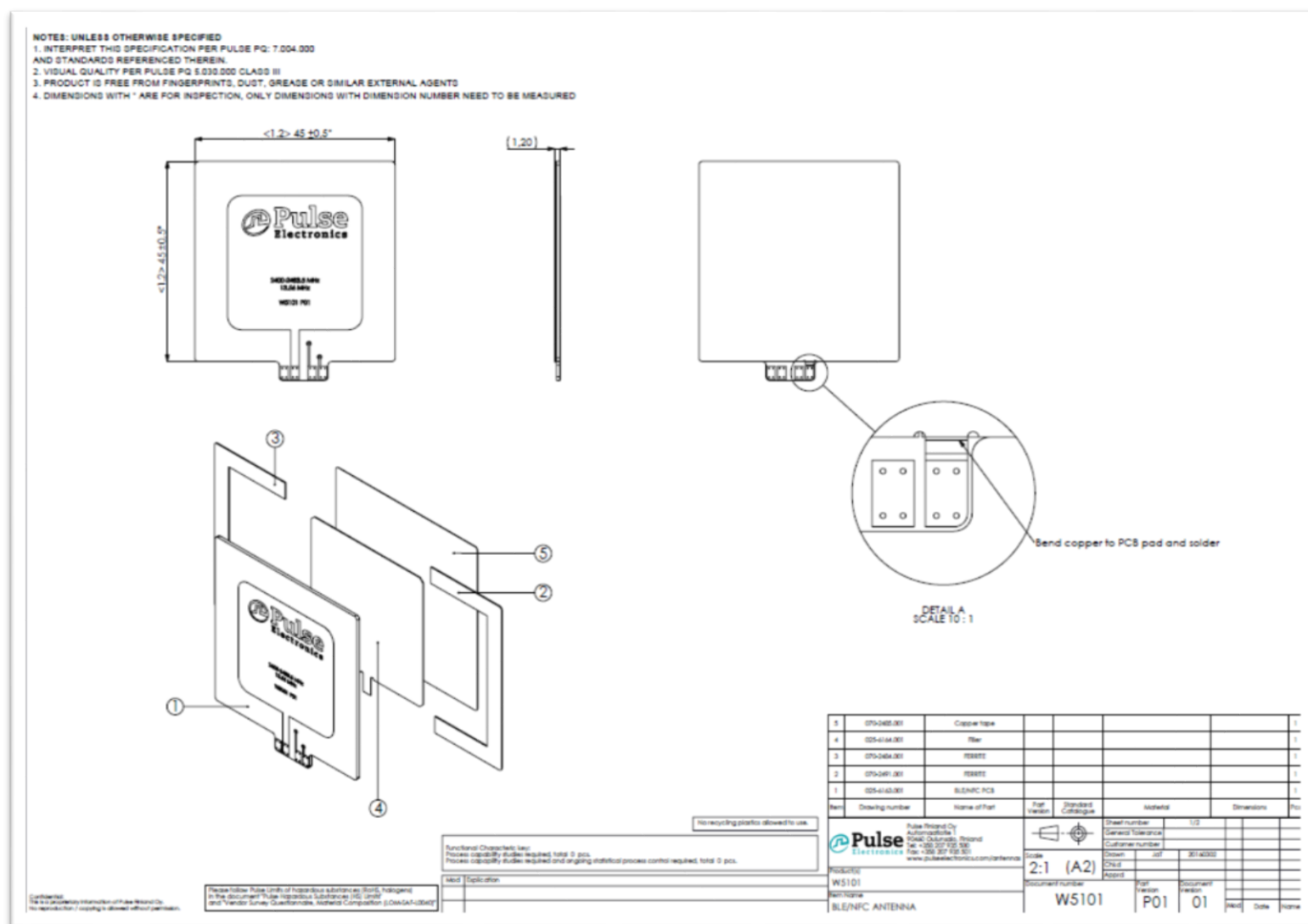
Operating temperature	-40 to 85°C
Storage temperature	MIL STD 810G: 24h at 85°C and 24h at -40°C
Temperature shock	MIL STD 810G: Method 503.5, -40 for 1 hr to +85 C for 1 hr @ 15 deg.C/min rate of change; 3 cycles
Humidity	MIL STD 810G: 24h at 60°C and 95%RH
Drop test	Top, bottom, side. 3 times/orientation, 40"

Description: On-ground BLE/NFC combo

Series: Embedded Antenna

PART NUMBER: W5101

MECHANICAL DRAWING



Issue: 1613

In the effort to improve our products, we reserve the right to make changes judged to be necessary.

CONFIDENTIAL AND PROPRIETARY INFORMATION

This document contains confidential and proprietary information of Pulse Electronics, Inc. (Pulse) and is protected by copyright, trade secret and other state and federal laws. Its receipt or possession does not convey any rights to reproduce, disclose its contents, or to manufacture, use or sell anything it may describe. Reproduction, disclosure or use without specific written authorization of Pulse is strictly forbidden.

Description: On-ground BLE/NFC combo

Series: Embedded Antenna

PART NUMBER: W5101

OTHER SPECIFICATIONS

Test setup over metal (80x80mm²). Material Ni plated steel
Antenna contact points shown for BLE(P1) and NFC (P2)



Issue: 1613

In the effort to improve our products, we reserve the right to make changes judged to be necessary.

CONFIDENTIAL AND PROPRIETARY INFORMATION

This document contains confidential and proprietary information of Pulse Electronics, Inc. (Pulse) and is protected by copyright, trade secret and other state and federal laws. Its receipt or possession does not convey any rights to reproduce, disclose its contents, or to manufacture, use or sell anything it may describe. Reproduction, disclosure or use without specific written authorization of Pulse is strictly forbidden.

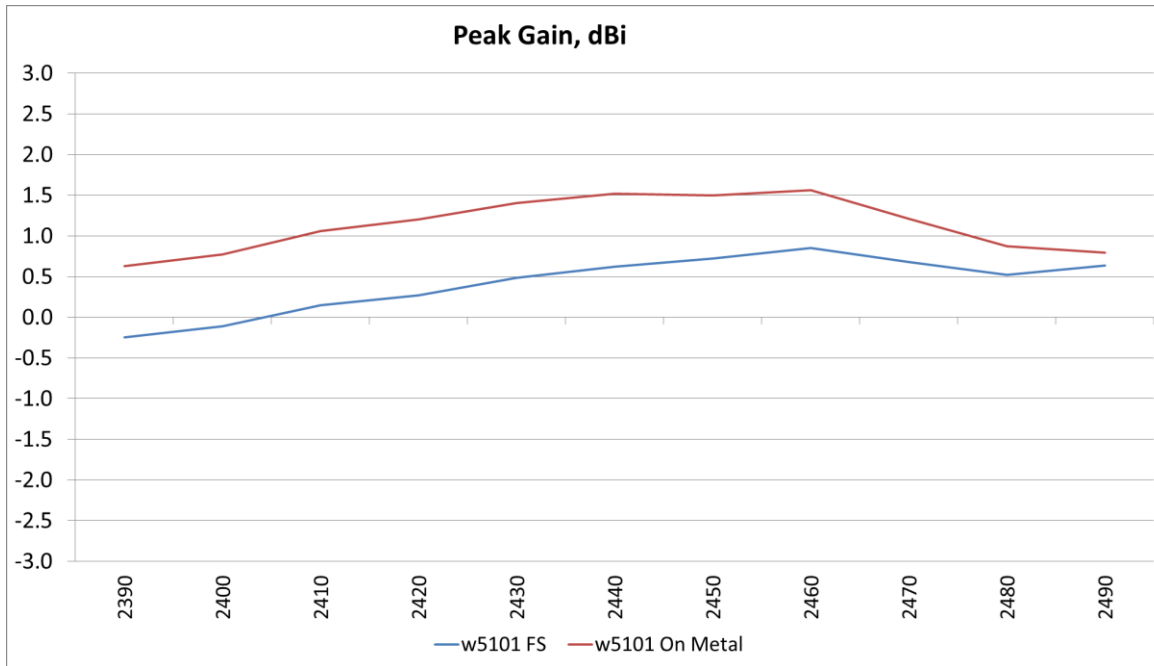
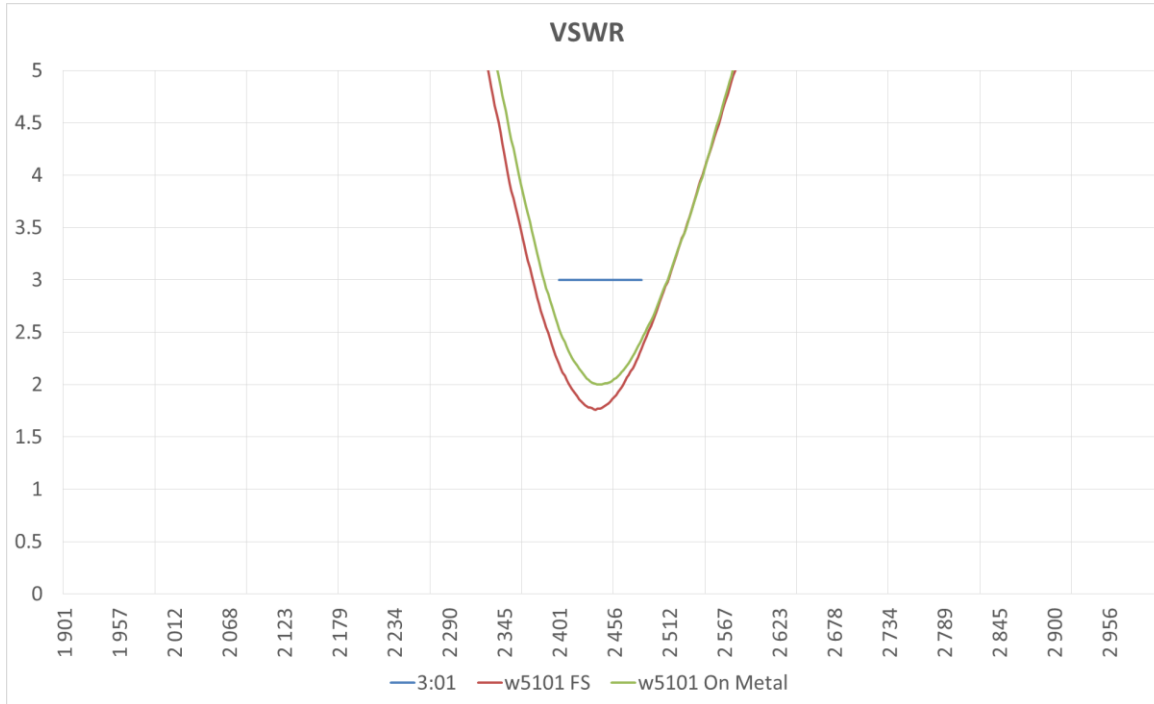
Description: On-ground BLE/NFC combo

Series: Embedded Antenna

PART NUMBER: W5101

CHARTS

P1



Issue: 1613

In the effort to improve our products, we reserve the right to make changes judged to be necessary.

CONFIDENTIAL AND PROPRIETARY INFORMATION

This document contains confidential and proprietary information of Pulse Electronics, Inc. (Pulse) and is protected by copyright, trade secret and other state and federal laws. Its receipt or possession does not convey any rights to reproduce, disclose its contents, or to manufacture, use or sell anything it may describe. Reproduction, disclosure or use without specific written authorization of Pulse is strictly forbidden.

Description: On-ground BLE/NFC combo

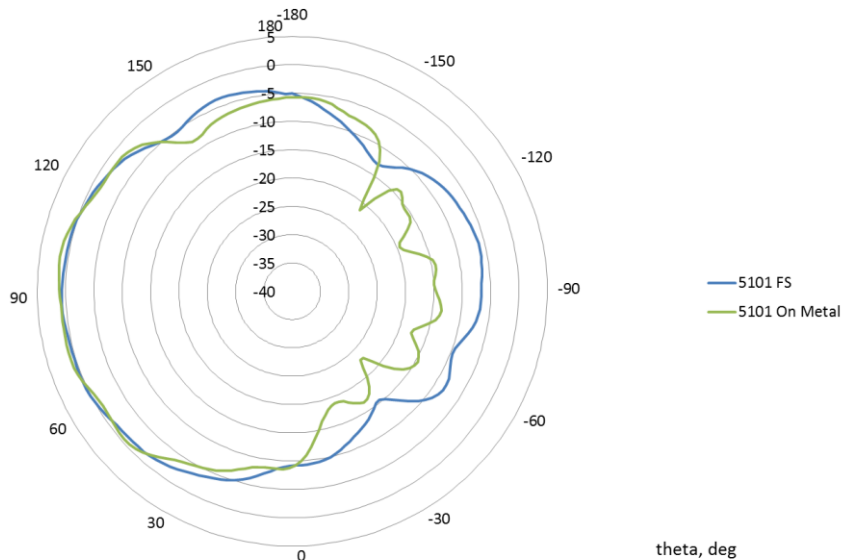
Series: Embedded Antenna

PART NUMBER: W5101

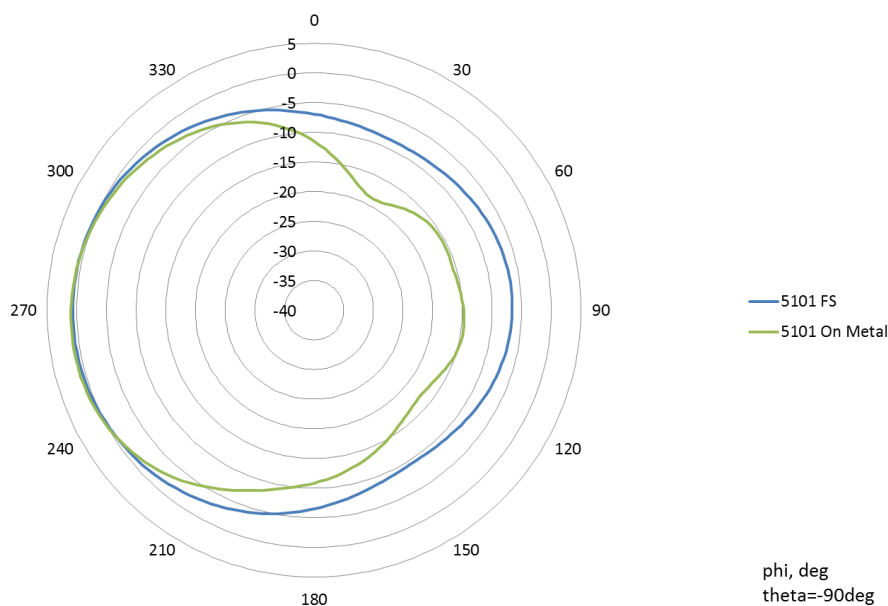
CHARTS

P1

Vertical plane



Horizontal plane



Issue: 1613

In the effort to improve our products, we reserve the right to make changes judged to be necessary.

CONFIDENTIAL AND PROPRIETARY INFORMATION

This document contains confidential and proprietary information of Pulse Electronics, Inc. (Pulse) and is protected by copyright, trade secret and other state and federal laws. Its receipt or possession does not convey any rights to reproduce, disclose its contents, or to manufacture, use or sell anything it may describe. Reproduction, disclosure or use without specific written authorization of Pulse is strictly forbidden.

Description: On-ground BLE/NFC combo

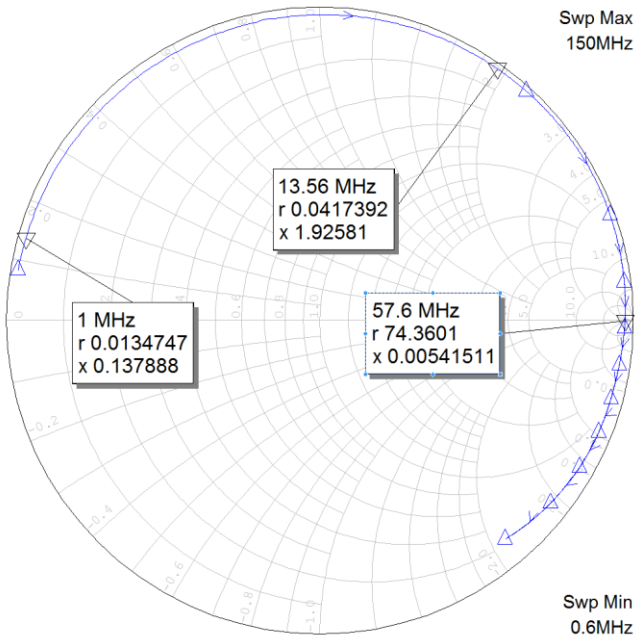
Series: Embedded Antenna

PART NUMBER: W5101

CHARTS

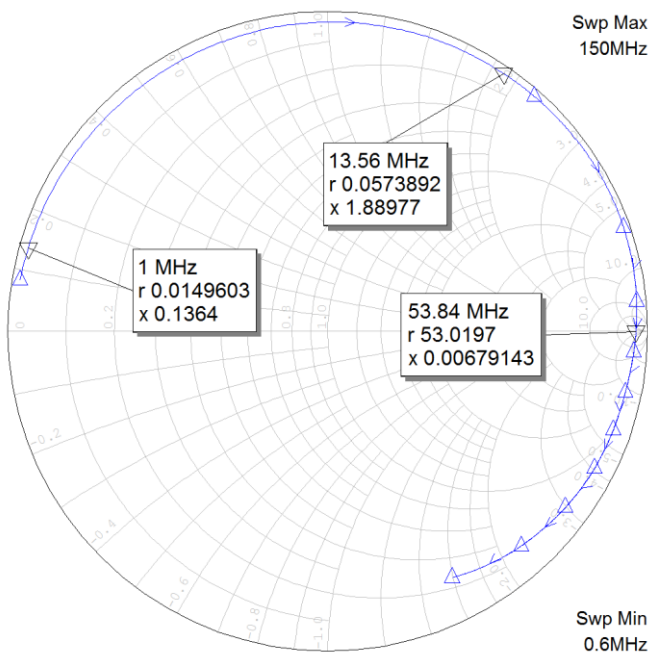
P2

Free Space 1



L @13.56MHz, μ H	1.13
Q @13.56MHz	46
SRF, MHz	57.6

On Metal 1



L @13.56MHz, μ H	1.11
Q @13.56MHz	33
SRF, MHz	53.8

Issue: 1613

In the effort to improve our products, we reserve the right to make changes judged to be necessary.

CONFIDENTIAL AND PROPRIETARY INFORMATION

This document contains confidential and proprietary information of Pulse Electronics, Inc. (Pulse) and is protected by copyright, trade secret and other state and federal laws. Its receipt or possession does not convey any rights to reproduce, disclose its contents, or to manufacture, use or sell anything it may describe. Reproduction, disclosure or use without specific written authorization of Pulse is strictly forbidden.

Description: On-ground BLE/NFC combo

Series: Embedded Antenna

PART NUMBER: W5101

PACKAGING

Sealed plastic bag 60x90mm

ASSEMBLY

Pull off adhesive cover from backside and attach. Apply pressure 10N/cm² for 4 seconds to activate pressure sensitive adhesive.

Issue: 1613

In the effort to improve our products, we reserve the right to make changes judged to be necessary.

CONFIDENTIAL AND PROPRIETARY INFORMATION

This document contains confidential and proprietary information of Pulse Electronics, Inc. (Pulse) and is protected by copyright, trade secret and other state and federal laws. Its receipt or possession does not convey any rights to reproduce, disclose its contents, or to manufacture, use or sell anything it may describe. Reproduction, disclosure or use without specific written authorization of Pulse is strictly forbidden.

Mouser Electronics

Authorized Distributor

Click to View Pricing, Inventory, Delivery & Lifecycle Information:

Pulse:

W5101