

Description: 791-2170MHz SMT Antenna

Series: Domino

PART NUMBER: W3326

Features:

- Frequency:
791-960/1710-2170MHz
- Size 20 x 7 x 1.5mm
- Gain 0.6 / 2.3dBi
- Efficiency >50/50%
- SMD compatible



Applications:

- Nb-IoT
- LTE Cat-M1
- High and low bands combo
- Sensors
- IoT connected devices

All dimensions are in mm / inches

Issue: 2039

In the effort to improve our products, we reserve the right to make changes judged to be necessary.

CONFIDENTIAL AND PROPRIETARY INFORMATION

This document contains confidential and proprietary information of Pulse Electronics, Inc. (Pulse) and is protected by copyright, trade secret and other state and federal laws. Its receipt or possession does not convey any rights to reproduce, disclose its contents, or to manufacture, use or sell anything it may describe. Reproduction, disclosure or use without specific written authorization of Pulse is strictly forbidden.

For more information:

Pulse Worldwide Headquarters
15255 Innovation Drive #100
San Diego, CA 92128
USA
Tel: 1-858-674-8100

Pulse/Larsen Antennas
18110 SE 34th St Bldg 2 Suite 250
Vancouver, WA 98683
USA
Tel: 1-360-944-7551

Europe Headquarters
Pulse GmbH & Co, KG
Zeppelinstrasse 15
Herrenberg, Germany
Tel: 49 7032 7806 0

Pulse (Suzhou) Wireless Products Co, Inc.
99 Huo Ju Road(#29 Bldg, 4th Phase
Suzhou New District
Jiangsu Province, Suzhou 215009 PR China
Tel: 86 512 6807 9998



Description: 791-2170MHz SMT Antenna**Series:** Domino**PART NUMBER:** W3326**ELECTRICAL SPECIFICATIONS**

Antenna Type	PCB, SMD
Frequency	791-960MHz 1710-2170MHz
Nominal Impedance	50 Ω
Return loss	5dB
Radiation Pattern	Omni
Peak Gain	0.6 / 2.3 dBi
Nominal Efficiency	50 / 50 %
Polarization	Vertical

MECHANICAL SPECIFICATIONS

Overall Length	20mm(L) * 7mm(W) * 1.5mm(T)
Weight	1.3g
Antenna Color / Material	Black / Composite
Assembly method	SMD / Reflow
Packing	Tape & Reel
Moisture Sensitivity Level	MSL3

ENVIRONMENTAL SPECIFICATIONS

Operating Temperature	-40~+85° C
Storage Temperature	-40~+85° C
RoHS Compliant	Yes

OTHER SPECIFICATIONS

(*) All RF parameters measured on Pulse reference test PCB

Issue: 2039

In the effort to improve our products, we reserve the right to make changes judged to be necessary.

CONFIDENTIAL AND PROPRIETARY INFORMATION

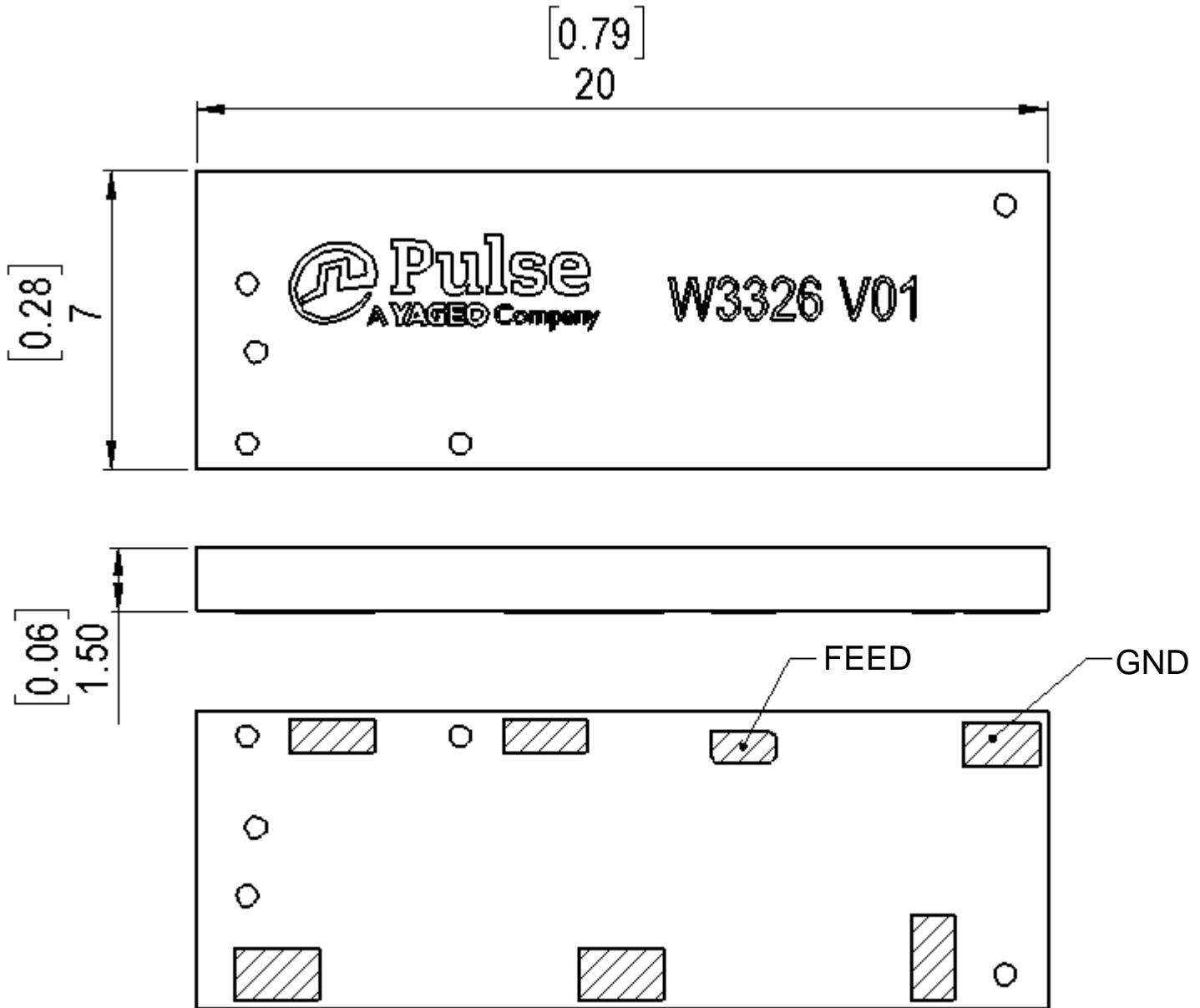
This document contains confidential and proprietary information of Pulse Electronics, Inc. (Pulse) and is protected by copyright, trade secret and other state and federal laws. Its receipt or possession does not convey any rights to reproduce, disclose its contents, or to manufacture, use or sell anything it may describe. Reproduction, disclosure or use without specific written authorization of Pulse is strictly forbidden.

Description: 791-2170MHz SMT Antenna

Series: Domino

PART NUMBER: W3326

MECHANICAL DRAWING AND TERMINAL CONFIGURATION



Issue: 2039

In the effort to improve our products, we reserve the right to make changes judged to be necessary.

CONFIDENTIAL AND PROPRIETARY INFORMATION

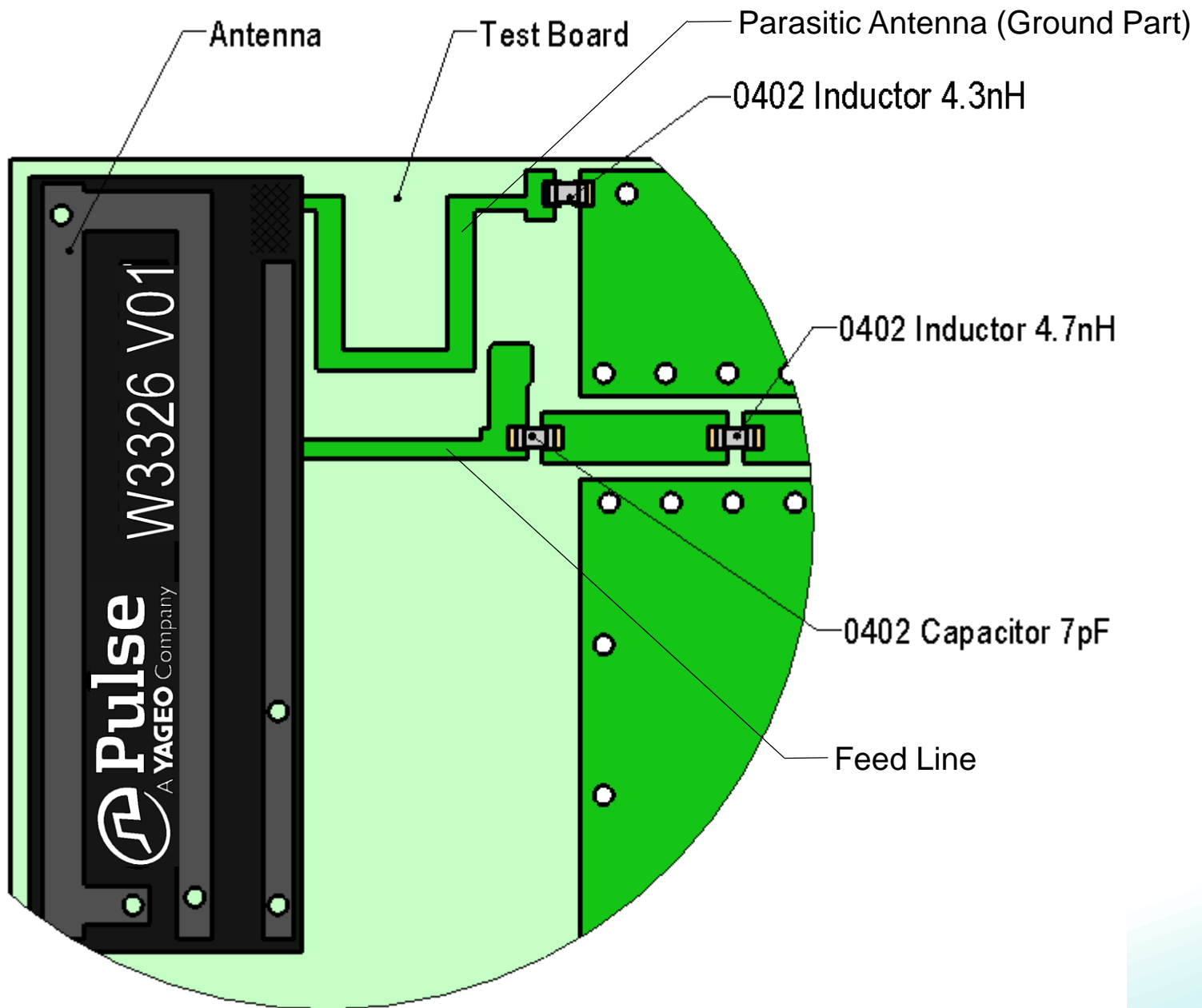
This document contains confidential and proprietary information of Pulse Electronics, Inc. (Pulse) and is protected by copyright, trade secret and other state and federal laws. Its receipt or possession does not convey any rights to reproduce, disclose its contents, or to manufacture, use or sell anything it may describe. Reproduction, disclosure or use without specific written authorization of Pulse is strictly forbidden.

Description: 791-2170MHz SMT Antenna

Series: Domino

PART NUMBER: W3326

MECHANICAL DRAWING AND TERMINAL CONFIGURATION



Issue: 2039

In the effort to improve our products, we reserve the right to make changes judged to be necessary.

CONFIDENTIAL AND PROPRIETARY INFORMATION

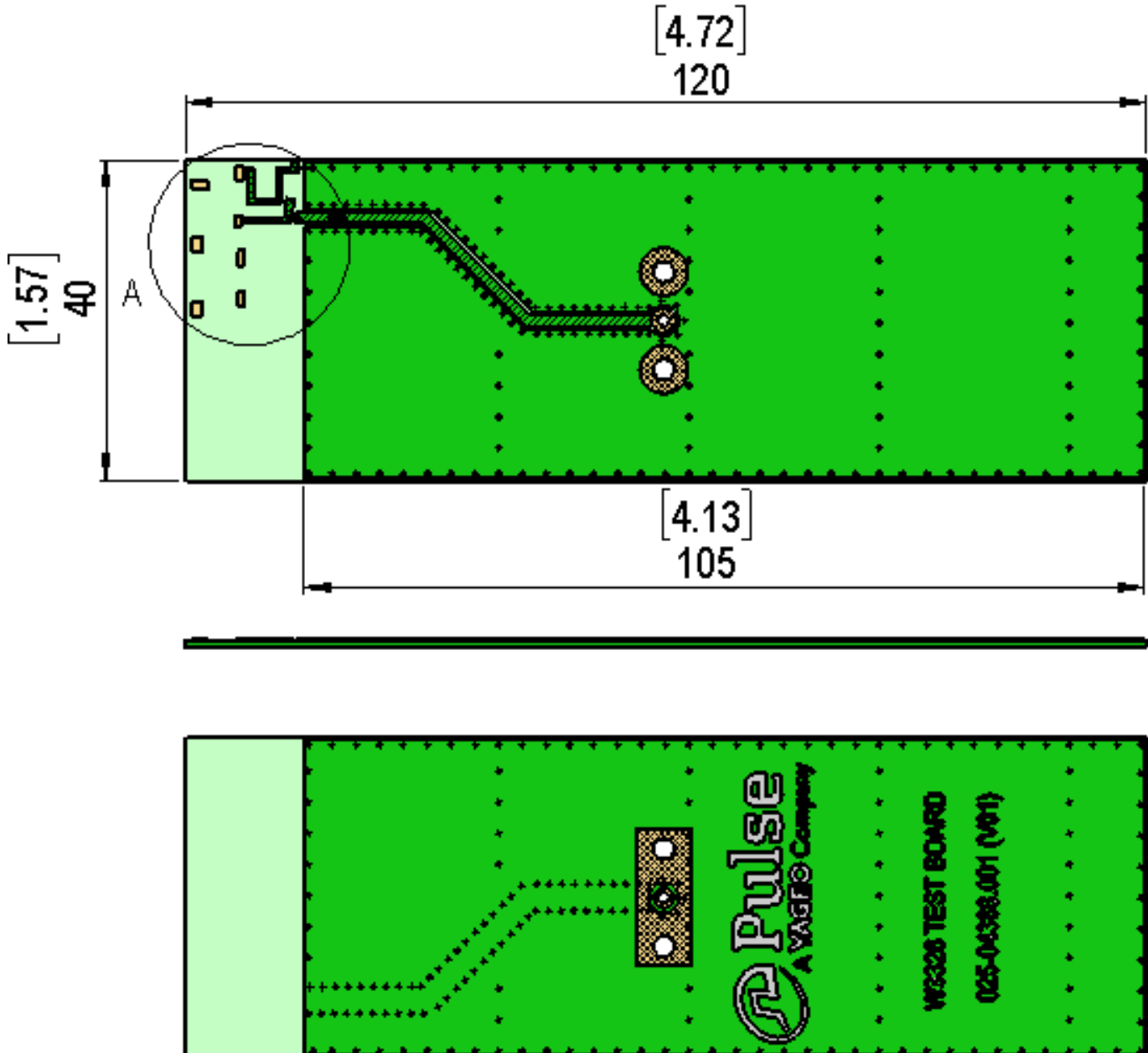
This document contains confidential and proprietary information of Pulse Electronics, Inc. (Pulse) and is protected by copyright, trade secret and other state and federal laws. Its receipt or possession does not convey any rights to reproduce, disclose its contents, or to manufacture, use or sell anything it may describe. Reproduction, disclosure or use without specific written authorization of Pulse is strictly forbidden.

Description: 791-2170MHz SMT Antenna

Series: Domino

PART NUMBER: W3326

MECHANICAL DRAWING AND TERMINAL CONFIGURATION



Issue: 2039

In the effort to improve our products, we reserve the right to make changes judged to be necessary.

CONFIDENTIAL AND PROPRIETARY INFORMATION

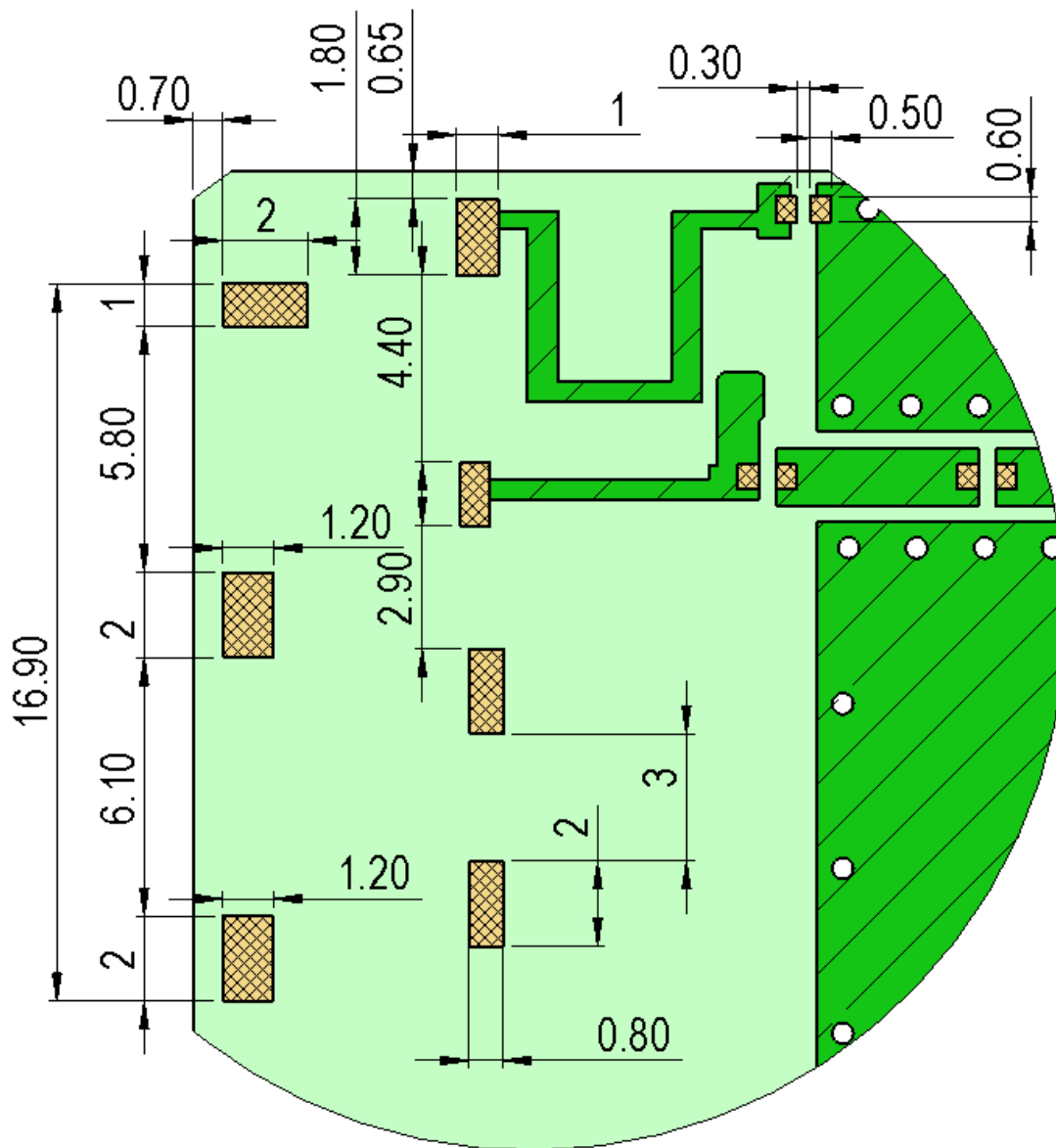
This document contains confidential and proprietary information of Pulse Electronics, Inc. (Pulse) and is protected by copyright, trade secret and other state and federal laws. Its receipt or possession does not convey any rights to reproduce, disclose its contents, or to manufacture, use or sell anything it may describe. Reproduction, disclosure or use without specific written authorization of Pulse is strictly forbidden.

Description: 791-2170MHz SMT Antenna

Series: Domino

PART NUMBER: W3326

MECHANICAL DRAWING AND TERMINAL CONFIGURATION



Detail A

Issue: 2039

In the effort to improve our products, we reserve the right to make changes judged to be necessary.

CONFIDENTIAL AND PROPRIETARY INFORMATION

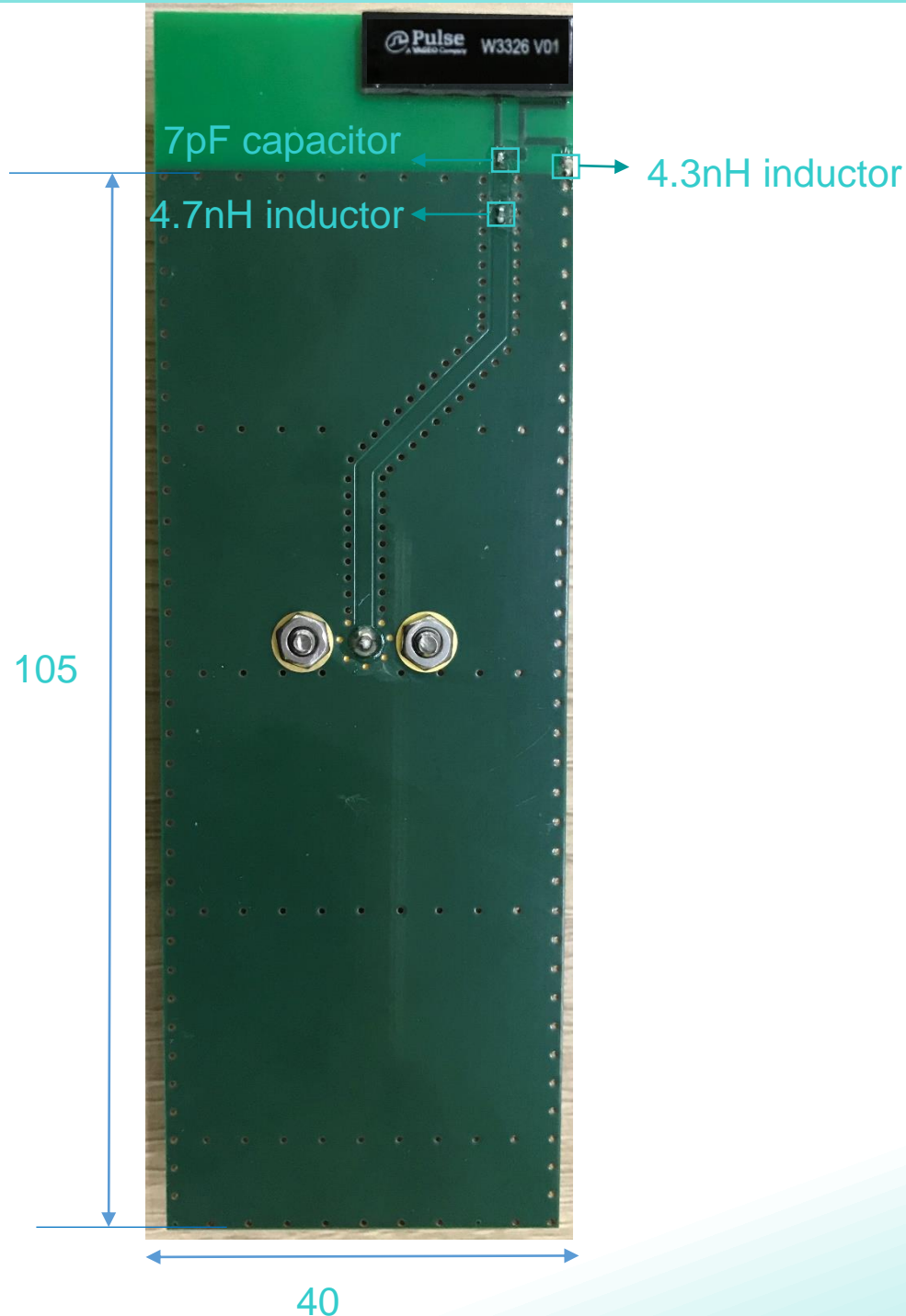
This document contains confidential and proprietary information of Pulse Electronics, Inc. (Pulse) and is protected by copyright, trade secret and other state and federal laws. Its receipt or possession does not convey any rights to reproduce, disclose its contents, or to manufacture, use or sell anything it may describe. Reproduction, disclosure or use without specific written authorization of Pulse is strictly forbidden.

Description: 791-2170MHz SMT Antenna

Series: Domino

PART NUMBER: W3326

TEST SETUP



Issue: 2039

In the effort to improve our products, we reserve the right to make changes judged to be necessary.

CONFIDENTIAL AND PROPRIETARY INFORMATION

This document contains confidential and proprietary information of Pulse Electronics, Inc. (Pulse) and is protected by copyright, trade secret and other state and federal laws. Its receipt or possession does not convey any rights to reproduce, disclose its contents, or to manufacture, use or sell anything it may describe. Reproduction, disclosure or use without specific written authorization of Pulse is strictly forbidden.

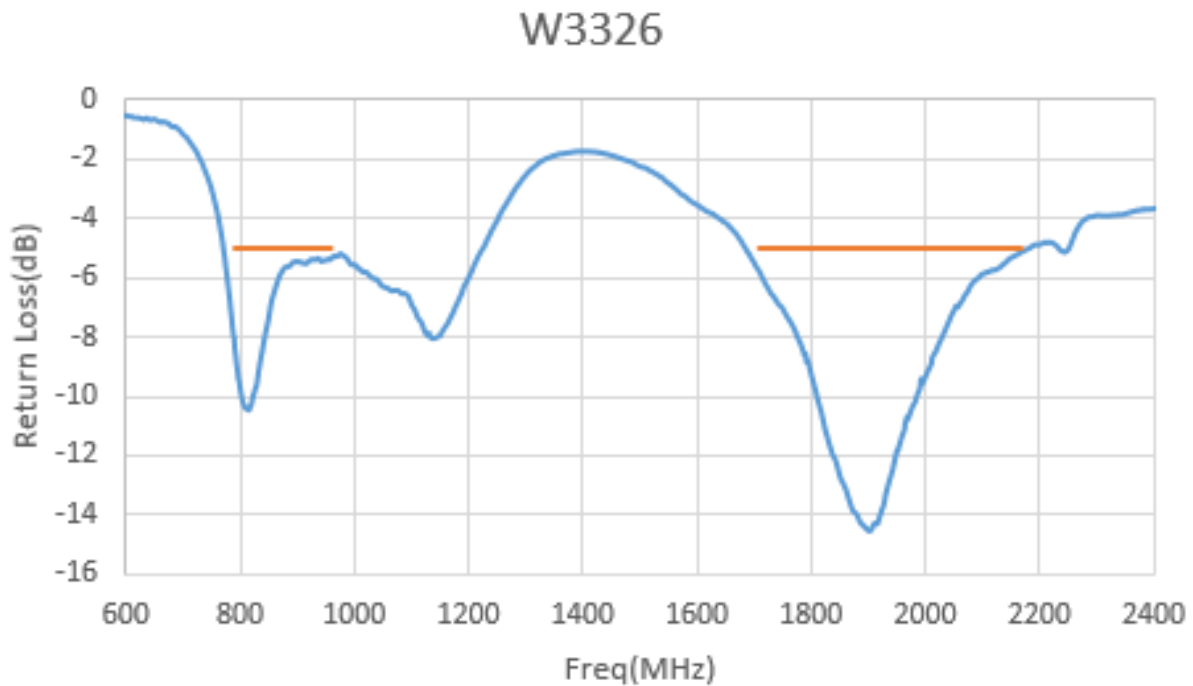
Description: 791-2170MHz SMT Antenna

Series: Domino

PART NUMBER: W3326

CHARTS

Return Loss



Issue: 2039

In the effort to improve our products, we reserve the right to make changes judged to be necessary.

CONFIDENTIAL AND PROPRIETARY INFORMATION

This document contains confidential and proprietary information of Pulse Electronics, Inc. (Pulse) and is protected by copyright, trade secret and other state and federal laws. Its receipt or possession does not convey any rights to reproduce, disclose its contents, or to manufacture, use or sell anything it may describe. Reproduction, disclosure or use without specific written authorization of Pulse is strictly forbidden.

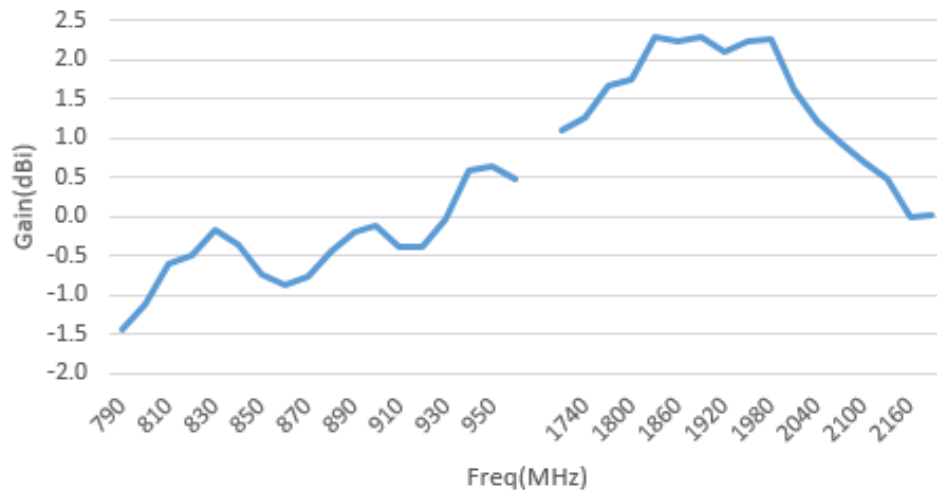
Description: 791-2170MHz SMT Antenna

Series: Domino

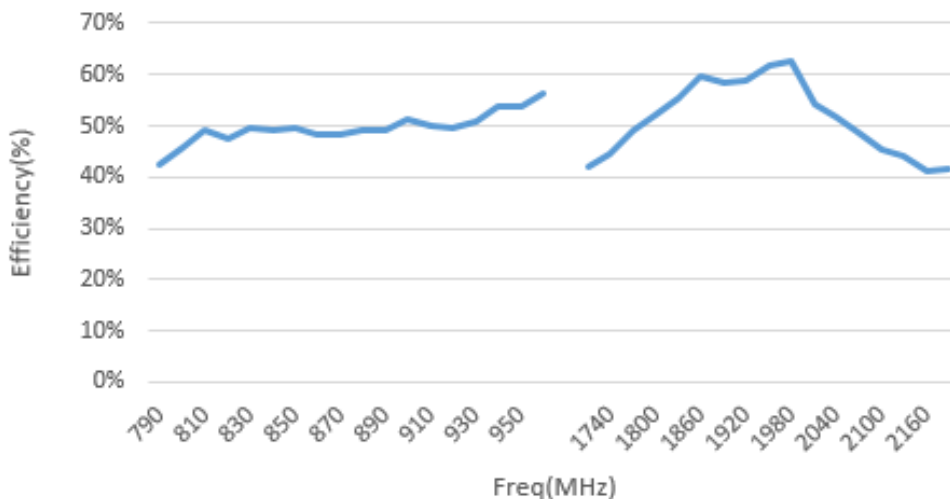
PART NUMBER: W3326

CHARTS

Gain(dBi)



Efficiency(%)



Issue: 2039

In the effort to improve our products, we reserve the right to make changes judged to be necessary.

CONFIDENTIAL AND PROPRIETARY INFORMATION

This document contains confidential and proprietary information of Pulse Electronics, Inc. (Pulse) and is protected by copyright, trade secret and other state and federal laws. Its receipt or possession does not convey any rights to reproduce, disclose its contents, or to manufacture, use or sell anything it may describe. Reproduction, disclosure or use without specific written authorization of Pulse is strictly forbidden.

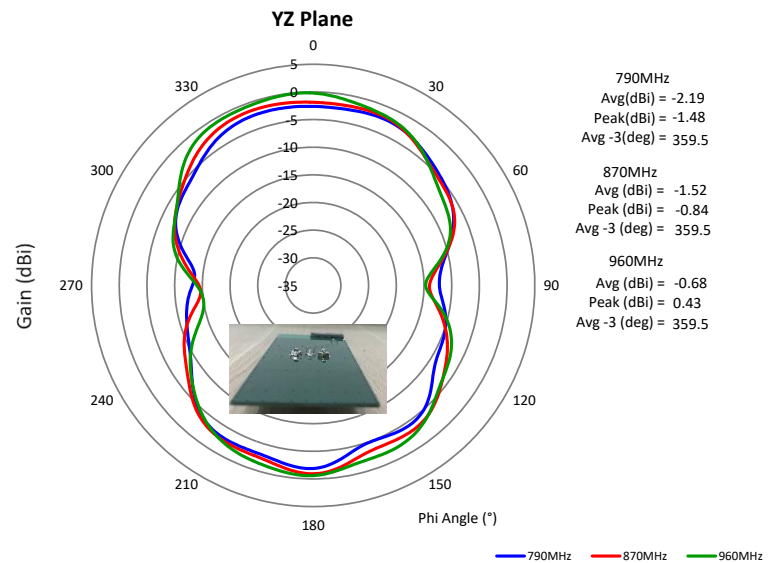
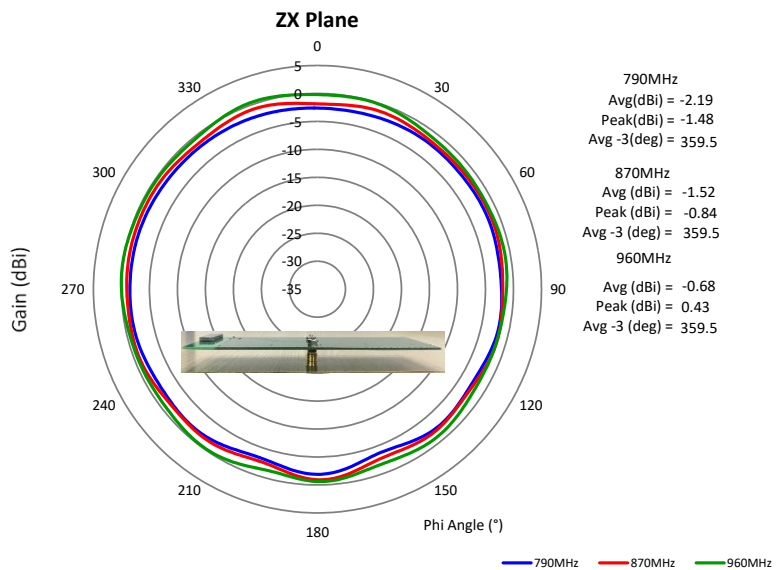
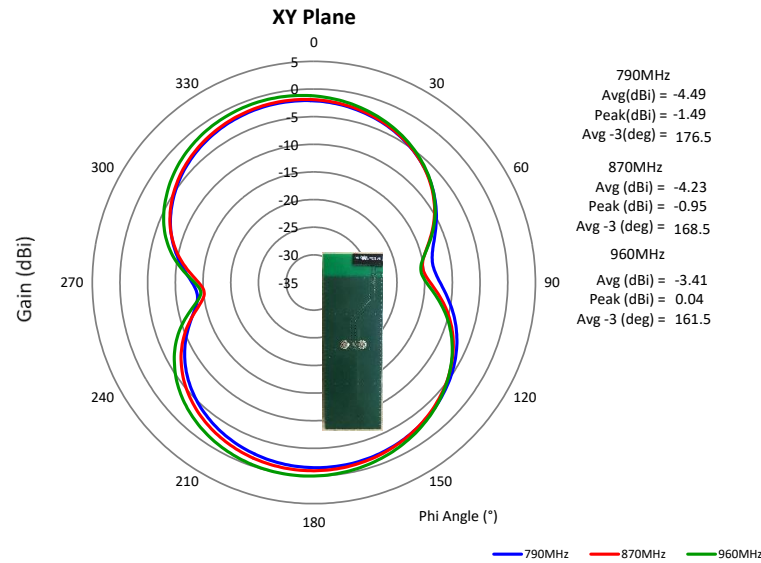
Description: 791-2170MHz SMT Antenna

Series: Domino

PART NUMBER: W3326

CHARTS

Radiation Pattern 2D (791-960MHz)



Issue: 2039

In the effort to improve our products, we reserve the right to make changes judged to be necessary.

CONFIDENTIAL AND PROPRIETARY INFORMATION

This document contains confidential and proprietary information of Pulse Electronics, Inc. (Pulse) and is protected by copyright, trade secret and other state and federal laws. Its receipt or possession does not convey any rights to reproduce, disclose its contents, or to manufacture, use or sell anything it may describe. Reproduction, disclosure or use without specific written authorization of Pulse is strictly forbidden.

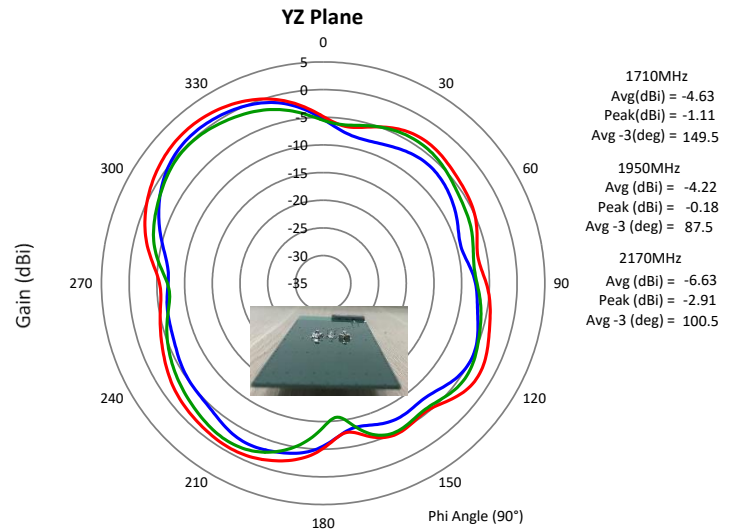
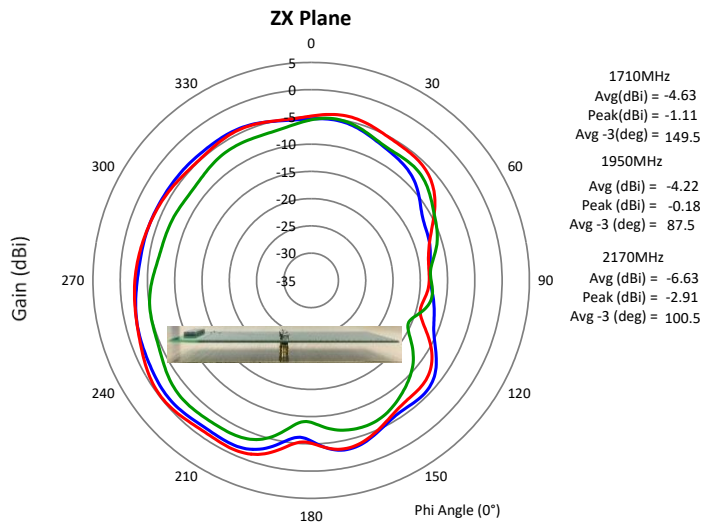
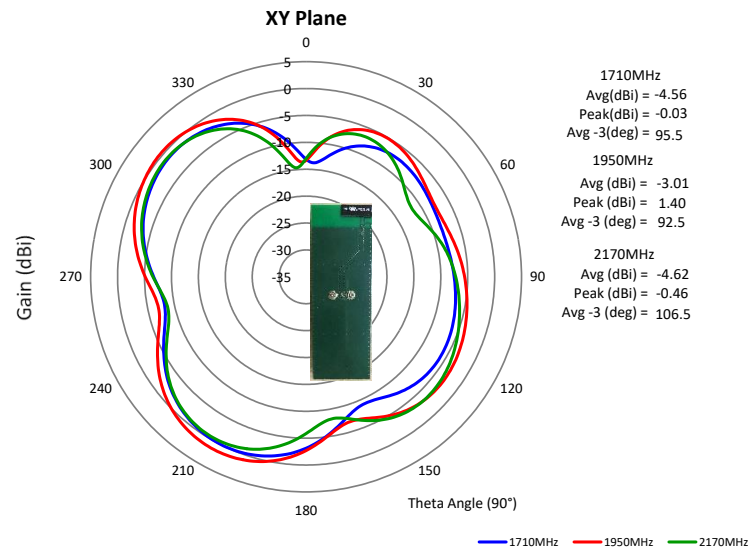
Description: 791-2170MHz SMT Antenna

Series: Domino

PART NUMBER: W3326

CHARTS

Radiation Pattern 2D (1710-2170MHz)



Issue: 2039

In the effort to improve our products, we reserve the right to make changes judged to be necessary.

CONFIDENTIAL AND PROPRIETARY INFORMATION

This document contains confidential and proprietary information of Pulse Electronics, Inc. (Pulse) and is protected by copyright, trade secret and other state and federal laws. Its receipt or possession does not convey any rights to reproduce, disclose its contents, or to manufacture, use or sell anything it may describe. Reproduction, disclosure or use without specific written authorization of Pulse is strictly forbidden.

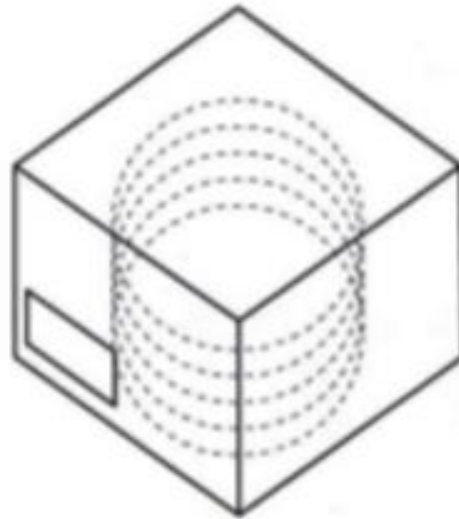
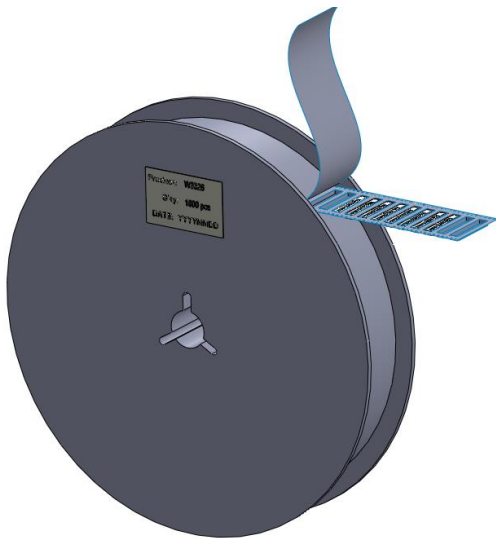
Description: 791-2170MHz SMT Antenna

Series: Domino

PART NUMBER: W3326

PACKAGING

1000pcs Antennas Per 1pcs 13" Tape & Reel
1pc Reel per vacuum bag
3 pcs 13" reel with vacuum bag per carton box
Total 3000pcs Antennas per 1 box
Carton Box Dimension: 350x350x120 mm



According to MSL3 packing requirement, MBB-Moisture Barrel Bag, Desiccant, HIC-Humidity Indicator Card, MSID Label, Caution Label are required.

Mouser Electronics

Authorized Distributor

Click to View Pricing, Inventory, Delivery & Lifecycle Information:

Pulse:

W3326