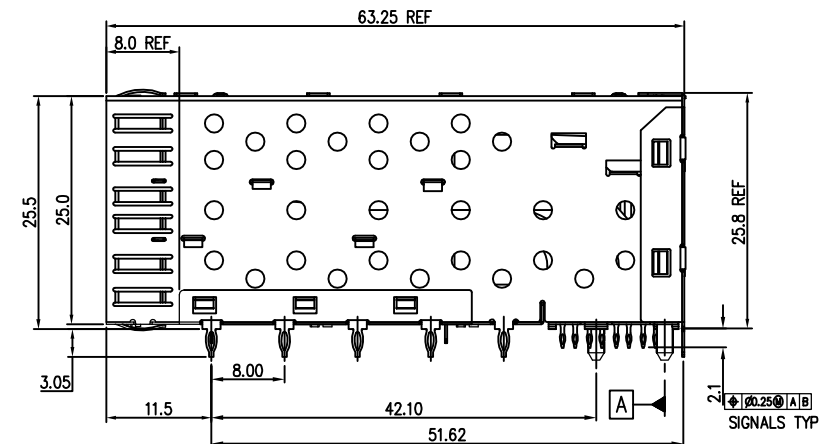
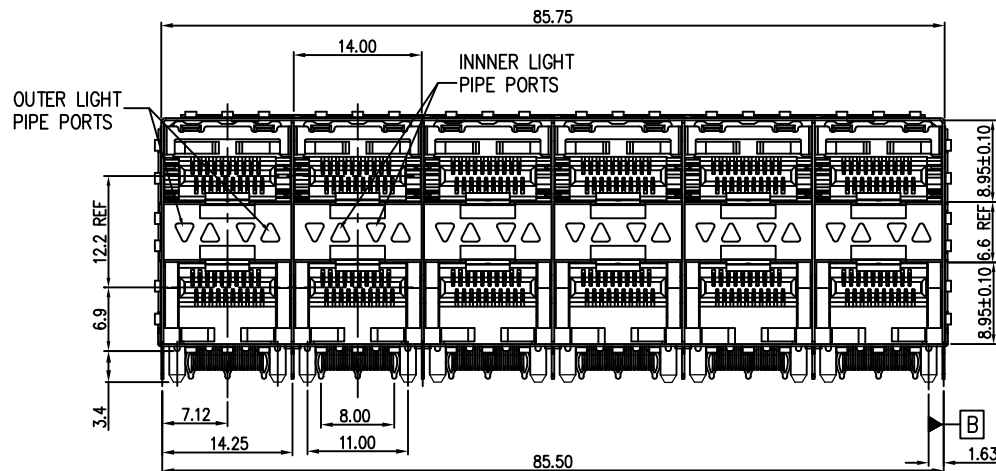


REVISION RECORD		
REV	DESCRIPTION	DRFT
1	ADD NOTE	Jack 9/03/10
2	(1) CHANGE TO 3 ROW TABS (2) ADD TRACE KEEP OUT AREA&DIMENSION	Jack 9/29/10
3	MODIFY PLATING SPECIFICATION	Jack 1/27/11
4	ADD DETAIL VIEW	Jack 1/30/11
5	CHANGE PLASTIC MATERIAL	Roy 1/14/14



NOTES:

1. MATERIAL:

CONNECTOR

HOUSING: GLASS FILLED LIQUID CRYSTAL POLYMER(LCP) UL94V-0. BLACK.

TERMINALS: PHOS-BRONZE $t=0.2\text{mm}$.

OVERMOLDED TERMINAL HOUSING: GLASS FILLED LIQUID CRYSTAL POLYMER(LCP) UL94V-0. BLACK.

CAGE ASSEMBLY: COPPER-NICKEL-ZINC ALLOY $t=0.25\text{mm}$.

2. FINISH:

TERMINAL:

1) 50u" MIN NICKEL PLATING OVER ALL.

2) 30u" MIN GOLD PLATING ON MATING AREA.

3. PRESS FIT HOLES:

CONTACT:

1)HOLE DIAMETER AFTER PLATING: 0.41–0.51mm.

2) DRILLED HOLE: 0.535–0.585mm

CAGE:

1) HOLE DIAMETER AFTER PLATING: 1.00–1.10mm.

2) DRILLED HOLE: 1.125–1.175mm.

4. RATING:

1)VOLTAGE: 120V r.m.s



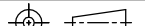
2) CURRENT RATING: 0.5Amp. MAXIMUM PER

INDIVIDUAL CONTACT.

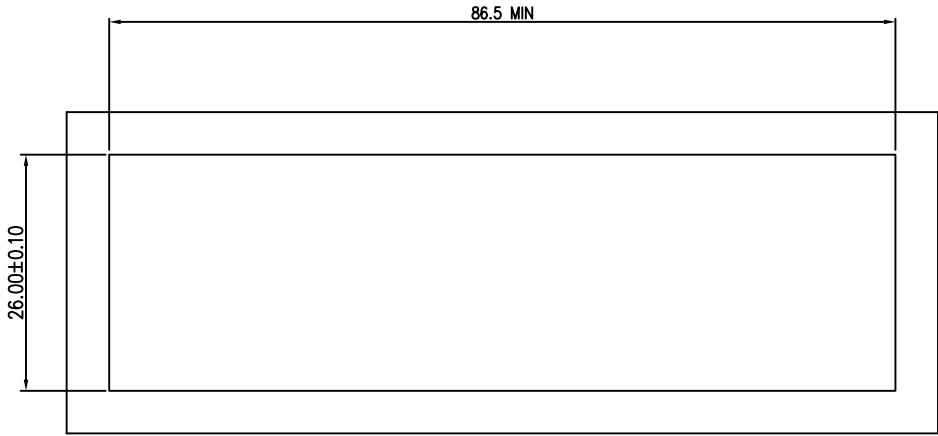
3) OPERATING TEMPERATURE: -55°C TO 85°C

4) INSULATION RESISTANCE: 1000 mega-ohms Min.

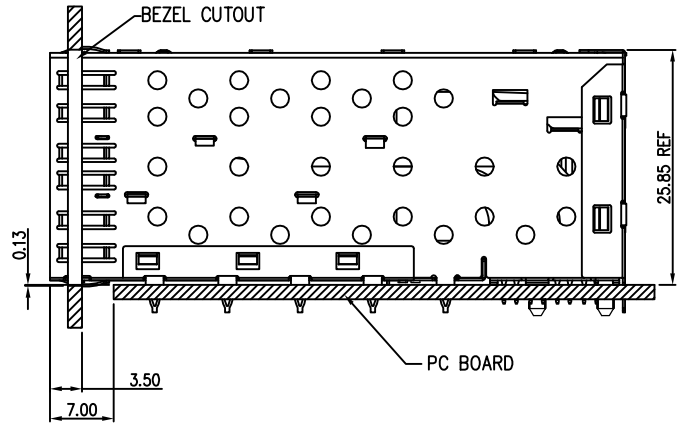
PART NUMBER	DESCRIPTION	REV	GOLD PLATING
SFP005-03-L	WITH INNER/OUTER LIGHT PIPES, PULSE LAYOUT	F	30u"


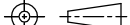
DETAILED LISTS	 MM (INCH)		DFTO Roy		DATE 01/14/2014				RoHS Compliant	
	TOLERANCES EXCEPT AS NOTED		CHKD		DATE		TITLE SFP 2BY 6 CAGE+CONNECTOR_P			
	MM .00 ± 0.20 ± .00 ± 0.15 ± .000 ± 0.075 ±		APPVL		DATE					
			MATERIAL :							
	ANGLES ± 0.5°		QT'Y :		DRAWING NO. CSFP005-03-L		SIZE A3		REV 5	
	 THIRD ANGLE PROJECTION		FINISH :		/PART NO. SFP005-03-L					
			SCALE : 1:1		DO NOT SCALE DRAWING		SHEET 1		OF 4	

REVISION RECORD		
REV	DESCRIPTION	DRFT
1	ADD NOTE	Jack 9/03/10'
2	(1) CHANGE TO 3 ROW TABS (2) ADD TRACE KEEP OUT AREA&DIMENSION	Jack 9/29/10'
3	MODIFY PLATING SPECIFICATION	Jack 1/27/11'
4	ADD DETAIL VIEW	Jack 1/30/12'
5	CHANGE PLASTIC MATERIAL	Roy 1/14/14'

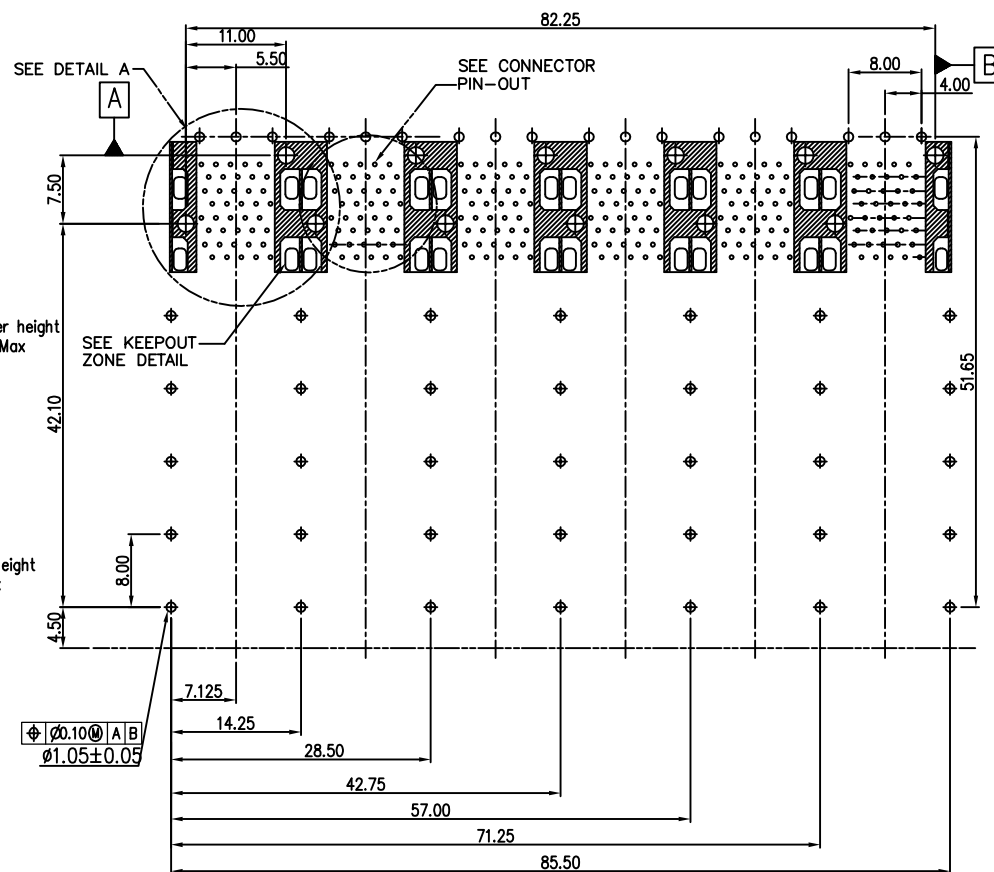
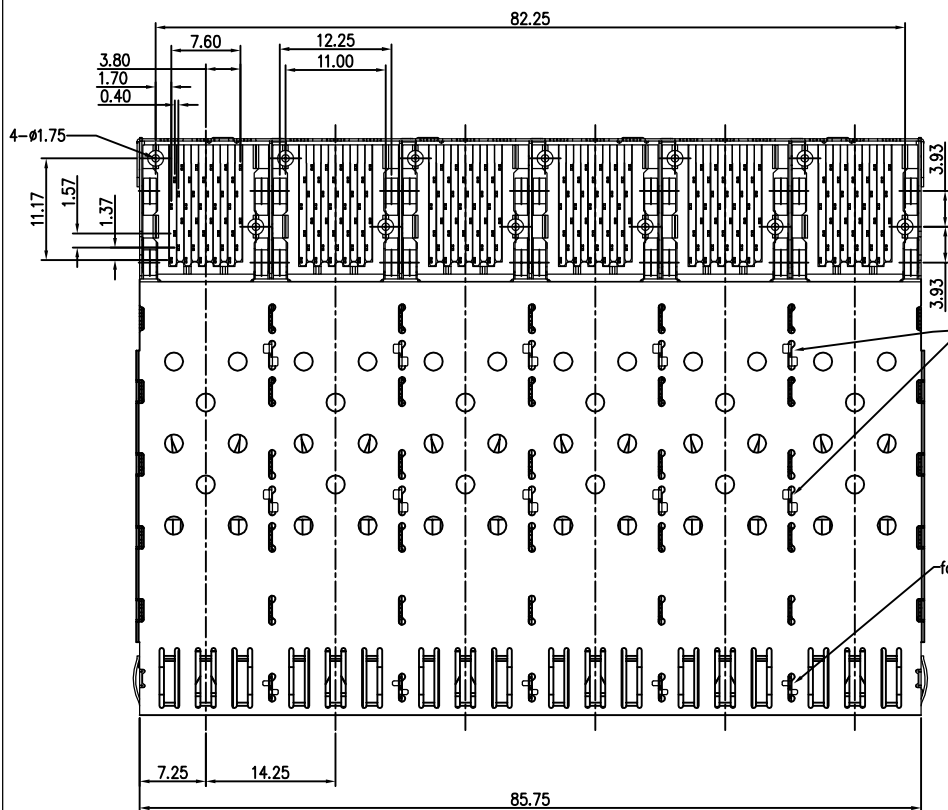




BEZEL CUT-OUT CENTER SPACING DETAIL
BEZEL THICKNESS: 0.8-2.6



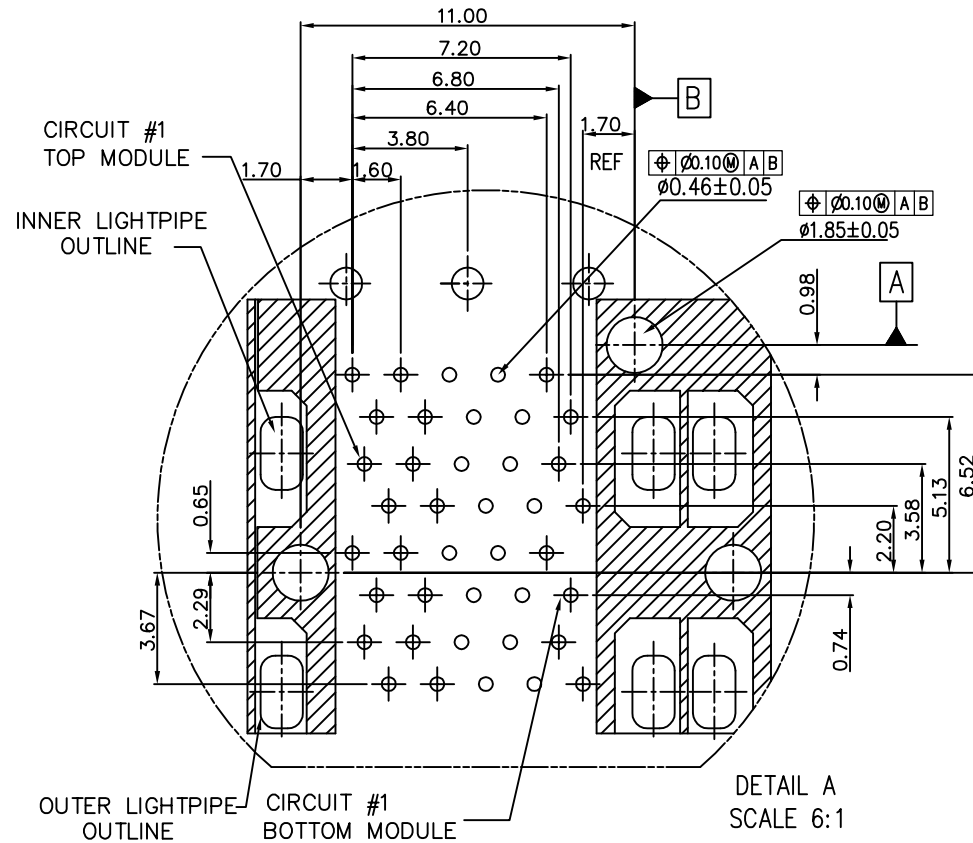
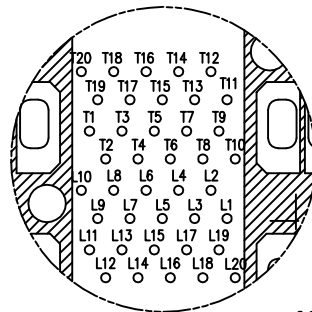
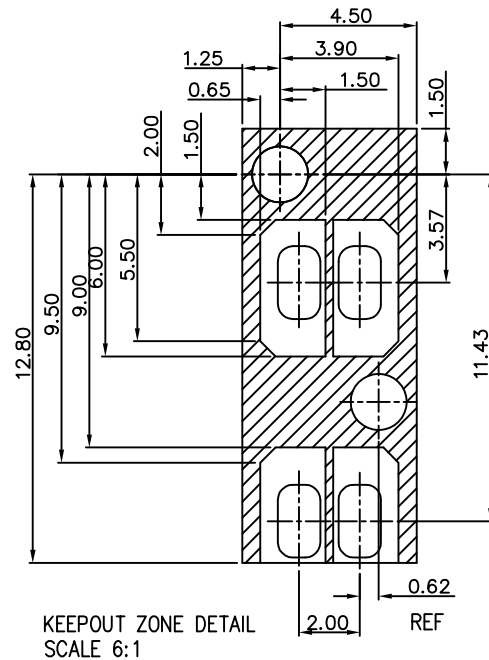
DETACHED LISTS	<div><div>MM</div><div>(INCH)</div></div>		DFTO Roy	DATE 01/14/2014			RoHS Compliant	
	TOLERANCES EXCEPT AS NOTED		CHKD	DATE	TITLE SFP 2BY 6 CAGE+CONNECTOR_P			
	MM	±	APPVL	DATE				
	.0 ± 0.20	±	MATERIAL :					
	.00 ± 0.15	±						
	.000 ± 0.075	±	QT'Y :		/PART NO. SFP005-03-L			
	ANGLES ± 0.5°		FINISH :					
		SCALE : 1:1		DO NOT SCALE DRAWING		SHEET 2 OF 4		
THIRD ANGLE PROJECTION								


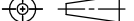
REVISION RECORD		
REV	DESCRIPTION	DRFT
1	ADD NOTE	Jack 9/03/10'
2	(1) CHANGE TO 3 ROW TABS (2) ADD TRACE KEEP OUT AREA&DIMENSION	Jack 9/29/10'
3	MODIFY PLATING SPECIFICATION	Jack 1/27/11'
4	ADD DETAIL VIEW	Jack 1/30/12'
5	CHANGE PLASTIC MATERIAL	Roy 1/14/14'



DETACHED LISTS	<div>MM (INCH)</div>		DFTO Roy	DATE 01/14/2014	 <div>Pulse Electronics</div>	RoHS Compliant	
	TOLERANCES EXCEPT AS NOTED		CHKD	DATE			
	MM		APPVL	DATE			
	.0 ± 0.20	±	MATERIAL :				
	.00 ± 0.15	±					
	.000 ± 0.075		±	TITLE			
	ANGLES ± 0.5°		QTY :	SFP 2BY 6 CAGE+CONNECTOR_F			
			FINISH :	DRAWING NO. CSFP005-03-L		SIZE A3	REV 5
	THIRD ANGLE PROJECTION		SCALE : 1:1	/PART NO. SFP005-03-L			
				DO NOT SCALE DRAWING		SHEET 3	OF 4

REVISION RECORD		
REV	DESCRIPTION	DRFT
1	ADD NOTE	Jack 9/03/10*
2	(1) CHANGE TO 3 ROW TABS (2) ADD TRACE KEEP OUT AREA&DIMENSION	Jack 9/29/10*
3	MODIFY PLATING SPECIFICATION	Jack 1/27/11*
4	ADD DETAIL VIEW	Jack 1/30/12*
5	CHANGE PLASTIC MATERIAL	Roy 1/14/14*



DETACHED LISTS	<div>MM (INCH)</div>		DFTO Roy	DATE 01/14/2014	<div>RoHS Compliant</div>	
	TOLERANCES EXCEPT AS NOTED		CHKD	DATE	TITLE	
	MM		APPVL	DATE		
	.0 ± 0.20 .00 ± 0.15 .000 ± 0.075		MATERIAL :		SFP 2BY 6 CAGE+CONNECTOR_P	
	ANGLES ± 0.5°		QT'Y :		DRAWING NO. CSFP005-03-L	
	<div></div> THIRD ANGLE PROJECTION		FINISH :		/PART NO. SFP005-03-L	
			SCALE : 1:1		DO NOT SCALE DRAWING	
				SHEET 4	OF 4	

Mouser Electronics

Authorized Distributor

Click to View Pricing, Inventory, Delivery & Lifecycle Information:

Pulse:

SFP005-03-L