

Series: Low Profile Transit

Description: 617-3800MHz, Direct mount,  
Monopole

PART NUMBER: LPT600/3800DMN (Black)  
LPT600/3800DMNW (White)



### Features:

- 4G / 5G LTE
- 617-960/1710-2170/  
2300-2700/3400-3800MHz
- Includes New Band 71 (617- 698  
MHz) and CBRS Bands 42 and  
48 (3.4-3.7 GHz)
- Omni radiation pattern
- Average peak gain  
3.9/5.3/5.4/4.7dBi
- Power rating 60W
- Size Dia. 40.9mm (1.61")
- Height 79.2mm (3.12")
- N-Female

### Applications:

- 4G / 5G (LTE)
- Utility boxes
- Smart metering
- IoT Devices

Issue: 1925P

In the effort to improve our products, we reserve the right to make changes judged to be necessary.

CONFIDENTIAL AND PROPRIETARY INFORMATION

This document contains confidential and proprietary information of Pulse Electronics, Inc. (Pulse) and is protected by copyright, trade secret and other state and federal laws. Its receipt or possession does not convey any rights to reproduce, disclose its contents, or to manufacture, use or sell anything it may describe. Reproduction, disclosure or use without specific written authorization of Pulse is strictly forbidden.

For more information:

Pulse Worldwide Headquarters  
15255 Innovation Drive #100  
San Diego, CA 92128  
USA  
Tel: 1-858-674-8100

Pulse/Larsen Antennas  
18110 SE 34<sup>th</sup> St Bldg 2 Suite 250  
Vancouver, WA 98683  
USA  
Tel: 1-360-944-7551

Europe Headquarters  
Pulse GmbH & Co, KG  
Zeppelinstrasse 15  
Herrenberg, Germany  
Tel: 49 7032 7806 0

Pulse (Suzhou) Wireless Products Co, Inc.  
99 Huo Ju Road(#29 Bldg, 4<sup>th</sup> Phase  
Suzhou New District  
Jiangsu Province, Suzhou 215009 PR China  
Tel: 86 512 6807 9998

Preliminary



Series: Low Profile Transit

**Description: 617-3800MHz, Direct mount,  
Monopole****PART NUMBER: LPT600/3800DMN (Black)  
LPT600/3800DMNW (White)****ELECTRICAL SPECIFICATIONS**

Antenna type	Monopole, Measured on Ø1016mm (40") ground plane
Frequency	617-960/1710-2170/2300-2700/3400-3800 MHz
Nominal Impedance	50 $\Omega$
VSWR (617-960/1710-3800)	3:1/2.5:1
Average peak gain (617-960/1710-2170/2300-2700/3400-3800)	3.9/5.3/5.4/4.7 dBi
Average efficiency (617-960/1710-2170/2300-2700/3400-3800)	83/82/88/72 %
Radiation Pattern	Omni
HPBW Vertical Plane (617-960/1710-2170/2300-2700/3400-3800)	44/27/25/38 °
Polarization	Vertical
Power withstanding	60 W

**MECHANICAL SPECIFICATIONS**

Diameter / height	40.9 / 79.2mm (1.61" / 3.12")
Weight	130 g (.29lbs)
Antenna Color / Material	Black or White / PC/ABS C2950
Connector	N-Female
Mounting	15.9mm (.625") hole required

**ENVIRONMENTAL SPECIFICATIONS**

Operating Temperature	-40° to +85° C
Ingress Protection	IP67
RoHS Compliant	Yes

**OTHER SPECIFICATIONS**

Issue: 1925P

In the effort to improve our products, we reserve the right to make changes judged to be necessary.

CONFIDENTIAL AND PROPRIETARY INFORMATION

This document contains confidential and proprietary information of Pulse Electronics, Inc. (Pulse) and is protected by copyright, trade secret and other state and federal laws. Its receipt or possession does not convey any rights to reproduce, disclose its contents, or to manufacture, use or sell anything it may describe. Reproduction, disclosure or use without specific written authorization of Pulse is strictly forbidden.

Preliminary

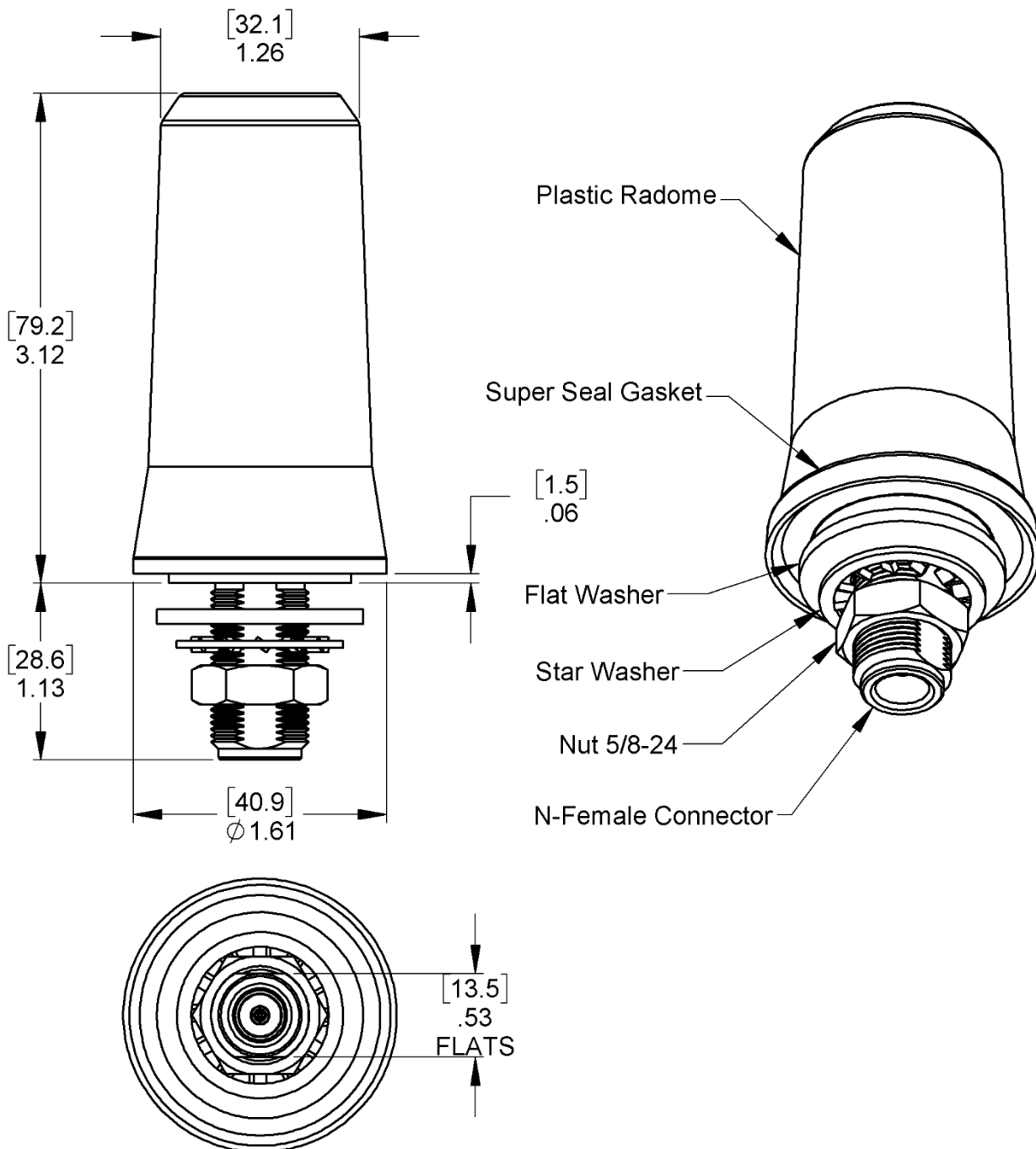


**Description: 617-3800MHz, Direct mount, Monopole**

**Series: Low Profile Transit**

**PART NUMBER: LPT600/3800DMN (Black)**  
**LPT600/3800DMNW (White)**

**MECHANICAL DRAWING**



All dimensions are in mm / inches

Issue: 1925P

In the effort to improve our products, we reserve the right to make changes judged to be necessary.

CONFIDENTIAL AND PROPRIETARY INFORMATION

This document contains confidential and proprietary information of Pulse Electronics, Inc. (Pulse) and is protected by copyright, trade secret and other state and federal laws. Its receipt or possession does not convey any rights to reproduce, disclose its contents, or to manufacture, use or sell anything it may describe. Reproduction, disclosure or use without specific written authorization of Pulse is strictly forbidden.

Preliminary

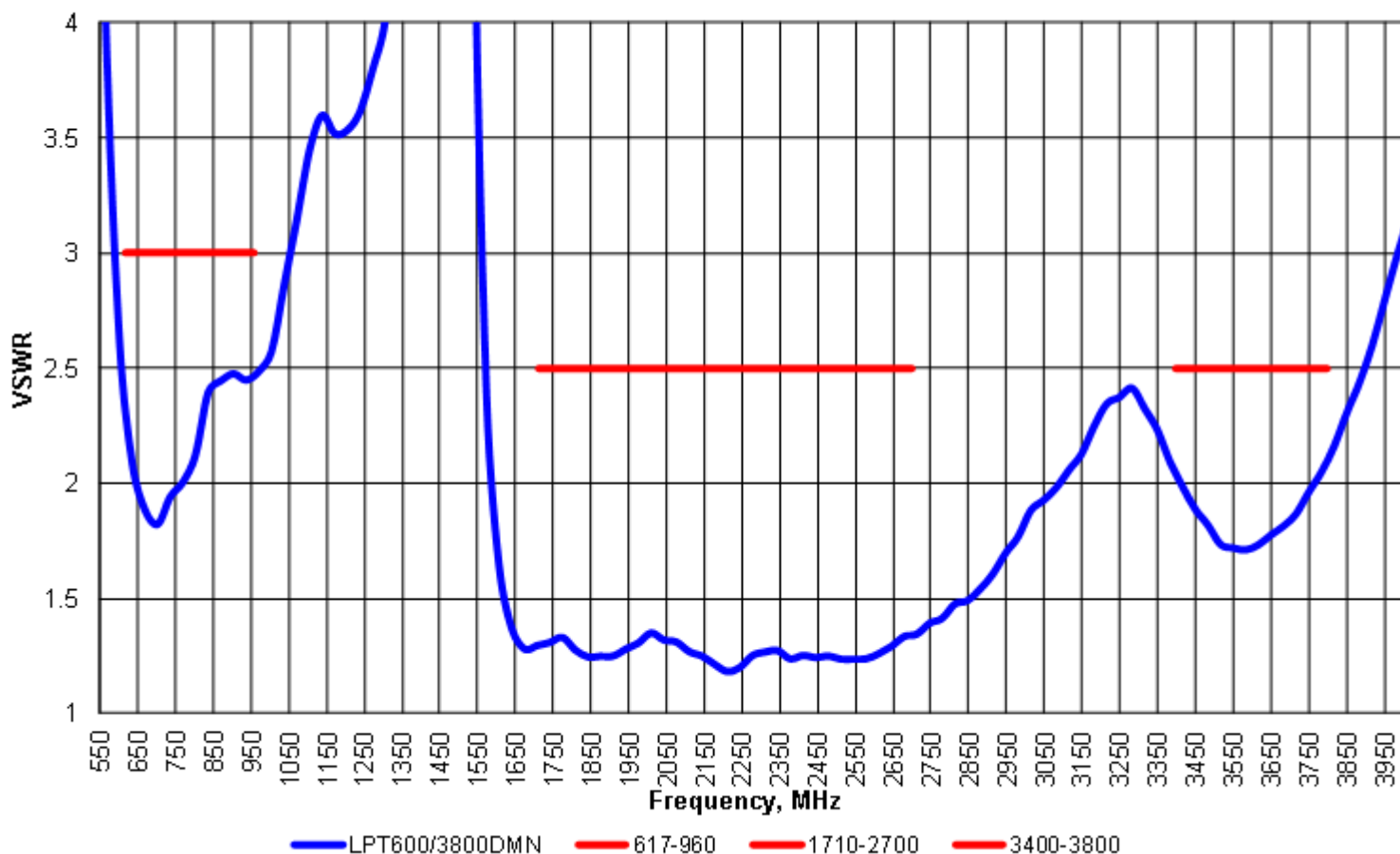
Series: Low Profile Transit

Description: 617-3800MHz, Direct mount, Monopole

PART NUMBER: LPT600/3800DMN (Black)  
LPT600/3800DMNW (White)

## CHARTS

VSWR vs Frequency  
LPT600/3800DMN Measured on Ø40" GP  
Measured at Pulse, USA - June 03, 2019



Issue: 1925P

In the effort to improve our products, we reserve the right to make changes judged to be necessary.

CONFIDENTIAL AND PROPRIETARY INFORMATION

This document contains confidential and proprietary information of Pulse Electronics, Inc. (Pulse) and is protected by copyright, trade secret and other state and federal laws. Its receipt or possession does not convey any rights to reproduce, disclose its contents, or to manufacture, use or sell anything it may describe. Reproduction, disclosure or use without specific written authorization of Pulse is strictly forbidden.

Preliminary



Series: Low Profile Transit

Description: 617-3800MHz, Direct mount, Monopole

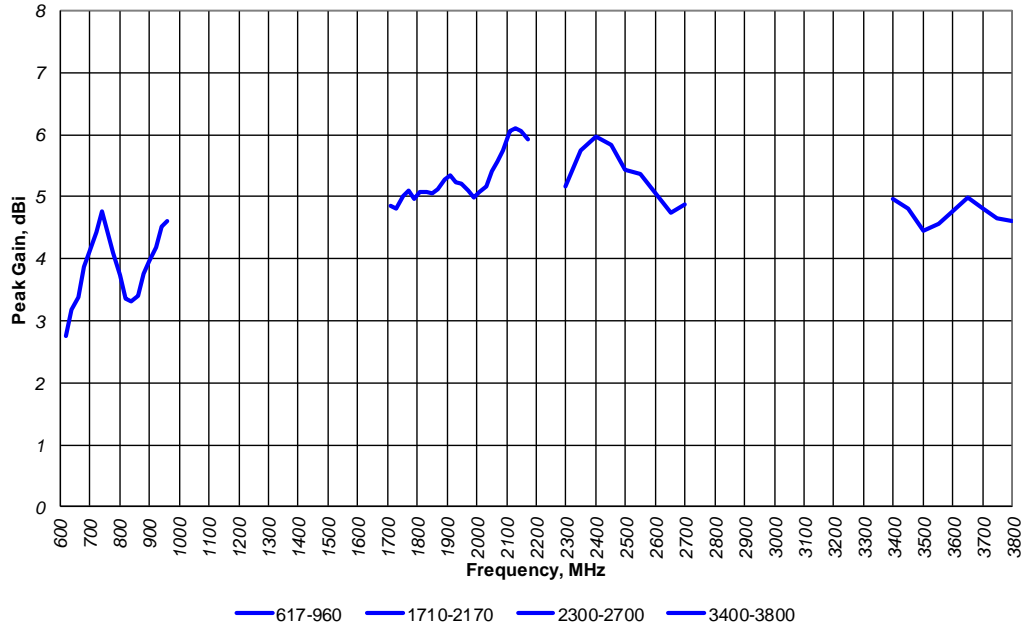
PART NUMBER: LPT600/3800DMN (Black)

LPT600/3800DMNW (White)

## CHARTS

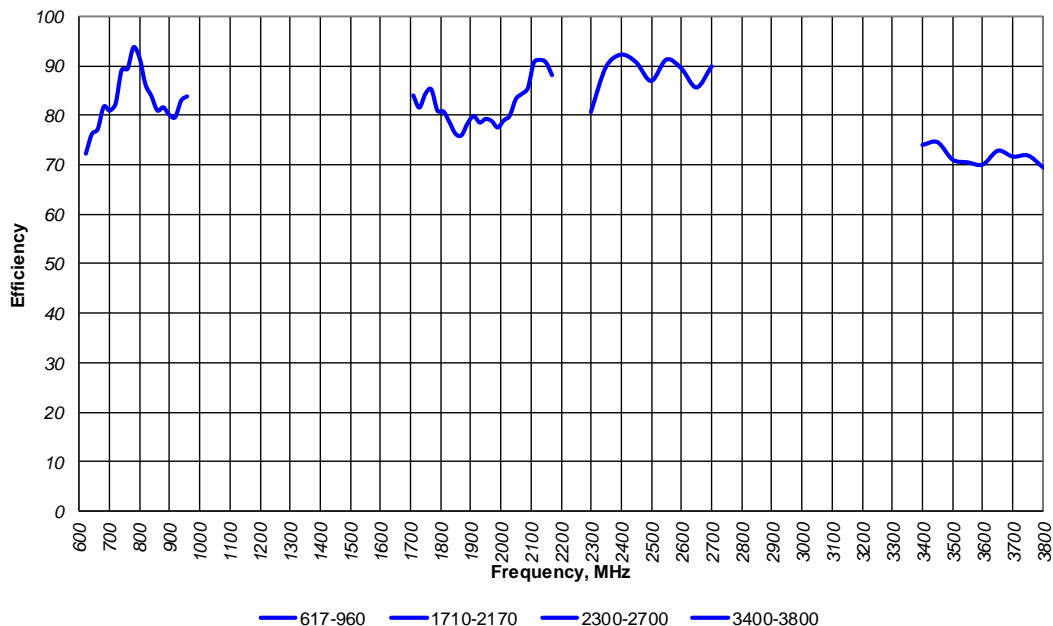
**Peak Gain vs Frequency**  
LPT600/3800DMN Measured on Ø40" GP  
Measured at Pulse, USA - Dec 06, 2018

Measured on Ø40"  
Ground Plane  
No cable



**Efficiency vs Frequency**  
LPT600/3800DMN Measured on Ø40" GP  
Measured at Pulse, USA - Dec 06, 2018

Measured on Ø40"  
Ground Plane  
No cable



Issue: 1925P

In the effort to improve our products, we reserve the right to make changes judged to be necessary.

CONFIDENTIAL AND PROPRIETARY INFORMATION

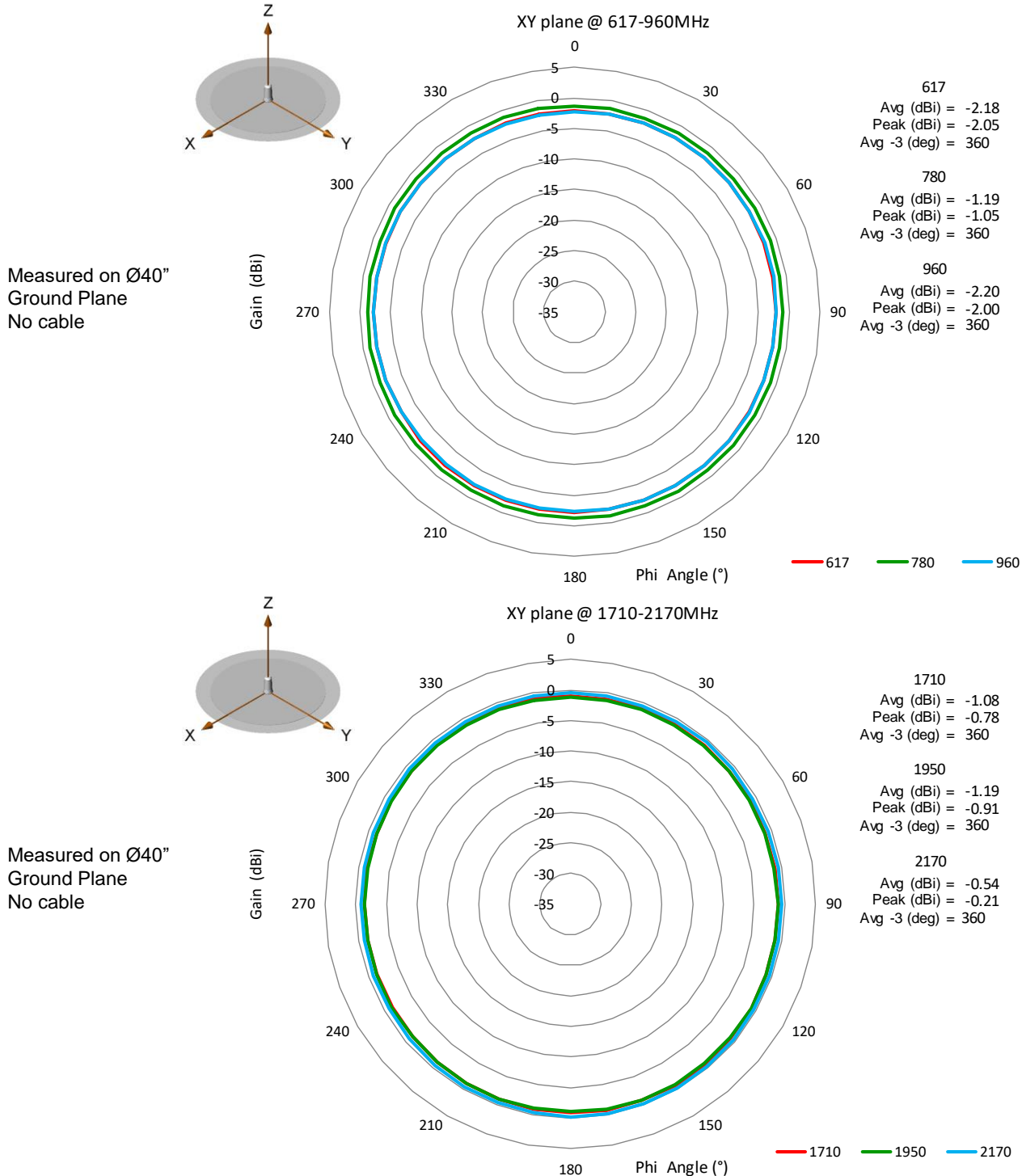
This document contains confidential and proprietary information of Pulse Electronics, Inc. (Pulse) and is protected by copyright, trade secret and other state and federal laws. Its receipt or possession does not convey any rights to reproduce, disclose its contents, or to manufacture, use or sell anything it may describe. Reproduction, disclosure or use without specific written authorization of Pulse is strictly forbidden.

**Description: 617-3800MHz, Direct mount, Monopole**

**Series: Low Profile Transit**

**PART NUMBER: LPT600/3800DMN (Black)**  
**LPT600/3800DMNW (White)**

**CHARTS**



Issue: 1925P

In the effort to improve our products, we reserve the right to make changes judged to be necessary.

CONFIDENTIAL AND PROPRIETARY INFORMATION

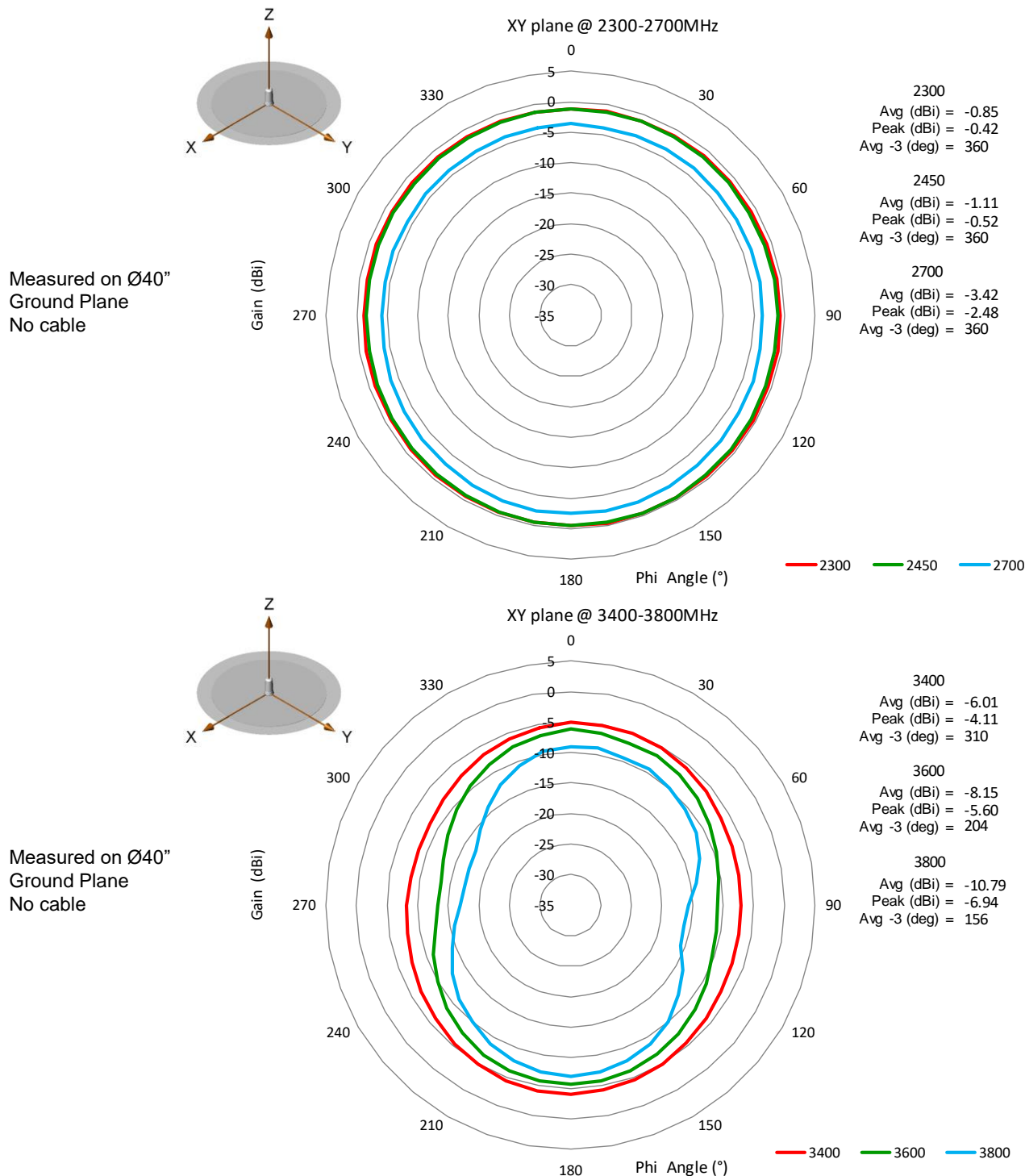
This document contains confidential and proprietary information of Pulse Electronics, Inc. (Pulse) and is protected by copyright, trade secret and other state and federal laws. Its receipt or possession does not convey any rights to reproduce, disclose its contents, or to manufacture, use or sell anything it may describe. Reproduction, disclosure or use without specific written authorization of Pulse is strictly forbidden.

**Description: 617-3800MHz, Direct mount, Monopole**

**Series: Low Profile Transit**

**PART NUMBER: LPT600/3800DMN (Black)**  
**LPT600/3800DMNW (White)**

## CHARTS



Issue: 1925P

In the effort to improve our products, we reserve the right to make changes judged to be necessary.

CONFIDENTIAL AND PROPRIETARY INFORMATION

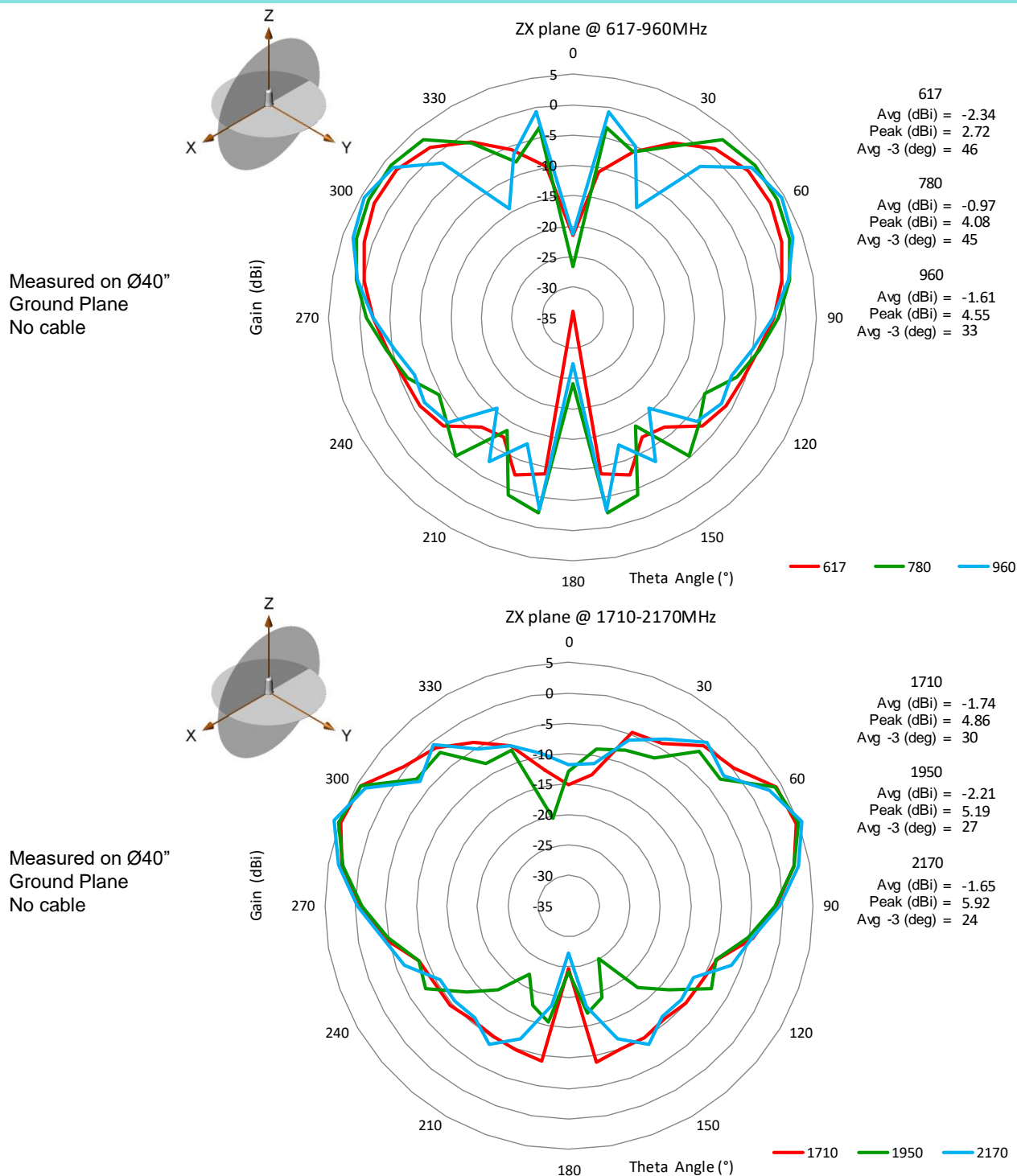
This document contains confidential and proprietary information of Pulse Electronics, Inc. (Pulse) and is protected by copyright, trade secret and other state and federal laws. Its receipt or possession does not convey any rights to reproduce, disclose its contents, or to manufacture, use or sell anything it may describe. Reproduction, disclosure or use without specific written authorization of Pulse is strictly forbidden.

Series: Low Profile Transit

Description: 617-3800MHz, Direct mount, Monopole

PART NUMBER: LPT600/3800DMN (Black)  
LPT600/3800DMNW (White)

## CHARTS



Issue: 1925P

In the effort to improve our products, we reserve the right to make changes judged to be necessary.

CONFIDENTIAL AND PROPRIETARY INFORMATION

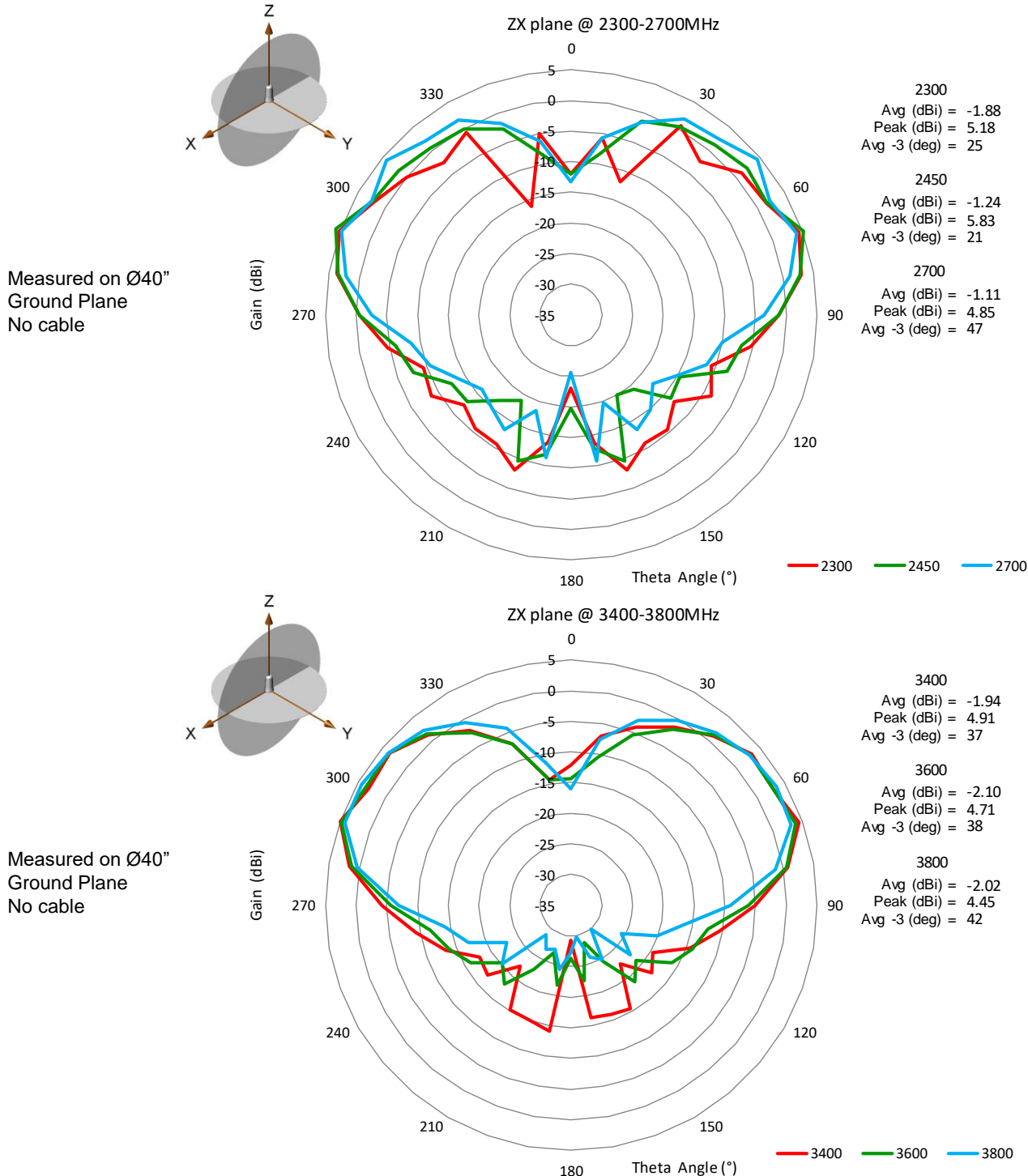
This document contains confidential and proprietary information of Pulse Electronics, Inc. (Pulse) and is protected by copyright, trade secret and other state and federal laws. Its receipt or possession does not convey any rights to reproduce, disclose its contents, or to manufacture, use or sell anything it may describe. Reproduction, disclosure or use without specific written authorization of Pulse is strictly forbidden.

**Description: 617-3800MHz, Direct mount, Monopole**

**Series: Low Profile Transit**

**PART NUMBER: LPT600/3800DMN (Black)**  
**LPT600/3800DMNW (White)**

## CHARTS



Issue: 1925P

In the effort to improve our products, we reserve the right to make changes judged to be necessary.

CONFIDENTIAL AND PROPRIETARY INFORMATION

This document contains confidential and proprietary information of Pulse Electronics, Inc. (Pulse) and is protected by copyright, trade secret and other state and federal laws. Its receipt or possession does not convey any rights to reproduce, disclose its contents, or to manufacture, use or sell anything it may describe. Reproduction, disclosure or use without specific written authorization of Pulse is strictly forbidden.

Series: Low Profile Transit

Description: 617-3800MHz, Direct mount, Monopole

PART NUMBER: LPT600/3800DMN (Black)  
LPT600/3800DMNW (White)

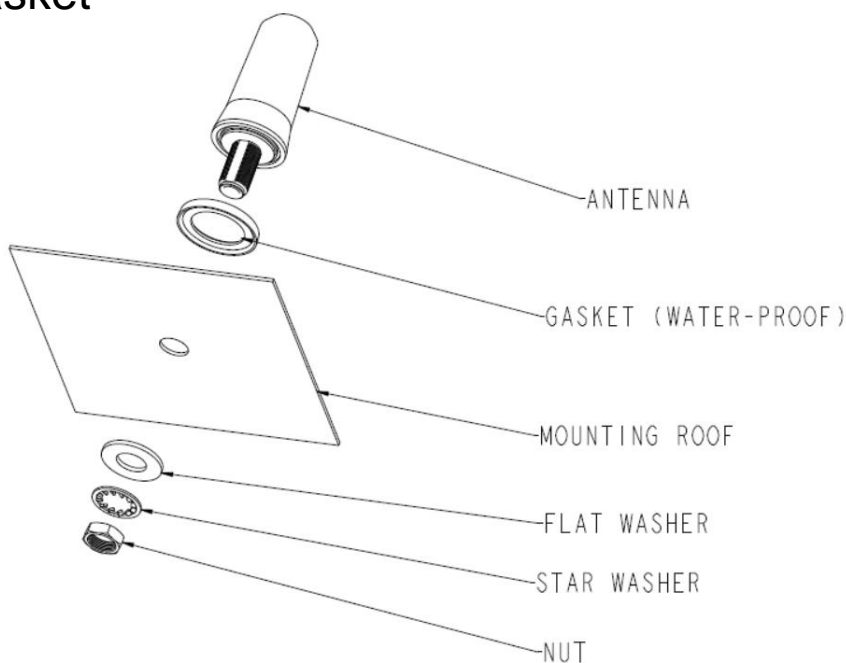
## PACKAGING

- 1 antenna packed in a plastic bag
- 1 label on each product with part number
- 48pcs pre box
- Gasket and O-Ring packed in a plastic bag for alternative seals.

## ASSEMBLY

Direct mounting, 15.9mm (0.625") hole required. The mounting roof thickness should be less than 5mm (0.2"). There are two options to make the antenna water-proof when assembling.

### Option 1: Gasket



Issue: 1925P

In the effort to improve our products, we reserve the right to make changes judged to be necessary.

CONFIDENTIAL AND PROPRIETARY INFORMATION

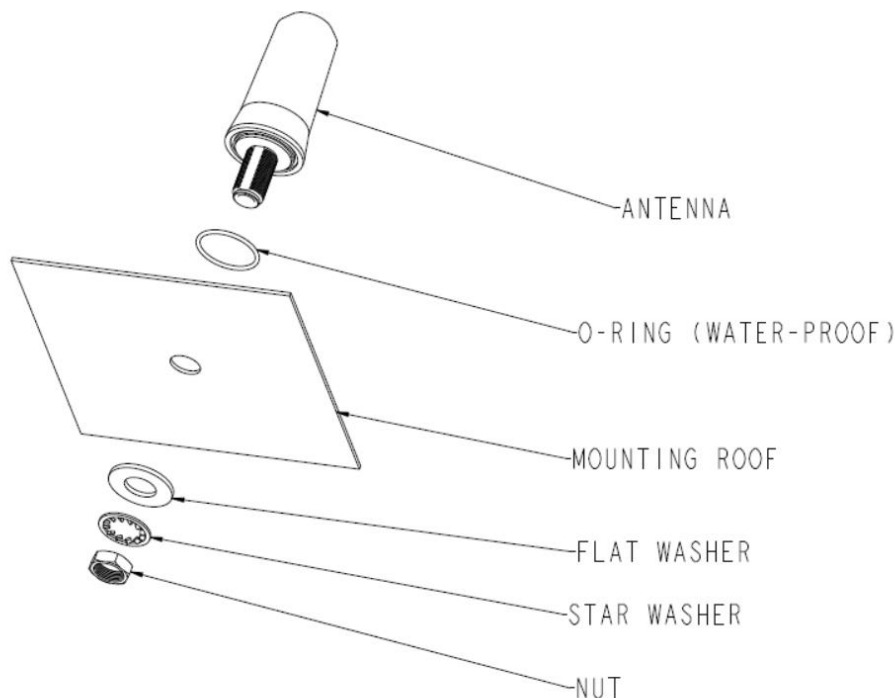
This document contains confidential and proprietary information of Pulse Electronics, Inc. (Pulse) and is protected by copyright, trade secret and other state and federal laws. Its receipt or possession does not convey any rights to reproduce, disclose its contents, or to manufacture, use or sell anything it may describe. Reproduction, disclosure or use without specific written authorization of Pulse is strictly forbidden.

Series: Low Profile Transit

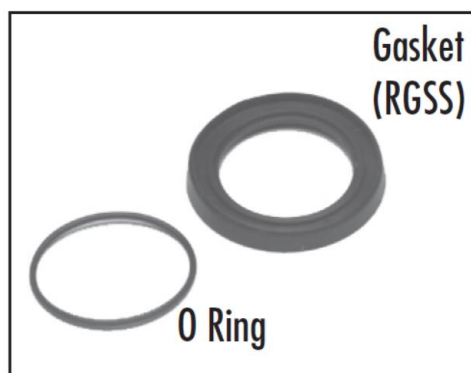
Description: 617-3800MHz, Direct mount, Monopole

PART NUMBER: LPT600/3800DMN (Black)  
LPT600/3800DMNW (White)

## Option 2: O-Ring



Note: Use one or other for mounting the antenna --- they cannot be used together. The RGSS is typically used for permanent mounts.



Issue: 1925P

In the effort to improve our products, we reserve the right to make changes judged to be necessary.

CONFIDENTIAL AND PROPRIETARY INFORMATION

This document contains confidential and proprietary information of Pulse Electronics, Inc. (Pulse) and is protected by copyright, trade secret and other state and federal laws. Its receipt or possession does not convey any rights to reproduce, disclose its contents, or to manufacture, use or sell anything it may describe. Reproduction, disclosure or use without specific written authorization of Pulse is strictly forbidden.

Preliminary

# Mouser Electronics

Authorized Distributor

Click to View Pricing, Inventory, Delivery & Lifecycle Information:

Pulse:

[LPT600/3800DMNW](#)