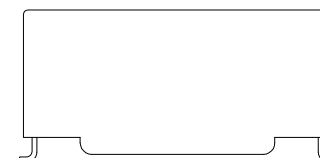
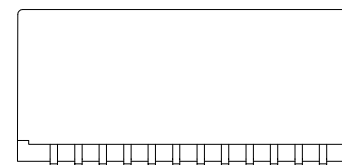
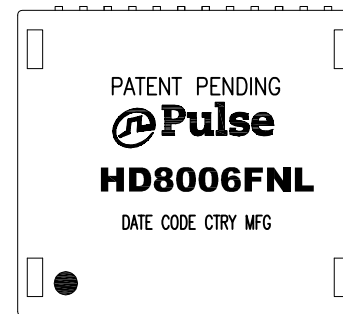




NOTES:

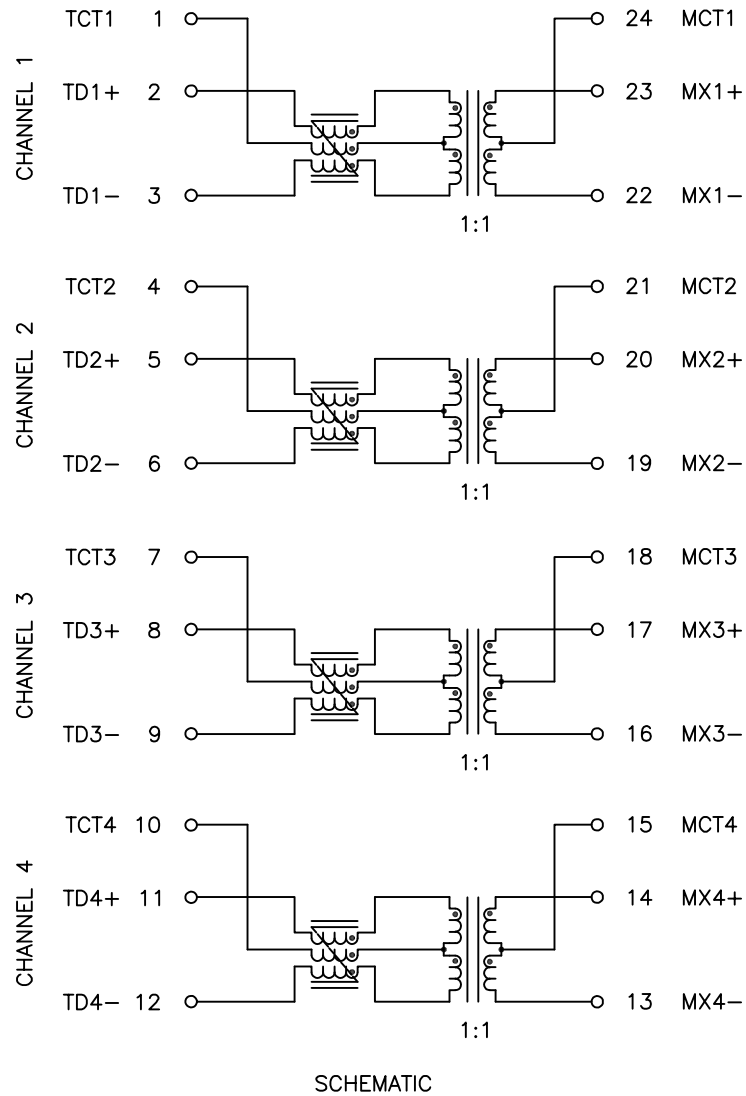
1. ROHS COMPLIANT
2. HEADER: DAP (DIALLYL PHTHALATE) WITH FLAMMABILITY RATING UL 94V-0 OR BETTER.
3. STORAGE TEMPERATURE: -20°C TO +125°C
4. COMPLIANCE TO J-STD:
 - A. J-STD-002: SOLDERABILITY AT 245°C REFLOW PROFILE
 - B. J-STD-020: LEVEL 1, NO MOISTURE SENSITIVE
 - C. J-STD-075: R7, 245°C MAXIMUM THROUGH REFLOW SOLDER
5. TO ORDER TAPE & REEL PACKAGING ADD A "T" SUFFIX TO THE PART NUMBER(i.e HD8006FNL BECOMES HD8006FNLT).



FINAL OUTLINE

© Copyright, 2018. Pulse Electronics Corp. All rights reserved. Pulse confidential & proprietary. (03/05/18)

PRODUCT DESCRIPTION	TLA DRAWING	PS DRAWING	SHEET	PART NO.	DATASHEET REV.
MDL,SIN,HDBT,1:1,SM,TU	HD8006FNL-11	PS-2790.001-C	1 OF 3	HD8006FNL	B



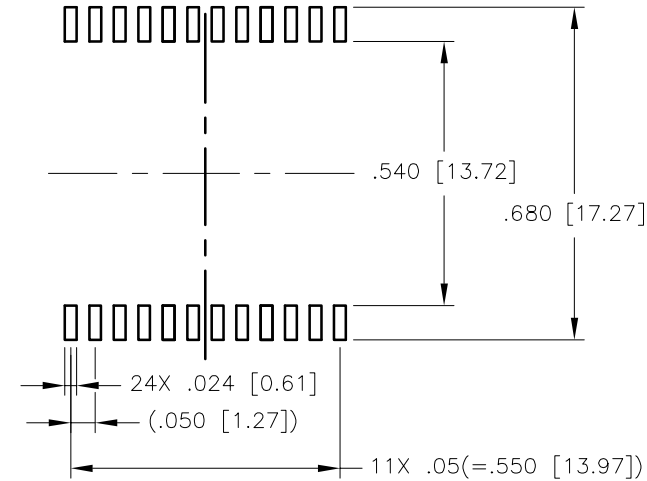
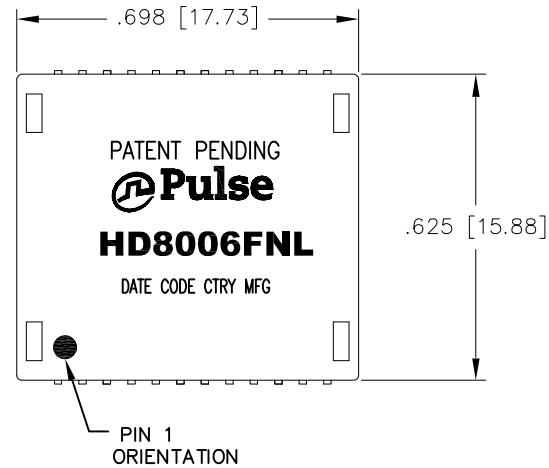
ELECTRICAL CHARACTERISTICS AT +25°C UNLESS OTHER SPECIFIED
MEETS IEEE 802.3 SPECIFICATION

PARAMETER	SPECIFICATIONS									
OPERATING TEMPERATURE	0°C TO +70°C									
TURNS RATIO	1.00 ± 2%									
POLARITY	PER SCHEMATIC									
INSERTION LOSS (SDD21)	100 KHz		1-200 MHz		300 MHz		400 MHz			
	-3.0 dB MAX		-1.0 dB MAX		-1.2 dB MAX		-2.0 dB MAX			
PHY-SIDE RETURN LOSS (SDD11 - Zref = 100 OHMS ± 1%)	1 MHz		10 MHz-100 MHz		200 MHz		300 MHz		400 MHz	
	-20.0 dB MIN		-22.0 dB MIN		-17.0 dB MIN		-13.5 dB MIN		-11.0 dB MIN	
INDUCTANCE (OCL) (MEDIA SIDE, -0°C-+70°C)	120 uH MIN (MEASURED AT 100 KHz, 100 mVRMS AND WITH 22.5 mA DC BIAS)									
CROSSTALK, ADJACENT CHANNELS (SDD21 - ADJ.)	1-100 MHz					100-400 MHz				
	-40 dB MIN					-30 dB MIN				
COMMON MODE REJECTION RATIO (SCC21)	1 MHz-100 MHz				100-300 MHz			300-400 MHz		
	-37 dB MIN				-30 dB MIN			-25 dB MIN		
COMM. TO DIFF. REJECTION RATIO (SDC12)	1 MHz-100 MHz				100-300 MHz			300-400 MHz		
	-40 dB MIN				-30 dB MIN			-25 dB MIN		
DC RESISTANCE, 1/2 WINDING	.65 OHMS MAX									
DC CURRENT/ VOLTAGE RATING	1500 mA MAX @ 57 V (CONTINUOUS)									
INPUT - OUTPUT ISOLATION	1500 VRMS MIN @ 60 SECONDS									

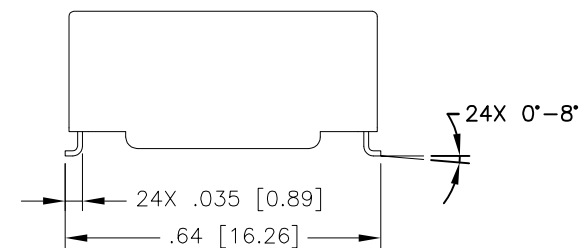
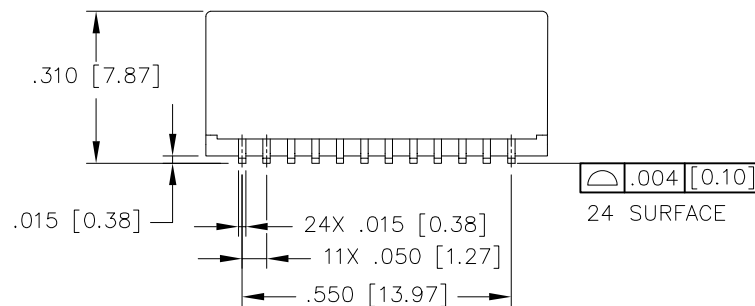
NOTE: f IS FREQUENCY IN MHZ.

© Copyright, 2018. Pulse Electronics Corp. All rights reserved. Pulse confidential & proprietary. (03/05/18)

PRODUCT DESCRIPTION	TLA DRAWING	PS DRAWING	SHEET	PART NO.	DATASHEET REV.
MDL,SIN,HDBT,1:1,SM,TU	HD8006FNL-11	PS-2790.001-C	2 OF 3	HD8006FNL	B



SUGGESTED LAND PATTERN



DIMENSIONS ARE IN INCHES [MILLIMETERS] WITH THE FOLLOWING TOLERANCES: [MILLIMETERS] ARE FOR REFERENCE ONLY.
.XX= ± 0.01 [± 0.25]
.XXX= ± 0.005 [± 0.13]

© Copyright, 2018. Pulse Electronics Corp. All rights reserved. Pulse confidential & proprietary. (03/05/18)

PRODUCT DESCRIPTION	TLA DRAWING	PS DRAWING	SHEET	PART NO.	DATASHEET REV.
MDL,SIN,HDBT,1:1,SM,TU	HD8006FNL-11	PS-2790.001-C	3 OF 3	HD8006FNL	B

Mouser Electronics

Authorized Distributor

Click to View Pricing, Inventory, Delivery & Lifecycle Information:

Pulse:

[HD8006FNL](#)