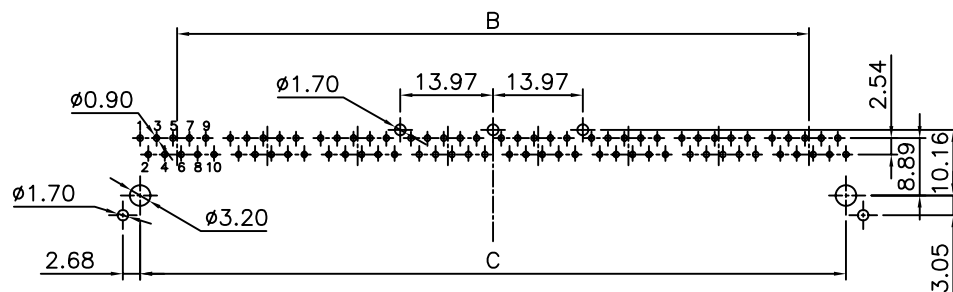
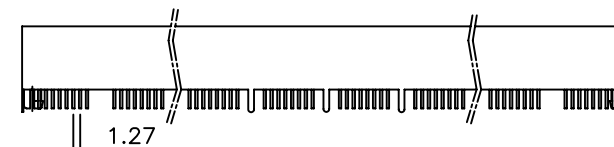
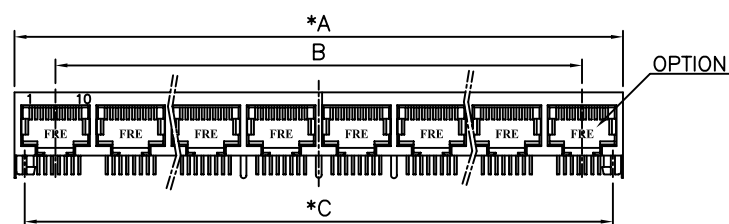
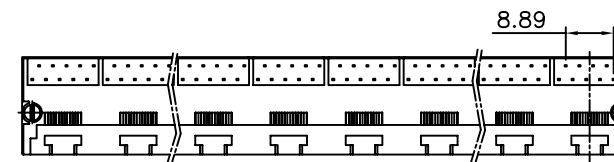
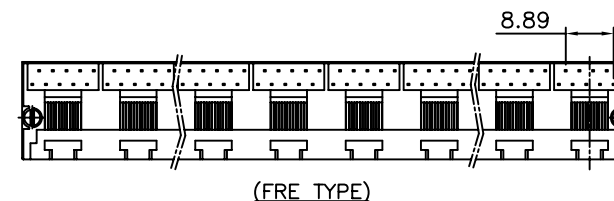


A1RFRD10

REVISION RECORD				
REV	ECO	DESCRIPTION	DRFT	CHKD
△		MODIFY DRAWING	ANKUE 7/08/06	



PC Board Layout Component Side Shown



NOTES:

ELECTRICAL:

1. VOLTAGE RATING : 125 VAC RMS.
2. CURRENT RATING : 1.5 AMP
- △ 3. CONTACT RESISTANCE : 45 MILLIOHMS MAX.
4. INSULATION RESISTANCE: 1000 MEGOHMS MIN @ 500 VDC.
5. DIELECTRIC STRENGTH : 1000 VAC RMS 60Hz, 1MIN.

MECHANICAL:

1. HOUSING MATERIAL : PBT+GF30% UL94V-0. COLOR:BLACK
2. INSERT MATERIAL : PBT+GF30% UL94V-0. COLOR:BLACK
3. CONTACT MATERIAL : PHOSPHOR BRONZE t=0.35mm .
4. PLATING : GOLD PLATING OVER NICKEL.
5. OPERATING LIFE : 750 CYCLES MIN.
6. PCB RETENTION PRE-SOLDER : 1 LB MIN.
7. PCB RETENTION POST-SOLDER: 10 LBS MIN.

ENVIRONMENTAL:

1. STORAGE : -40°C TO +85°C.
2. OPERATION: -40°C TO +85°C.
3. WAVE SOLDERING TEMPERATURE: 230~250° 5~10 SECONDS.
4. RoHS COMPLIANT.

MATES WITH MODULAR PLUG CONFORMING TO

FCC PART 68, SUBPART F.

RoHS PART NUMBER: E560X-XXX0XX-L

- 4- 4 CONTACTS
8- 8 CONTACTS
1-10 CONTACTS
- 1- 3u" 2- 6u" F-Gold Flash
3-15u" 4-30u" 5-50u" 6-Pd 20u"
- 8-FLAT PIN t=0.35mm(FRE TYPE)
R-FLAT PIN t=0.35mm(MAXTOP TYPE)

Type of Shield:

- E-FRONT PEG 3.05
F-FRONT PEG 3.05W/ 3 GROUNDING TABS
G-FRONT PEG 3.05W/ 5 GROUNDING TABS

- △ 0- TIN W/FRE LOGO
△ 2- TIN W/O FRE LOGO
△ 3- NICKEL W/O FRE LOGO
△ 4- NICKEL W/FRE LOGO



PORTS	DIM"A"±0.10 0.20	DIM"B"±0.20	DIM"C"±0.15
6	87.12	69.85	81.28
8	115.06	97.79	109.22
5	73.15	55.88	67.31

DETACHED LISTS	<div>MM (INCH)</div>		DFTO QSJ	DATE 7/1/05"	FULL RISE ELECTRONIC CO., LTD		
	TOLERANCES EXCEPT AS NOTED		CHKD YUKI	DATE 2006/7/11			
	MM .0 ± 0.2 .00 ± 0.15 .000 ± 0.075	± ± ±	MFO	DATE	TITLE 11.5 SIDE ENTRY PCB GANG JACK 10P		
			APPV LUSHENG	DATE 2006/7/11			
	ANGLES ± 0.5		MATERIAL :		DRAWING NO. GE563060-LC /PART NO. SEE NOTE		
	THIRD ANGLE PROJECTION		FINISH :				SIZE A3
		SCALE : 4:5		DO NOT SCALE DRAWING		SHEET 1	OF 1

Mouser Electronics

Authorized Distributor

Click to View Pricing, Inventory, Delivery & Lifecycle Information:

Pulse:

[E5608-4EC062-L](#)