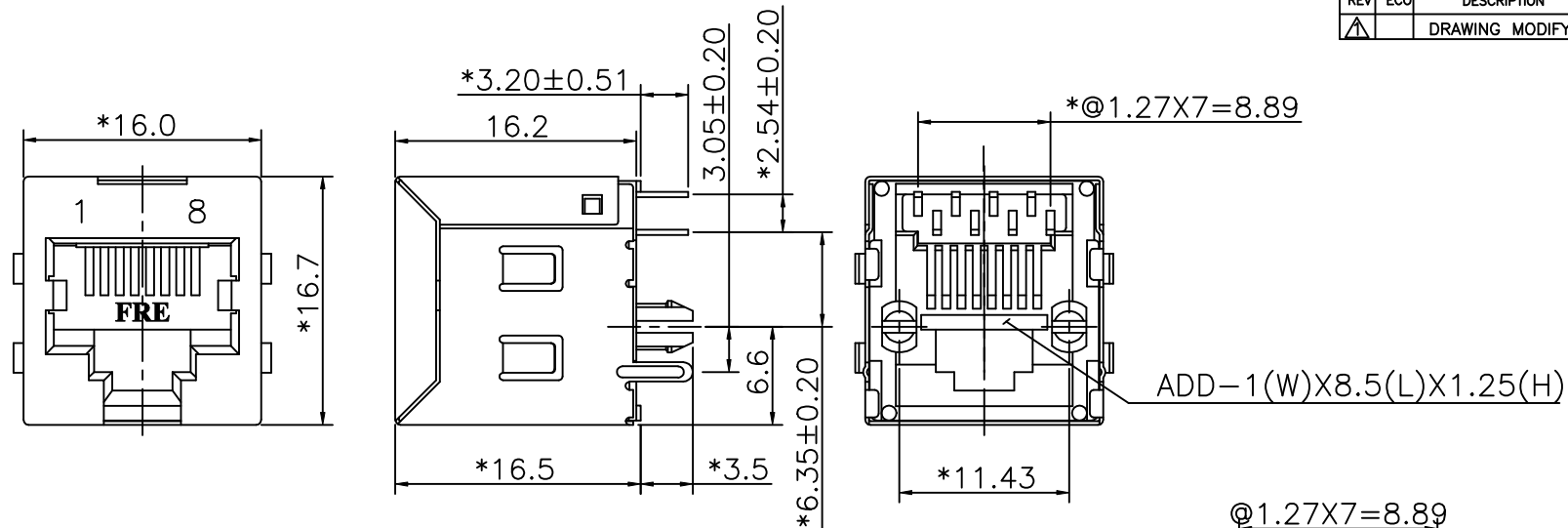


REVISION RECORD				
REV	ECO	DESCRIPTION	DRFT	CHKD
A		DRAWING MODIFY	JAMMIN 12/13/05	



ELECTRICAL:

1. VOLTAGE RATING : 125 VAC RMS.
2. CURRENT RATING : 1.5 AMP.
3. CONTACT RESISTANCE : 30 MILLIOHMS MAX.
4. INSULATION RESISTANCE: 1000 MEGOHMS MIN @ 500 VDC.
5. DIELECTRIC STRENGTH : 1000 VAC RMS 60Hz, 1MIN.

1. HOUSING MATERIAL : PBT UL94V-0.  
 2. CONTACT MATERIAL : PHOSPHOR BRONZE t=0.35mm.  
 3. PLATING : GOLD PLATING OVER NICKEL.  
 4. OPERATING LIFE : 750 CYCLES MIN.  
 5. PCB RETENTION PRE-SOLDER : 1 LB MIN.  
 6. PCB RETENTION POST-SOLDER: 10 LBS MIN.

ENVIRONMENTAL:

1. STORAGE : -40°C TO +85°C.  
 2. OPERATION: 0°C TO 70°C.  
 3. WAVE SOLDER TEMPERATURE: 230~250°C (5~10 SECONDS).  
 MATE WITH MODULAR PLUG CONFORMING TO  
 FCC PART 68, SUBPART F.  
 CUL FILE NO. E163191


ROHS PART NUMBER: E5288-3X0X4X-L

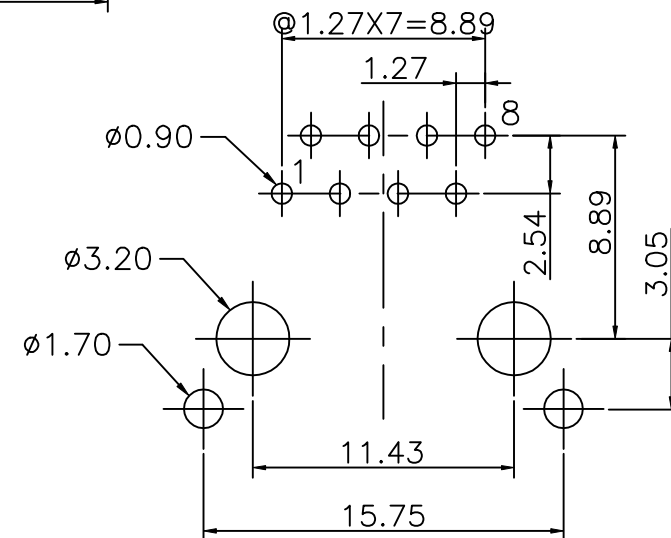
SHIELD PLATING:


- 1- TIN PLATING,W/ SIDE TABS  
2- NICKEL PLATING,W/ SIDE TABS  
S- TIN PLATING,W/O SIDE TABS  
T- NICKEL PLATING,W/O SIDE TABS

**GOLD PLATING:**

- 1- 3u"      2- 6u"  
3-15u"      4-30u"  
5-50u"

- 0-PBT+15%G.F (BK)  
1-PBT+30%G.F (BK)  
L-PBT+30%G.F (YELLOW) 



PC Board Layout Component Side Shown


DETACHED LISTS			DFTO SAMMY		DATE 03/16/05		<h1 style="text-align: center;">FULL RISE ELECTRONIC CO., LTD</h1>			
	TOLERANCES EXCEPT AS NOTED		CHKDKANKE		DATE2005/12/14					
			MFO		DATE					
			APPLVLUSHENG		DATE2005/12/14					
	MM .0 ±0.20 .00 ±0.15 .00 ±0.075		±				<h2 style="text-align: center;">RJ45 TOP ENTRY PCB MODULAR JACK(DIP TYPE</h2>			
	ANGLES ±		QT*Y :							
			FINISH :							
	THIRD ANGLE PROJECTION		SCALE : 3:1		DO NOT SCALE DRAWING		SHEET X		OF Y	
					DRAWING NO. GE523014-LC		SIZE A3		REV 1	
					/PART NO. SEE NOTE					

# Mouser Electronics

Authorized Distributor

Click to View Pricing, Inventory, Delivery & Lifecycle Information:

Pulse:

[E5288-310141-L](#)